

Supplementary Materials: Cytotoxic and Proapoptotic Activity of Sanguinarine, Berberine, and Extracts of *Chelidonium majus* L. and *Berberis thunbergii* DC. toward Hematopoietic Cancer Cell Lines

Anna Och, Daniel Zalewski, Łukasz Komsta, Przemysław Kołodziej, Janusz Kocki and Anna Bogucka-Kocka *

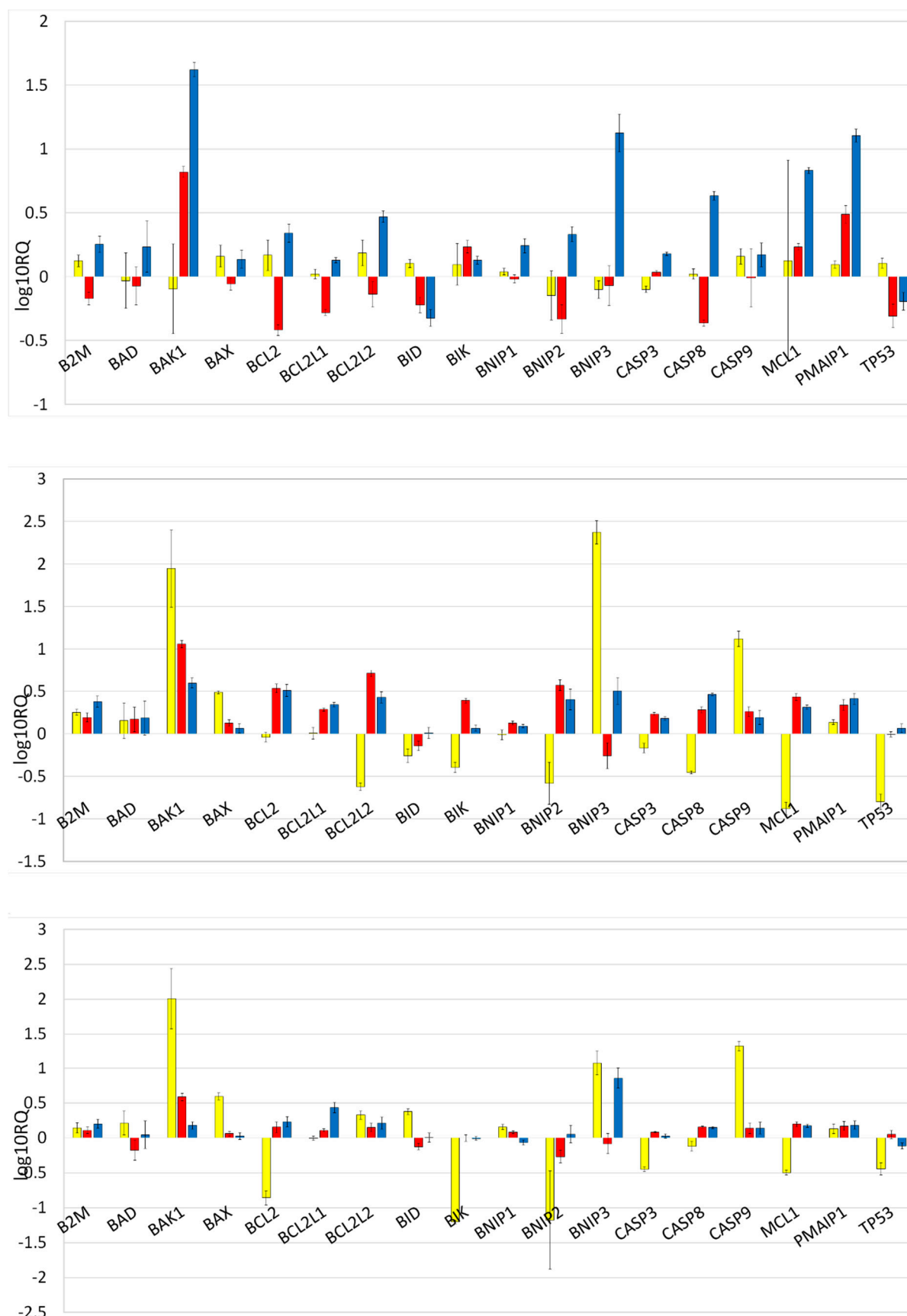


Figure S1. Expression profiles of 18 apoptosis-related genes in U266B1 cell line exposed to IC10 (upper panel), IC50 (middle panel) and IC90 (lower panel) of sanguinarine (blue), berberine (yellow) and *Chelidonium majus* L. extract (red).

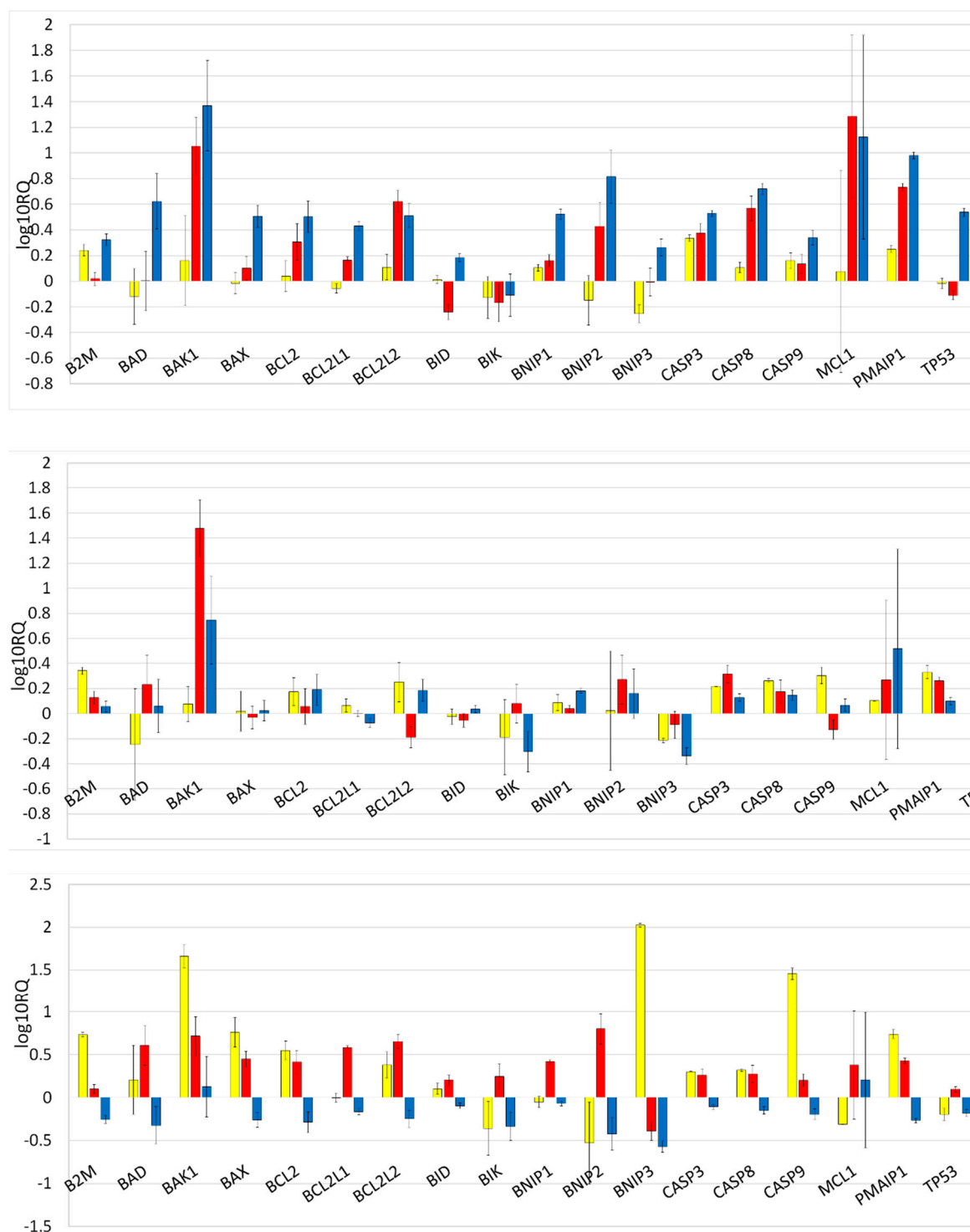


Figure S2. Expression profiles of 18 apoptosis-related genes in CEM/C1 cell line exposed to IC10 (upper panel), IC50 (middle panel) and IC90 (lower panel) of sanguinarine (blue), berberine (yellow) and *Chelidonium majus* L. extract (red).

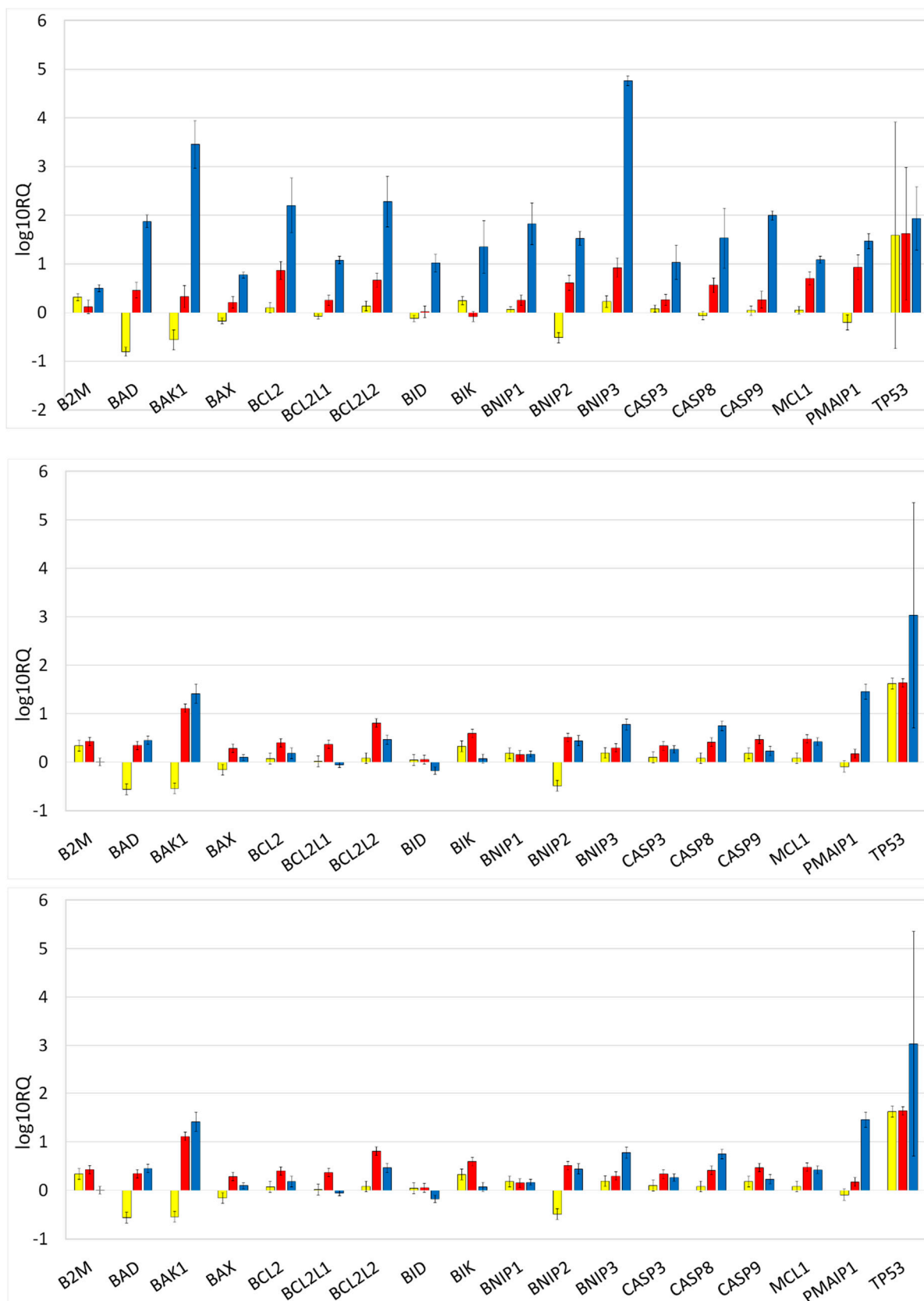


Figure S3. Expression profiles of 18 apoptosis-related genes in CCRF/CEM cell line exposed to IC10 (upper panel), IC50 (middle panel) and IC90 (lower panel) of sanguinarine (blue), berberine (yellow) and *Chelidonium majus* L. extract (red).

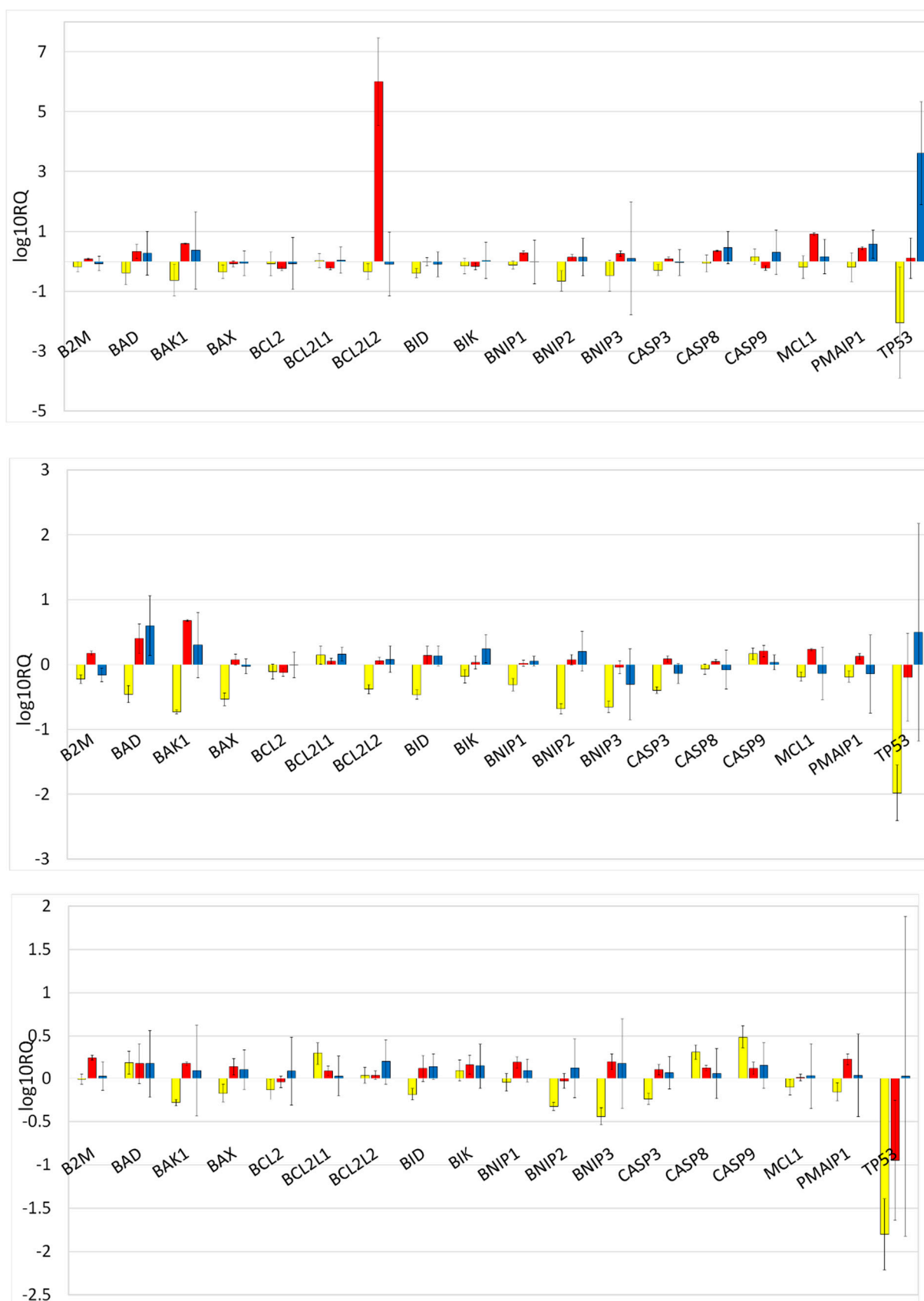


Figure S4. Expression profiles of 18 apoptosis-related genes in HL60 cell line exposed to IC10 (upper panel), IC50 (middle panel) and IC90 (lower panel) of sanguinarine (blue), berberine (yellow) and *Chelidonium majus* L. extract (red).

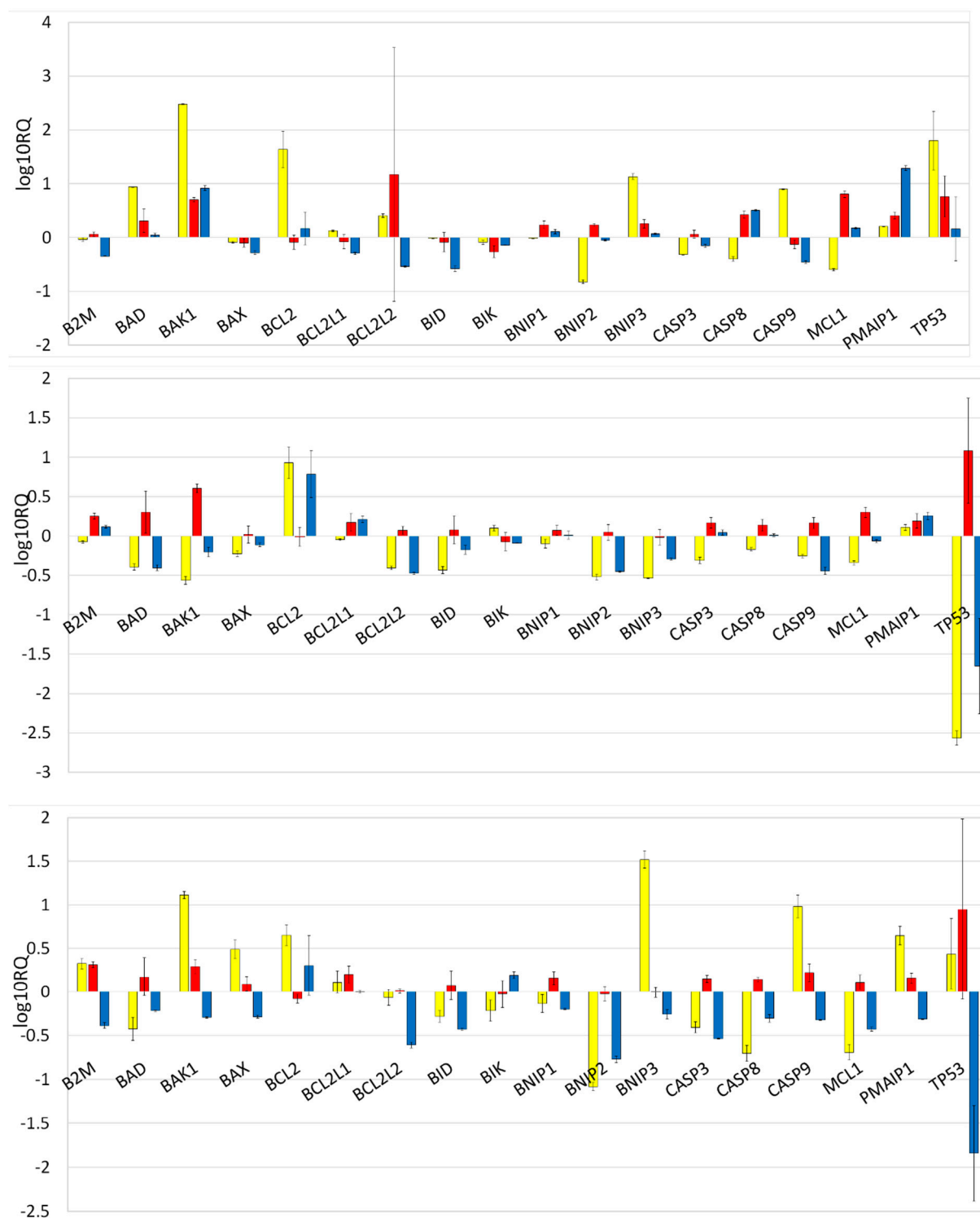


Figure S5. Expression profiles of 18 apoptosis-related genes in HL60/MX1 cell line exposed to IC10 (upper panel), IC50 (middle panel) and IC90 (lower panel) of sanguinarine (blue), berberine (yellow) and *Chelidonium majus* L. extract (red).

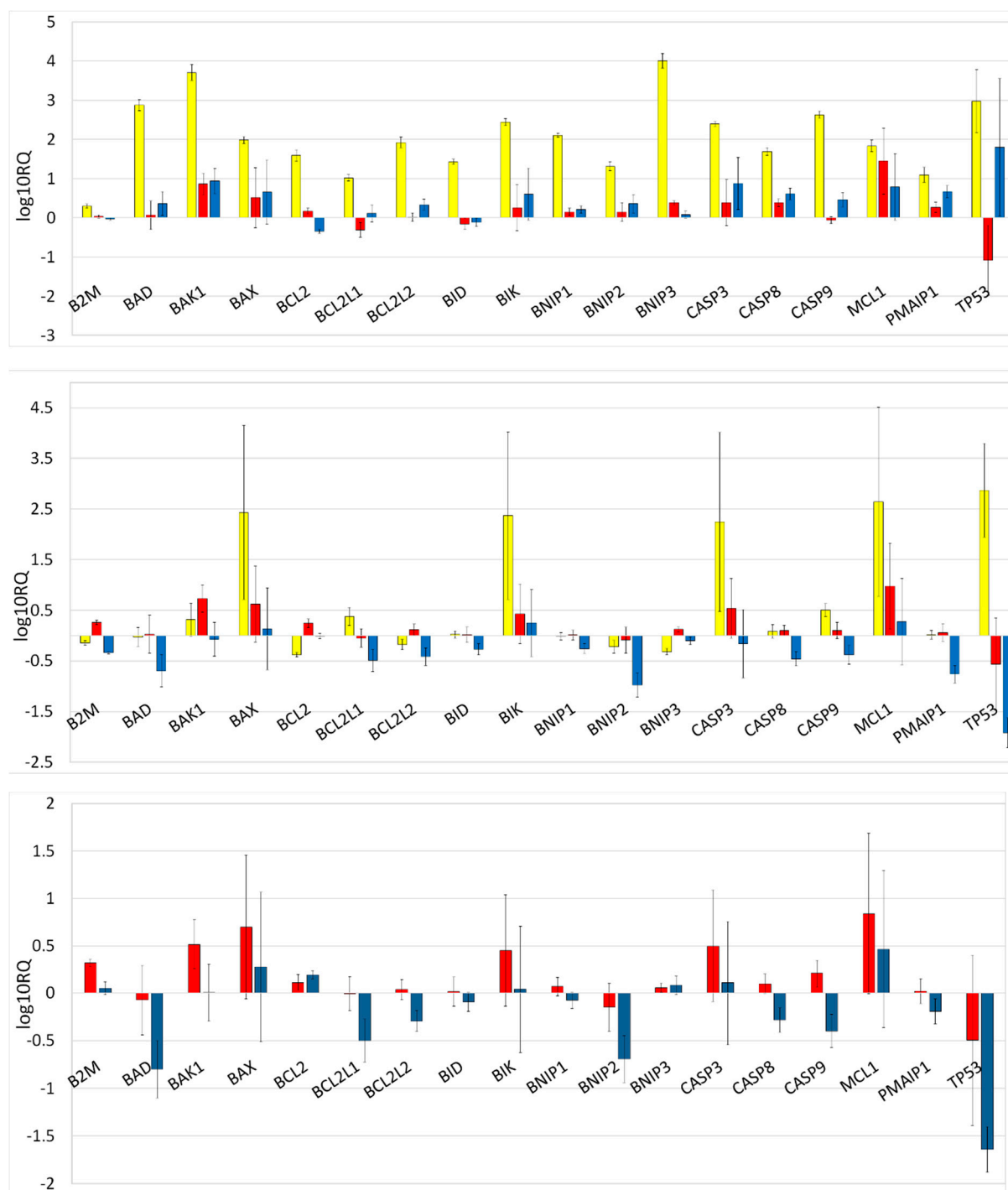


Figure S6. Expression profiles of 18 apoptosis-related genes in HL60/MX2 cell line exposed to IC10 (upper panel), IC50 (middle panel) and IC90 (lower panel) of sanguinarine (blue), berberine (yellow) and *Chelidonium majus* L. extract (red).

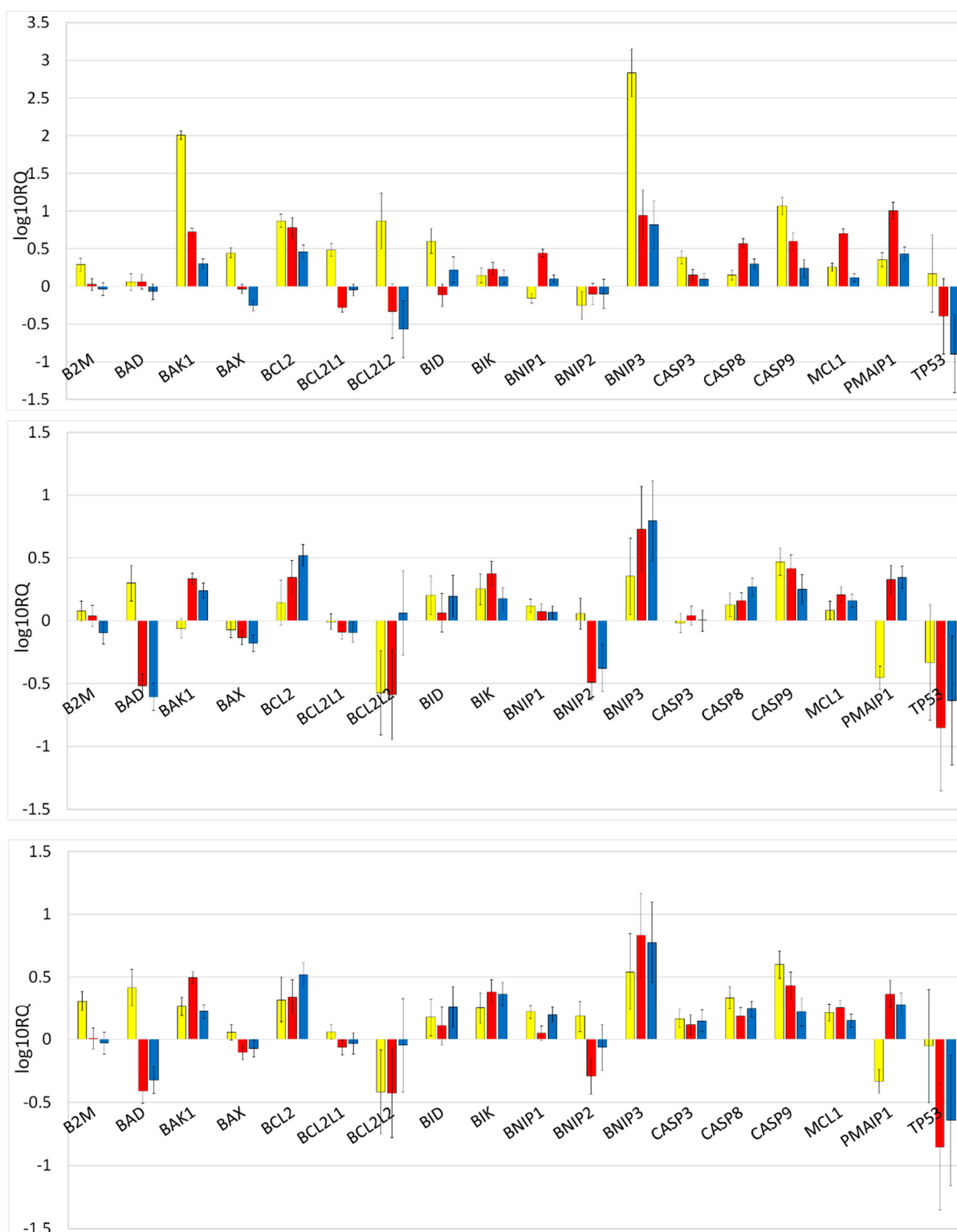


Figure S7. Expression profiles of 18 apoptosis-related genes in J45.01 cell line exposed to IC10 (upper panel), IC50 (middle panel) and IC90 (lower panel) of sanguinarine (blue), berberine (yellow) and *Chelidonium majus* L. extract (red).

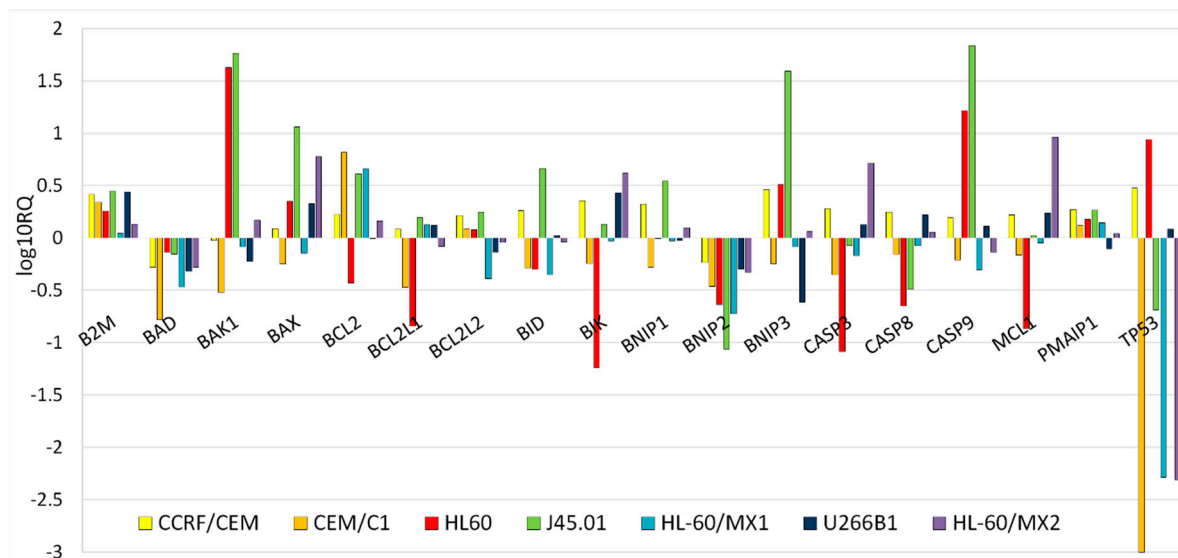


Figure S8. Expression profiles of 18 apoptosis-related genes in seven hematopoietic cell lines exposed to *Berberis thunbergii* DC. extract in concentration of 145.5 $\mu\text{g/mL}$.