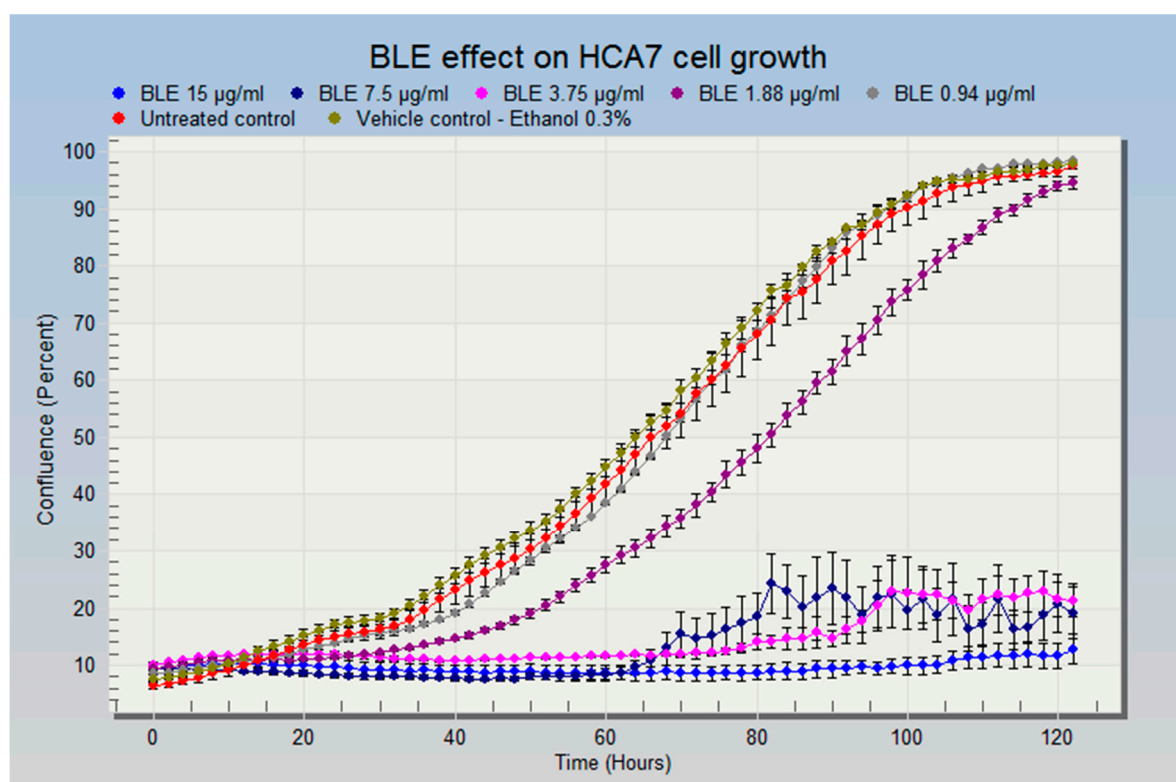


Figure S1. (a) BLE effect on HFF-2 cell growth. (b) TE effect on HFF-2 cell growth. Cells were treated with a range of concentrations and the growth was monitored using IncuCyte camera. Data were analysed and presented using IncuCyte software (Essen Bioscience, UK).

(a)



(b)

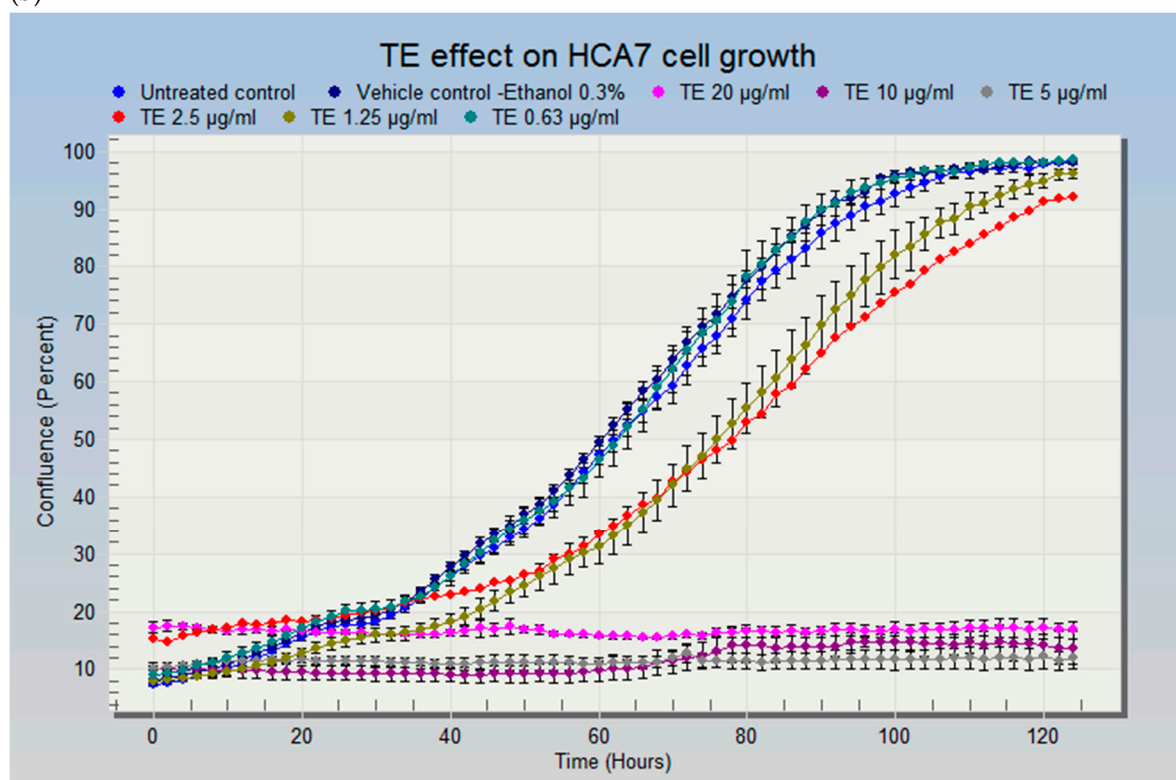


Figure S2. (a) BLE effect on HCA-7 cell growth. (b) TE effect on HCA-7 cell growth. Cells were treated with a range of concentrations and the growth was monitored using IncuCyte camera. Data were analysed and presented using IncuCyte software (Essen Bioscience, UK).