

Figure S1. Overall survival rates for 8 cases of colorectal cancer.

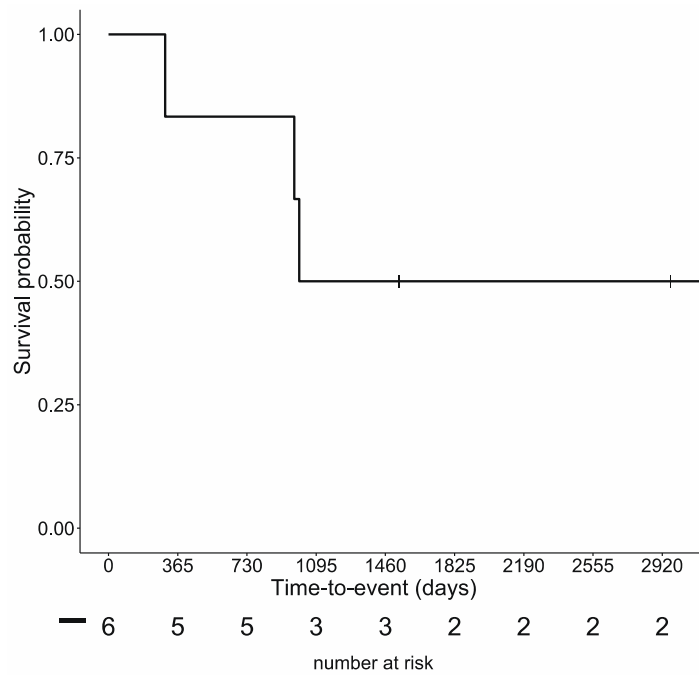
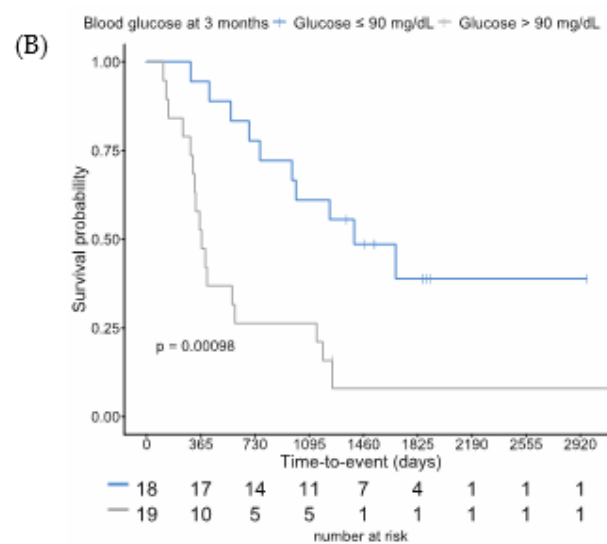
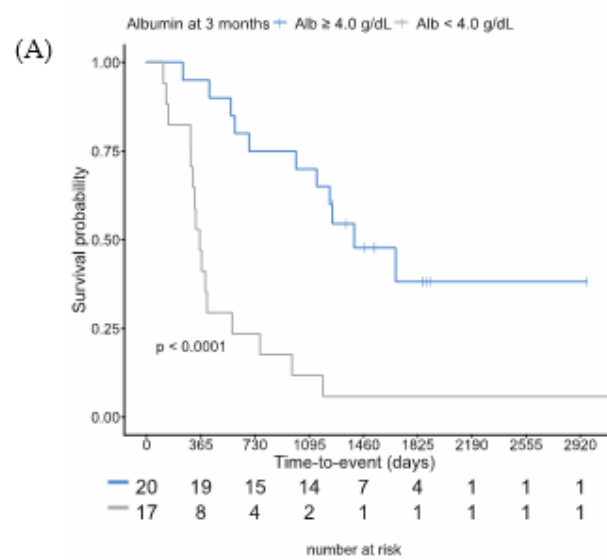


Figure S2. Overall survival rates for 6 cases of non-small cell lung cancer.



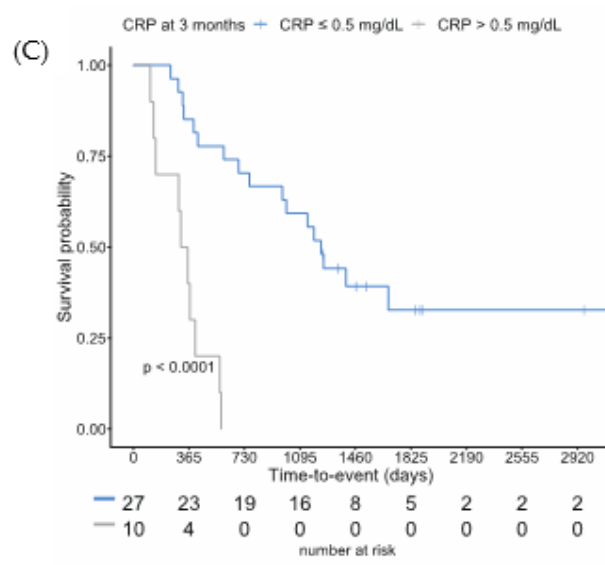


Figure S3. Stratified overall survival rates for 37 cases. (A) Patients with serum values for albumin (Alb) \geq or $<$ 4.0 mg/dL ($p < 0.0001$). (B) glucose (Glu) $>$ or \leq 90 mg/dL ($p < 0.0001$) and (C) C-reactive protein (CRP) $>$ or \leq 0.5 mg/dL ($p < 0.0001$).

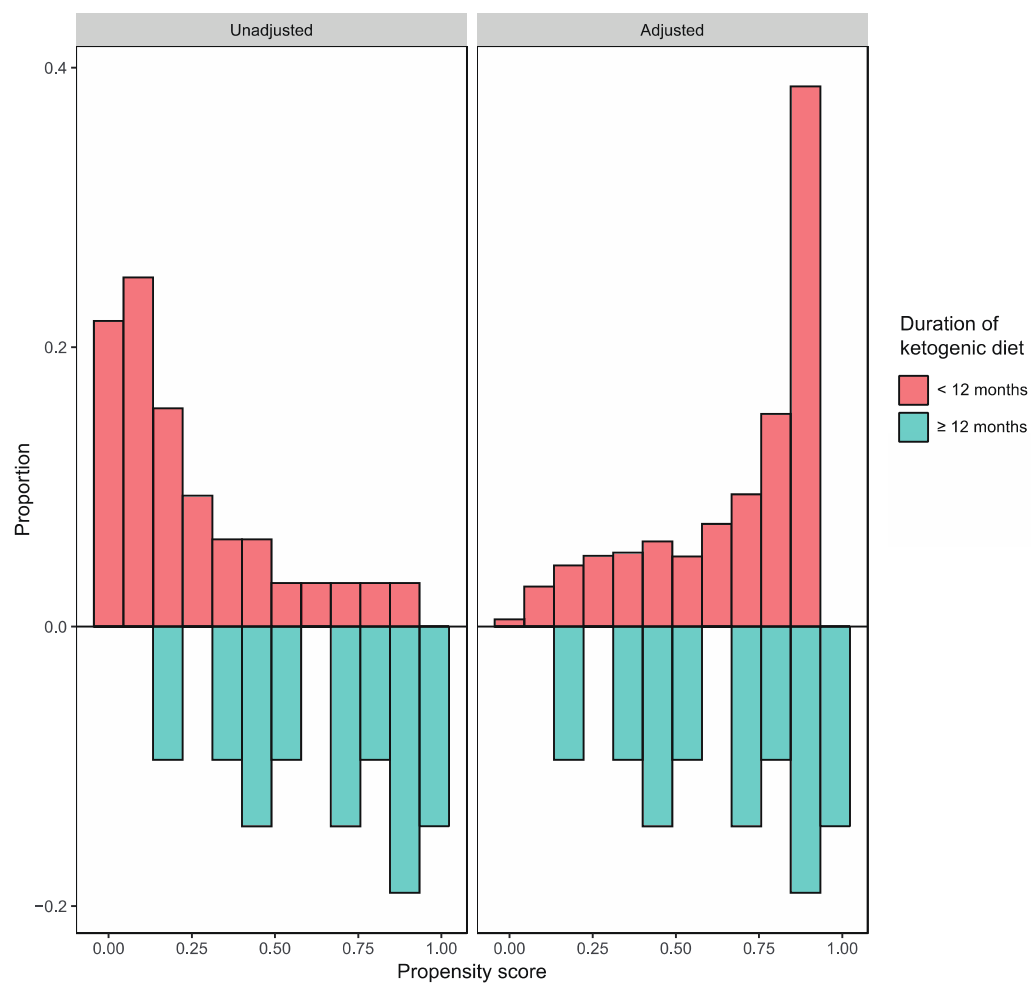


Figure S4. Distributions of propensity scores before and after adjustment.