

Figure S1: Schematic diagram of mice treatment.

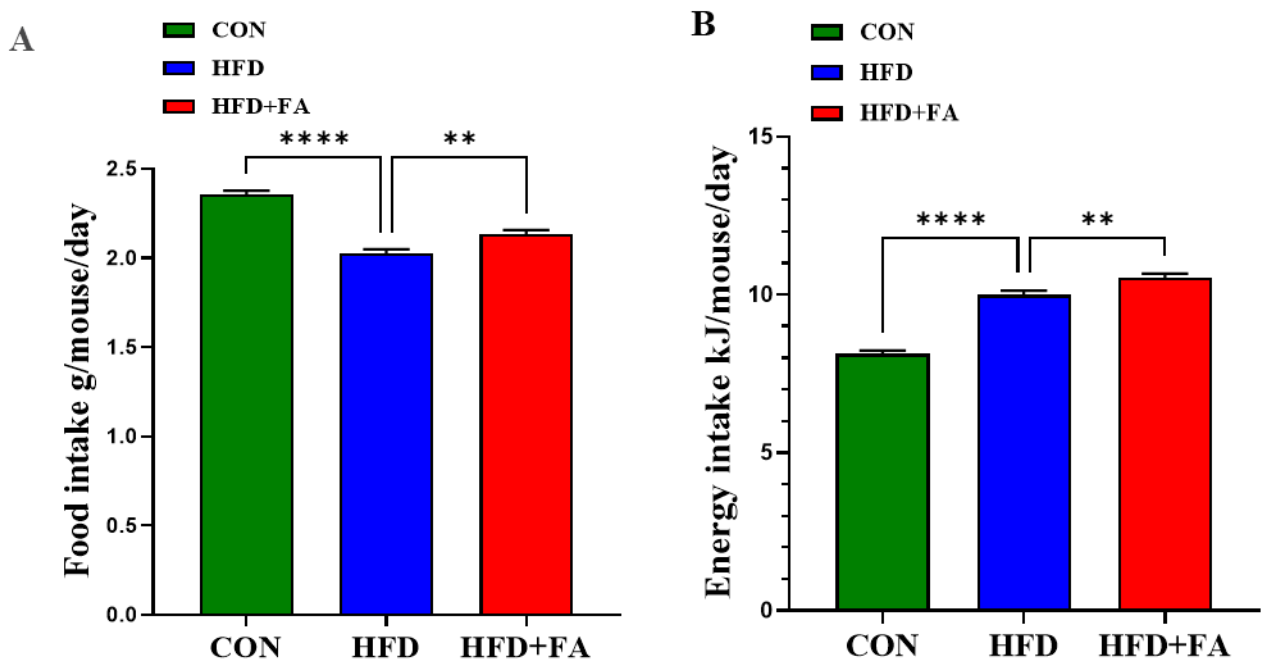


Figure S2: Effects of FA supplementation on food intake (A) and energy intake (B) in HFD-fed mice. Data are represented as mean \pm SEM. ** $p < 0.01$, **** $p < 0.0001$.

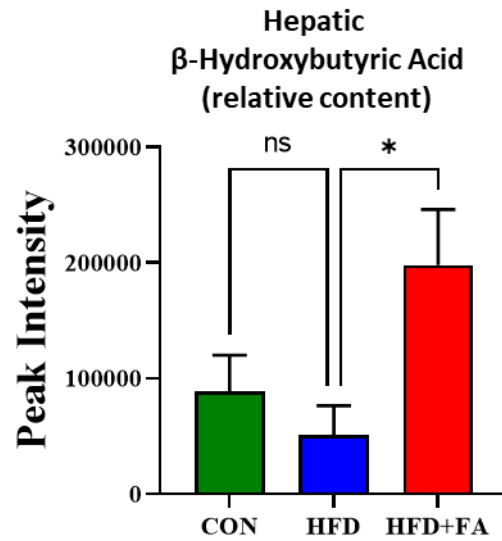


Figure S3: Effects of FA supplementation on hepatic β-hydroxybutyric acid in HFD-fed mice. Data are represented as mean ± SEM. * $p < 0.05$.

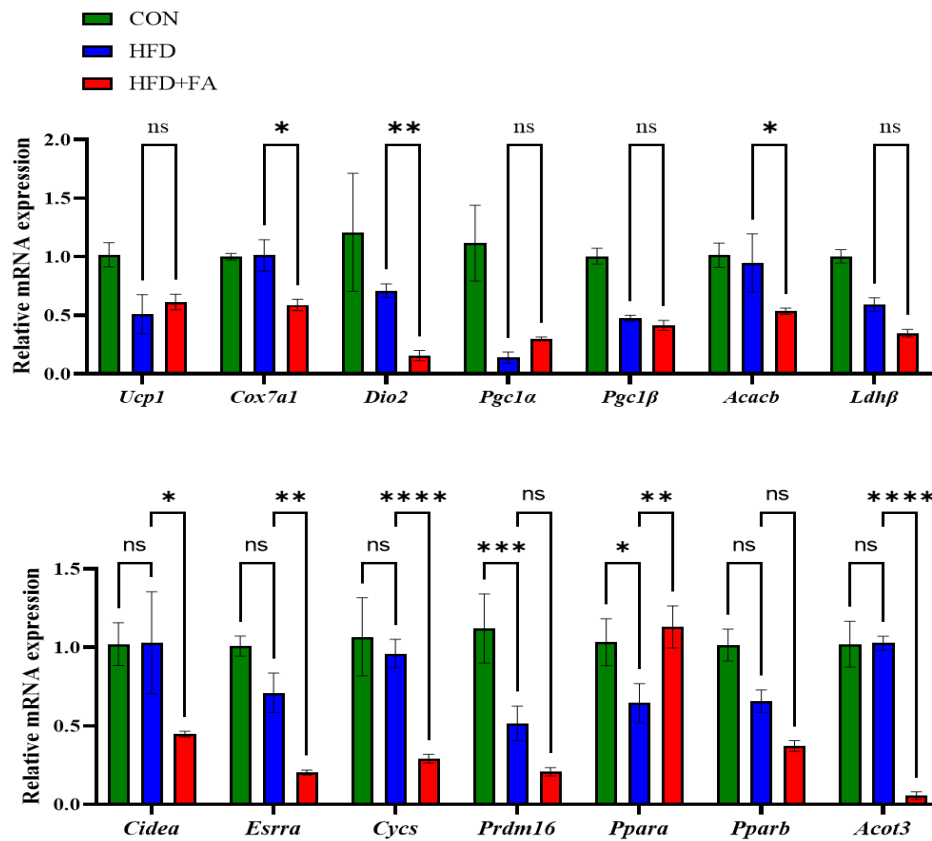


Figure S4: The expression of genes involved in lipolysis and fatty acid oxidation in brown adipose tissue. Data are represented as mean \pm SEM. * $p < 0.05$, ** $p < 0.01$, *** $p < 0.001$, **** $p < 0.0001$.

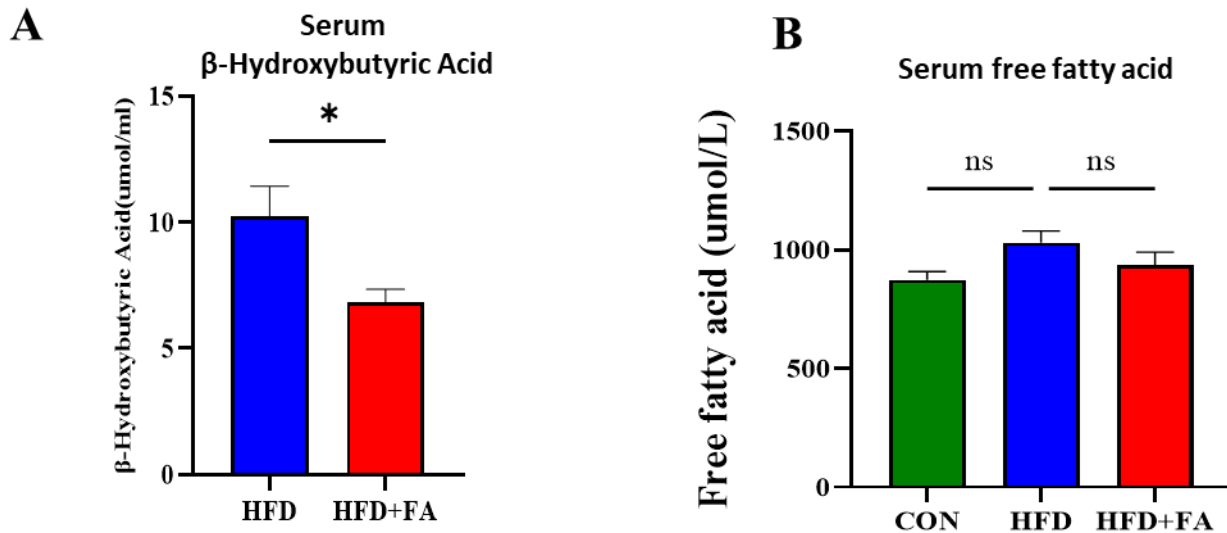


Figure S5: Effects of FA supplementation on serum(A) β -hydroxybutyric acid and free fatty acid (B) concentration in HFD-fed mice. Data are represented as mean \pm SEM. * $p < 0.05$.