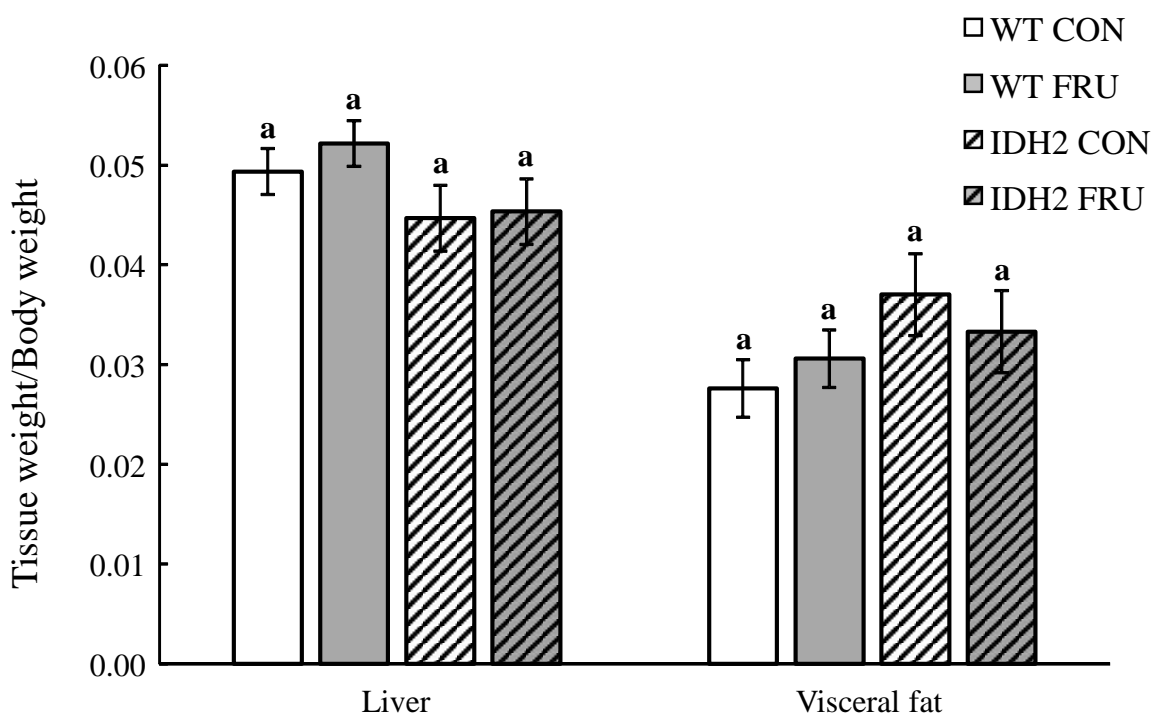
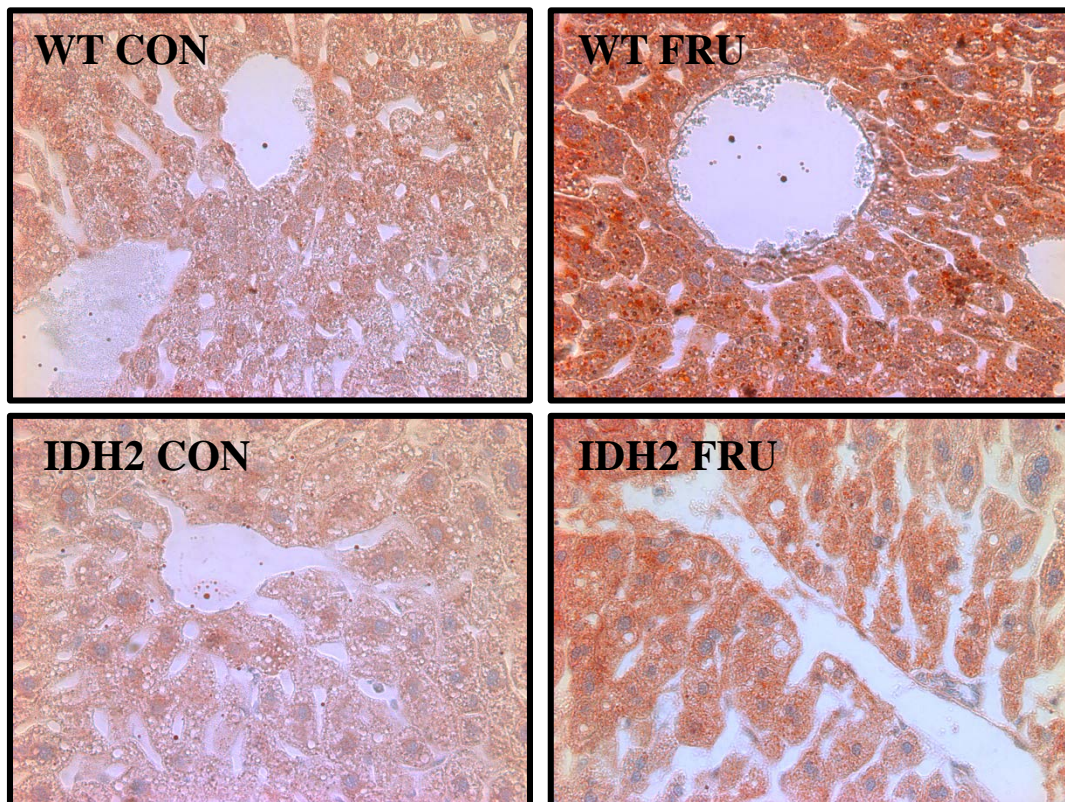


A**B**

Supplementary material 1. Tissue weights of liver, and visceral adipose tissue in male mice were represented as the ratio of tissue weights to final body weight (A). Hepatic lipid accumulation of male mice were assessed by Oil Red O staining (B). All data are presented as the LSM \pm SEM and $P < 0.05$ was considered statistically significant.