

Selected Physiological Effects of a *Garcinia gummi-gutta* Extract in Rats Fed with Different Hypercaloric Diets

Supplementary Material:

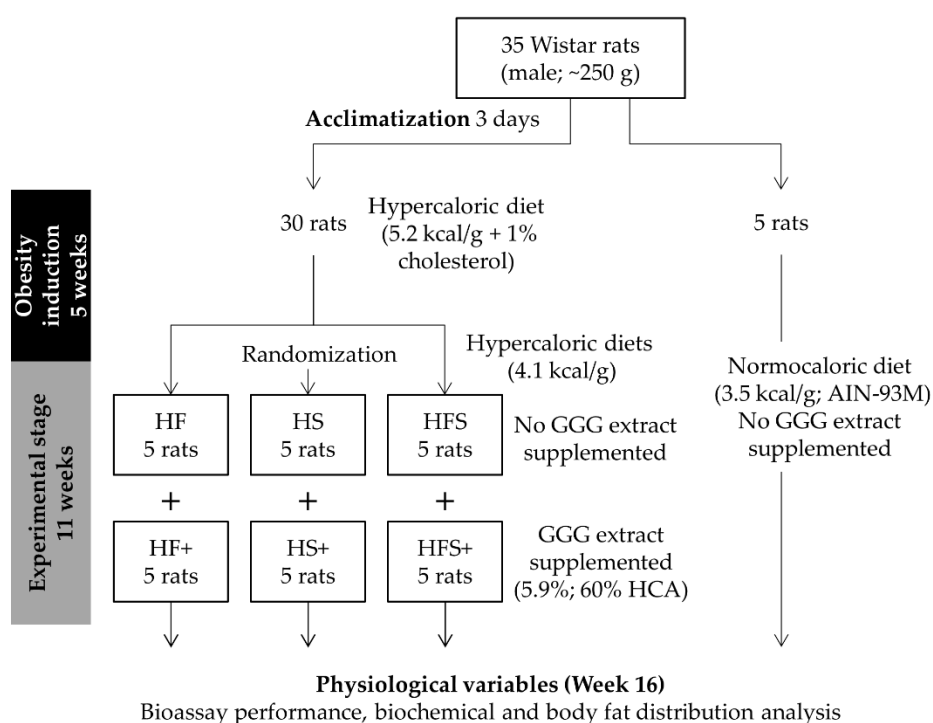


Figure S1. Experimental design (flowchart). *Garcinnia gummi-gutta* rind extract (GGG). Diet nomenclature is described within the text.

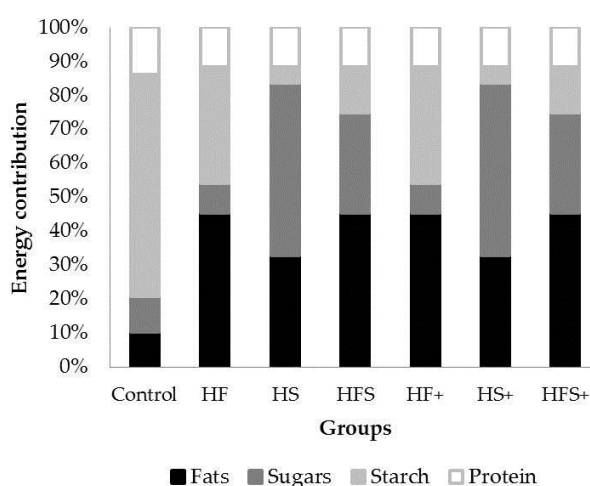


Figure S2. Caloric contribution of macronutrients in experimental diets. High fat (HF), high sugar (HS), western (high fat/sugar; HFS) alone or supplemented with GGG rind extract (HF+, HS+, HFS+).