

# Supplementary Materials: Mapping Vulnerable Urban Areas Affected by Slow-Moving Landslides Using Sentinel-1 InSAR Data

Marta Béjar-Pizarro, Davide Notti, Rosa M. Mateos, Pablo Ezquerro, Giuseppe Centolanza, Gerardo Herrera, Guadalupe Bru, Margarita Sanabria, Lorenzo Solari, Javier Duro and José Fernández

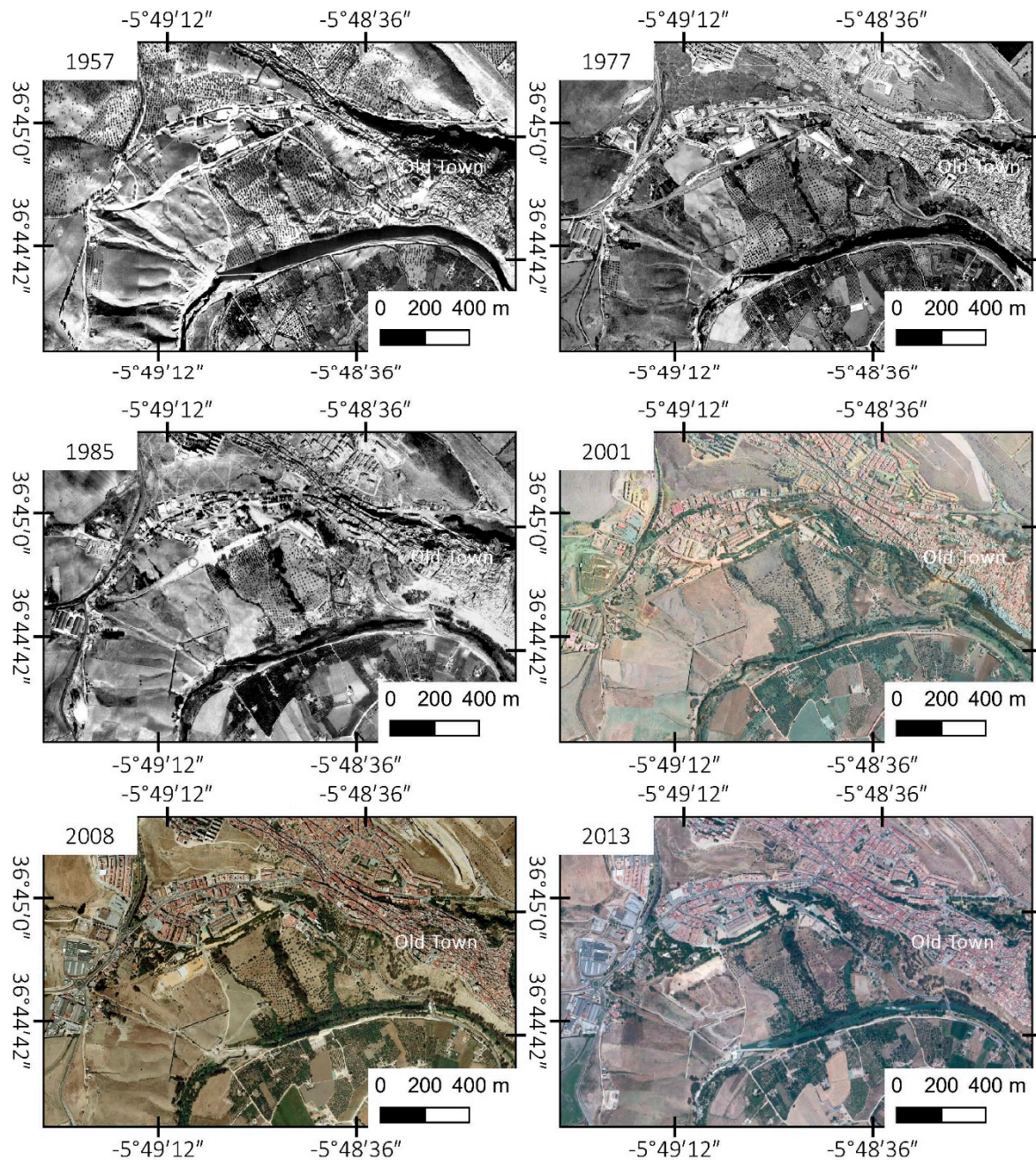
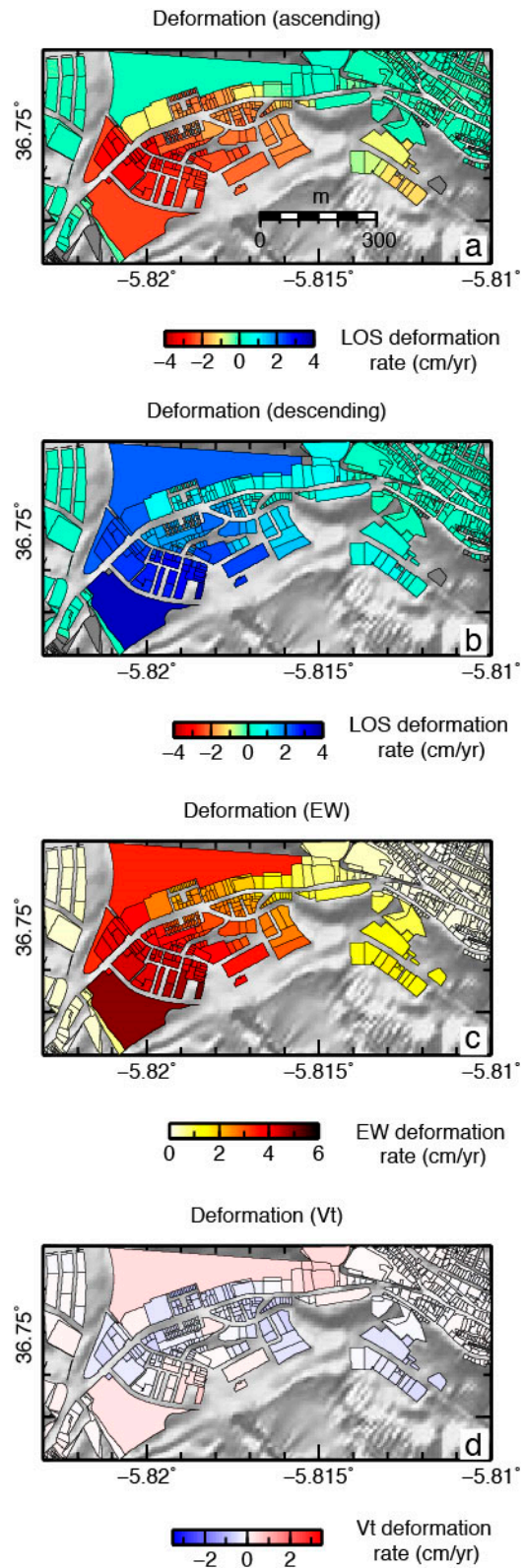


Figure S1. Orthoimages showing the evolution of the study area from 1956 to 2013.



**Figure S2.** Building deformation estimated from ascending, descending, eastward, and vertical ground deformation rates.

