

Article

Performance Metrics for Soil Moisture Downscaling Methods: Application to DISPATCH Data in Central Morocco

Olivier Merlin ^{1,2,*}, Yoann Malbêteau ², Youness Notfi ³, Stefan Bacon ², Salah Er-Raki ³, Saïd Khabba ¹ and Lionel Jarlan ^{1,2}

¹ Faculté des Sciences Semlalia Marrakech (FSSM), Avenue Prince Moulay Abdellah, BP 2390, Marrakech 40000, Morocco; E-Mail: khabba@uca.ma

² Centre d'Etudes Spatiales de la Biosphère (CESBIO), 18 Avenue, Edouard Belin, bpi 2801, Toulouse 31401, France; E-Mails: yoann.malbeteau@cesbio.cnes.fr (Y.M.); stefan.bacon@cesbio.cnes.fr (S.B.); lionel.jarlan@cesbio.cnes.fr (L.J.)

³ Faculté des Sciences et Techniques (FST), Avenue Abdelkarim Khettabi, BP 549, Marrakech 40000, Morocco; E-Mails: notfi.youness@gmail.com (Y.N.); s.erraki@uca.ma (S.E.-R.)

* Author to whom correspondence should be addressed; E-Mail: olivier.merlin@cesbio.cnes.fr; Tel.: +212-524-431-626.

Academic Editors: Nicolas Baghdadi and Prasad S. Thenkabail

Received: 30 September 2014 / Accepted: 17 March 2015 / Published: 30 March 2015

Abstract: Data disaggregation (or downscaling) is becoming a recognized modeling framework to improve the spatial resolution of available surface soil moisture satellite products. However, depending on the quality of the scale change modeling and on the uncertainty in its input data, disaggregation may improve or degrade soil moisture information at high resolution. Hence, defining a relevant metric for evaluating such methodologies is crucial before disaggregated data can be eventually used in fine-scale studies. In this paper, a new metric, named G_{DOWN} , is proposed to assess the potential gain provided by disaggregation relative to the non-disaggregation case. The performance metric is tested during a four-year period by comparing 1-km resolution disaggregation based on physical and theoretical scale change (DISPATCH) data with the soil moisture measurements collected by six stations in central Morocco. DISPATCH data are obtained every 2–3 days from 40-km resolution SMOS (Soil Moisture Ocean Salinity) and 1-km resolution optical MODIS (Moderate Resolution Imaging Spectroradiometer) data. The correlation coefficient between G_{DOWN} and the disaggregation gain in time series correlation, mean bias and bias in the slope of the linear fit ranges from 0.5 to 0.8. The new metric is found to be a good

indicator of the overall performance of DISPATCH. Especially, the sign of G_{DOWN} (positive in the case of effective disaggregation and negative in the opposite case) is independent of the uncertainties in SMOS data and of the representativeness of localized *in situ* measurements at the downscaling (1 km) resolution. In contrast, the traditional root mean square difference between disaggregation output and *in situ* measurements is poorly correlated (correlation coefficient of about 0.0) with the disaggregation gain in terms of both time series correlation and bias in the slope of the linear fit. The G_{DOWN} approach is generic and thus could help test a range of downscaling methods dedicated to soil moisture and to other geophysical variables.

Keywords: downscaling; validation; metric; soil moisture; disaggregation based on physical and theoretical scale change (DISPATCH) data

1. Introduction

Since the advent of spaceborne microwave sensors in the late 1970s, various large-scale surface soil moisture products have been derived from C- and/or X-band data collected by the Scanning Multichannel Microwave Radiometer (SMMR) [1], followed by the Special Sensor Microwave/Imager (SSM/I) [2], Advanced Microwave Instrument (AMI) [3], Advanced Microwave Scanning Radiometer (AMSR) [4] and Advanced Scatterometer (ASCAT) [5], among others. More recently, the first space mission dedicated to observing surface soil moisture globally was launched in November, 2009 [6]. Soil Moisture and Ocean Salinity (SMOS) opens the path for L-band radiometers, with an improved sensitivity to soil moisture as compared with previous radiometers operating at higher frequencies, together with a decreased sensitivity to perturbing factors, such as vegetation optical depth and soil roughness. The forthcoming Soil Moisture Active Passive (SMAP) [7] mission is scheduled for launch in early 2015. It will ensure the continuity of L-band microwave data for global soil moisture monitoring.

The accuracy in surface soil moisture products available from space keeps improving. Nevertheless, the current spatial resolution of microwave radiometers and scatterometers is still lower than 40 km, which is very coarse for most hydrological and agricultural applications. In this context, a number of downscaling strategies of the surface soil moisture derived from microwave data have been imagined. They vary with respect to input ancillary data (e.g., optical data [8], radar data [9], topography and soil depth [10]), the nature (physical, semi-empirical, empirical) of scale change modeling and the underlying physical assumptions (*i.e.*, how soil moisture is linked to available fine-scale modeled or observational information). It is worth noting that the principle of SMAP is based on the disaggregation of L-band brightness temperatures using higher resolution radar backscatter data [11].

A major effort has been and is still being undertaken to evaluate the uncertainty in various soil moisture products [12]. Yet, to date, little work has focused on the strategy to assess soil moisture downscaling methods. Table 1 lists some recently published disaggregation methods [11,13–26]. For each method, Table 1 reports the performance metrics that were used to assess the error statistics in

downscaled data, whether such results were compared with those obtained at high resolution in the non-disaggregation case and the nature (spatial, temporal and/or spatio-temporal) of the comparison between disaggregated and reference (often *in situ*) measurements. One observes that most authors use the root mean square difference (RMSD) and correlation coefficient (R) between disaggregated soil moisture and reference measurements. The use of the mean bias (B) and the slope of the linear regression (S) between disaggregated soil moisture and reference measurements is less general. More strikingly, a 40% of the recent publications do not include a comparison of the error statistics obtained at high resolution with and without disaggregation, so that the gain provided at the fine scale by applying the disaggregation is difficult to assess quantitatively.

Table 1. Metrics used to assess the error statistics of several recent disaggregation methods: root mean square difference (RMSD), correlation coefficient (R), mean bias (B) and slope of the linear regression (S) between high-resolution disaggregated and fine-scale true soil moisture estimates. The column LR (for low resolution) is checked if error statistics are evaluated against those obtained in the non-disaggregation case: by comparing at high resolution the low-resolution observation with fine-scale true estimates. It is also mentioned whether validation is done in space (on the satellite overpass time), in time (per station) and/or using a mixed spatio-temporal dataset (with several stations on several satellite overpass times).

Reference	RMSD	R	B	S	LR	Space	Time	Space&Time
Choi and Hur [13]	x	x	x	x	x		x	
Das <i>et al.</i> , [11]	x				x			x
Fang <i>et al.</i> , [14]	x			x	x	x		x
Ines <i>et al.</i> , [15]	x	x					x	
Kim and Hogue [16]	x	x		x	x	x		x
Merlin <i>et al.</i> , [27]	x	x	x	x	x	x		x
Merlin <i>et al.</i> , [18]	x	x	x	x	x	x		x
Parinussa <i>et al.</i> , [19]	x	x					x	
Piles <i>et al.</i> , [20]	x	x	x	x				x
Sánchez-Ruiz <i>et al.</i> , [21]	x	x	x				x	
Shin and Mohanty [22]		x	x				x	
Song <i>et al.</i> , [23]	x	x					x	
Srivastava <i>et al.</i> , [24]	x	x	x		x		x	
Srivastava <i>et al.</i> , [25]	x	x	x		x		x	
Zhao and Li [26]	x	x		x	x	x	x	

Evaluating specifically a soil moisture downscaling method is complex because of: (i) the impact (at multiple scales) of uncertainties in (multi-resolution) input data: and (ii) the possible non-representativeness of reference (*in situ*) measurements at the validation scale. The issue of validating downscaling methods is further compounded by the scarcity of spatialized ground data. Given that spatial disaggregation is primarily a spatial (not temporal) processing of data, the validation exercise should ideally be done at the time of satellite overpass by comparing disaggregated data with simultaneous distributed ground data. Due to the lack of spatial soil moisture data, disaggregation methods are

most often evaluated against time series collected by localized permanent or semi-permanent automatic monitoring stations (see Table 1).

An interesting parallel is made with another adjacent research: the disaggregation of kilometric land surface temperature at hectometric resolution. One major discrepancy between surface soil moisture downscaling and land surface temperature downscaling is that the land surface temperature is currently observed at high-resolution by ASTER (Advanced Spaceborne Thermal Emission and Reflection Radiometer) and Landsat at approximately the same time as low-resolution MODIS (Moderate Resolution Imaging Spectroradiometer) temperature. Therefore, temperature downscaling methods can be evaluated in space using high-resolution ASTER/Landsat images [27–32]. Such a spatial validation is in general not feasible with soil moisture downscaling methods, except when using data collected over focused areas during short-term intensive field and/or airborne campaigns [33,34].

Facing the current lack of a consistent strategy to evaluate soil moisture downscaling methods using *in situ* time series, the objective of this paper is to propose and to assess various performance metrics in a case study. The approach is tested using a disaggregated soil moisture dataset and *in situ* measurement time series collected during the 2010–2013 period at six locations in the Haouz plain, central Morocco [35–38]. The downscaled dataset is obtained from the disaggregation of 40-km resolution SMOS soil moisture at 1-km resolution using MODIS data and DISPATCH (disaggregation based on physical and theoretical scale change; [17,18]) methodology. The evaluation of DISPATCH at 1-km resolution in central Morocco is especially challenging due to: (i) potentially strong topographic effects on MODIS temperature; and (ii) the presence of crop irrigation at a scale (typically 3–4 ha) much smaller than the target downscaling resolution. These conditions are however particularly suitable for our analysis, since DISPATCH is expected to cover a large range of performances with possible significant biases in the output data relative to *in situ* measurements. Note that the objective of the paper is not to demonstrate the applicability of DISPATCH in mountainous areas as this would require a robust approach to normalize MODIS land surface temperature for the combined effects of elevation and orientation, e.g., [39–41].

This paper is organized as follows. In Section 2, we provide a description of the study area, ground monitoring sites and DISPATCH data. Section 3 defines the metrics used to assess the performance of DISPATCH in various surface and atmospheric conditions. Section 4 presents the results obtained by conventional and new validation strategies and discusses the weaknesses and strengths of the tested performance metrics.

2. Site and Data Description

Our analysis is based on the comparison between a disaggregation dataset obtained from SMOS Level 3 product and the *in situ* soil moisture measurements collected in the Haouz plain (region of Marrakech, Central Morocco) during the 2010–2013 period.

2.1. Study Area

The study region is the Tensift basin located in central Morocco (see Figure 1). The ~20,000 km² basin originates in the High-Atlas Mountains, and the Haouz River flows west towards the Atlantic Ocean

through a semi-arid plain. Annual rainfall ranges from around 150 mm in the driest part of the plain to about 1,000 mm in the mountains, while annual evaporative demand in the plain is about 1,600 mm, according to the reference evapotranspiration calculated for well-watered grass [42]. The precipitation events mainly occur from November to April.

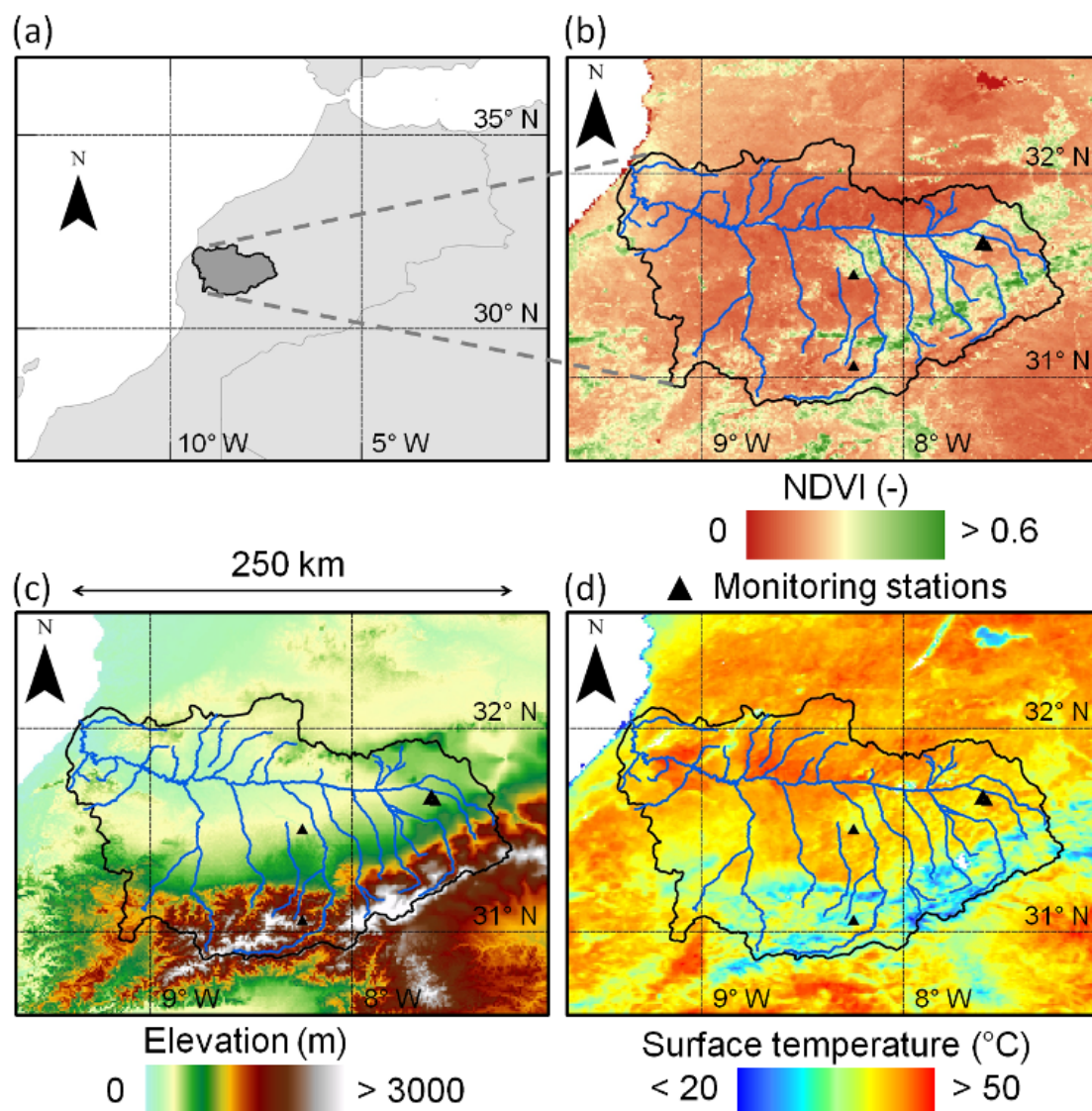


Figure 1. (a) Overview map of the Tensift basin in Morocco and (b) images over the Tensift basin of MODIS NDVI, (c) elevation and (d) MODIS land surface temperature on 5 October 2013.

Within the Haouz plain, about 85% of available water is used for agriculture. Major irrigated vegetation types include olive, orange, apricot, beet and wheat. Wheat is generally sown between mid November and mid January, depending on climatic conditions and the start of the rainfall season, and the harvest occurs about 5–6 months after, in May or June. Ground water is used in priority for orchards, but can also be used for cereal in the case of a high shortage of dam water. Annual crops are periodically irrigated by flooding the entire field. The typical field size is about 3–4 ha. The number of irrigation rounds (0–6) and the global amount of water per round (generally more than 60 mm in equivalent-water depth) depend on the dam water levels [35].

The High-Atlas culminates up to 4,000 m above sea level at the Toubkal summit, only 60 km away from Marrakech city. The basin is hence characterized by a significant topographic and vegetation variation and a highly variable climate, making it an ideal test bed to evaluate soil moisture downscaling methods in heterogeneous, but challenging conditions.

2.2. In Situ Measurements

In the framework of the SudMedresearch program [37] and of Télédétection et Ressources en Eau en Méditerranée semi-Aride (TREMA) Joint International Laboratory, several flux and meteorological stations were deployed over the dominant vegetation types (olive, orange, apricot, beet and wheat) and under different irrigation methods (drip and flooding) with the objective to understand the processes that affect the water and energy balances of semi-arid areas at the basin scale. Monitoring stations were set up for several years at orchards sites and for the whole crop cycle (sowing, vegetative growth, full canopy and senescence) at annual crop (mostly wheat and beet) sites [37,38]. Since the SMOS launch in November 2009, six stations have operated with two in orchard fields and four in annual crop fields. The location and crop type of the six monitoring stations used in this paper are listed in Table 2. At each site, time domain reflectometry (TDR) probes (Model CS615; Campbell Scientific, Inc.) were installed in a soil pit near the flux tower to measure soil water content at different soil depths. Only the TDR measurements collected at a 5-cm depth with a time step of 30 min are used.

Table 2. Soil moisture monitoring stations.

Site	Longitude	Latitude	Cropping	Irrigation	Clay	Sand
Agafay	−8.2452	31.5049	orange	drop	0.18	0.50
Ait Imour	−8.2449	31.0575	apricot	drop	0.18	0.50
Beet' 12	−7.6201	31.6495	sugar beet	drop	0.36	0.20
Wheat' 12	−7.6057	31.6738	wheat	gravity fed	0.36	0.20
Wheat' 13 North	−7.5845	31.6457	wheat	gravity fed	0.36	0.20
Wheat' 13 South	−7.5839	31.6449	wheat	gravity fed	0.36	0.20

As gravimetric measurements from soil samples were not available for all studied sites, another calibration approach of TDR measurements was preferred. To transform TDR observations into volumetric soil moisture, the raw measurements were linearly re-scaled by setting the minimum and maximum value to the residual soil moisture and the soil moisture at saturation, respectively. The underlying assumption that both extreme values have been reached is justified by the relatively long monitoring duration (at least one whole agricultural season). For each site, the residual soil moisture and the soil moisture at saturation were estimated from the clay and sand fractions using the pedo-transfer functions in [43] and [44], respectively.

Figure 2 plots the time series of the calibrated near-surface soil moisture for each site separately. The impact of different irrigation practices and timing on soil moisture temporal dynamics is clearly visible, even for the Wheat' 13 North and Wheat' 13 South fields located only 100 m apart from each other.

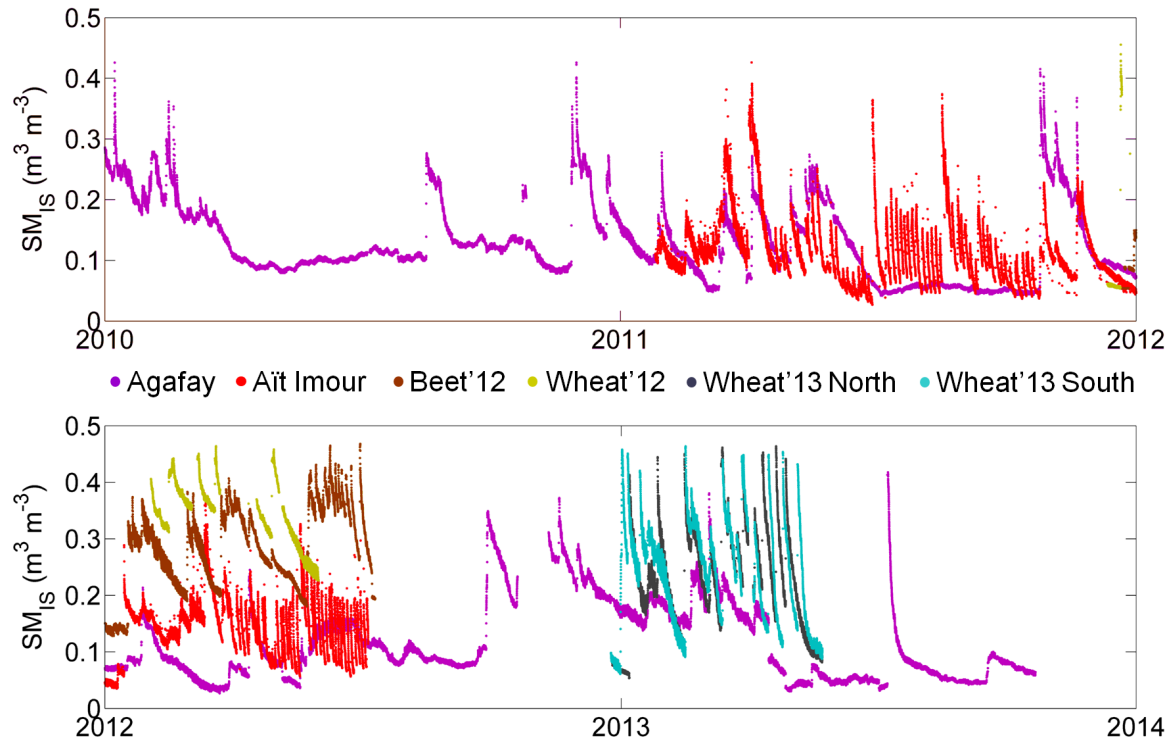


Figure 2. *In situ* soil moisture time series.

2.3. Disaggregation Based on Physical and Theoretical Scale Change Data

2.3.1. Downscaling Method

The current version of the DISPATCH methodology has been fully described in [17] and [18]. In this section, we briefly present the downscaling relationship, which represents the core and theoretical basis of the algorithm:

$$SM_{HR} = SM_{LR} + \dot{SM}(SEE_{LR}) \times (SEE_{HR} - SEE_{LR}) \quad (1)$$

with SM_{HR} being the high-resolution (HR) disaggregated soil moisture, SM_{LR} the low resolution (LR) observation, SEE_{HR} the soil evaporation efficiency (defined as the ratio of actual to potential soil evaporation) estimated at high resolution, SEE_{LR} its integrated value at low resolution and $\dot{SM}(SEE_{LR})$ the partial derivative of SM relative to SEE estimated at low resolution. This derivative is computed as the inverse of the derivative of a $SEE(SM)$ model. In [18], the $SEE(SM)$ model is simply:

$$SEE = \frac{SM}{SM_P} \quad (2)$$

with SM_P being an empirical or semi-empirical parameter depending on soil properties and atmospheric conditions. Hence, the derivative in the downscaling relationship is:

$$\dot{SM} = SM_P \quad (3)$$

The main complexity and probably the main source of uncertainty in DISPATCH is the estimation of SEE_{HR} from red, near-infrared and land surface temperature input data. Readers are referred to [17] and [18] for a detailed description of the approach, especially the partitioning approach of land surface

temperature into soil and vegetation temperatures and the modeling of SEE as a function of soil temperature. Note that in the last version of DISPATCH [18], the land surface temperature is “corrected” for elevation effects by assuming a constant lapse rate of 6 °C per km.

2.3.2. Input Data

In this study, the input data of DISPATCH are comprised of 0.25° gridded SMOS Level 3 soil moisture, 1-km resolution MODIS NDVI (Normalized Difference Vegetation Index) and land surface temperature and 1-km resolution DEM (digital elevation model) data.

The SMOS Level 3 one-day soil moisture global map (P11p or MIR_CLF31A/D) product is used. It is composed of two data files, one for the ascending (A) orbit at 6 a.m. equator crossing time and the other for the descending (D) orbit at 6 p.m. equator crossing time. These products are presented in NetCDF format on the EASE (equal area scalable Earth) grid with a ~25-km cylindrical projection. Details on the processing algorithms can be found in the Algorithm Theoretical Baseline Document [45] and in the Level 3 data product description [46].

MODIS products Terra/MOD11A1 (daily land surface temperature at 10:30 a.m. Equator crossing time), Aqua/MYD11A1 (daily land surface temperature at 1:30 p.m. Equator crossing time) and Terra/MOD13A2 (16-day vegetation indices at 10:30 a.m. Equator crossing time) are used. All three MODIS products are presented in HDF format on a sinusoidal projection with a 1-km resolution. Figure 1 presents the 1-km resolution images over the study area of Terra NDVI and Aqua land surface temperature on 5 October 2013.

To correct land surface temperature for elevation effects, the GTOPO30 DEM is used. It has a 30-arc second (approximately 1 km) resolution and is split into 33 tiles stored in the USGS DEM file format. Figure 1 presents the 1-km resolution elevation image over the study area.

The DISPATCH Input Interface (DII) is a processor dedicated to downloading and pre-processing DISPATCH input data. DII downloads the SMOS Level 3 product from the CATDS (Centre Aval de Traitement des Données SMOS) and MODIS data through the USGS LP DAAC (Land Processes Distributed Active Archive Center). Pre-processing consists of: (i) reprojecting the exogenous datasets on a common grid with consistent spatial resolutions; (ii) extracting multi-source data over a given user-defined spatial extent; and (iii) generating an input ensemble for each SMOS overpass time by including the MODIS data acquired on the day before, the same day and the day after the SMOS overpass date [47].

2.3.3. Disaggregation Based on Physical and Theoretical Scale Change Products

In this paper, two different 1-km resolution DISPATCH products are used. One product, named $sm1k3d$, is obtained by setting SM_P to SM_{LR}/SEE_{LR} in Equation (3) by assuming a linear relationship (see Equation (2)) between SEE and SM [48]. Another product, named $sm50k3$, is obtained by setting $SM_P = 0$ in Equation (3) so that 1-km disaggregated soil moisture is simply set to low-resolution observation. $sm50k3$ represents our “zero-hypothesis”, that is the non-disaggregation scenario.

Both products, $sm1k3d$ and $sm50k3$, are derived from the average of the DISPATCH output ensemble for each SMOS overpass time. An output ensemble is obtained by applying DISPATCH to an input

ensemble composed of no more than 24 elements per (A and D) SMOS overpass associated with the combination of four SMOS re-sampling grids (by taking advantage of the Level 3 SMOS data oversampling), three MODIS overpass dates (by taking into account the MODIS data collected within plus or minus one day around the SMOS overpass) and two daily MODIS observations (aboard Terra and Aqua). The number of elements used to compute this average is called DISPATCH count and is stored in the output product. The DISPATCH count is often smaller than 24 due to gaps in MODIS data associated with cloud cover and/or to limited overlap with SMOS swath width. A description of DISPATCH products is available in [47]. Figure 3 presents an example of the 1-km resolution image over the study area of sm50k3, sm1k3d and the DISPATCH count on 6 October 2013 for the SMOS D overpass. Note that the disaggregation image presents a slight boxy artifact at low (SMOS) resolution. Such an artifact is typical of downscaling methods like DISPATCH that apply a conservation law at low resolution (meaning that the average of disaggregated SM at SMOS resolution is set to SMOS observation). In our case, several factors could possibly explain this effect, such as some uncorrected topographic effects and a significant nonlinear behavior of SEE as a function of SM (and an associated misestimate of SM_p at low resolution).

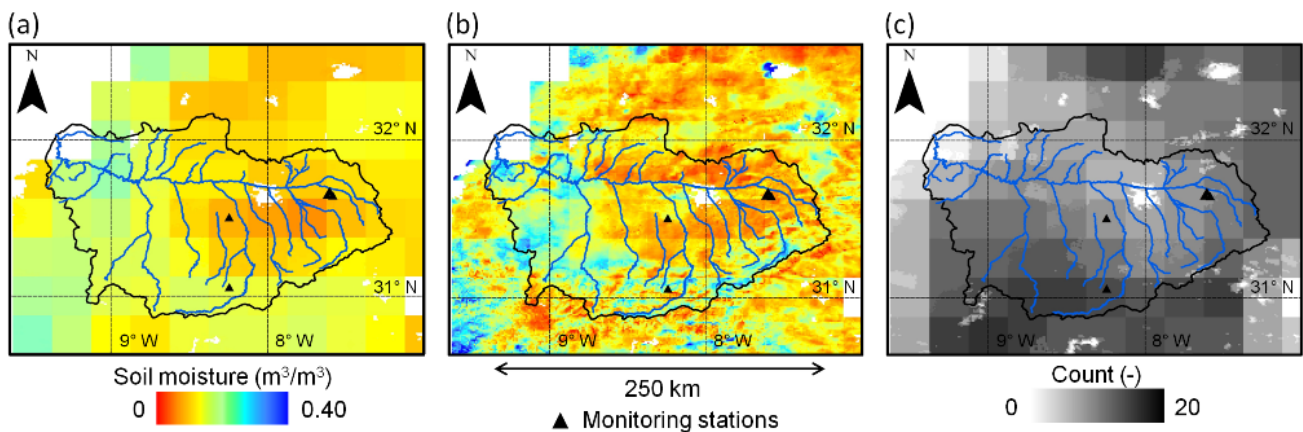


Figure 3. Images over the Tensift basin of: (a) Soil Moisture Ocean Salinity (SMOS) soil moisture (SM_{LR}); (b) 1-km resolution disaggregation based on physical and theoretical scale change (DISPATCH) soil moisture (SM_{HR}); and (c) DISPATCH input data count on 6 October 2013.

Since sm50k3 contains basically the same information as the low-resolution observation, sm50k3 will be referred to as SM_{LR} in the following. Consistently, sm1k3d will be referred to as SM_{HR} .

3. Performance Metrics

3.1. Conventional Metrics

The traditional root mean square difference between satellite and *in situ* soil moisture is defined as:

$$RMSD_{XR} = \sqrt{E[(SM_{XR} - SM_{IS})^2]} \quad (4)$$

with $E[.]$ being the expectation operator, SM_{XR} the satellite soil moisture retrieved at XR resolution (HR or LR) and SM_{IS} the localized *in situ* measurement. This metric is used extensively to assess soil moisture

products and many other remotely-sensed geophysical variables. RMSD is generally recognized as a good performance metric, as it integrates the three main components characterizing data quality, which are: time series correlation, mean bias and bias in the variance. Nevertheless, the sensitivity of RMSD to any bias in either the mean or the amplitude of fluctuations in the retrieval may prevent its use to assess the potential of a given soil moisture dataset for a specific geophysical application [12]. Hence, another traditional metric is also used. The time series correlation between satellite and *in situ* soil moisture is defined as:

$$R_{XR} = \frac{E[(SM_{XR} - E[SM_{XR}])(SM_{IS} - E[SM_{IS}])]}{\sigma_{XR}\sigma_{IS}} \quad (5)$$

with σ_{XR} being the standard deviation of satellite soil moisture and σ_{IS} the standard deviation of *in situ* soil moisture. R is related to RMSD, but provides complementary information, as it is fully independent of any bias in the mean or in the variance.

To better characterize the quality of disaggregated data, two other performance metrics may be used in addition to RMSD and R: the mean difference (or mean bias) between satellite and *in situ* soil moisture:

$$B_{XR} = E[SM_{XR}] - E[SM_{IS}] \quad (6)$$

and the slope of the linear regression between satellite and *in situ* soil moisture:

$$S_{XR} = R_{XR} \times \frac{\sigma_{XR}}{\sigma_{IS}} \quad (7)$$

The mean bias defined in Equation (6) is independent of R, as mentioned above, and is also independent of any bias in the variance. The slope of the linear regression defined in Equation (7) is independent of B, but depends on R. However, S and R provide complementary information, since for a given $|R_{HR}|$ value, $|S_{HR}|$ can range from zero to $+\infty$ by varying σ_{HR} . Note that this reasoning is valid only when the time series correlation is significant. For R close to zero, S is necessarily bounded by the physical bounds of soil moisture, which ranges from about zero to the soil moisture at saturation.

3.2. On the Downscaling Performance

A downscaling method as a measurement system can be accurate, but not precise, precise, but not accurate, neither, or both. Eliminating a systematic error at LR (*i.e.*, the mean bias) improves accuracy at HR, but does not change precision at HR. The precision of a downscaling algorithm is the degree to which repeated application under unchanged conditions shows the same downscaled value. In this paper, the terms “accuracy” and “precision” thus refer to B and R, respectively. However, one aspect is still missing to describe downscaling performance: a downscaling method can be precise ($R_{HR} \sim 1$) and accurate ($B_{HR} \sim 0$), but with varying efficiencies (downscaled values cover different ranges). In this paper, the term “efficiency” refers to S. Note that the σ could be used instead of S. The main problem is that σ is not an indicator of the efficiency of disaggregation. One can imagine a random noise having the same σ_{HR} as σ_{IS} , but with $S_{HR} \sim 0$. The use of S_{HR} is hence a better choice than σ_{HR} .

A systematic effect when increasing the observation scale is the decrease of spatio-temporal variance in the observed variable. As a result, from the point of view of the spatio-temporal variability in soil moisture and its impact on the validation strategy of satellite retrievals, the S between LR observation and a localized (*in situ*) measurement should be in any case lower than one. The main purpose of disaggregation methods is then to improve the spatial representativeness of remotely-sensed soil moisture

at higher resolution. If the downscaling approach is efficient, then the S between satellite retrievals and *in situ* soil moisture should increase and be closer to one in the disaggregation case, relative to the non-disaggregation case. Among the four metrics RMSD, R, B and S, the S is probably the most appropriate metric to evaluate a downscaling methodology. Nevertheless, R, B and S are complementary, and thus, R and B potentially provide useful information in addition to S.

3.3. New Metrics Dedicated to Downscaling Methods

The performance metric proposed in this paper to assess soil moisture downscaling methods is termed G_{DOWN} and is defined as:

$$G_{\text{DOWN}} = (G_{\text{EFFI}} + G_{\text{PREC}} + G_{\text{ACCU}})/3 \quad (8)$$

The first term is the disaggregation (efficiency) gain on the bias in the slope of the linear fit relative to the non-disaggregation case:

$$G_{\text{EFFI}} = \frac{|1 - S_{\text{LR}}| - |1 - S_{\text{HR}}|}{|1 - S_{\text{LR}}| + |1 - S_{\text{HR}}|} \quad (9)$$

with S_{HR} and S_{LR} being the slope of the linear regression between soil moisture retrievals and *in situ* measurements computed in Equation (7) with R_{HR} and σ_{HR} and with R_{LR} and σ_{LR} , respectively. G_{EFFI} can be interpreted as characterizing the efficiency of the disaggregation method. It is positive for S_{HR} closer to +1 than S_{LR} , negative in the opposite case, equal to +1 for $S_{\text{HR}} = 1$ and tends to -1 for $|1 - S_{\text{HR}}| \gg |1 - S_{\text{LR}}|$.

The second term in Equation (8) is the disaggregation (precision) gain on time series correlation relative to the non-disaggregation case:

$$G_{\text{PREC}} = \frac{|1 - R_{\text{LR}}| - |1 - R_{\text{HR}}|}{|1 - R_{\text{LR}}| + |1 - R_{\text{HR}}|} \quad (10)$$

with R_{HR} and R_{LR} being the time series correlation computed with SM_{HR} and SM_{LR} in Equation (5), respectively. G_{PREC} can be interpreted as characterizing the precision of the disaggregation method to be evaluated. It is positive for $R_{\text{HR}} > R_{\text{LR}}$, negative in the opposite case, equal to +1 for $R_{\text{HR}} = 1$ and tends to -1 for $|R_{\text{HR}}| \ll |R_{\text{LR}}|$.

The third term is the disaggregation (accuracy) gain on the mean bias relative to the non-disaggregation case:

$$G_{\text{ACCU}} = \frac{|B_{\text{LR}}| - |B_{\text{HR}}|}{|B_{\text{LR}}| + |B_{\text{HR}}|} \quad (11)$$

with B_{HR} and B_{LR} being the mean bias computed with SM_{HR} and SM_{LR} in Equation (6), respectively. G_{ACCU} can be interpreted as characterizing the accuracy of the disaggregation method. It is positive for $|B_{\text{HR}}| < |B_{\text{LR}}|$, negative in the opposite case, equal to +1 for $B_{\text{HR}} = 0$ and tends to -1 for $|B_{\text{HR}}| \gg |B_{\text{LR}}|$.

Note that Equation (8) could include weighting coefficients to weigh the three partial gains (G_{EFFI} , G_{PREC} and G_{ACCU}) differently. However, no *a priori* information is available to give priority to one particular partial gain. As a first guess, G_{DOWN} is thus defined as the simple arithmetic average of all three partial gains.

Even though all three components (covariance, mean bias and bias in variance) are contained in the RMSD, the advantage of G_{DOWN} over the RMSD is two-fold: (1) G_{DOWN} is computed relatively to

the non-disaggregation case, so it is better suited to relative comparisons; and (2) the relative nature of G_{DOWN} makes it *a priori* much less sensitive than the RMSD to any bias in the mean or in the variance (the sensitivity of G_{DOWN} to a given bias in mean or variance also depends on the respective weight of each partial gain). Moreover, the normalization of S_{HR} , R_{HR} and B_{HR} (by S_{LR} , R_{LR} and B_{LR}) is a way to significantly reduce the impact on the performance metric of: (1) uncertainties in LR data; and (2) the lack of representativeness of localized *in situ* measurements at the downscaling resolution. The absolute value of G_{DOWN} characterizes both the downscaling performance and the (normalized) difference between the representativeness of *in situ* measurements at HR and LR. However, the positive (or negative) sign of G_{DOWN} can be considered, statistically speaking, as independent of the representativeness of *in situ* measurements at both HR and LR.

As a benchmark to evaluate the approach, the last performance metric is also tested:

$$G_{\text{RMSD}} = \frac{\text{RMSD}_{\text{LR}} - \text{RMSD}_{\text{HR}}}{\text{RMSD}_{\text{LR}} + \text{RMSD}_{\text{HR}}} \quad (12)$$

with RMSD_{HR} and RMSD_{LR} being the RMSD computed with SM_{HR} and SM_{LR} in Equation (4), respectively. It is positive for $\text{RMSD}_{\text{HR}} < \text{RMSD}_{\text{LR}}$, negative in the opposite case, equal to +1 for $\text{RMSD}_{\text{HR}} = 0$ and tends to -1 for $\text{RMSD}_{\text{HR}} \gg \text{RMSD}_{\text{LR}}$.

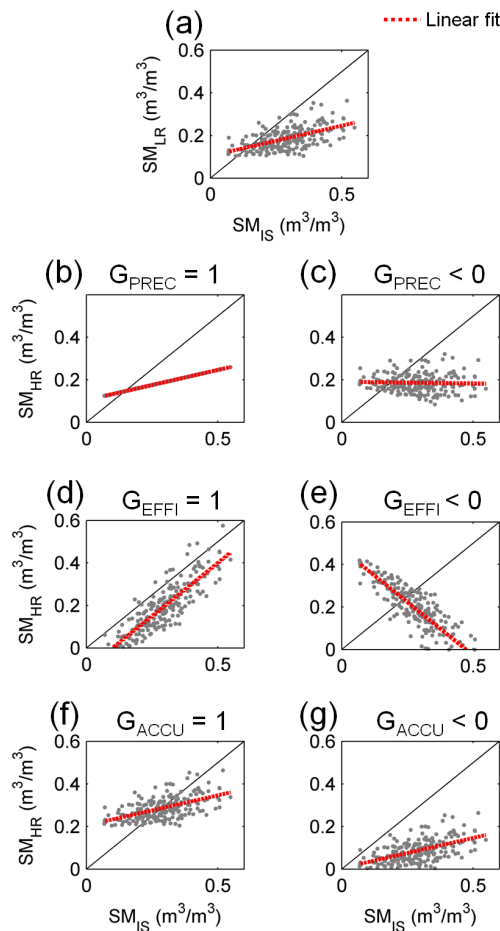


Figure 4. (a) LR vs. *in situ* soil moisture (synthetic data). (b–g) High resolution (HR) disaggregated vs. *in situ* soil moisture for six different disaggregation scenarios (synthetic data).

For illustration purposes, Figure 4 presents seven graphs: one graph (a) plotting (synthetic) LR observation *vs.* (synthetic) localized true soil moisture, and six other graphs (b–g) plotting (synthetic) HR disaggregated *vs.* (synthetic) localized true soil moisture for six disaggregation scenarios. In Case b, disaggregation improves R, and the S and B are unchanged. In Case c, disaggregation degrades both R and S, and B is unchanged. In Case d, disaggregation improves both S and R, and B is unchanged. In Case e, disaggregation degrades the S, while |R| and B remain the same as in Case d. In Case f, disaggregation improves B, while both S and R remain unchanged. In Case g, disaggregation degrades B, while both S and R remain unchanged. The above examples illustrate the capacity of the three performance metrics G_{PREC} , G_{EFFI} and G_{ACCU} to characterize the error structure of downscaled data and to specifically extract information about the positive (or negative) gain provided at HR by disaggregation.

4. Results and Discussion

In this section, the three performance metrics $RMSD_{HR}$, G_{RMSD} and G_{DOWN} are assessed from an ensemble of DISPATCH and *in situ* soil moisture datasets. Such an ensemble is generated by comparing DISPATCH soil moisture with the *in situ* measurements collected by each of the six stations separately, for the two SMOS overpass times separately, for two different DISPATCH count thresholds and for five different time periods (spring, summer, autumn, winter and the whole time series). In total, the ensemble is theoretically composed of $6 \times 2 \times 2 \times 5 = 120$ elements. In practice, a lower number is achieved due to gaps in ground measurements, especially for the stations dedicated to intensive field experiments in 2012 and 2013.

Figure 5 compares the scatterplots of LR soil moisture (SM_{LR}) *vs.* *in situ* measurements (SM_{IS}) and HR disaggregated soil moisture (SM_{HR}) *vs.* *in situ* measurements for each site separately. For orchard sites (Agafay and Aït Imour), disaggregation appears to reduce the mean bias in satellite retrievals, but also to increase the scatter/uncertainty with respect to *in situ* measurements. For annual crop sites (Beet'12, Wheat'12, Wheat'13 North and Wheat'13 South), a strong negative bias is visible in both non-disaggregated and disaggregated data, indicating that the soil moisture variability occurs at a scale significantly higher than the DISPATCH 1-km resolution. It is to be reminded that the typical size of crops in the area is 3–4 ha, that is 20–30-times smaller than the downscaling resolution of DISPATCH in this application. Nevertheless, DISPATCH data seem to be slightly less biased than non-disaggregated data. When increasing the DISPATCH count threshold from three to 10 (see the results in Figure 6), a similar interpretation can be given for all (orchard and annual crop) sites, with a more noticeable improvement of disaggregation in terms of both mean bias and slope of the linear regression between satellite retrievals and *in situ* measurements.

Table 3 reports the error statistics for each site (whole time series), for each SMOS orbit and for each DISPATCH count threshold (three and 10) separately. The count of samples included in the computation of performance metrics is also indicated as an assessment of statistical significance. It can be observed that disaggregation systematically reduces a negative bias in SMOS observations with respect to localized *in situ* measurements. Since all ground data were collected over irrigated areas surrounded by dry lands, a negative bias in coarse-scale SMOS data was expected. The reduction of the mean bias at 1-km resolution indicates that DISPATCH is able to somehow better represent (but not to

fully solve) the sub-pixel variability in soil moisture. Consistent with a decrease of the mean bias, G_{ACCU} is positive in all cases. Regarding the time series correlation and the bias in the slope of the linear fit, mixed results are obtained: disaggregation alternatively improves or degrades data quality. Consistently, the disaggregation gain in precision (G_{PREC}) and efficiency (G_{EFFI}) is positive in 52% and 65% of the cases, respectively.

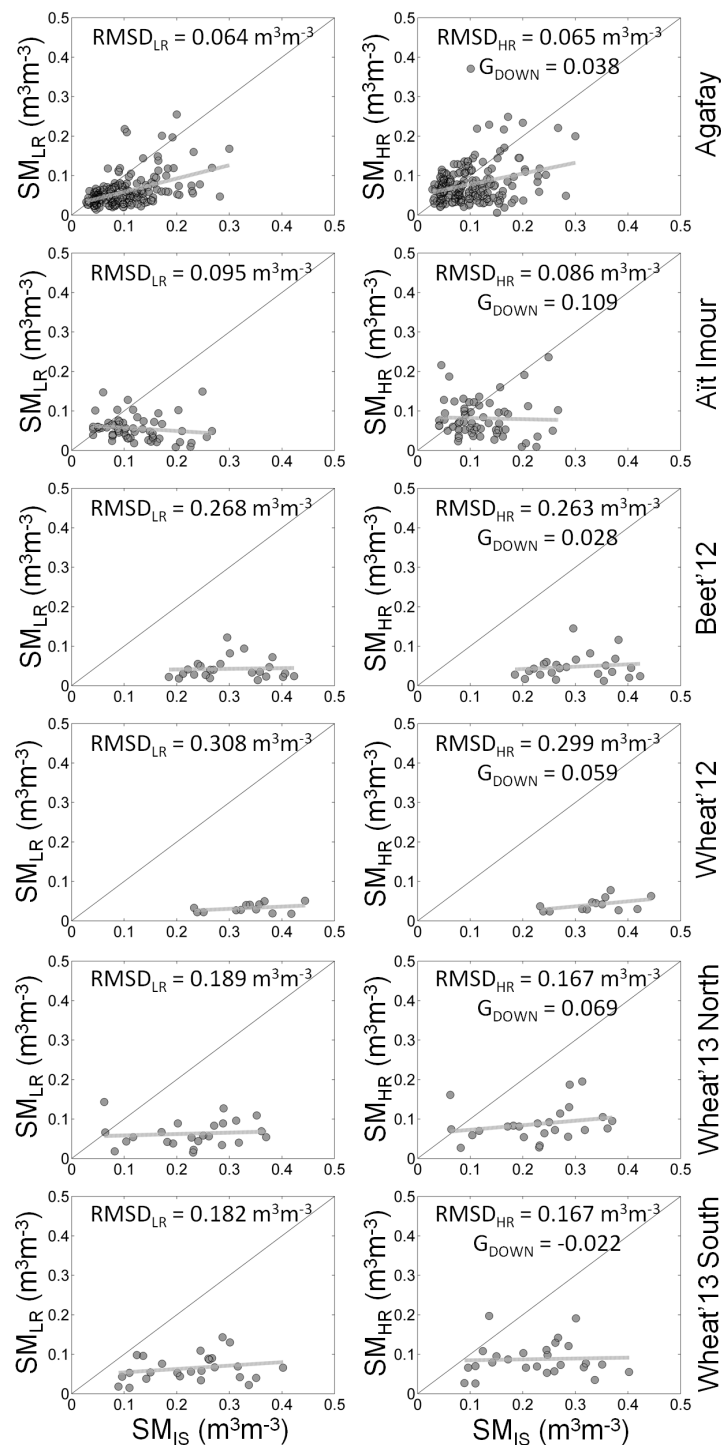


Figure 5. LR (left) and HR disaggregated (right) soil moisture vs. *in situ* measurements for each site separately (whole time series) and for a DISPATCH count threshold set to three (SMOS ascending (A) overpass).

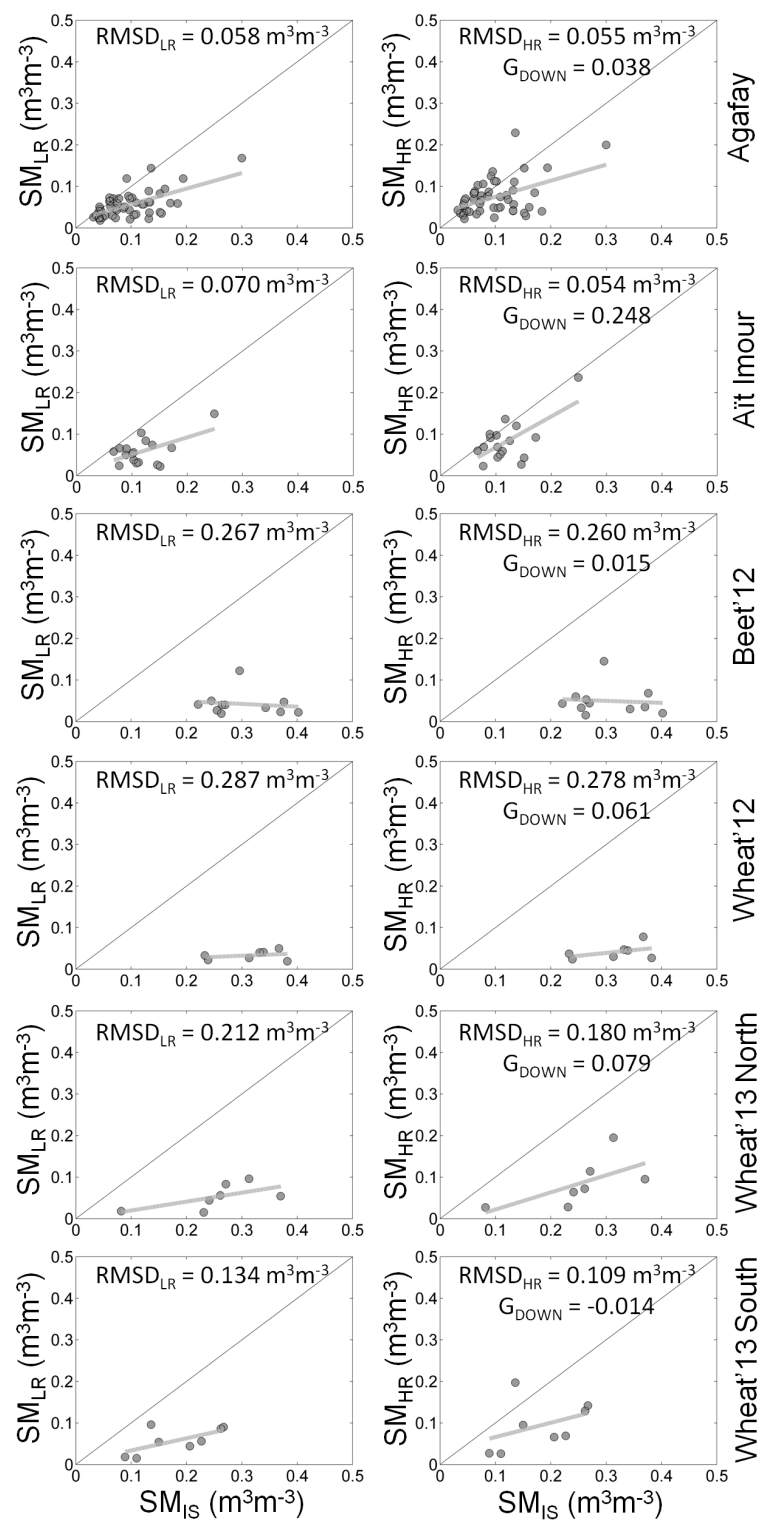


Figure 6. Same as in Figure 5, but for a DISPATCH count threshold set to 10.

Table 3. Statistical results presented for each site, each SMOS orbit (A for ascending and D for descending) and two DISPATCH count thresholds (3 and 10), separately.

Site	DISPATCH Threshold	Orbit	Sample Counts	R _{HR}	S _{HR}	B _{HR} m ³ m ^{−3}	RMSD _{HR} m ³ m ^{−3}	R _{LR}	S _{LR} m ³ m ^{−3}	B _{LR} m ³ m ^{−3}	RMSD _{LR} m ³ m ^{−3}	G _{PREC}	G _{EFFI}	G _{ACCU}	G _{DOWN}	G _{RMSD}
Agafay	3	A	185	0.299	0.273	0.022	0.065	0.471	0.337	−0.041	0.064	−0.139	−0.046	0.300	0.038	−0.006
Agafay	3	D	127	0.032	0.029	−0.010	0.072	0.240	0.136	−0.035	0.065	−0.120	−0.059	0.547	0.123	−0.047
Agafay	10	A	49	0.461	0.385	−0.024	0.055	0.616	0.375	−0.042	0.058	−0.168	0.008	0.275	0.038	0.029
Agafay	10	D	32	0.140	0.096	−0.022	0.068	0.316	0.127	−0.045	0.071	−0.114	−0.018	0.349	0.072	0.019
Aït Imour	3	A	60	−0.033	−0.028	−0.040	0.086	−0.159	−0.084	−0.065	0.095	0.058	0.027	0.244	0.109	0.051
Aït Imour	3	D	37	0.080	0.077	−0.016	0.075	−0.011	−0.006	−0.055	0.083	0.047	0.043	0.547	0.213	0.049
Aït Imour	10	A	17	0.646	0.742	−0.037	0.054	0.559	0.414	−0.061	0.070	0.109	0.389	0.245	0.248	0.136
Aït Imour	10	D	9	−0.267	−0.370	−0.042	0.093	−0.123	−0.071	−0.086	0.101	−0.060	−0.123	0.347	0.055	0.042
Beet'12	3	A	24	0.134	0.059	−0.253	0.263	0.043	0.016	−0.258	0.268	0.050	0.022	0.011	0.028	0.010
Beet'12	3	D	21	−0.211	−0.083	−0.245	0.262	−0.168	−0.081	−0.246	0.263	−0.018	−0.001	0.001	−0.006	0.003
Beet'12	10	A	11	−0.085	−0.049	−0.251	0.260	−0.137	−0.064	0.258	0.267	0.024	0.007	0.015	0.015	0.013
Beet'12	10	D	3	−0.220	−0.079	−0.240	0.241	0.276	0.104	−0.246	0.247	−0.255	−0.093	0.013	−0.112	0.012
Wheat'12	3	A	13	0.481	0.126	−0.293	0.299	0.332	0.058	−0.302	0.308	0.125	0.037	0.015	0.059	0.015
Wheat'12	3	D	8	0.819	0.431	−0.314	0.315	0.883	0.326	−0.325	0.327	−0.212	0.085	0.018	−0.036	0.018
Wheat'12	10	A	7	0.436	0.137	−0.274	0.278	0.281	0.054	−0.282	0.287	0.121	0.046	0.014	0.061	0.015
Wheat'12	10	D	2	-	-	-	-	-	-	-	-	-	-	-	-	-
Wheat'13 North	3	A	24	0.239	0.115	−0.141	0.167	0.099	0.036	−0.165	0.189	0.084	0.043	0.080	0.069	0.063
Wheat'13 North	3	D	14	0.016	0.006	−0.168	0.195	−0.027	−0.007	−0.194	0.217	0.021	0.007	0.071	0.033	0.052
Wheat'13 North	10	A	7	0.632	0.413	−0.168	0.180	0.630	0.214	−0.200	0.212	0.003	0.144	0.089	0.079	0.083
Wheat'13 North	10	D	4	0.624	0.828	−0.187	0.190	0.303	0.292	−0.213	0.215	0.299	0.609	0.063	0.324	0.063
Wheat'13 South	3	A	26	0.045	0.022	−0.139	0.167	0.229	0.086	−0.161	0.182	−0.107	−0.034	0.075	−0.022	0.042
Wheat'13 South	3	D	16	0.164	0.074	−0.144	0.166	0.011	0.004	−0.165	0.185	0.083	0.036	0.067	0.062	0.054
Wheat'13 South	10	A	8	0.400	0.345	−0.087	0.109	0.642	0.293	−0.124	0.134	−0.253	0.038	0.173	−0.014	0.100
Wheat'13 South	10	D	4	−0.058	−0.048	−0.127	0.141	0.403	0.253	−0.150	0.156	−0.278	−0.168	0.082	−0.121	0.051

One key advantage of G_{DOWN} over the other performance metrics is to provide an estimate of the overall improvement in soil moisture data with a single value. Within our data ensemble, G_{DOWN} is positive in 74% of the cases, indicating that DISPATCH generally improves the representation of soil moisture at 1-km resolution. From the point of view of the G_{RMSD} metric (defined in Equation (12)), disaggregation improves the root mean square difference between satellite retrievals and *in situ* soil moisture in 91% of the cases, which is significantly larger than the positive disaggregation cases predicted by G_{DOWN} . This apparent discrepancy is explained by the strong dependency of the RMSD metric to B, thus hiding the potential impact of R and S on disaggregation data quality. Note that a mean bias can be typically attributed to uncertainties in LR observations and to a lack of spatial representativeness of (localized) *in situ* measurements at the validation scale (1-km resolution in our case). Hence, the use of other metrics than B and RMSD is especially needed when attempting to evaluate a downscaling method with a relative independency of errors in LR observations and of the spatial representativeness of reference validation data. As a summary, G_{DOWN} provides a single quality assessment of disaggregated data while being based on three relevant and complementary performance metrics, which are S, R and B.

As a step further in the assessment of performance metrics, RMSD_{HR} , G_{RMSD} and G_{DOWN} are plotted against G_{PREC} , G_{EFFI} and G_{ACCU} in Figures 7–9, respectively. RMSD_{HR} is a poor indicator of the disaggregation gain in terms of both precision (time series correlation) and efficiency (bias in the slope of the linear fit). However, it is more correlated with the disaggregation gain on the mean bias, due to its strong dependency on B. G_{RMSD} is in general positively correlated with all three performance metrics G_{PREC} , G_{EFFI} and G_{ACCU} . Nevertheless, it seems to be relatively sensitive to the number of samples within the dataset. When decreasing the minimum sample count (from 10 to three), above which error statistics are computed, the correlation between G_{RMSD} and disaggregation gains varies significantly and even changes sign in Figure 8 for the G_{EFFI} case. In contrast, G_{DOWN} appears to be well correlated with all three disaggregation gains in terms of time series correlation, bias in the slope of the linear fit and mean bias. Moreover, G_{DOWN} displays a remarkable stability with respect to the minimum number of data samples: the regression lines for both datasets (corresponding to a minimum sample count of three and 10) are almost superimposed in all cases.

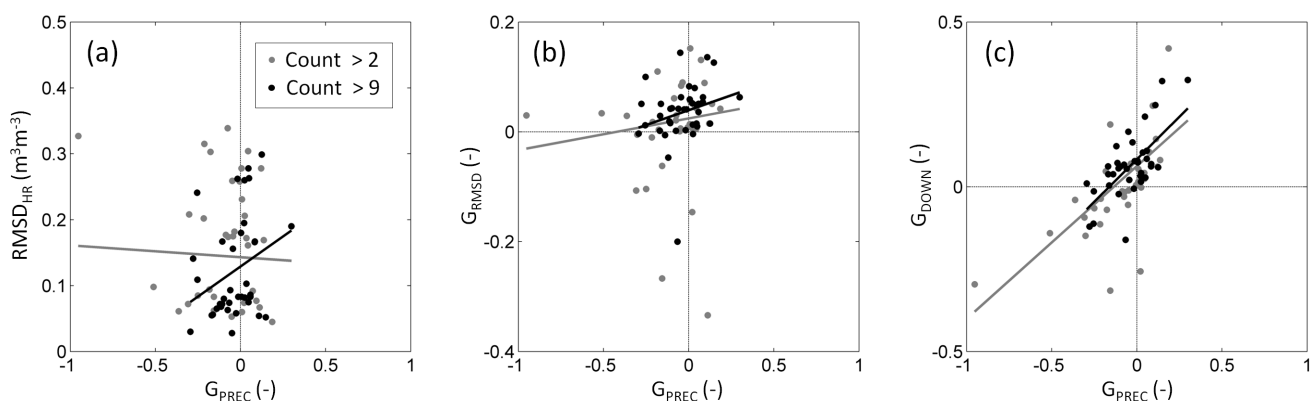


Figure 7. Performance metrics (a–c) vs. the disaggregation gain on time series correlation (G_{PREC}) for datasets with a minimum sample count of three and 10 separately.

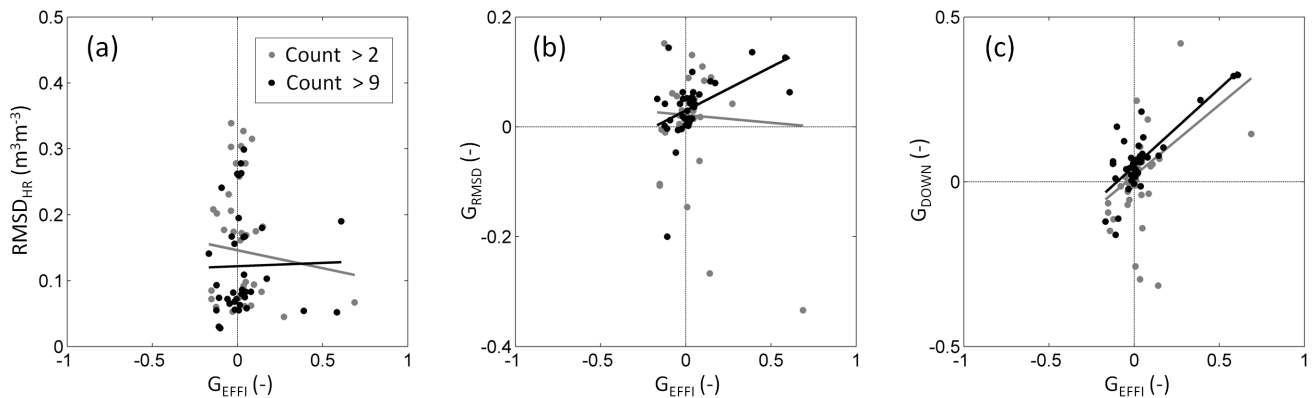


Figure 8. Performance metrics (a–c) vs. the disaggregation gain on the bias in the slope of the linear fit (G_{EFFI}) for datasets with a minimum sample count of three and 10 separately.

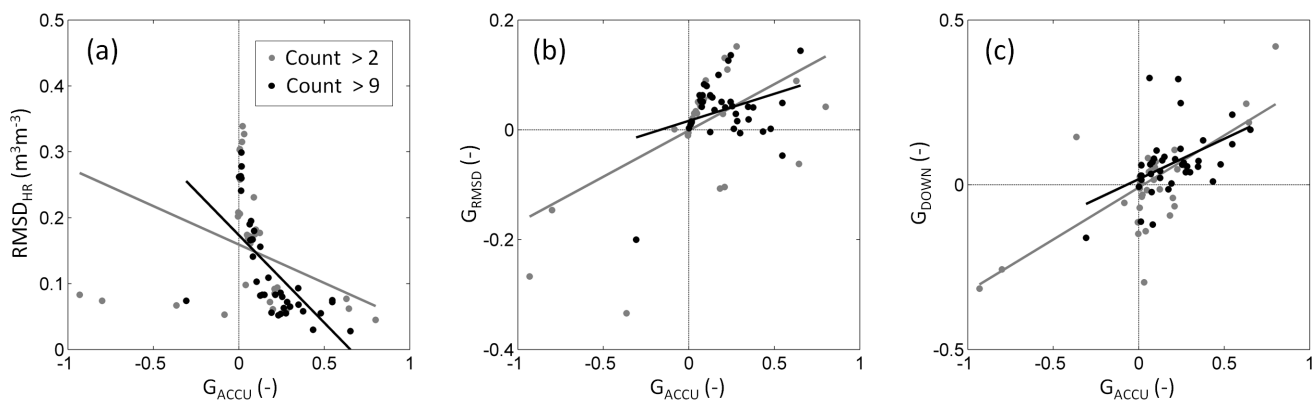


Figure 9. Performance metrics (a–c) vs. the disaggregation gain on the bias in the mean (G_{ACCU}) for datasets with a minimum sample count of three and 10 separately.

Table 4. Correlation coefficient of performance metrics with the disaggregation gain in terms of time series correlation (G_{PREC}), bias in the slope of the linear fit (G_{EFFI}) and bias in the mean (G_{ACCU}) for datasets with a minimum sample count of 3 and 10, separately.

Metric	Sample Count	Correlation Coefficient (-)		
		RMSD_{HR}	G_{RMSD}	G_{DOWN}
G_{PREC}	≥ 3	-0.036	0.127	0.655
G_{EFFI}	≥ 3	-0.096	-0.055	0.534
G_{ACCU}	≥ 3	-0.349	0.552	0.667
All: mean (std)	≥ 3	-0.160 (0.166)	0.208 (0.312)	0.619 (0.074)
G_{PREC}	≥ 10	0.298	0.245	0.659
G_{EFFI}	≥ 10	0.021	0.464	0.779
G_{ACCU}	≥ 10	-0.641	0.327	0.462
All: mean (std)	≥ 10	-0.107 (0.482)	0.345 (0.110)	0.633 (0.160)

Table 4 summarizes the results for the three performance metrics: the traditional root mean square difference between disaggregated and *in situ* soil moisture (RMSD_{HR}), the disaggregation gain in RMSD relative to the non-disaggregation case (G_{RMSD}) and the proposed metric that combines the disaggregation gain in S, R and B relative to the non-disaggregation case (G_{DOWN}). The correlation coefficient between

performance metric and the disaggregation gain on time series correlation, mean bias and bias in the slope of the linear fit ranges from -0.6 to 0.3 , from -0.1 to 0.6 and from 0.5 to 0.8 , for RMSD_{HR} , G_{RMSD} and G_{DOWN} , respectively. The results thus indicate that G_{DOWN} is a relevant, relatively complete and robust performance metric to evaluate soil moisture downscaling methods using *in situ* measurement time series.

5. Summary and Conclusions

A number of disaggregation methods have been recently developed to improve the spatial resolution of available surface soil moisture products with supposedly satisfying uncertainty. Such downscaled soil moisture datasets are generally evaluated against time series of *in situ* measurements. However, a consistent and robust validation strategy of disaggregation methodologies is currently lacking. To help fill the gap, a new performance metric named G_{DOWN} is proposed to quantitatively assess with a single value the overall gain achieved at high resolution. Especially, the sign of G_{DOWN} (positive in the case of effective disaggregation and negative in the opposite case) is independent of the uncertainties in the low-resolution observation and of the representativeness of localized *in situ* measurements at the target downscaling resolution. The proposed G_{DOWN} has four advantages over the conventional metrics (RMSD , B , σ , R and S): (1) the new performance metric provides an assessment of error statistics relative to the non-disaggregation case (unlike any of the traditional metrics); (2) it takes into account the three main aspects for describing data error structure, which are: R , B and σ (like the RMSD); (3) the sign of G_{DOWN} (positive in the case of effective disaggregation, and negative in the opposite case) remains reliable in the presence of any bias in mean or variance (unlike the RMSD); and (4) the ability to define weights (arbitrarily set to one herein) allows for tuning the sensitivity of G_{DOWN} to each of the three partial gains.

The approach is tested using 1-km resolution DISPATCH soil moisture data and *in situ* measurement time series collected during the 2010–2013 period at six locations in the Haouz plain, central Morocco. A statistically meaningful dataset ensemble is built by comparing DISPATCH and *in situ* data for each station separately, for both SMOS overpass times, for two different DISPATCH count thresholds and for five different time periods (spring, summer, autumn, winter and the whole time series). The traditional root mean square difference between disaggregated and *in situ* soil moisture (RMSD_{HR}), the disaggregation gain in RMSD relative to the non-disaggregation case (G_{RMSD}) and G_{DOWN} are compared with the disaggregation gain at high resolution in terms of precision (time series correlation), efficiency (bias in the slope of the linear fit) and accuracy (mean bias). The correlation coefficient between performance metric and disaggregation gain ranges from -0.6 to 0.3 , from -0.1 to 0.6 and from 0.5 to 0.8 , for RMSD_{HR} , G_{RMSD} and G_{DOWN} , respectively. The results indicate that the traditional RMSD_{HR} is a poor indicator of the overall performance of disaggregation. In contrast, G_{DOWN} is a relevant, relatively complete and robust performance metric to evaluate soil moisture downscaling methods using *in situ* measurement time series.

G_{DOWN} evaluates the downscaling performance by a single value containing information about the relative gain in S , R and B , which may be considered as an asset. Nevertheless, the importance of these three aspects (gain in S , R and B) may be dependent on the application. Some users might need

a very precise (*i.e.*, low noise) measurement, whereas others might require, for instance, low mean bias. Therefore, it might be advantageous to keep the different partial gains separated. Note that one assumption of the presented validation strategy is that no bias correction (in either the mean or the variance) is applied to observed or disaggregated soil moisture datasets. If a bias correction is applied before hand [12,49], G_{DOWN} should be expressed as the disaggregation gain in precision (R) only, by discarding the S and B terms, which would be underdetermined in this case. However, a caveat must be issued regarding bias correction. The bias correction of satellite-derived soil moisture products is generally based on soil moisture climatologies, which do not take into account all fine-scale variabilities (crop irrigation for instance) and/or localized *in situ* measurements, which are not representative at the observation resolution. In such conditions, part of the bias (in both the mean and the variance) between low-resolution observations and reference (climatological or *in situ*) soil moisture data is systematically attributed to the sub-pixel spatial heterogeneity. Any bias removal technique applied at low resolution therefore artificially compensates for spatial heterogeneity effects, whereas disaggregation precisely aims to represent the real sub-pixel spatial variability.

The G_{DOWN} approach has potential for evaluating the downscaling methods dedicated to satellite-derived soil moisture, such as SMOS and SMAP products, and to other geophysical variables available from remote sensing, such as land surface temperature and precipitation. It can also be meaningful for evaluating the downscaled land surface model output [50–53]. Such a quantitative assessment is an essential pre-requisite before downscaled data can be efficiently used in fine-scale application studies. Note that the use of soil moisture data in hydrology generally requires observations deeper than the surface soil layer (the top few cm) sensed by microwave radiometers. Therefore, solving the mismatch in the vertical representation would imply the (temporal) assimilation of superficial data into land surface models, *e.g.*, [49,54], and its combination with (spatial) downscaling [55,56].

Acknowledgments

This study was supported by TREMA (Télédétection et Ressources en Eau en Méditerranée semi-Aride) international laboratory, IRD (Institut de Recherche pour le Développement), CNRS (Centre National de la Recherche Scientifique), MISTRALS (Mediterranean Integrated Studies at Regional and Local Scales)/SICMEDMETASIM and ANR (Agence Nationale de la Recherche) MIXMOD-EANR-13-JS06-0003-01 funding.

Author Contributions

Olivier Merlin produced the DISPATCH dataset over the Haouz plain and proposed the performance metrics. Yoann Malbêteau helped on the pre- and post-processing of DISPATCH data. Youness Notfi undertook the calibration of ground measurements. Stefan Bacon developed the first version of DISPATCH Input Interface. Salah Er-Raki, Saïd Khabba and Lionel Jarlan supervised the collection and processing of *in situ* measurements and helped interpret the results.

Conflicts of Interest

The authors declare no conflict of interest.

References

- Owe, M.; de Jeu, R.; Walker, J. A methodology for surface soil moisture and vegetation optical depth retrieval using the microwave polarization difference index. *IEEE Trans. Geosci. Remote Sens.* **2001**, *39*, 1643–1654.
- Paloscia, S.; Macelloni, G.; Santi, E.; Koike, T. A multifrequency algorithm for the retrieval of soil moisture on a large scale using microwave data from SMMR and SSM/I satellites. *IEEE Trans. Geosci. Remote Sens.* **2001**, *39*, 1655–1661.
- Wagner, W.; Lemoine, G.; Rott, H. A method for estimating soil moisture from ERS scatterometer and soil data. *Remote Sens. Environ.* **1999**, *70*, 191–207.
- Njoku, E.; Jackson, T.; Lakshmi, V.; Chan, T.; Nghiem, S. Soil moisture retrieval from AMSR-E. *IEEE Trans. Geosci. Remote Sens.* **2003**, *41*, 215–229.
- Naeimi, V.; Scipal, K.; Bartalis, Z.; Hasenauer, S.; Wagner, W. An improved soil moisture retrieval algorithm for ERS and METOP scatterometer observations. *IEEE Trans. Geosci. Remote Sens.* **2009**, *47*, 1999–2013.
- Kerr, Y.H.; Waldteufel, P.; Wigneron, J.P.; Delwart, S.; Cabot, F.; Boutin, J.; Escorihuela, M.J.; Font, J.; Reul, N.; Gruhier, C.; *et al.* The SMOS mission: new tool for monitoring key elements of the global water cycle. *Proc. IEEE* **2010**, *98*, 666–687.
- Entekhabi, D.; Njoku, E.G.; O'Neill, P.E.; Kellogg, K.H.; Crow, W.T.; Edelstein, W.N.; Entin, J.K.; Goodman, S.D.; Jackson, T.J.; Johnson, J.; *et al.* The Soil Moisture Active Passive (SMAP) mission. *Proc. IEEE* **2010**, *98*, 704–716.
- Chauhan, N.S.; Miller, S.; Ardanuy, P. Spaceborne soil moisture estimation at high resolution: A microwave-optical/IR synergistic approach. *Int. J. Remote Sens.* **2003**, *24*, 4599–4622.
- Bindlish, R.; Barros, A.P. Subpixel variability of remotely sensed soil moisture: An inter-comparison study of SAR and ESTAR. *IEEE Trans. Geosci. Remote Sens.* **2002**, *40*, 326–337.
- Pellenq, J.; Kalma, J.; Boulet, G.; Saulnier, G.M.; Wooldridge, S.; Kerr, Y.; Chehbouni, A. A disaggregation scheme for soil moisture based on topography and soil depth. *J. Hydrol.* **2003**, *276*, 112–127.
- Das, N.N.; Entekhabi, D.; Njoku, E.G.; Shi, J.J.C.; Johnson, J.T.; Colliander, A. Tests of the SMAP combined radar and radiometer algorithm using airborne field campaign observations and simulated data. *IEEE Trans. Geosci. Remote Sens.* **2014**, *52*, 2018–2028.
- Entekhabi, D.; Reichle, R.H.; Koster, R.D.; Crow, W.T. Performance metrics for soil moisture retrievals and application requirements. *J. Hydrometeor.* **2010**, *11*, 832–840.
- Choi, M.; Hur, Y. A microwave-optical/infrared disaggregation for improving spatial representation of soil moisture using AMSR-E and MODIS products. *Remote Sens. Environ.* **2012**, *124*, 259–269.
- Fang, B.; Lakshmi, V.; Bindlish, R.; Jackson, T.J.; Cosh, M.; Basara, J. Passive microwave soil moisture downscaling using vegetation index and skin surface temperature. *Vadose Zone J.* **2013**, *12*, doi:10.2136/vzj2013.05.0089.

15. Ines, A.V.M.; Mohanty, B.P.; Shin, Y. An unmixing algorithm for remotely sensed soil moisture. *Water Resour. Res.* **2013**, *49*, 408–425.
16. Kim, J.; Hogue, T.S. Improving spatial soil moisture representation through integration of AMSR-E and MODIS products. *IEEE Trans. Geosci. Remote Sens.* **2012**, *50*, 446–460.
17. Merlin, O.; Rüdiger, C.; Al Bitar, A.; Richaume, P.; Walker, J.; Kerr, Y. Disaggregation of SMOS soil moisture in southeastern Australia. *IEEE Trans. Geosci. Remote Sens.* **2012**, *50*, 1556–1571.
18. Merlin, O.; Escorihuela, M.J.; Mayoral, M.A.; Hagolle, O.; Al Bitar, A.; Kerr, Y. Self-calibrated evaporation-based disaggregation of SMOS soil moisture: an evaluation study at 3 km and 100 m resolution in Catalunya, Spain. *Remote Sens. Environ.* **2013**, *130*, 25–38.
19. Parinussa, R.; Yilmaz, M.; Anderson, M.; Hain, C.; de Jeu, R. An intercomparison of remotely sensed soil moisture products at various spatial scales over the Iberian Peninsula. *Hydrol. Process* **2013**, *130*, doi:10.1002/hyp.9975.
20. Piles, M.; Camps, A.; Vall-llossera, M.; Corbella, I.; Panciera, R.; Rüdiger, C.; Kerr, Y.H.; Walker, J.P. Downscaling SMOS-derived soil moisture using MODIS visible/infrared data. *IEEE Trans. Geosci. Remote Sens.* **2011**, *49*, 3156–3165.
21. Sánchez-Ruiz, S.; Piles, M.; N. Sánchez, J.M.; Vall-llossera, M.; Camps, A. Combining SMOS with visible and near/shortwave/thermal infrared satellite data for high resolution soil moisture estimates. *J. Hydrol.* **2014**, *516*, 273–283.
22. Shin, Y.; Mohanty, B.P. Development of a deterministic downscaling algorithm for remote sensing soil moisture footprint using soil and vegetation classifications. *Water Resour. Res.* **2013**, *49*, 6208–6228.
23. Song, C.; Jia, L.; Menenti, M. Retrieving high-resolution surface soil moisture by downscaling AMSR-E brightness temperature using MODIS LST and NDVI data. *IEEE J. Select Top. Appl. Earth Obs. Remote Sens.* **2014**, *7*, 935–942.
24. Srivastava, P.K.; Han, D.; Rico-Ramirez, M.A.; Al-Shrafany, D.; Islam, T. Data fusion techniques for improving soil moisture deficit using SMOS satellite and WRF-NOAH land surface model. *Water Resour. Manag.* **2013**, *27*, 5069–5087.
25. Srivastava, P.K.; Han, D.; Ramirez, M.R.; Islam, T. Machine learning techniques for downscaling SMOS satellite soil moisture using MODIS land surface Temperature for Hydrological Application. *Water Resour. Manag.* **2013**, *27*, 3127–3144.
26. Zhao, W.; Li, A. A downscaling method for improving the spatial resolution of AMSR-E derived soil moisture product based on MSG-SEVIRI data. *Remote Sens.* **2013**, *5*, 6790–6811.
27. Merlin, O.; Jacob, F.; Wigneron, J.P.; Walker, J.; Chehbouni, G. Multi-dimensional disaggregation of land surface temperature using high-resolution red, near-infrared, shortwave-infrared and microwave-L bands. *IEEE Trans. Geosci. Remote Sens.* **2012**, *50*, 1864–1880.
28. Agam, N.; Kustas, W.P.; Anderson, M.C.; Li, F.; Neale, C.M.U. A vegetation index based technique for spatial sharpening of thermal imagery. *Remote Sens. Environ.* **2007**, *107*, 545–558.
29. Bindhu, V.; Narasimhan, B.; Sudheer, K. Development and verification of a non-linear disaggregation method (NL-DisTrad) to downscale MODIS land surface temperature to the spatial scale of Landsat thermal data to estimate evapotranspiration. *Remote Sens. Environ.* **2013**, *135*, 118–129.

30. Mechri, R.; Ottlé, C.; Pannekoucke, O.; Kallel, A. Genetic particle filter application to land surface temperature downscaling. *J. Geophys. Res.: Atmos.* **2014**, *119*, 2131–2146, doi:10.1002/2013JD020354.
31. Merlin, O.; Duchemin, B.; Hagolle, O.; Jacob, F.; Coudert, B.; Chehbouni, G.; Dedieu, G.; Garatuza, J.; Kerr, Y. Disaggregation of MODIS surface temperature over an agricultural area using a time series of Formosat-2 Images. *Remote Sens. Environ.* **2010**, *114*, 2500–2512, doi:10.1016/j.rse.2010.05.025.
32. Zhan, W.; Chen, Y.; Zhou, J.; Wang, J.; Liu, W.; Voogt, J.; Zhu, X.; Quan, J.; Li, J. Disaggregation of remotely sensed land surface temperature: Literature survey, taxonomy, issues, and caveats. *Remote Sens. Environ.* **2013**, *131*, 119–139, doi:10.1016/j.rse.2012.12.014.
33. Merlin, O.; Walker, J.P.; Kalma, J.D.; Kim, E.J.; Hacker, J.; Panciera, R.; Young, R.; Summerell, G.; Hornbuckle, J.; Hafeez, M.; Jackson, T.J. The NAFE'06 data set: towards soil moisture retrieval at intermediate resolution. *Adv. Water Resour.* **2008**, *31*, 1444–1455.
34. Peischl, S.; Walker, J.P.; Rüdiger, C.; Ye, N.; Kerr, Y.H.; Kim, E.; Bandara, R.; Allahmoradi, M. The AACES field experiments: SMOS calibration and validation across the Murrumbidgee River catchment. *Hydrol. Earth Syst. Sci.* **2012**, *16*, 1697–1708.
35. Duchemin, B.; Hadria, R.; Er-Raki, S.; Boulet, G.; Maisongrande, P.; Chehbouni, A.; Escadafal, R.; Ezzahar, J.; Hoedjes, J.; Kharrou, M.; *et al.* Monitoring wheat phenology and irrigation in central Morocco: on the use of relationships between evapotranspiration, crops coefficients, leaf area index and remotely-sensed vegetation indices. *Agr. Water Manag.* **2006**, *79*, 1–27.
36. Er-Raki, S.; Chehbouni, A.; Guemouria, N.; Duchemin, B.; Ezzahar, J.; Hadria, R. Combining FAO-56 model and ground-based remote sensing to estimate water consumptions of wheat crops in a semi-arid region. *Agr. Water Manag.* **2007**, *87*, 41–54.
37. Chehbouni, A.; Escadafal, R.; Duchemin, B.; Boulet, G.; Simonneaux, V.; Dedieu, G.; Mougenot, B.; Khabba, S.; Kharrou, H.; Maisongrande, P.; *et al.* An integrated modelling and remote sensing approach for hydrological study in arid and semi-arid regions: the SUDMED Programme. *Int. J. Remote Sens.* **2008**, *29*, 5161–5181.
38. Khabba, S.; Jarlan, L.; Er-Raki, S.; Page, M.L.; Ezzahar, J.; Boulet, G.; Simonneaux, V.; Kharrou, M.H.; Hanich, L.; Chehbouni, G. The SudMed program and the Joint International Laboratory TREMA: A decade of water transfer study in the Soil-Plant-Atmosphere system over irrigated crops in semi-arid area. *Proced. Environ. Sci.* **2013**, *19*, 524–533.
39. Hassan, Q.K.; Bourque, C.P.A.; Meng, F.R.; Cox, R.M. A wetness index using terrain-corrected surface temperature and Normalized Difference Vegetation Index derived from standard MODIS products: an evaluation of its use in a humid forest-dominated region of eastern Canada. *Sensors* **2007**, *7*, 2028–2048.
40. Hais, M.; Kucerab, T. The influence of topography on the forest surface temperature retrieved from Landsat TM, ETM + and ASTER thermal channels. *ISPRS J. Photogramm. Remote Sens.* **2009**, *64*, 585–591.

41. Van doninck, J.; Peters, J.; de Baets, B.; de Clercq, E.M.; Ducheyne, E.; Verhoest, N.E.C. Influence of topographic normalization on the vegetation index-surface temperature relationship. *J. Appl. Remote Sens.* **2012**, *6*, doi:10.1117/1.JRS.6.063518.
42. Allen, R.G.; Pereira, L.S.; Raes, D.; Smith, M. *Crop Evapotranspiration—Guidelines for Computing Crop Water Requirements*; FAO Irrigation and Drainage Paper 56; FAO: Rome, Italy, 1998.
43. Brisson, N.; Perrier, A. A semiempirical model of bare soil evaporation for crop simulation models. *Water Resour. Res.* **1991**, *7*, 719–727.
44. Cosby, B.J.; Hornberger, G.M.; Clapp, R.B.; Ginn, T.R. A statistical exploration of the relationships of soil moisture characteristics to the physical properties of soils. *Water Resour. Res.* **1984**, *20*, doi:10.1029/WR020i006p00682.
45. Kerr, Y.; Jacques, E.; al Bitar, A.; Cabot, F.; Mialon, A.; Richaume, P.; Quesney, A.; Berthon, L. *CATDS SMOS L3 Soil Moisture Retrieval Processor: Algorithm Theoretical Baseline Document (ATBD)*; CESBIO: Toulouse, France, 2013.
46. Berthon, L.; Mialon, A.; Cabot, F.; al Bitar, A.; Richaume, P.; Kerr, Y.; Leroux, D.; Bircher, S.; Lawrence, H.; Quesney, A.; *et al.* *CATDS Level 3 Data Product Description—Soil Moisture and Brightness Temperature Part*; CESBIO: Toulouse, France, 2012.
47. Malbêteau, Y.; Merlin, O.; Molero, B.; Rüdiger, C.; Bacon, S. DISPATCH as a tool for improving validation strategies of coarse-scale remotely sensed soil moisture: Application to SMOS and AMSR-E data in Southeastern Australia. *Int. J. Appl. Earth Obs. GeoInf.* **2015**. submitted.
48. Budyko, M.I. *Heat Balance of the Earth's Surface*; Gidrometeoizdat: Leningrad, Russia, 1956; p. 255.
49. Reichle, R.H.; Koster, R.D.; Liu, P.; Mahanama, S.P.P.; Njoku, E.G.; Owe, M. Comparison and assimilation of global soil moisture retrievals from the Advanced Microwave Scanning Radiometer for the Earth Observing System (AMSR-E) and the Scanning Multichannel Microwave Radiometer (SMMR). *J. Geophys. Res.* **2007**, *112*, doi:10.1029/2006JD008033.
50. Long, D.; Scanlon, B.R.; Longuevergne, L.; Sun, A.Y.; Fernando, D.N.; Himanshu, S. GRACE satellite monitoring of large depletion in water storage in response to the 2011 drought in Texas. *Geophys. Res. Lett.* **2013**, *40*, 3395–3401.
51. Long, D.; Longuevergne, L.; Scanlon, B.R. Uncertainty in evapotranspiration from land surface modeling, remote sensing, and GRACE satellites. *Water Resour. Res.* **2014**, *50*, 1131–1151, doi:10.1002/2013WR014581.
52. Xia, Y.; Mitchell, K.; Ek, M.; Sheffield, J.; Cosgrove, B.; Wood, E.; Luo, L.; Alonge, C.; Wei, H.; Meng, J.; *et al.* Continental-scale water and energy flux analysis and validation for the North American Land Data Assimilation System project phase 2 (NLDAS-2): 1. Intercomparison and application of model products. *J. Geophys. Res.: Atmos.* **2012**, *117*, doi:10.1029/2011JD016048.
53. Xia, Y.; Mitchell, K.; Ek, M.; Cosgrove, B.; Sheffield, J.; Luo, L.; Alonge, C.; Wei, H.; Meng, J.; Livneh, B.; *et al.* Continental-scale water and energy flux analysis and validation for North American Land Data Assimilation System project phase 2 (NLDAS-2): 2. Validation of model-simulated streamflow. *J. Geophys. Res.: Atmos.* **2012**, *117*, doi:10.1029/2011JD016051.

54. Sabater, J.M.; Jarlan, L.; Calvet, J.C.; Bouyssel, F.; de Rosnay, P. From near-surface to root-zone soil moisture using different assimilation techniques. *J. Hydrometeor.* **2007**, *8*, 194–206. doi:10.1175/JHM571.1.
55. Merlin, O.; Chehbouni, G.; Boulet, G.; Kerr, Y. Assimilation of disaggregated microwave soil moisture into a hydrologic model using coarse-scale meteorological data. *J. Hydrometeor.* **2006**, *7*, 1308–1322.
56. Bandara, R.; Walker, J.P.; Rüdiger, C.; Merlin, O. Towards soil property retrieval from space: An application with disaggregated satellite observations. *J. Hydrol.* **2015**, doi:10.1016/j.jhydrol.2015.01.018.

© 2015 by the authors; licensee MDPI, Basel, Switzerland. This article is an open access article distributed under the terms and conditions of the Creative Commons Attribution license (<http://creativecommons.org/licenses/by/4.0/>).