

Supplementary Information

**Quantitatively assessing ecological stress of urbanization to natural
ecosystems by using Landscape Adjacency Index**

Meixia Lin et al.

The following supplementary figures (Fig.S1-S6) describe the grading maps of V_i at 5km-grid scale for cultivated land, woodland, waterbodies, wetland, grassland, and unused land, respectively. The white grid in the figures means that there is no common edge between urban landscape and the focal natural landscape within this study unit. The red grid represents a high grading of V_i , and the blue grid represents a low grading of V_i . Fig.7s illustrates the percent of the grid number of different LV grading in the total grid number of YRD from 1990 to 2015. Fig.8s illustrates Land use and land cover change in YRD from 1990 to 2015.

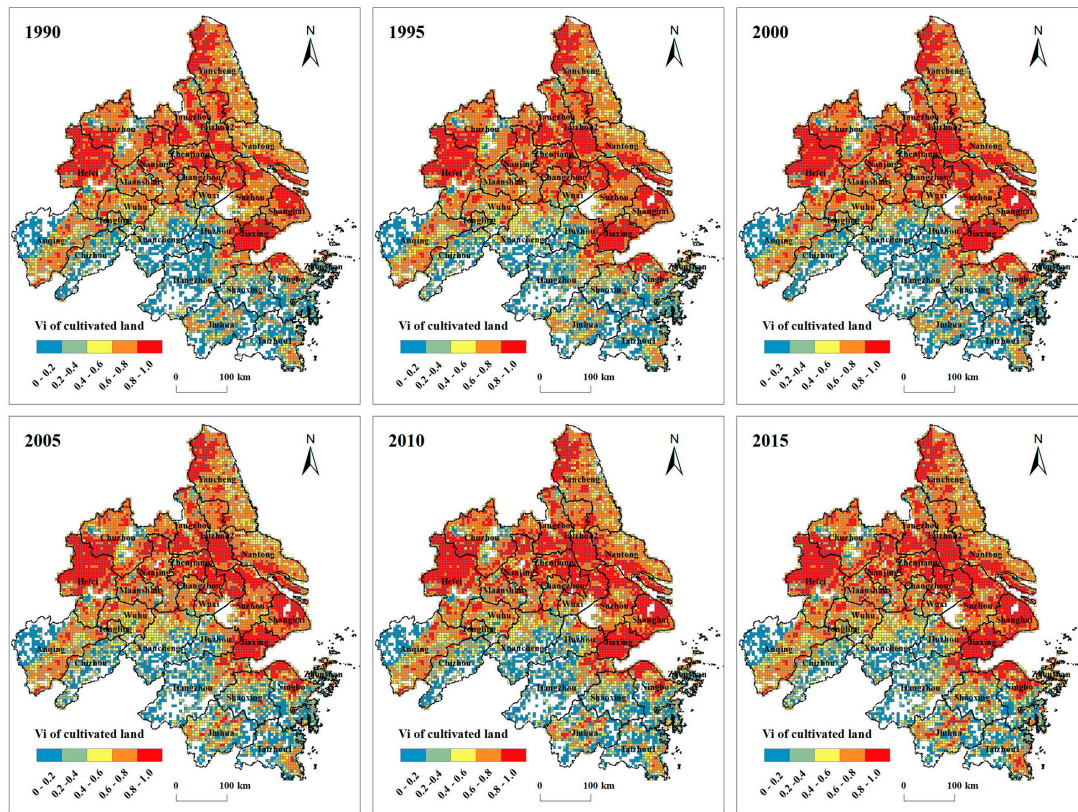


Fig.S1 The spatial variation of V_i at 5km-grid scale for cultivated land in YRD from 1990 to 2015

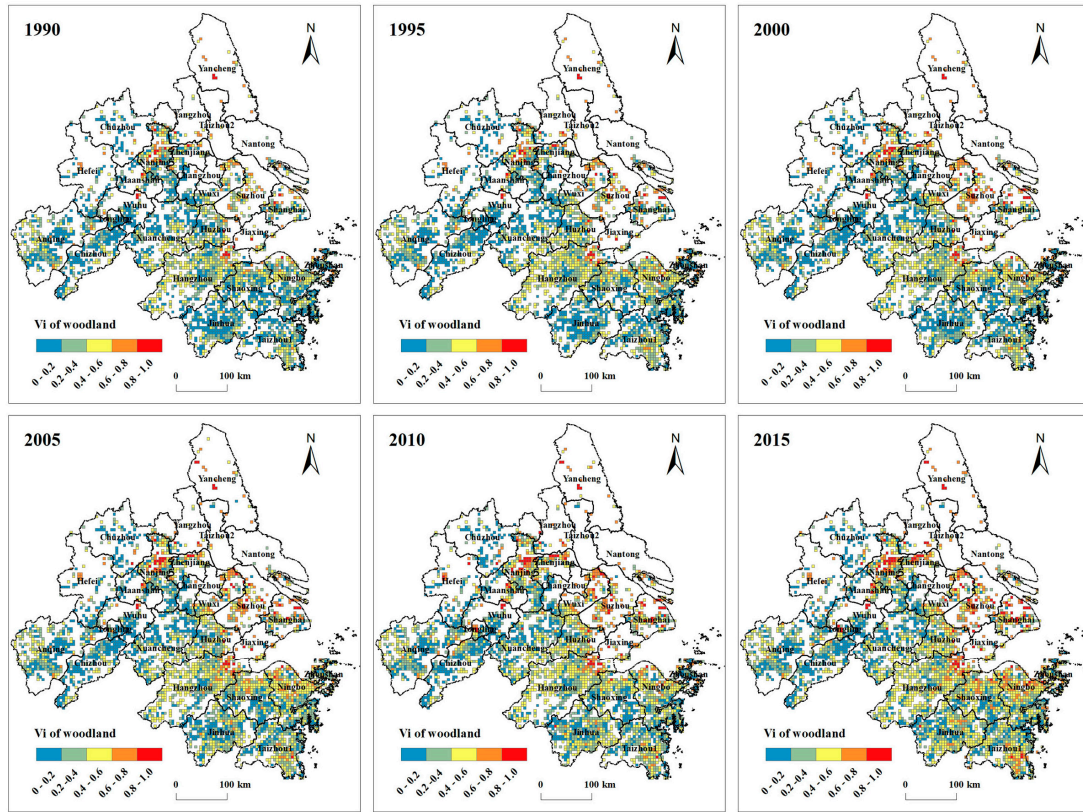


Fig.S2 The spatial variation of V_i at 5km-grid scale for woodland in YRD from 1990 to 2015.

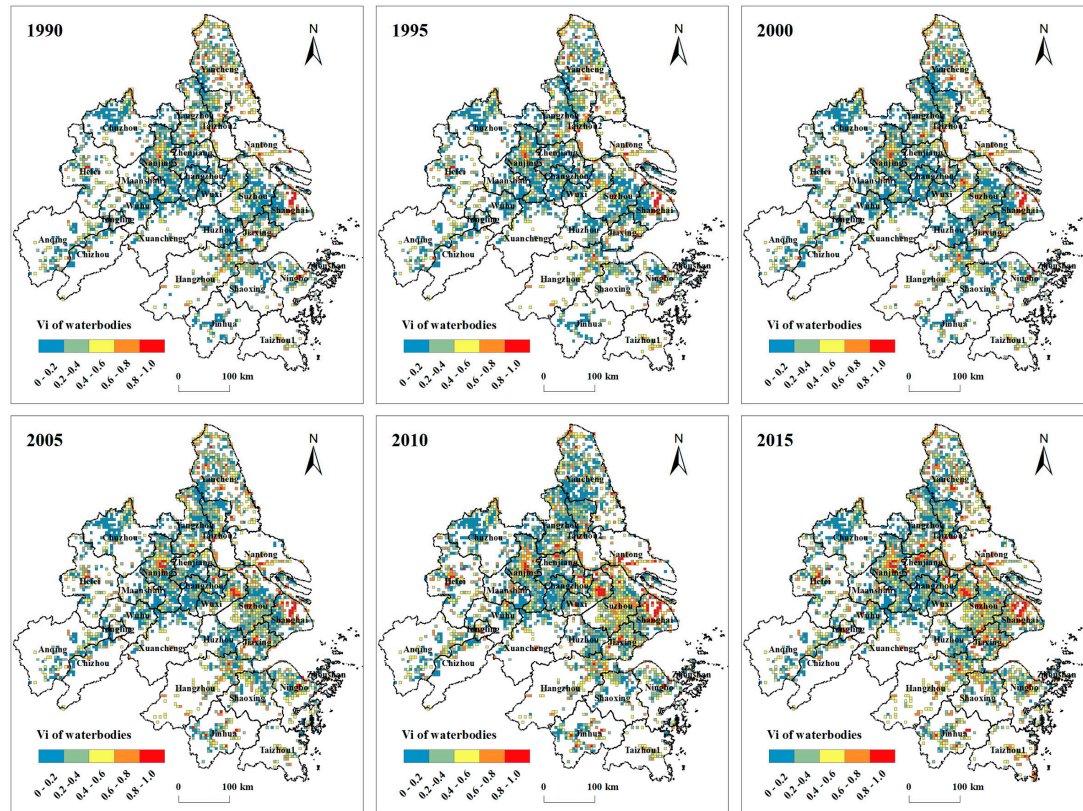


Fig.S3 The spatial variation of V_i at 5km-grid scale for waterbodies in YRD from 1990 to 2015

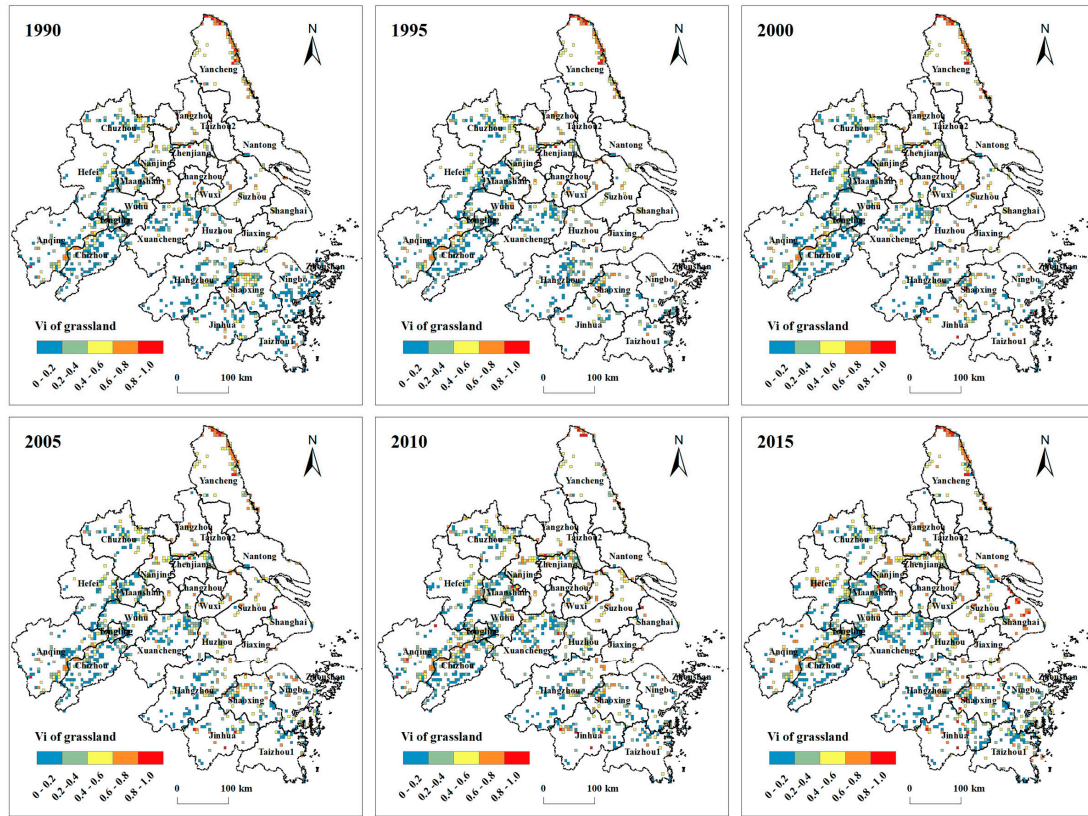


Fig.S4 The spatial variation of V_i at 5km-grid scale for grassland in YRD from 1990 to 2015.

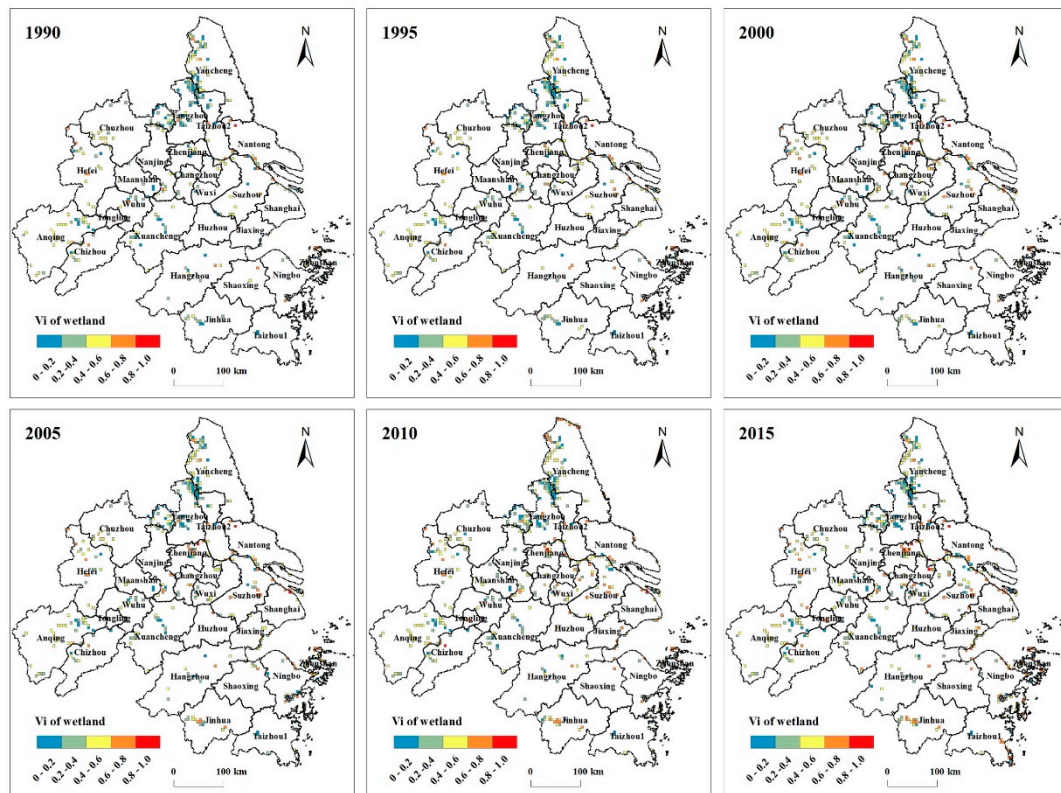


Fig.S5 The spatial variation of V_i at 5km-grid scale for wetland in YRD from 1990 to 2015.

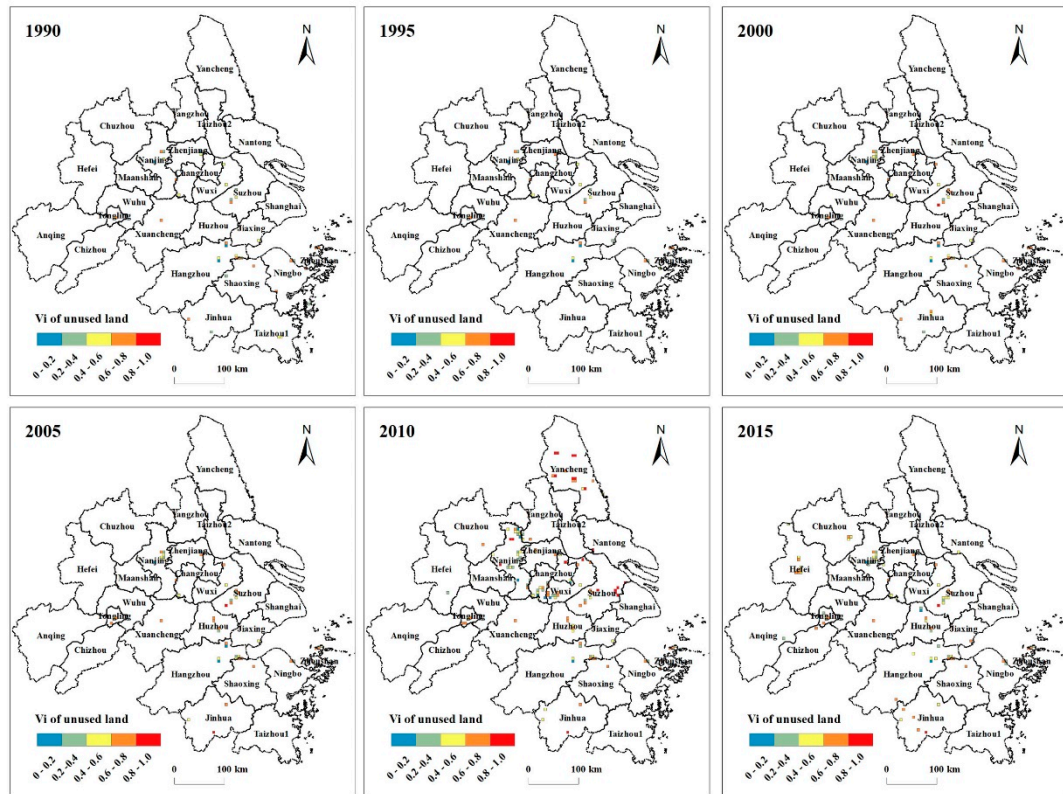


Fig.S6 The spatial variation of V_i at 5km-grid scale for unused land in YRD from 1990 to 2015.

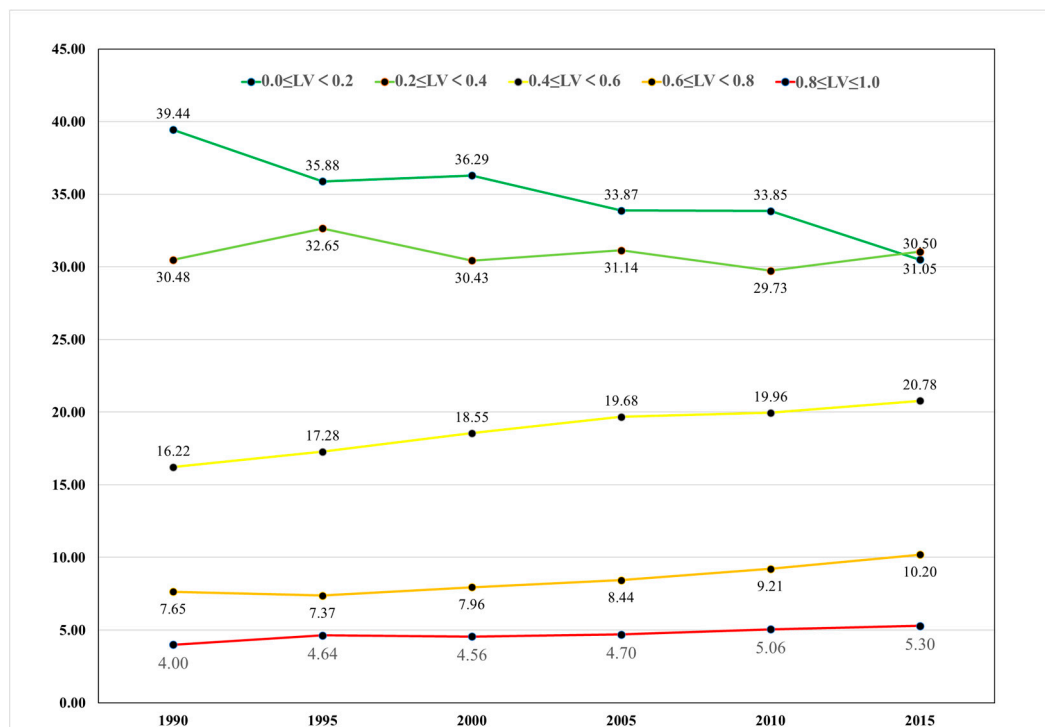


Fig.S7 The percent of the grid number of different LV grading in the total grid number of YRD from 1990 to 2015.

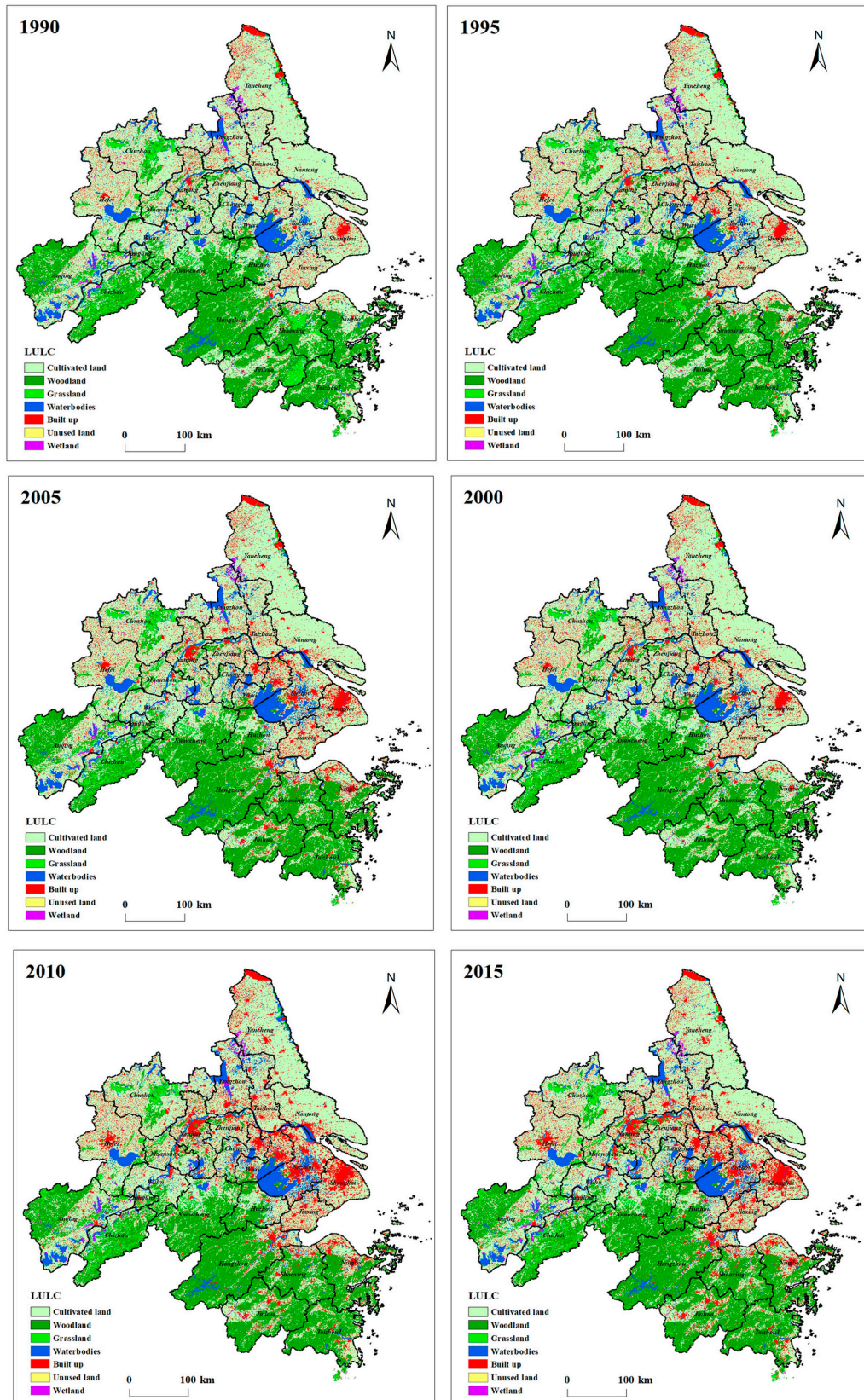


Fig.S8 Land use and land cover change in YRD from 1990 to 2015.