

Crop litter has a strong effect on soil organic matter sequestration in semi-arid environments

N. V. Paranychianakis¹, G. Giannakis¹, D. Moraetis², V.A. Tzanakakis³, N. P. Nikolaidis¹

Supplementary Material

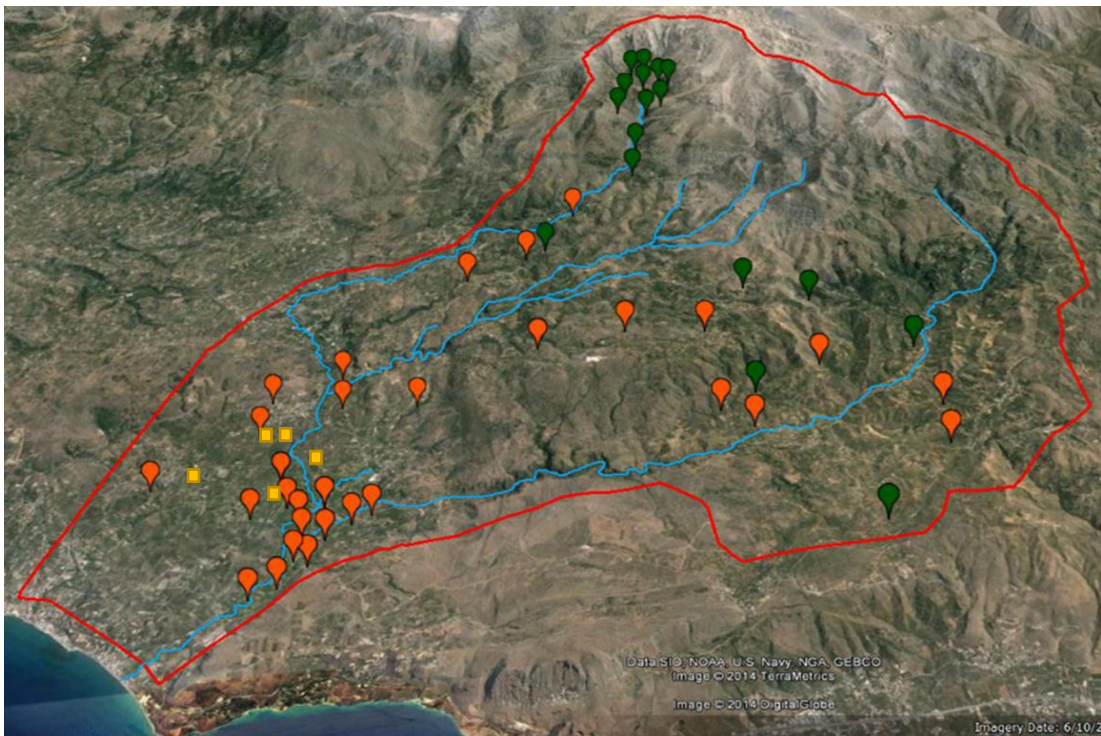


Figure S1: Map of the sampling Sites (1 to 5) locations in the Koiliaris CZO. The location of sites, yellow squares, appears in the map of CZO that also includes the earlier sampling of agricultural (orange bubbles) and natural (green bubbles) sites (Tsiknia et al., 2015).

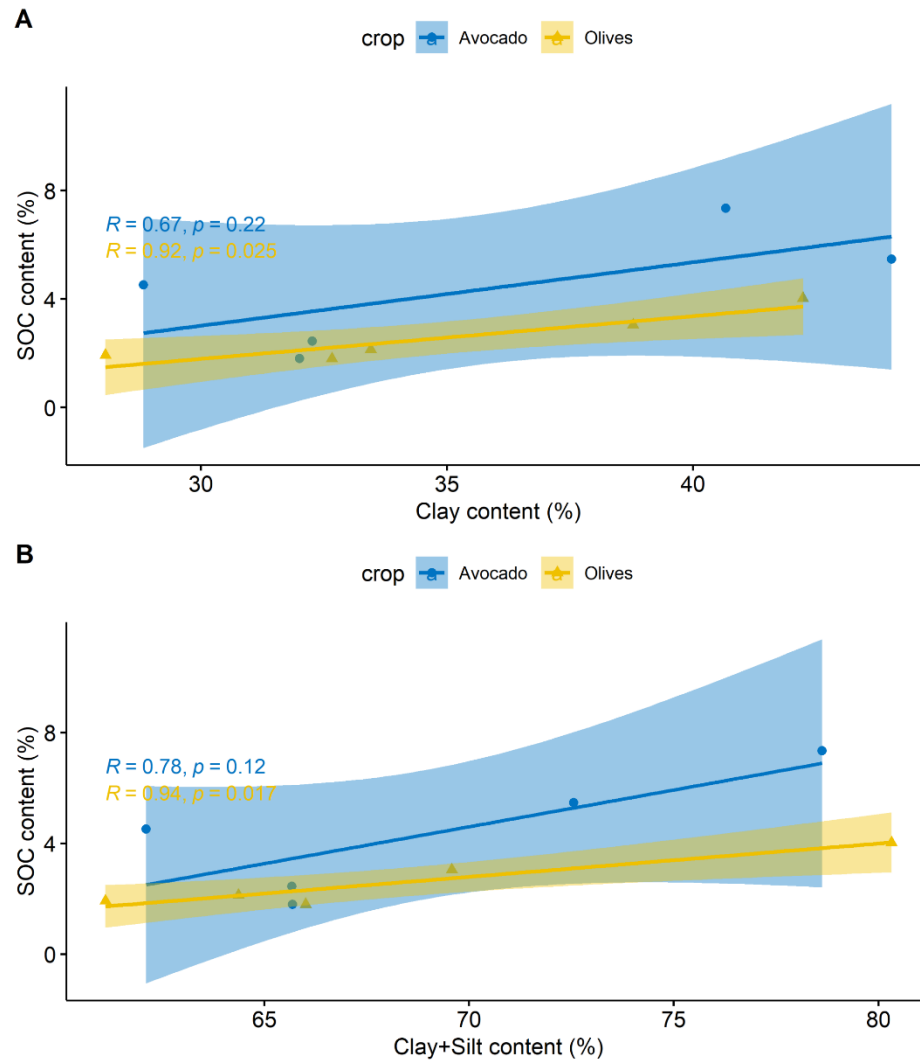


Figure S2: Relationships between clay (A) and clay plus silt content (B) and SOC for avocado and olive trees.

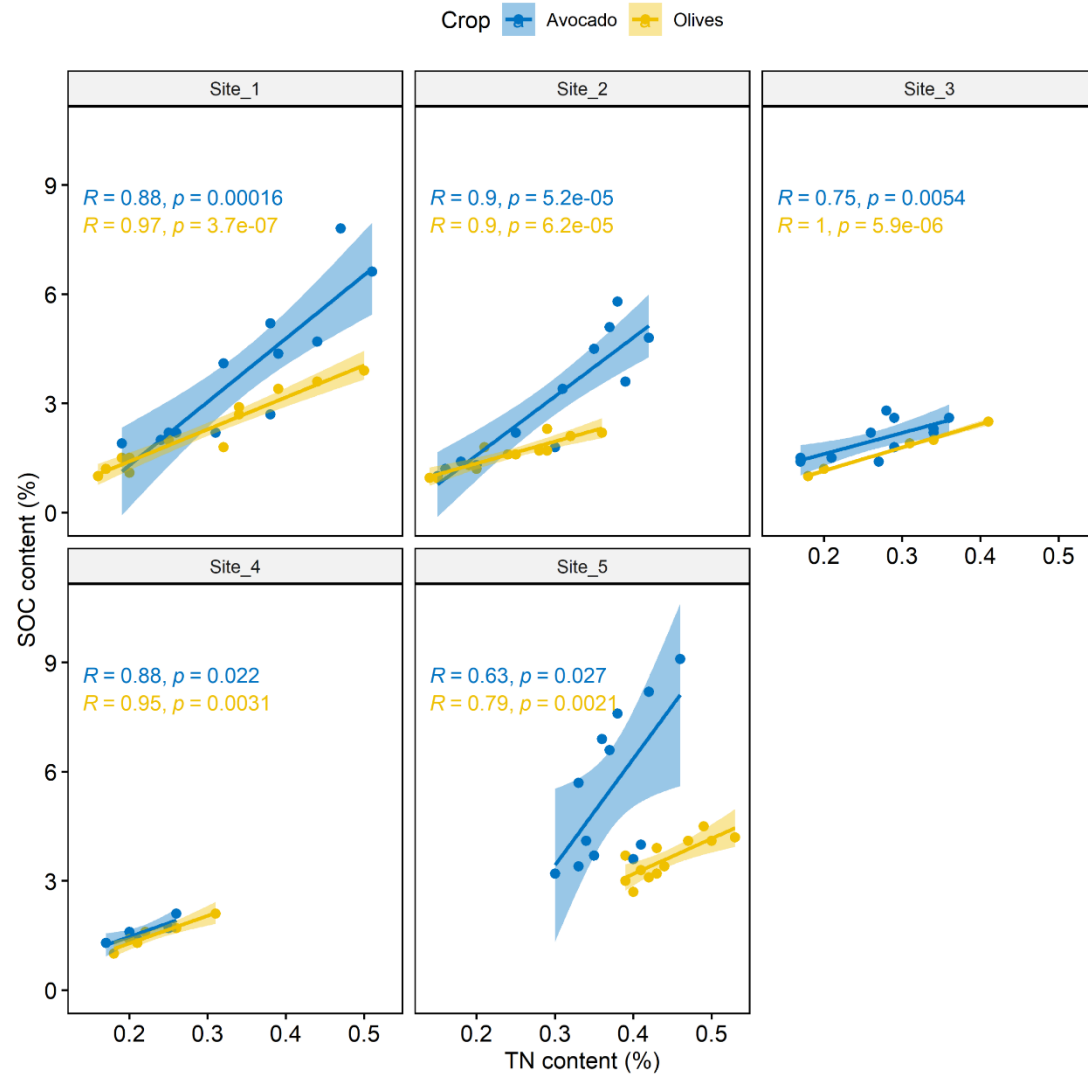


Figure S3: Relationships between SOC and TN in the different sampling sites.