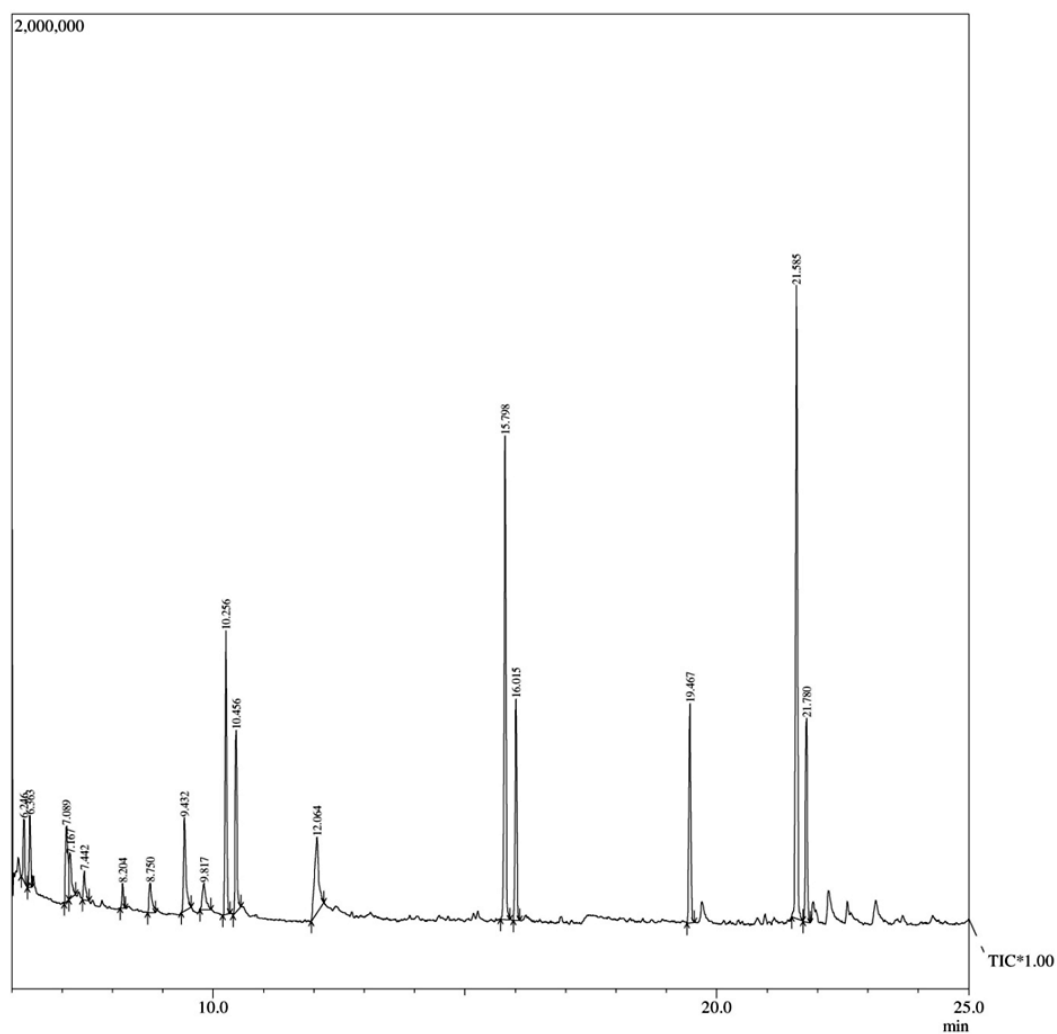
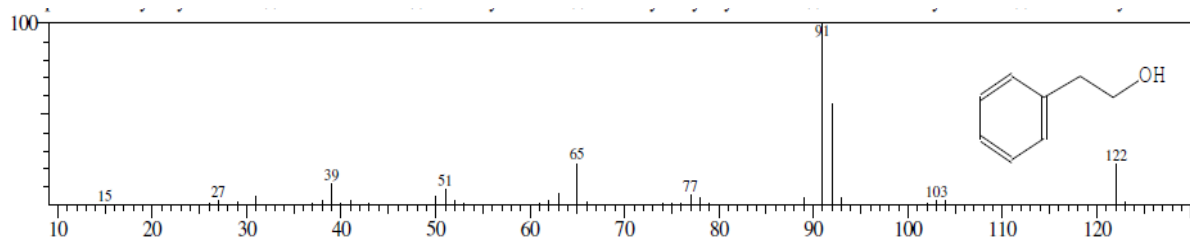


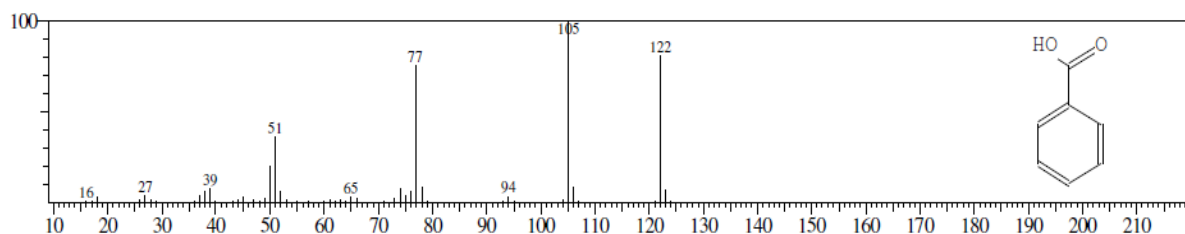
**Supplementary Figure S 1:** Thin layer chromatography of 32 fractions of ethyl acetate extracts of *P. lilacinum* 6029 pooled into five fractions. The solvent system used for development is CHCl<sub>3</sub>: MeOH = 8:1.



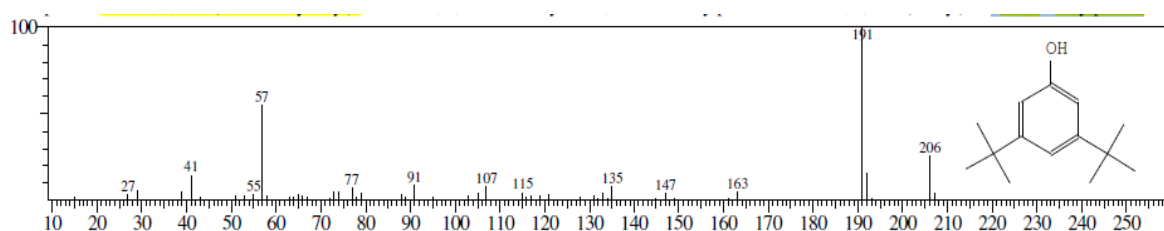
**Supplementary Figure S2:** GC spectra of ethyl acetate fraction, Fr 14-15, of *P. lilacinum* culture filtrate.



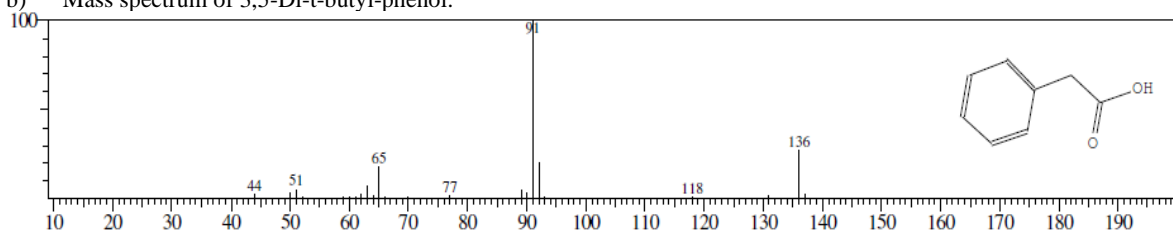
MS spectrum of phenyl ethyl alcohol.



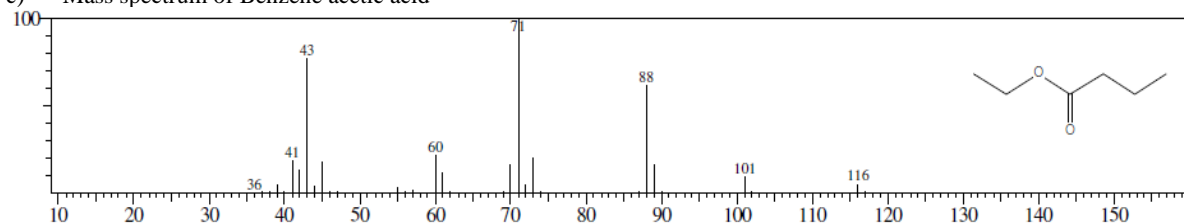
a) MS spectrum of benzoic acid



b) Mass spectrum of 3,5-Di-t-butyl-phenol.



c) Mass spectrum of Benzene acetic acid



d) Mass spectrum of 2-ethyl butyric acid

**Supplementary Figure S3: Mass spectra of 5 major compounds identified in the fraction, Fr 14-15.**

- a) MS spectrum of phenyl ethyl alcohol b) MS spectrum of benzoic acid.  
 b) Mass spectrum of 3,5-Di-t-butyl-phenol c) Mass spectrum of Benzene acetic acid.  
 c) Mass spectrum of 2-ethyl butyric acid