

Supplementary Materials

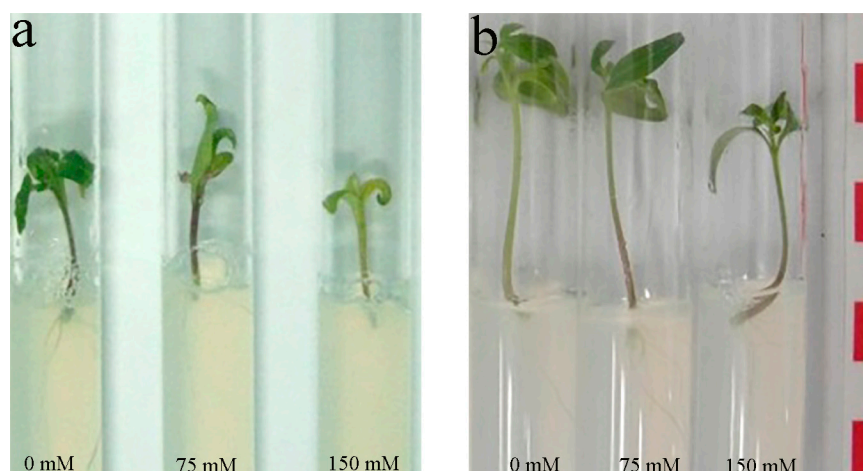


Figure S1. Seedlings of tomato line YaLF (a) cv. Recordsman (b) in vitro on Murashige-Skoog medium with different concentrations of NaCl.

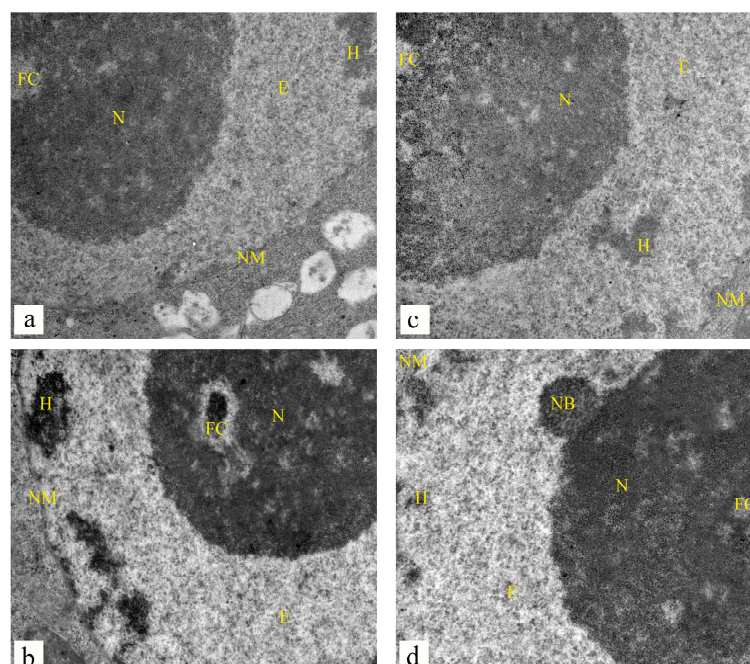


Figure S2. (addition to the Figure 7). Nucleus ultrastructural organization in the cells of the primary root cortex of the YaLF line (A — control, C — 150 mM NaCl) and cv Recordsmen (B — control, D — 150 mM NaCl) in vitro in photographs obtained by TEM. Abbreviations: H — heterochromatin, FC — fibrillar center, E — euchromatin, N — nucleolus, NB — nuclear body, NM — nuclear membrane, * — electron-transparent region around the nucleolus.