

# Design, Development, and Evaluation of Constant Voltage Iontophoresis for the Transungual Delivery of Efinaconazole

Anroop B. Nair, Bandar Aldhubiab, Jigar Shah, Shery Jacob, Mahesh Attimarad, Nagaraja Sreeharsha, Katharigatta N. Venugopala, Alex Joseph and Mohamed A. Morsy

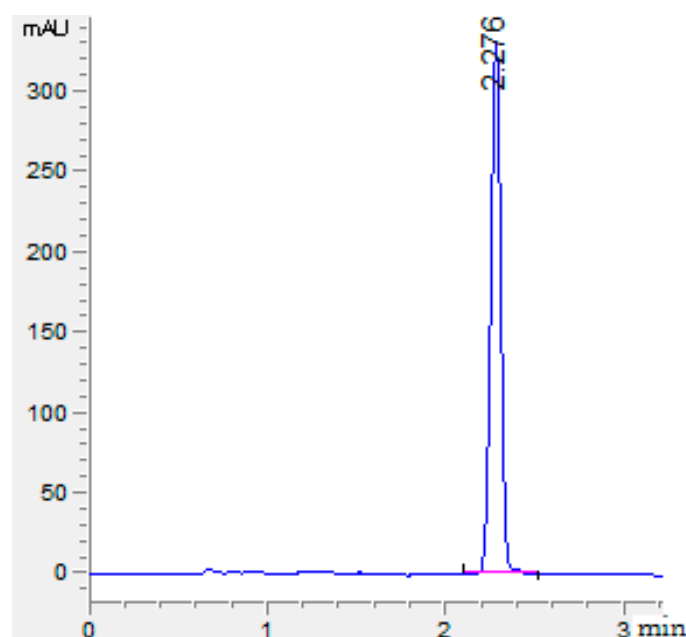


Figure S1. Representative HPLC chromatogram of efinaconazole.

Scaled Estimates					
Nominal factors expanded to all levels					
Term	Scaled Estimate		Std Error	t Ratio	Prob> t
Intercept	49.66827		0.482759	102.88	<.0001*
Voltage range[4.5]	-22.26589		0.703737	-31.64	<.0001*
Voltage range[7.5]	-0.038118		0.638631	-0.06	0.9539
Voltage range[10.5]	22.304007		0.661046	33.74	<.0001*
Solvent:Cosolvent[1:0.5]	-0.509859		0.661046	-0.77	0.4627
Solvent:Cosolvent[1:1]	1.9378624		0.703737	2.75	0.0249*
Solvent:Cosolvent[1.5:1]	-1.428003		0.638631	-2.24	0.0558
Enhancer- PEG400[20]	-3.993007		0.703737	-5.67	0.0005*
Enhancer- PEG400[25]	-0.077471		0.661046	-0.12	0.9096
Enhancer- PEG400[30]	4.0704782		0.638631	6.37	0.0002*

Figure S2. Scaled estimates for drug permeation. \*significant

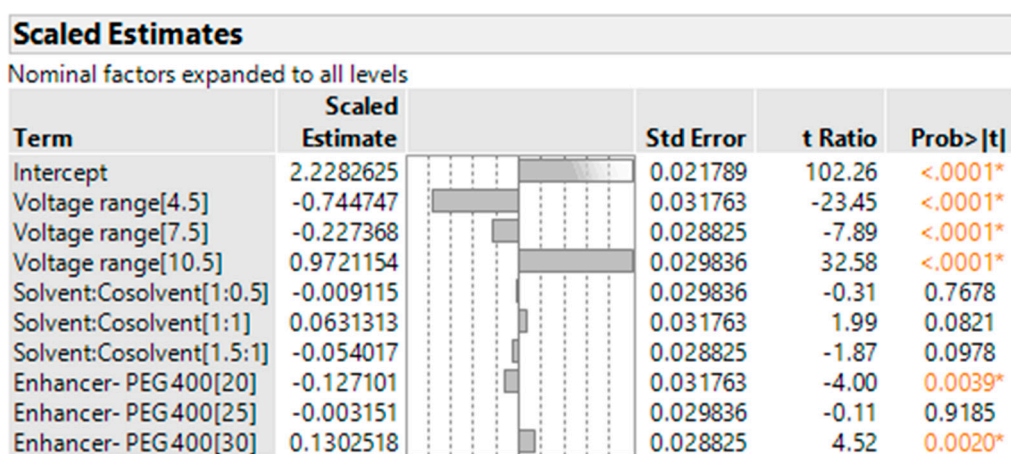


Figure S3. Scaled estimates for drug loading. \*significant