

## **Supplementary Information**

### **Polymeric Nanoparticle BAM15 Targeting Macrophages Attenuates Severity of LPS-Induced Sepsis: A Proof of Concept for Specific Immune Cell-Targeted Therapy**

Kanyarat Udompornpitak<sup>1,2</sup>, Thansita Bhunyakarnjanarat<sup>1,2</sup>, Wilasinee Saisorn<sup>2,3</sup>, Chonnavee Manipuntee<sup>4,5</sup>, Kittawat Plengplang<sup>2</sup>, Samarch Sittichaitaweekul<sup>2</sup>, Panisa Jenphatanapong<sup>2</sup>, Suwasin Udomkarnjananun<sup>6</sup>, Warerat Kaewduangduen<sup>5</sup>, Kasirapat Ariya-anandech<sup>5</sup>, Amanee Samaeng<sup>5</sup>, Numpon Insin<sup>4,5</sup>, Patcharee Ritprajak<sup>5,7,#</sup>, Asada Leelahavanichkul<sup>1,2,#</sup>

<sup>1</sup>Department of Microbiology, Faculty of Medicine, Chulalongkorn University, Bangkok, Thailand

<sup>2</sup>Center of Excellence in Translational Research on Immunology and Immune-mediated Diseases (CETRII), Department of Microbiology, Faculty of Medicine, Bangkok, Thailand

<sup>3</sup>Interdisciplinary Program of Biomedical Sciences, Graduate School, Chulalongkorn University, Bangkok, Thailand

<sup>4</sup>Department of Chemistry, Faculty of Science, Chulalongkorn University, Bangkok, Thailand

<sup>5</sup>Research Unit in Integrative Immuno-Microbial Biochemistry and Bioresponsive Nanomaterials, Department of Microbiology, Faculty of Dentistry, Chulalongkorn University, Bangkok, Thailand.

<sup>6</sup>Division of Nephrology, Department of Medicine, Faculty of Medicine, Chulalongkorn University and King Chulalongkorn Memorial Hospital, Bangkok, Thailand.

<sup>7</sup>Department of Microbiology, Faculty of Dentistry, Chulalongkorn University, Bangkok, Thailand.

### **#Corresponding author**

Asada Leelahavanichkul, MD., Ph.D., Associate Professor

Department of Microbiology, Faculty of Medicine, Chulalongkorn University, Bangkok,  
Thailand

E-mail: aleelahavanit@gmail.com

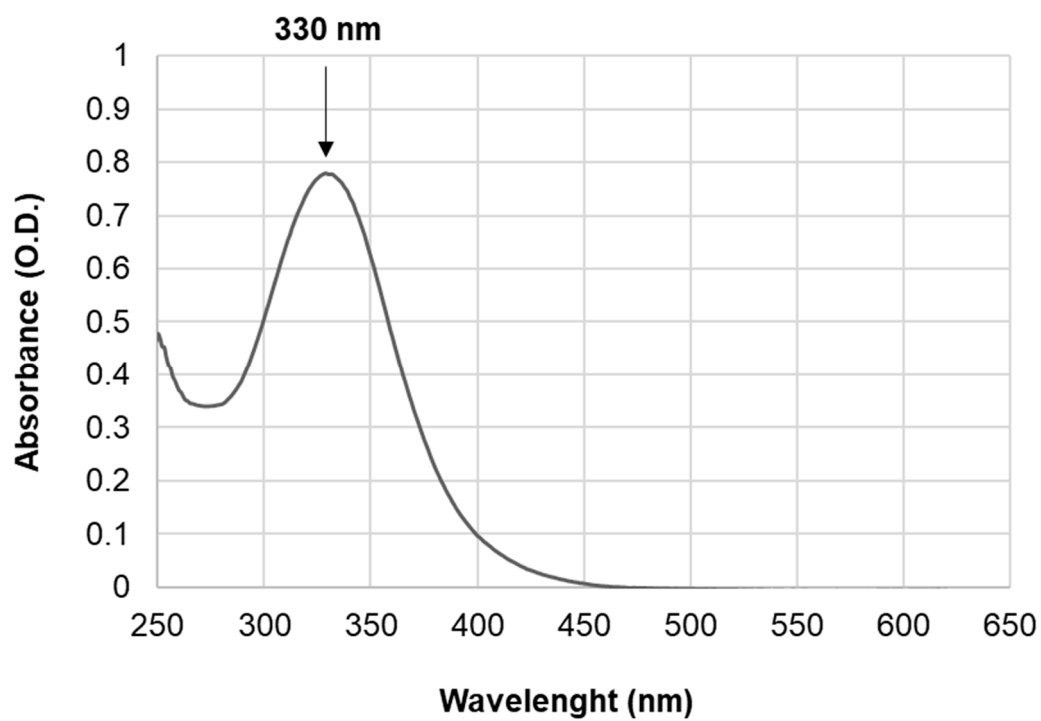
Tel: +66 2 256 4470, Fax: +66 2 252 5952,

Patcharee Ritprajak, DDS., Ph.D., Associate Professor

Department of Microbiology, Faculty of Dentistry, Chulalongkorn University, Pathumwan,  
Bangkok, 10330 Thailand

Email: Patcharee.R@chula.ac.th

Tel: +66-2-2188680



### Supplementary Figure S1 Absorbance of BAM15

BAM15 solution was measured using UV-VIS spectrophotometry. The peak of absorbance was 330 nm.