

## CONTINUOUS AFFINITY PURIFICATION OF ADENO-ASSOCIATED VIRUS USING PERIODIC COUNTER-CURRENT CHROMATOGRAPHY

João P. Mendes<sup>1,2</sup>, Magnus Bergman<sup>3</sup>, Anita Solbrand<sup>3</sup>, Cristina Peixoto<sup>1,2</sup>,  
Manuel J. T. Carrondo<sup>1,2</sup> and Ricardo J. S. Silva<sup>1,2,\*</sup>

<sup>1</sup>iBET, Instituto de Biologia Experimental e Tecnológica, Apartado 12, 2780-901 Oeiras, Portugal

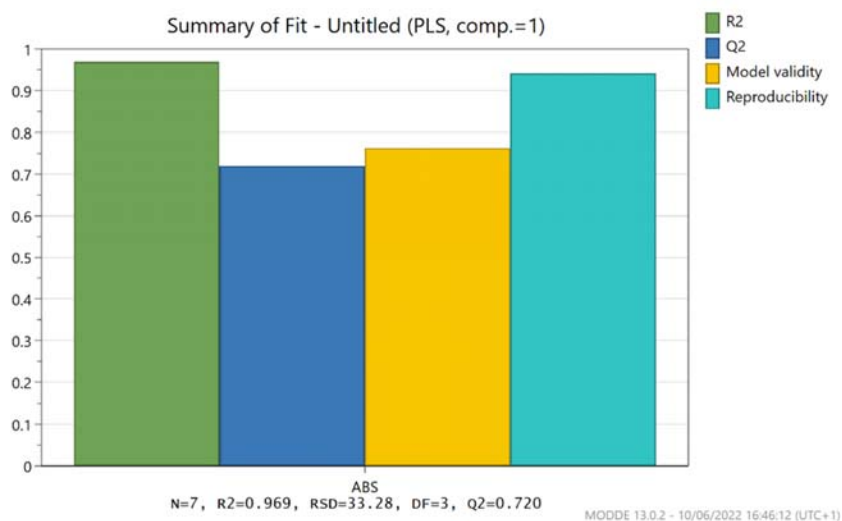
<sup>2</sup>ITQB NOVA, Instituto de Tecnologia Química e Biológica António Xavier, Universidade Nova de Lisboa, Av. da República, 2780-157 Oeiras, Portugal

<sup>3</sup>Cytiva, 751 84 Uppsala, Sweden

**Supplementary Table S1:** Experimental matrix used in the design of experiments reported in Figure 2A.

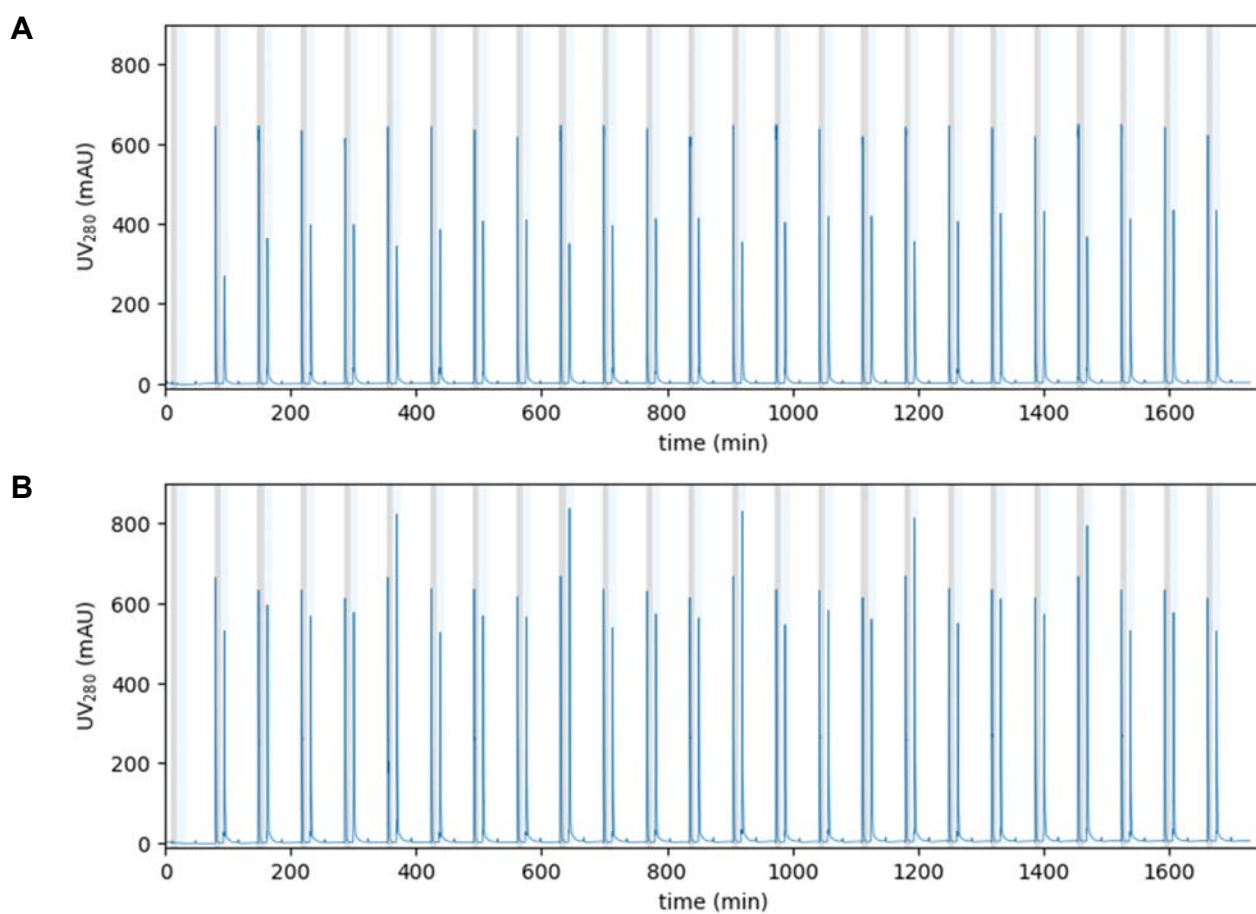
Exp No.	Exp Name	Run Order	[NaCl] mM	[Arginine] mM
1	N1	2	0	0
2	N2	6	500	0
3	N3	1	0	500
4	N4	4	500	500
5	N5	3	250	250
6	N6	5	250	250
7	N7	7	250	250

**Supplementary Figure S1**



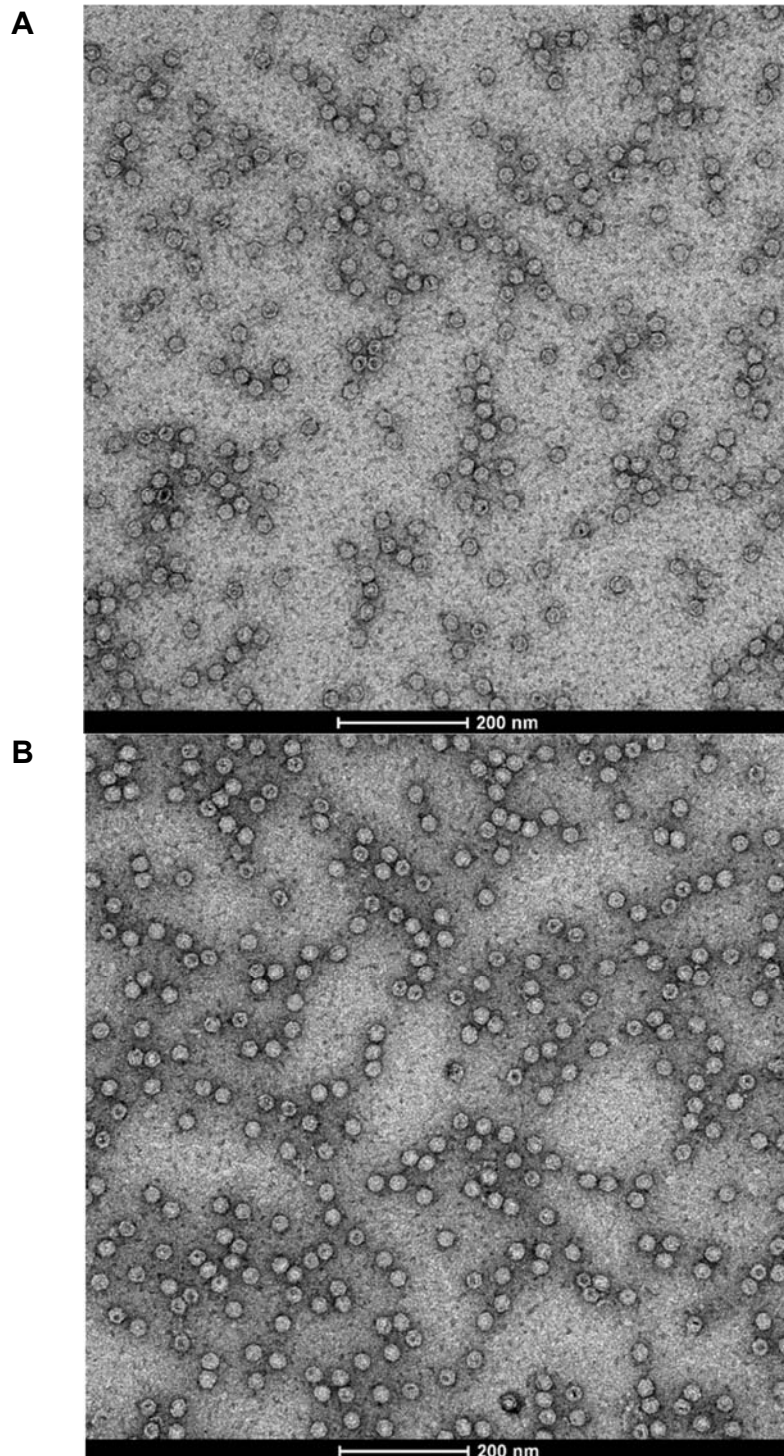
**Supplementary Figure S1:** Summary of fit from DoE reported in Figure 2.

## Supplementary Figure S2



**Supplementary Figure S2:** Chromatograms of PCC runs 1 (A) and 2 (B); UV280 profiles obtained at the outlet of the elution zone over the 6 cycles performed in each run; gray zone marks column wash and light blue elution.

### Supplementary Figure S3



**Supplementary Figure S3:** Uncropped Transmission Electron Microscopy pictures. The figures were used for building Figures 6A and 6B (A and B respectively).