

Supplementary Materials: Smartcrystals for Efficient Dissolution of Poorly Water-Soluble Meloxicam

Rita Ambrus, Areen Alshweiat, Piroska Szabó-Révész, Csilla Bartos and Ildikó Csóka

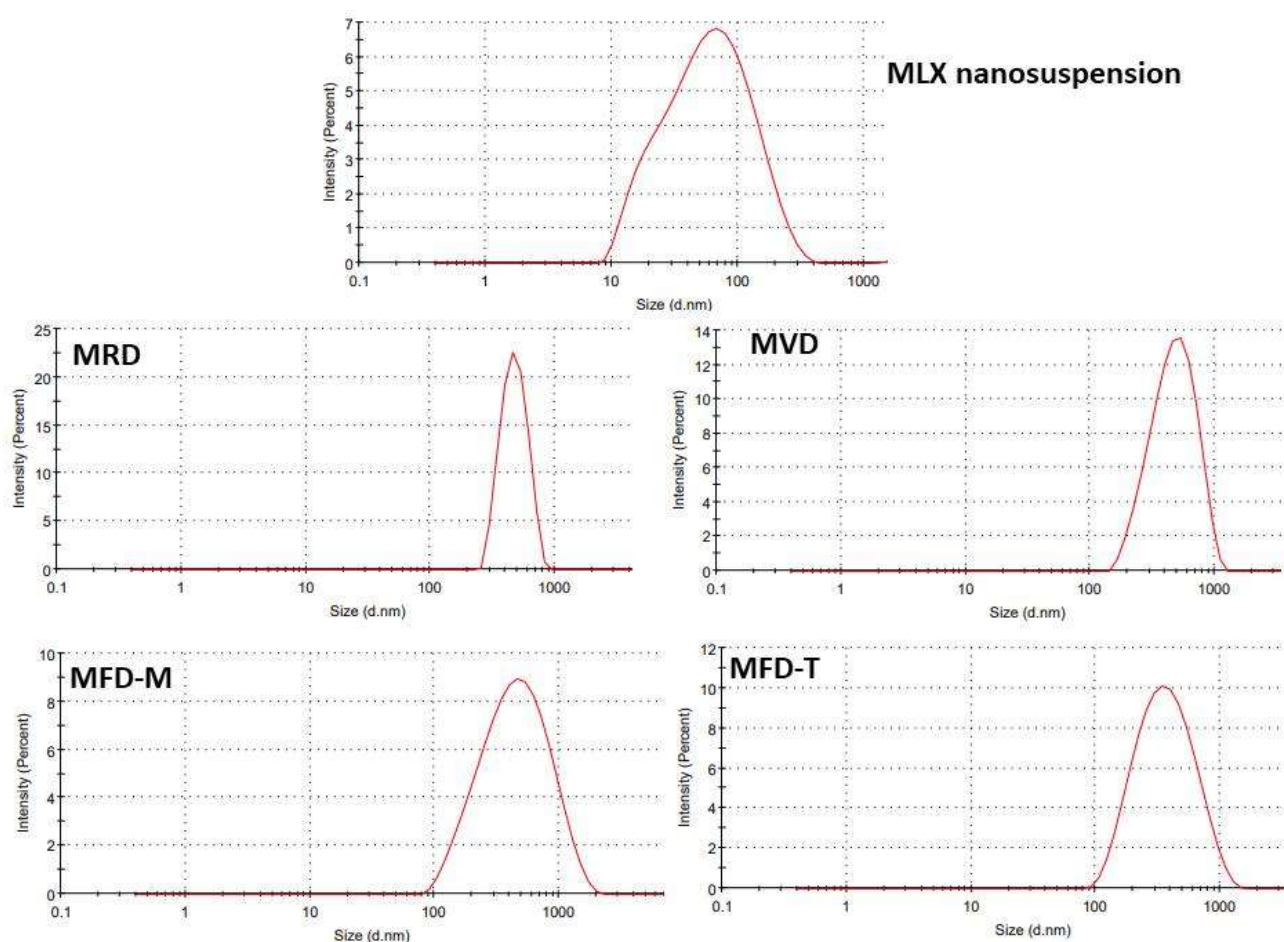
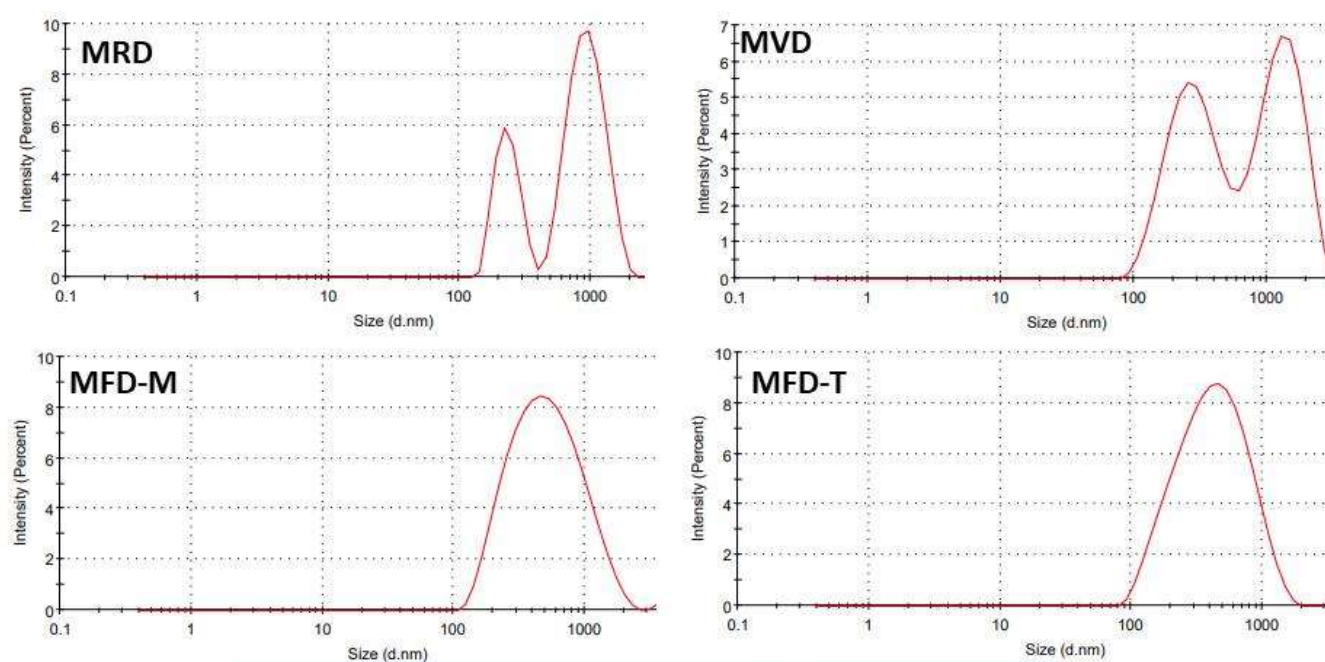


Figure S1. MPS of MLX nanocrystals after redistribution in water.



MPS, ZP and PDI of MLX nanocrystals after redistribution in water (1 month storage)		
Sample	MPS (nm)	ZP
MRD	804.9 ± 32.12	-12.6
MVD	653 ± 17.21	-16.8
MFD-M	445.57 ± 12.56	-18.6
MFD-T	357.42 ± 2.47	-22.9

Figure S2. MPS, ZP and PDI of MLX nanocrystals after redistribution in water (1-month storage).

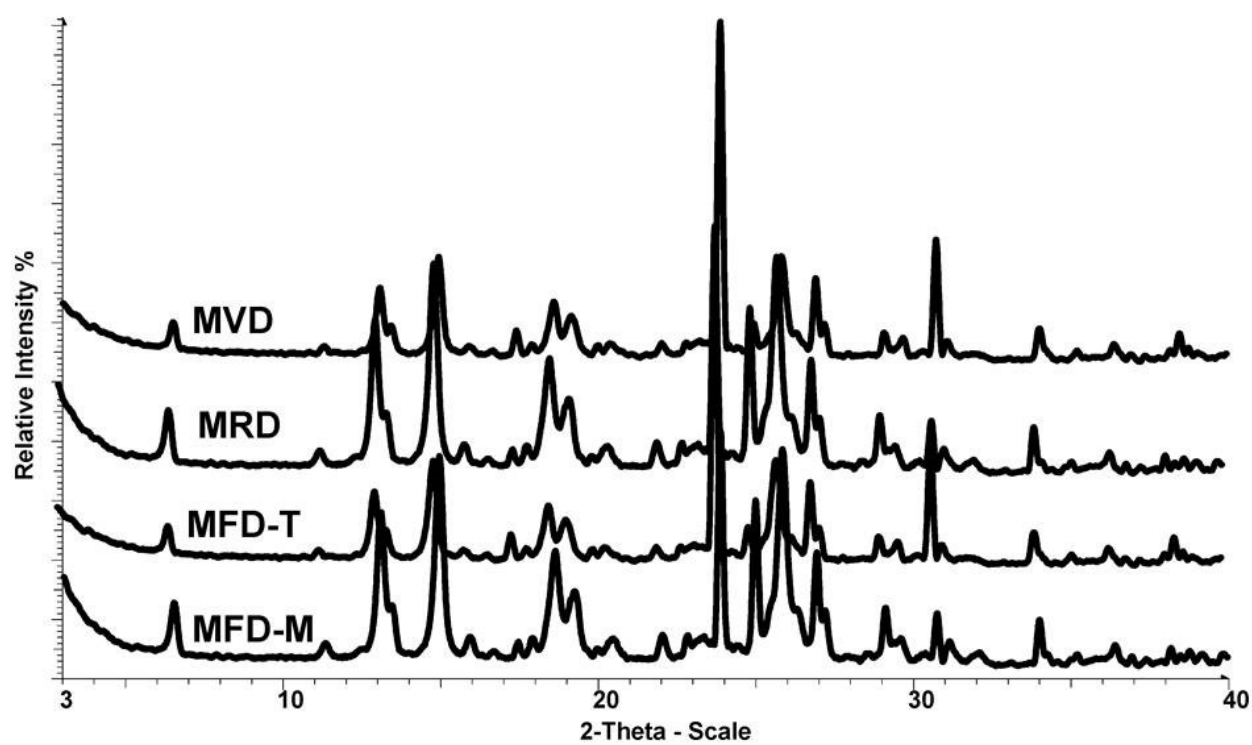


Figure S3. XRPD patterns of the samples after dissolution to recrystallized the samples from the media.