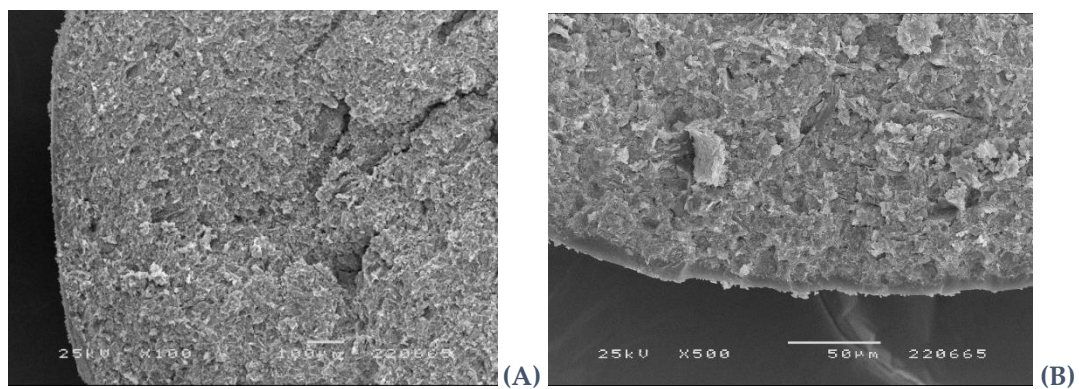


**Figure S1.** Diffractograms of samples obtained from placebo formulations (A), and formulations containing olanzapine (B) or olanzapine:saccharin in the crystalline (C) or the co-amorphous (D) form, as starting materials. Colors reflect the nature of samples: physical mixture (blue), extrudate (orange), pellets (yellow) and pellets coated with olanzapine or olanzapine and saccharin (green).



**Figure S2.** Scanning electron microphotographs of the cross sectional area of pellets containing olanzapine (formulation I, **A**) or olanzapine and saccharin (formulation II, **B**) on the surface of the bead.