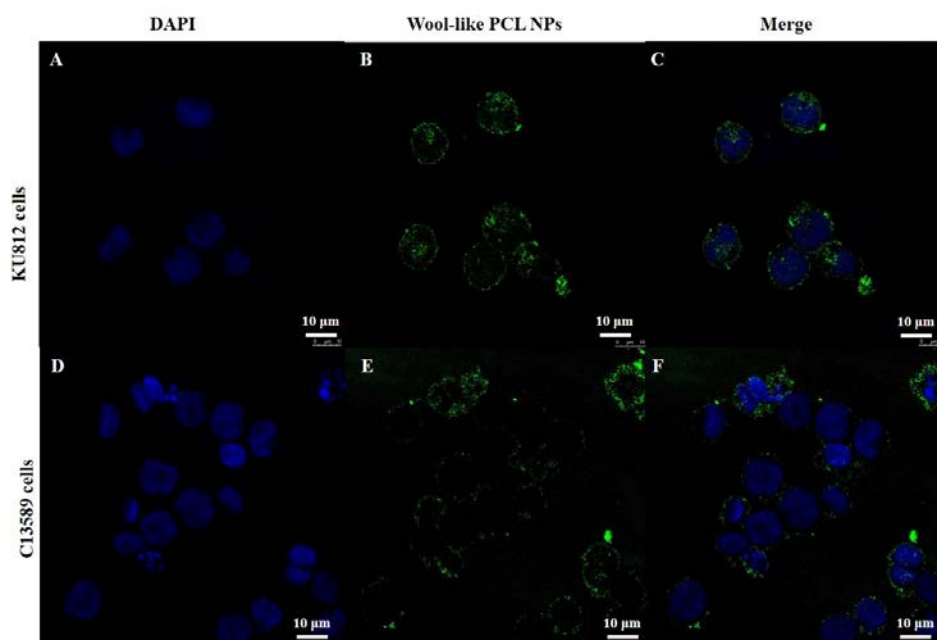
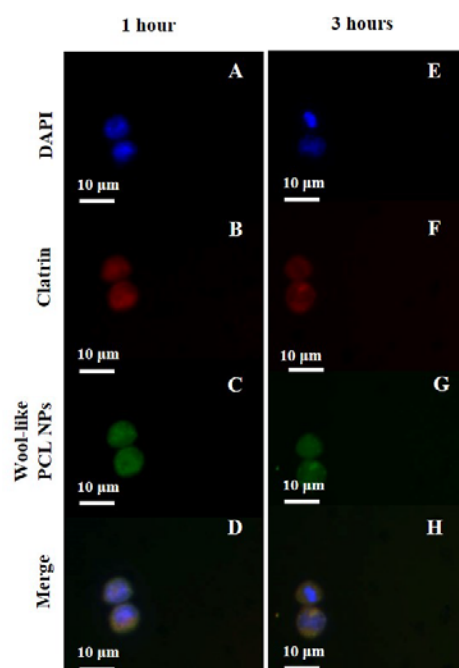


# Supplementary Materials: Wool-Like Hollow Polymeric Nanoparticles for CML Chemo-Combinatorial Therapy

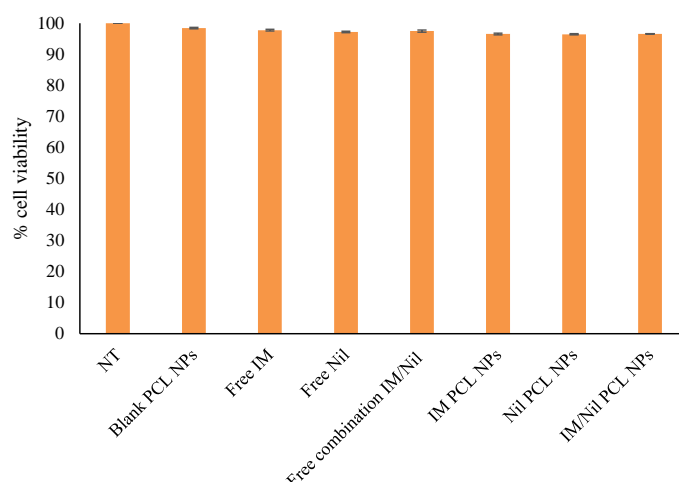
Barbara Cortese, Stefania D'Amone and Ilaria Elena Palamà



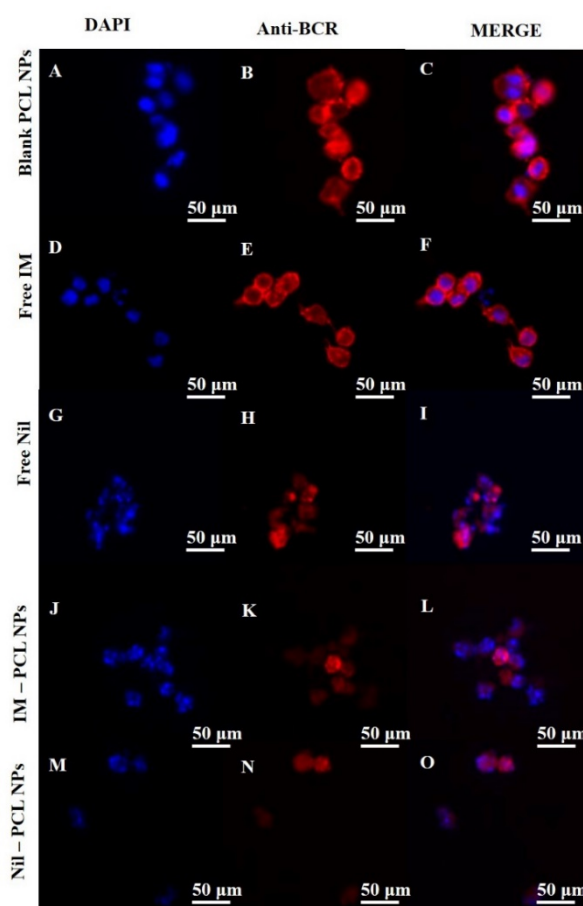
**Figure S1.** CLSM images of KU812 leukaemic cells (A, B, C) and healthy C13895 cells (D, E, F) after 3 hours of incubation with wool-like DiO PCL NPs (B,E-green). Cell nuclei were counterstained with DAPI (blue). Figures were imaged with a 63X objective lens. Scale bars: 10 µm.



**Figure S2.** Clathrin (red, B, F) immunofluorescence in KU812 leukaemia cells after 1 and 3 hours of incubation with wool-like DiO PCL NPs (green,C,G). Cell nuclei (A, E) were counterstained with DAPI (blue). Merge images (D, H) shows co-localization of NPs with clathrin. Figures were imaged with a 63X objective lens. Scale bars: 10 µm.



**Figure S3.** MTT test for cellular viability of C13895 control cells cultured for 48 hours in the absence (NT) or in the presence of free IM, free Nil, free IM/Nil combination, IM-PCL NPs, sparkling Nil-PCL NPs and wool-like IM/Nil PCL NPs to IC<sub>50</sub> doses efficacy on KU812 cells. Representative measurements of three distinct sets of data have been reported (t-Student test,  $P < 0.05$ ).



**Figure S4.** CLSM images of oncoprotein BCR-ABL cellular pattern distribution (B, E, H, K, N, red) in KU812 leukaemia cells after treatment for 24 hours with blank PCL NPs (0.05 mg/mL), free IM (150 nM), free Nil (30 nM), IM-PCL NPs (70 nM), sparkling Nil-PCL NPs (18 nM). Cell nuclei were counterstained with DAPI (A, D, G, J, M, blue). C, F, I, L, O show merge images. Representative images of three independent experiments have been reported. Figures were imaged with a 40X objective lens. Scale bars: 50  $\mu$ m.

**Table S1.** Combination index (CI) using different ratio of IM:Nil released by wool-like PCL NPs toward Ku812 cells. A synergistic effect is observed when the  $CI < 1$ , an additive effect is observed when  $CI = 1$ , and an antagonistic effect is observed when  $CI > 1$ .

Ratio IM:Nil	CI	Effect
1:1	0.26	Synergistic
3:1	0.83	Synergistic
5:1	2.16	Antagonist
1:3	1.6	Antagonist
1:5	2.6	Antagonist