

Supplementary Information

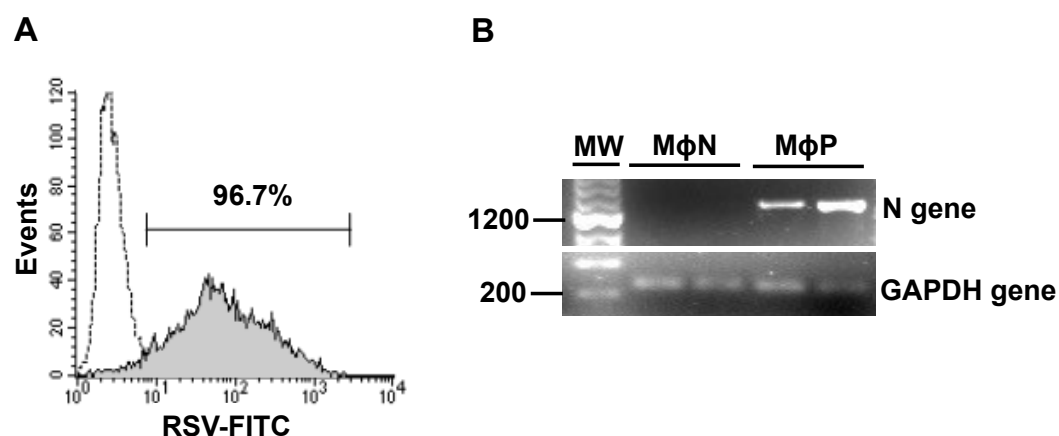


Figure S1. Persistent infection in murine macrophages. **(A)** Direct immunofluorescence to detect structural viral proteins by flow cytometry. Persistently RSV-infected macrophages (MΦP) from passage number 95 (solid line) and non-infected macrophages (MΦN) from passage 85 (dashed line) were stained under the same conditions to detect RSV proteins. Percentage of positive cells is reported; **(B)** Conventional RT-PCR to detect the expression of *N* gene. Two different passages of MΦP (95 and 97) were analyzed, along with two passages of MΦN (P85 and P90) as negative control. Expression of *GAPDH* gene was analyzed as endogenous control.