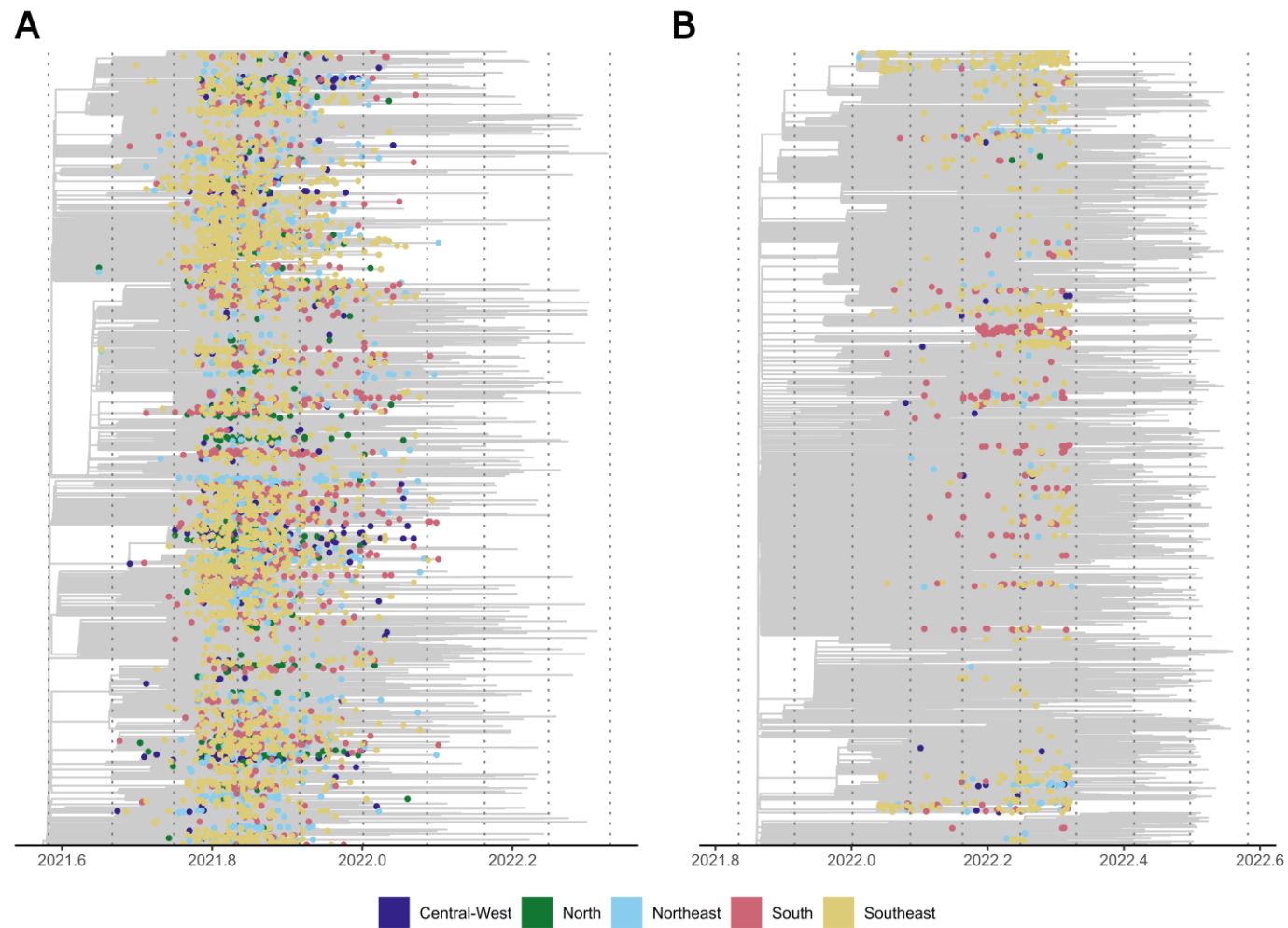


**Figure S1. Distribution of SARS-CoV-2 lineages in Brazil between October 2021 and April 2022.** In (A) is represented the absolute number of genomes by lineage and in (B), their relative frequency.



**Figure S2. The time tree of the BA.1 (A) and BA.2 (B) sequences analyzed.** Colors represent the region of collection of the Brazilian sequences, evidencing the multiple introductions in the country.

