

Supplementary Materials:

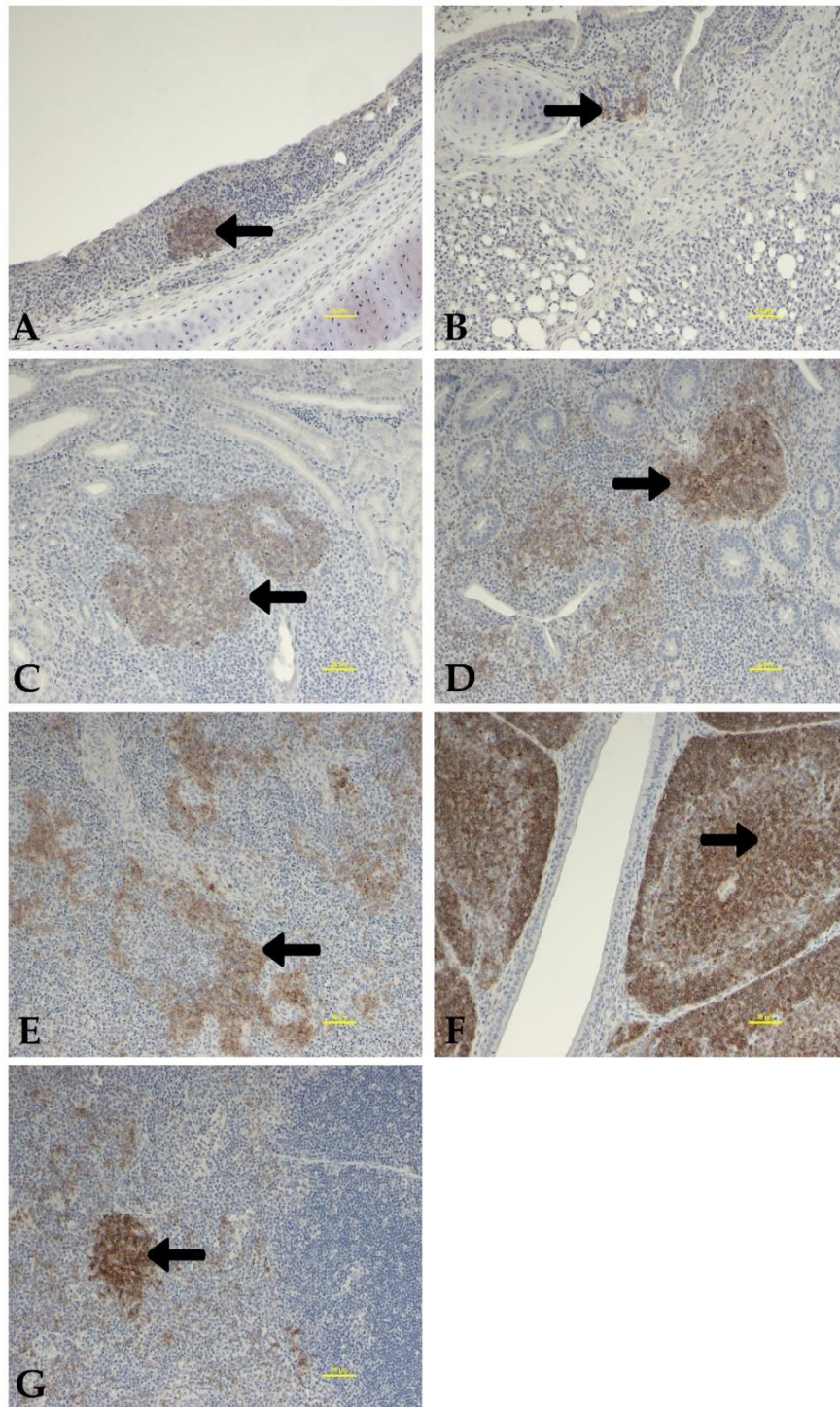


Figure S1. Immunohistochemical detection of B (Bu-1+) lymphocytes in trachea (A), lung (B), kidney (C), cecal tonsils (D), spleen (E), bursa of Fabricius (f), and thymus (G) collected at 4 and 11 dpi following infection with Canadian IBV DMV/1639 strain. Bu-1+ cells were stained with deep brown (indicated with black arrows). Scale bar = 50 μm.

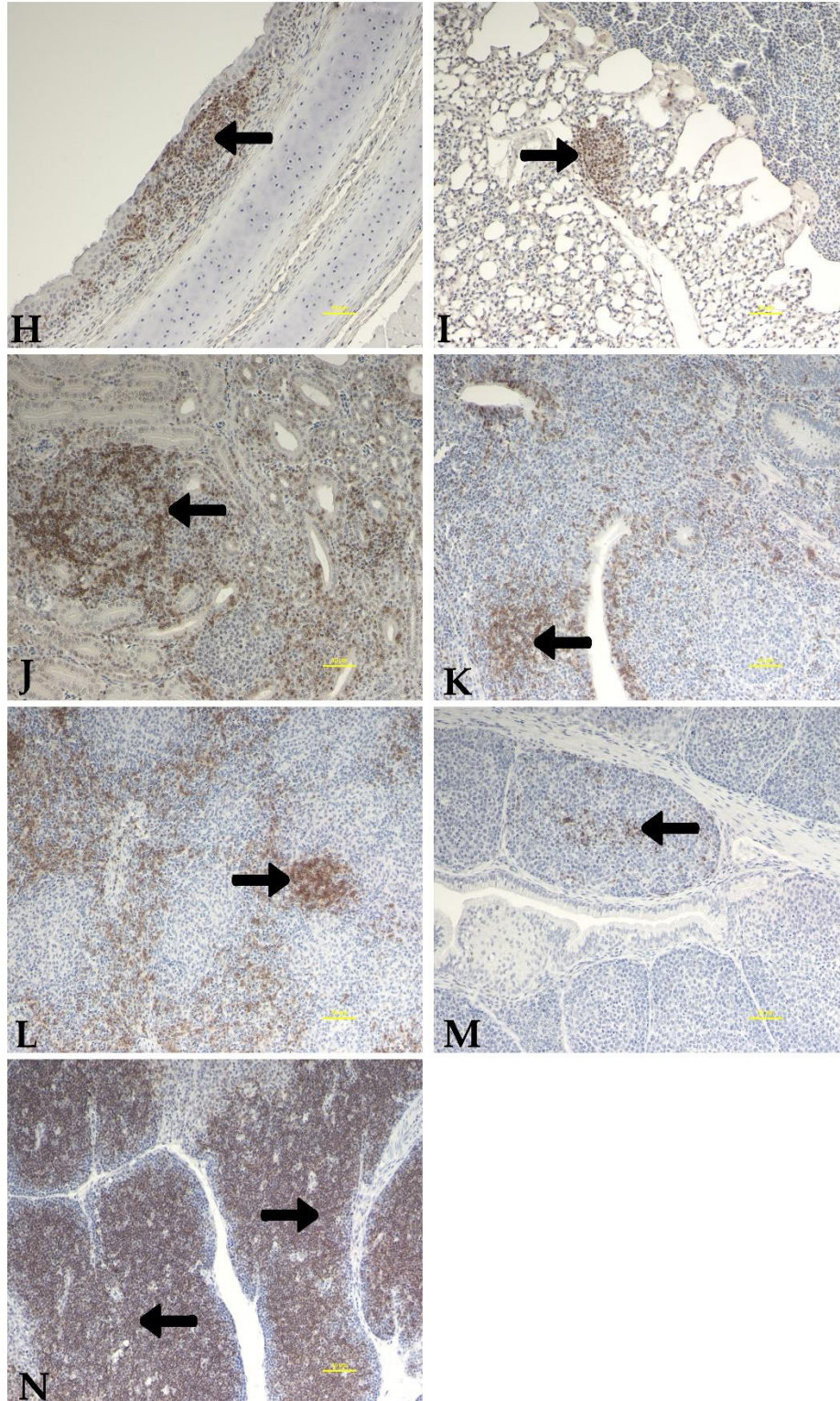


Figure S2. Immunohistochemical detection of CD8+ cells in the trachea (H), lung (I), kidney (J), cecal tonsils (K), spleen (L), bursa of Fabricius (M), and thymus (N) collected at 4 and 11 days following infection with Canadian IBV DMV/1639 strain. CD8+ cells were stained with deep brown (indicated with black arrows). Scale bar = 50 μ m.