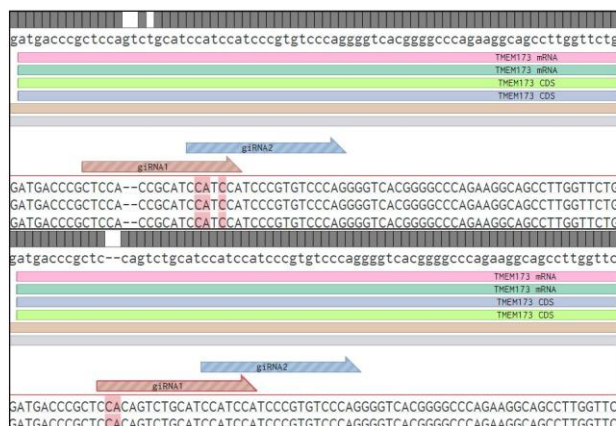
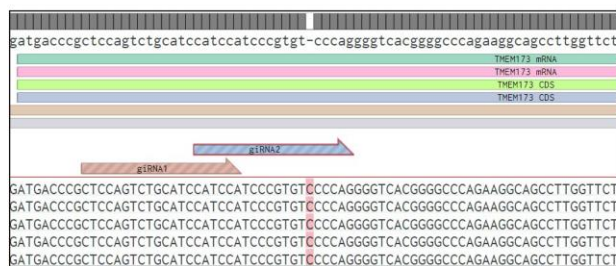


Supplementary

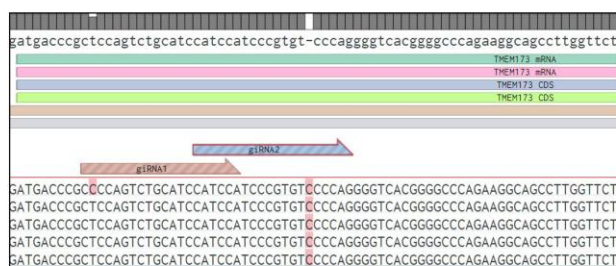
1-4-2



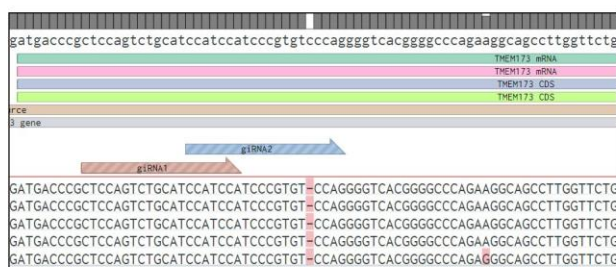
2-7-1



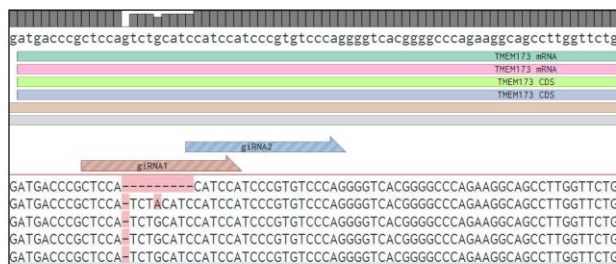
2-7-6



2-7-12



1-4-4



Supplementary Figure S1. The STING gene insertion and deletion in Marc-145 cell clones from CRISPR gRNA treatment.

The monkey STING genome DNA region covering Table 2. the PCR products of individual Marc-145 clones of STING were cloned into T vectors and sequenced for analysis of base insertion/deletion (indel) mutations. As indicated, the four cell clones including 1-4-2, 2-7-1, 2-7-6 and 2-7-12 are STING homologous knockout cells, whereas cell clone 14-4 is likely STING heterologous knockout cells.