

Supplementary Materials: Artificial Intelligence-Assisted Loop Mediated Isothermal Amplification (ai-LAMP) for Rapid Detection of SARS-CoV-2

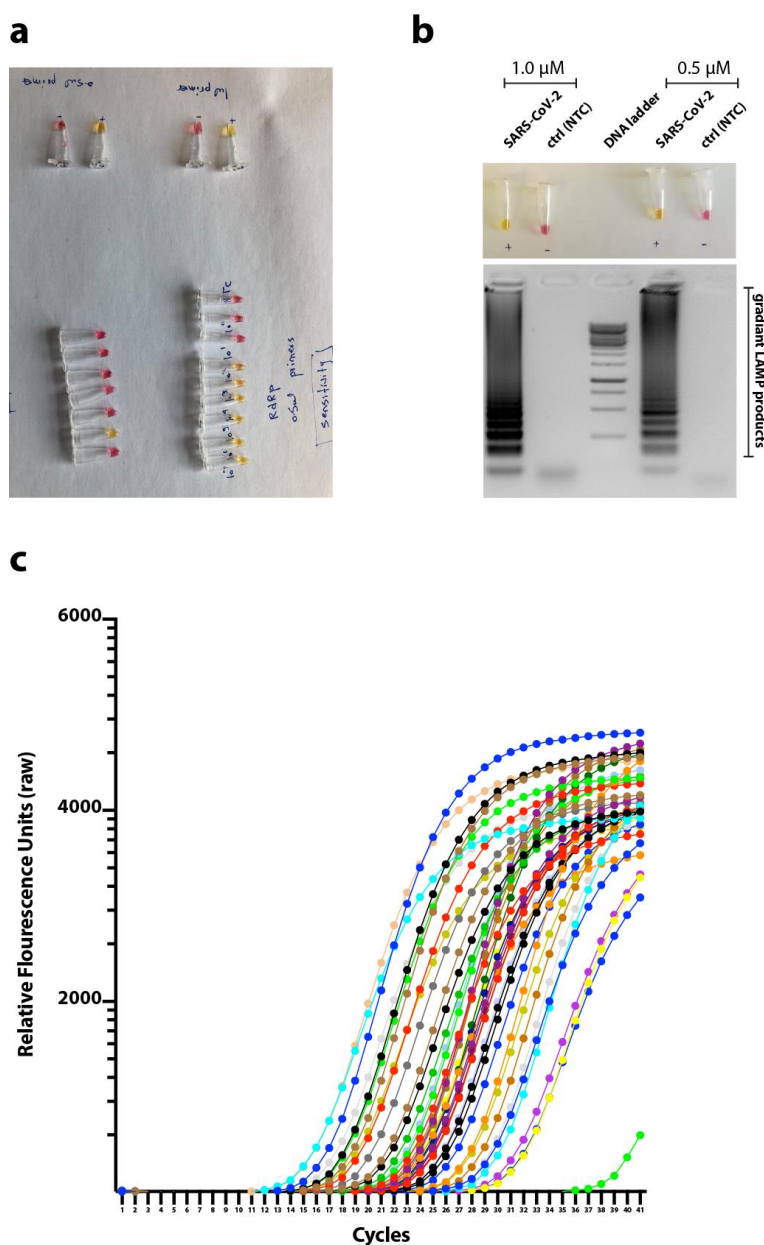


Figure 1. Optimization of LAMP for the detection of SARS-CoV-2. (a) Sensitivity and specificity of the LAMP primers used in the study pertaining to the Fig. 2 and 3 in the main manuscript. (b) Optimization of different primers concentration used in the ai-LAMP assay. (c) Raw fluorescence units for the spiked miRNA detected by the qRT-LAMP. Associated Ct values are provided in the Fig. 6H in the main manuscript.