

Supplementary: Influences of Extreme Weather Conditions on the Carbon Cycles of Bamboo and Tea Ecosystems

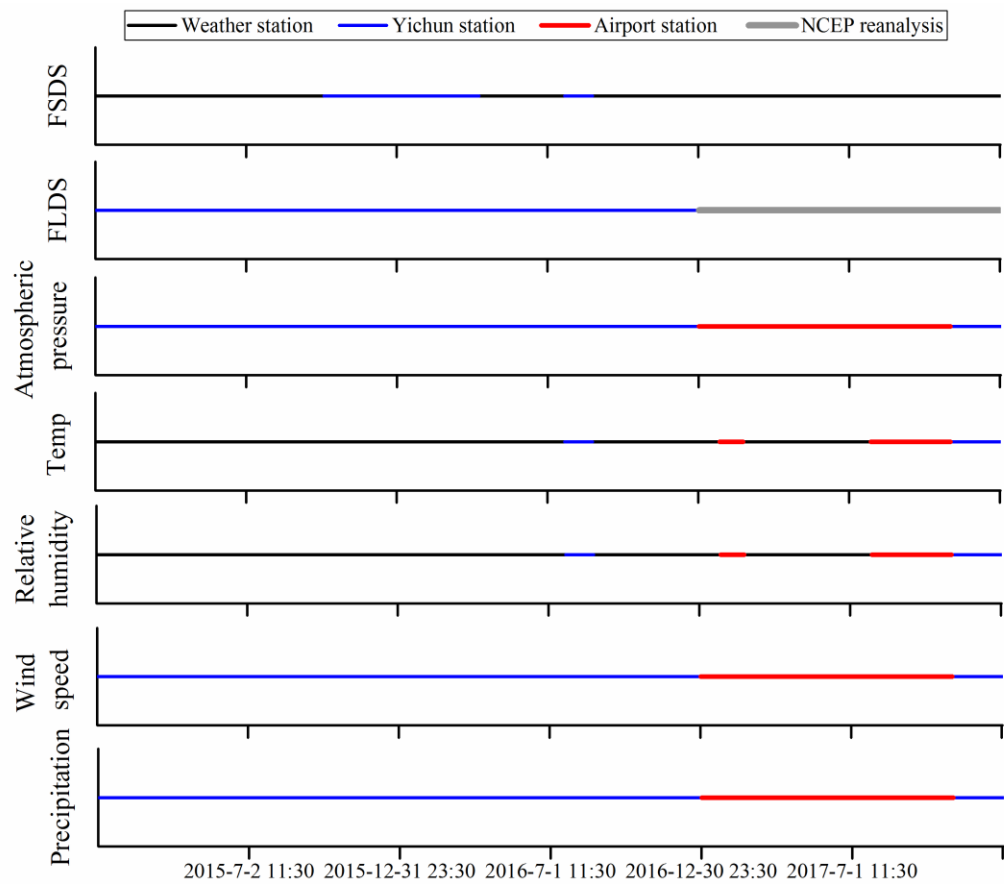


Figure S1. Data availability for the modeling study. FSDS, incident solar radiation; FLDS, incident longwave radiation; Temp, surface air temperature.

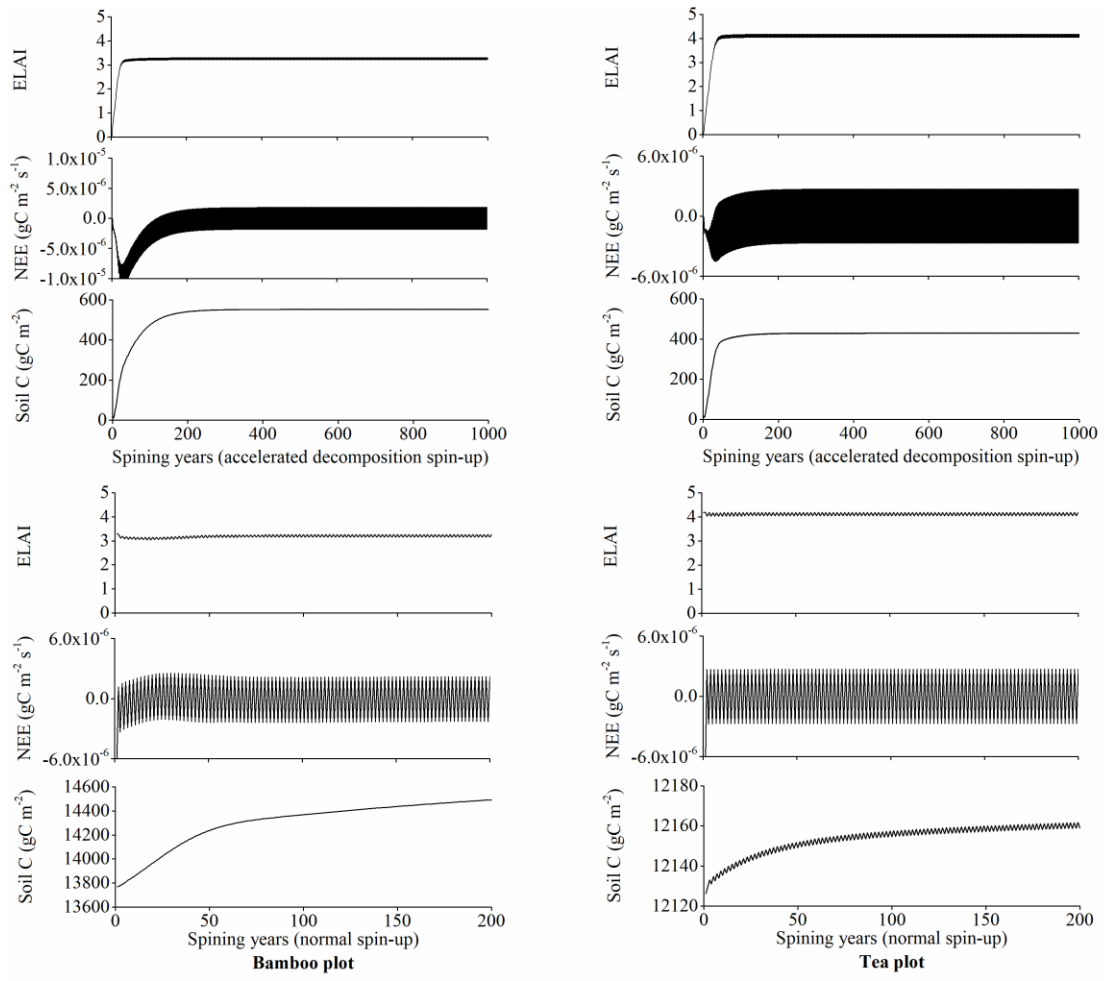


Figure S2. Accelerated decomposition spinup and final spinup results for bamboo and tea plots.

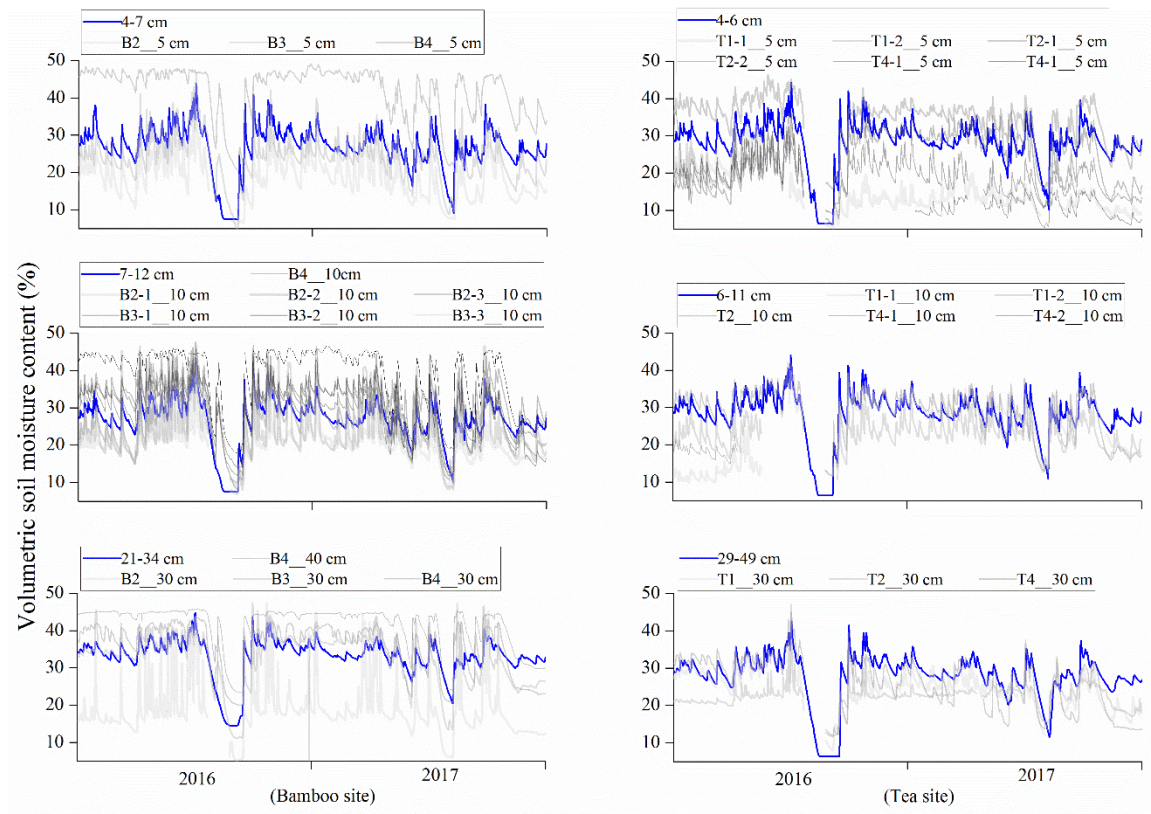


Figure S3. Observed and modeled daily soil water content at different depths at bamboo and tea plots.

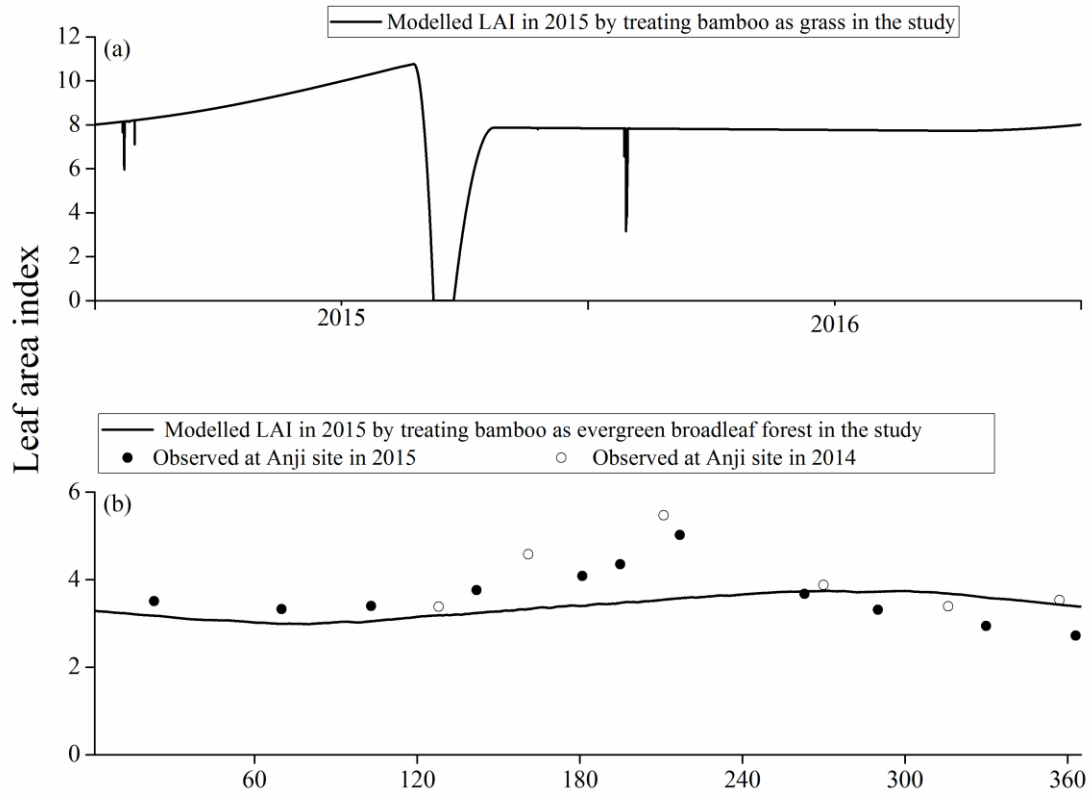


Figure S4. Observed (dots) and modeled (lines) leaf area index for Moso bamboo.

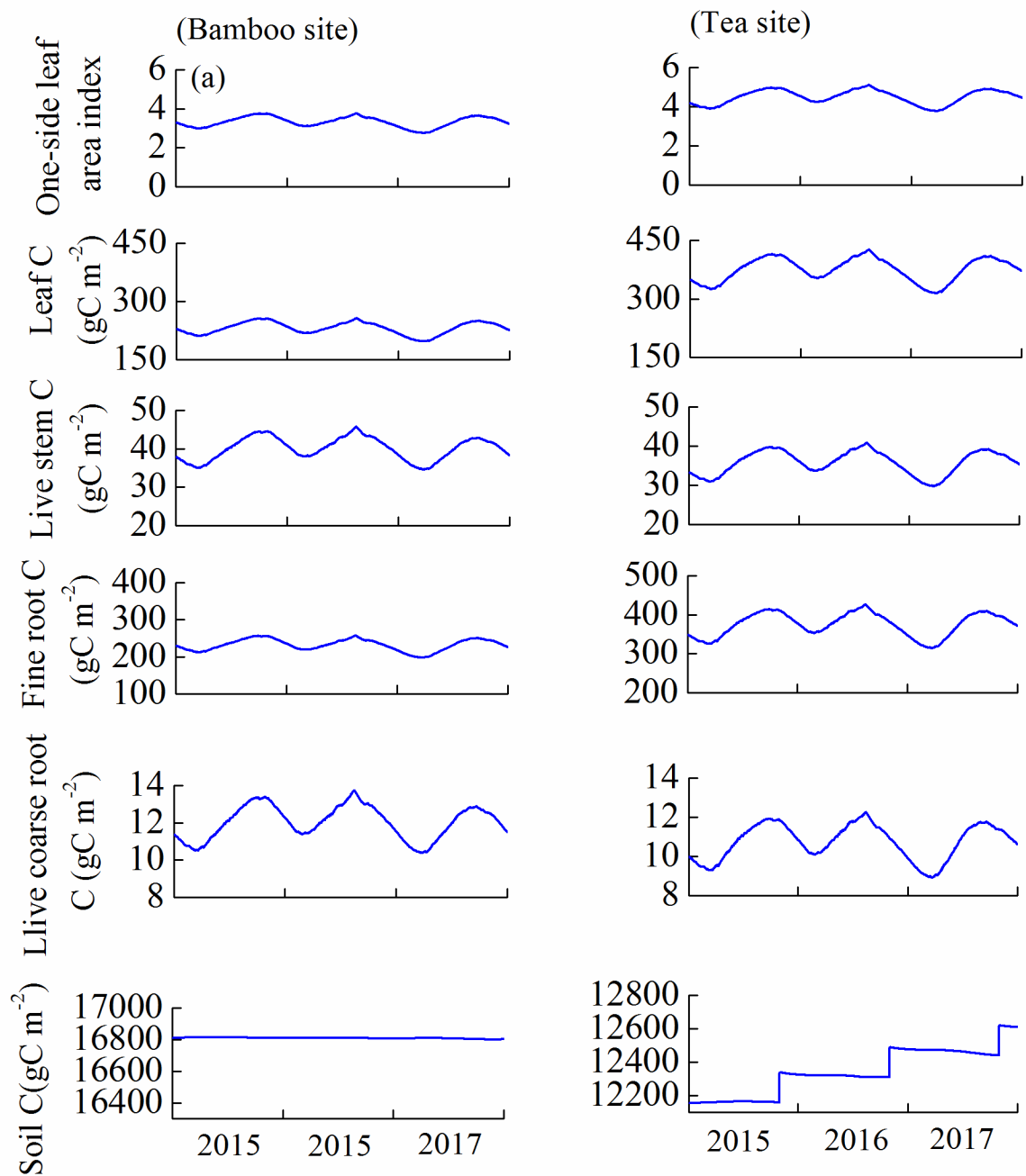


Figure S5. Modeled leaf area index and various carbon pools.

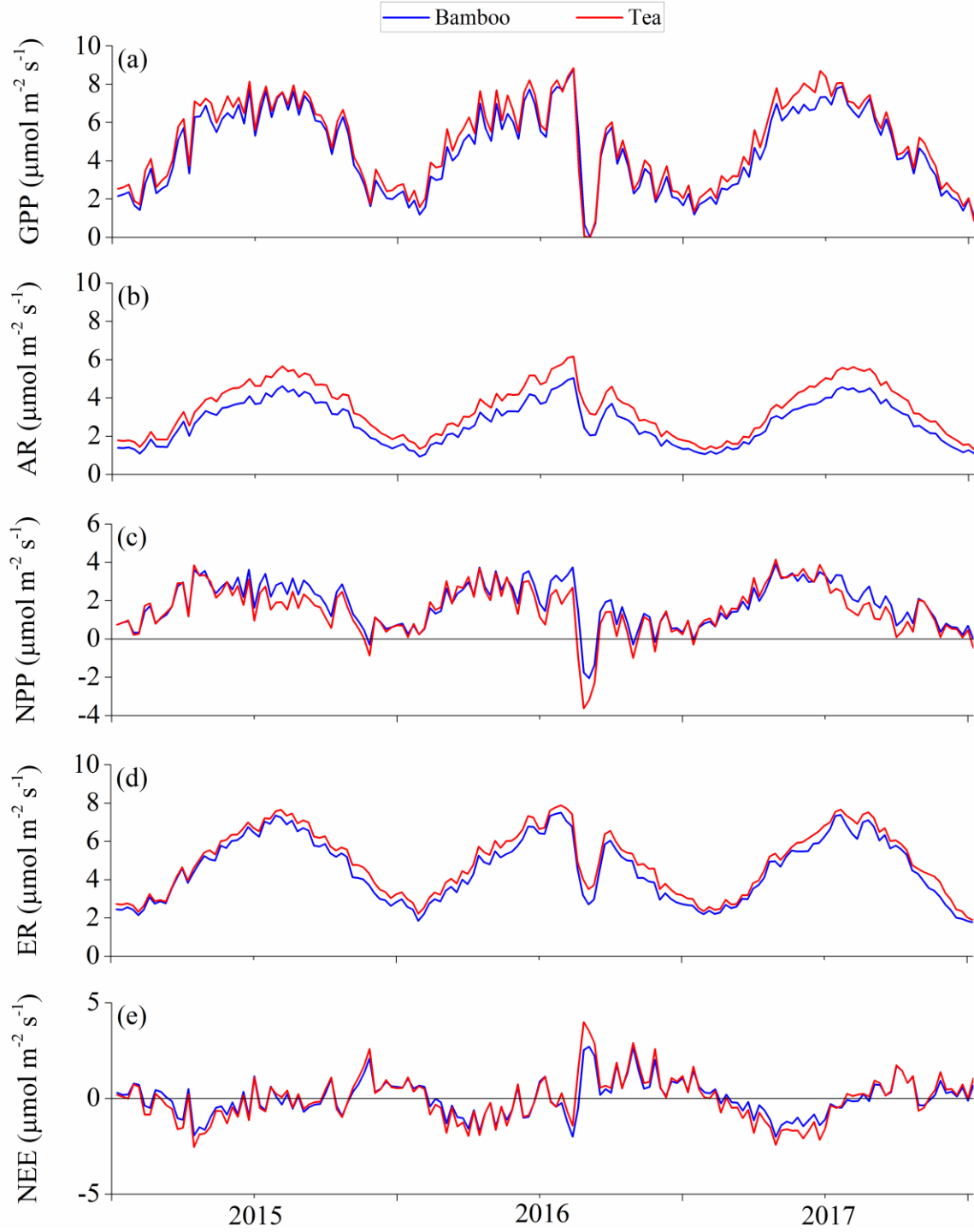


Figure S6. Modeled weekly carbon fluxes at the two study plots. AR, autotrophic respiration; ER, ecosystem respiration; GPP, gross primary production; NEE, net ecosystem exchange; NPP, net primary production.