

Correction

Correction: Michelotti, L. A. and Miesel J. R. Source Material and Concentration of Wildfire-Produced Pyrogenic Carbon Influence Post-Fire Soil Nutrient Dynamics. *Forests* 2015, 6, 1325–1342

Lucas A. Michelotti * and Jessica R. Miesel

Department of Forestry, Michigan State University, 480 Wilson Road Room126, East Lansing, MI 48824, USA; E-Mail: mieselje@msu.edu

* Author to whom correspondence should be addressed; E-Mail: michel44@msu.edu; Tel.: +1-517-355-8239; Fax: +1-517-432-1143.

Received: 7 October 2015 / Accepted: 9 October 2015 / Published: 15 October 2015

The authors wish to make the following corrections to this paper [1]:

We discovered a calculation error in our CO₂ flux data reported in our published manuscript [1]. As a result of the calculation error, the values reported for CO₂-C flux from our laboratory incubation experiment were underestimated by a factor of 3.90. Further, our corrected data indicate that CO₂-C fluxes for type and concentration of wildfire-produced pyrogenic carbon at T₁₀ follow the same trends as the other time points, whereas, due to a graphing error, we had previously ascribed the different T₁₀ response to the initial disturbance of setting up the incubations. Here, we present a corrected figure to replace **Figure 3** in the original manuscript. We have compared the results of the statistical analysis of the original dataset to the results of analysis of the corrected dataset, and we found that the conclusions of our study do not differ between the original and the corrected datasets. We present a corrected **Table 2** with the correct F and *p*-values. The corrected **Table 2** shows that there are no changes to the conclusions stated in our original manuscript.

The authors apologize for any inconvenience caused to the readers by these changes. We will update the article and the original version will remain available on the article webpage.

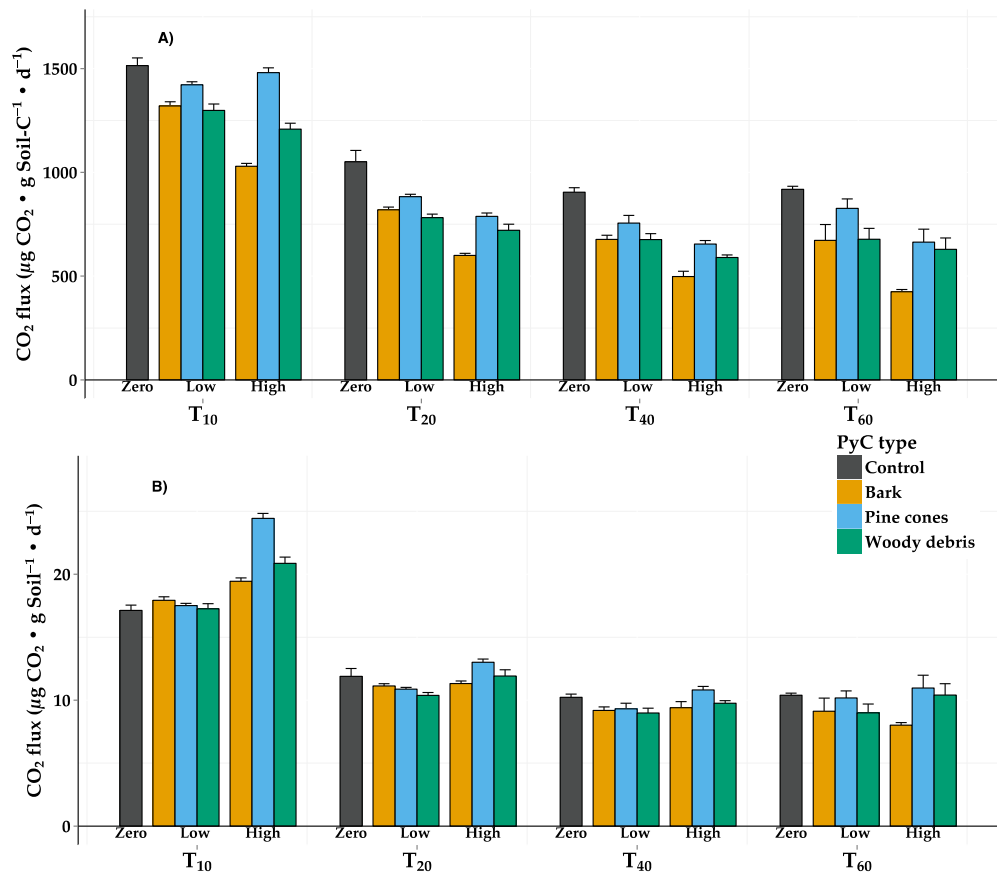


Figure 3. Corrected figure: CO₂ flux, in terms of (A) g soil C per day and (B) g soil per day, of soils incubated with charred bark (yellow), charred pine cones (blue), or charred woody debris (green) at zero (black, control), low (0.1%), or high (1.0%) PyC concentrations. The CO₂ concentrations were measured on days 10, 20, 40, and 60 (T₁₀, T₂₀, T₄₀, T₆₀, respectively). The error bars represent one standard error.

Table 2. Corrected table of F-statistics and *p*-values for ANOVAs of soil respiration for treatment, time, and treatment × time for the corrected dataset. All PyC types and concentrations fall under treatment.

	Main Effect	F Value	p Value
µg CO ₂ g soil-C ⁻¹ day ⁻¹	Treatment	56.28	<0.0001
	Time	1179.68	<0.0001
	Treatment × Time	4.07	<0.0001
µg CO ₂ g soil ⁻¹ day ⁻¹	Treatment	14.80	<0.0001
	Time	1546.33	<0.0001
	Treatment × Time	14.55	<0.0001

Reference

1. Michelotti, L.A.; Miesel, J.R. Source material and concentration of wildfire-produced pyrogenic carbon influence post-fire soil nutrient dynamics. *Forests* **2015**, *6*, 1325–1342.

© 2015 by the authors; licensee MDPI, Basel, Switzerland. This article is an open access article distributed under the terms and conditions of the Creative Commons Attribution license (<http://creativecommons.org/licenses/by/4.0/>).