

Supplemental material: Figures

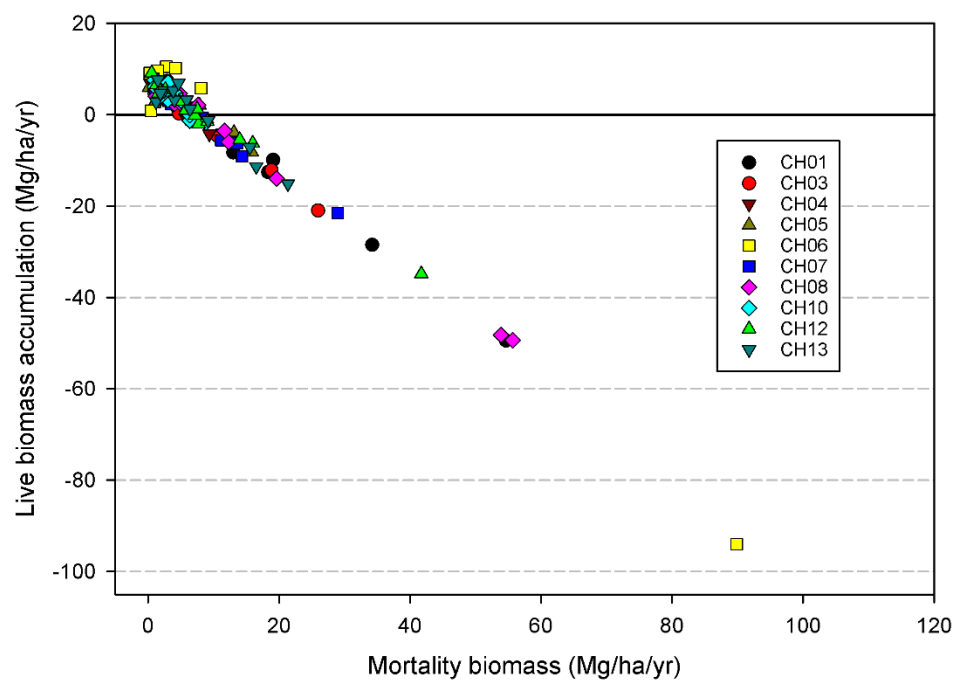


Figure S-1. Live biomass accumulation vs mortality biomass, with mortality biomass for full range of values.

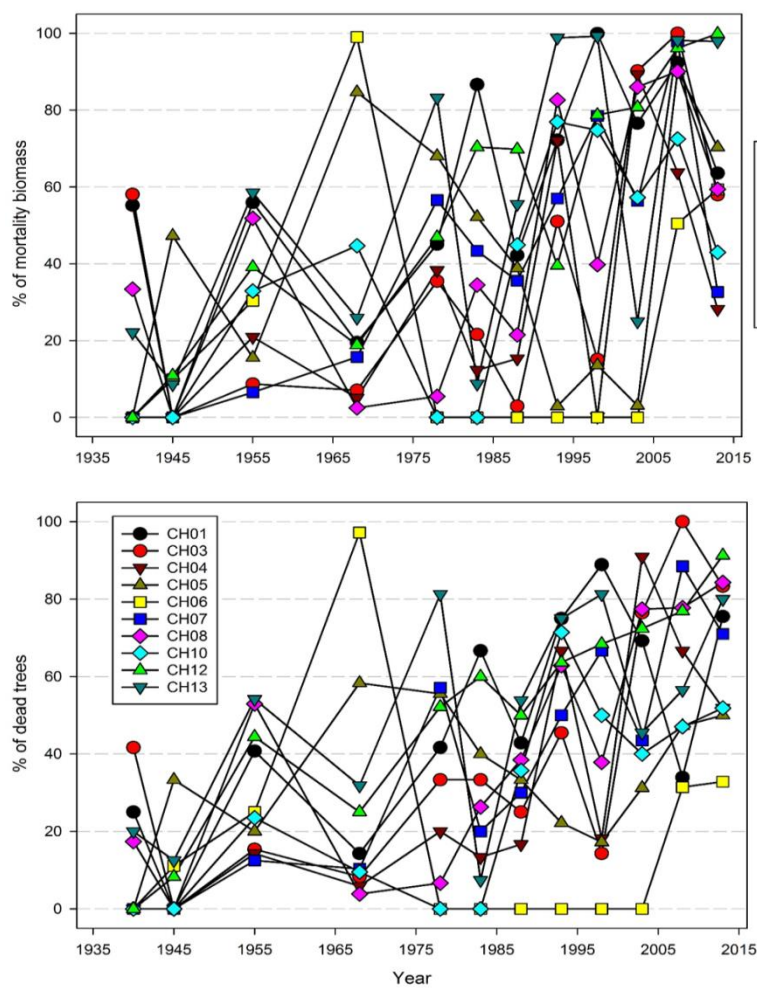


Figure S-2. Proportion of mortality of biomass (upper) and trees (lower) related to wind for individual plots.

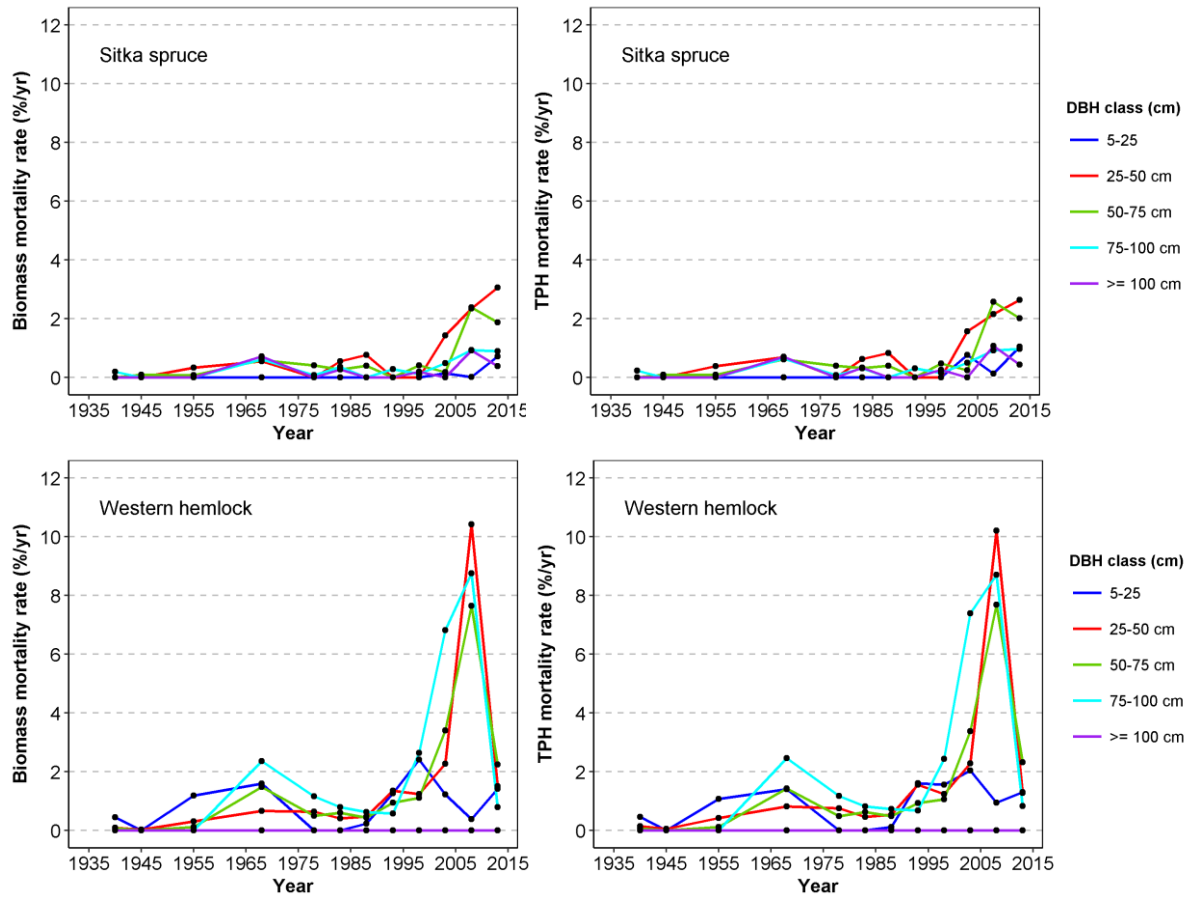


Figure S-3. Wind-related annual mortality rate expressed on a biomass (left) or trees (right) basis for Sitka spruce (upper) and western hemlock (lower) for diameter at breast height (DBH) size classes over time.

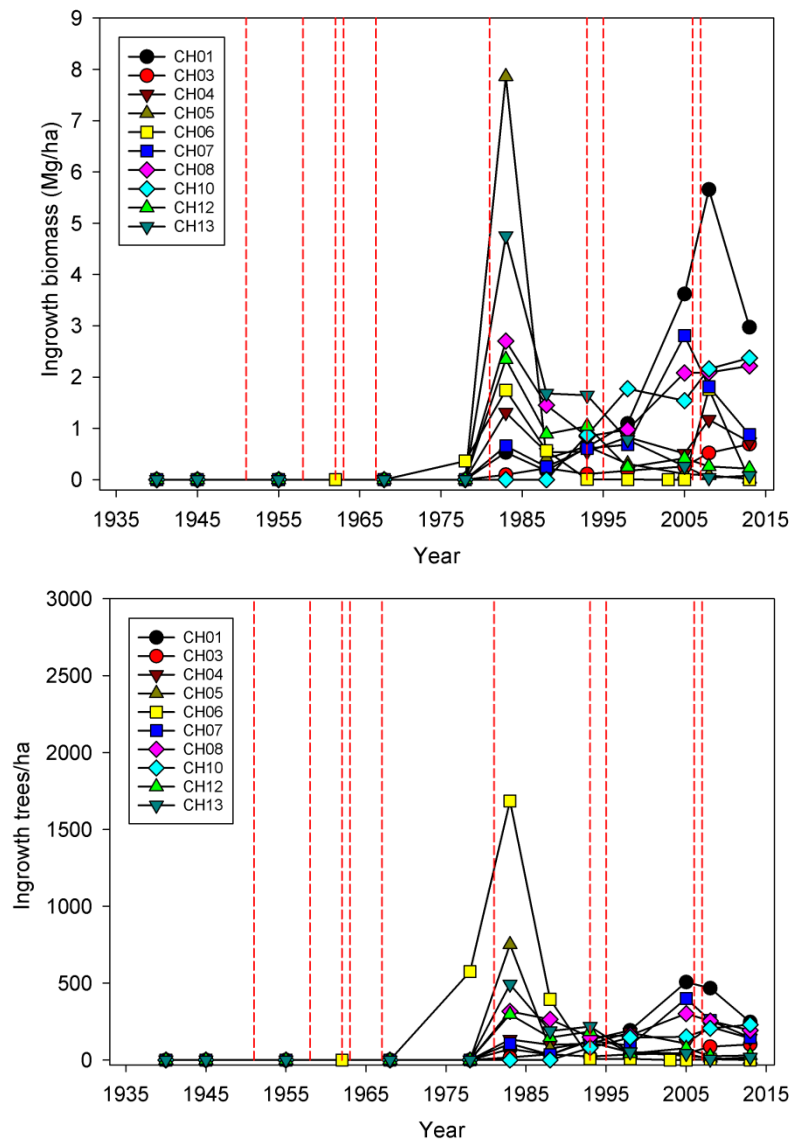


Figure S-4. Long-term trends in plot-level ingrowth, expressed as bole biomass (Mg) per hectare (upper), and number of trees per hectare (lower) for individual plots.

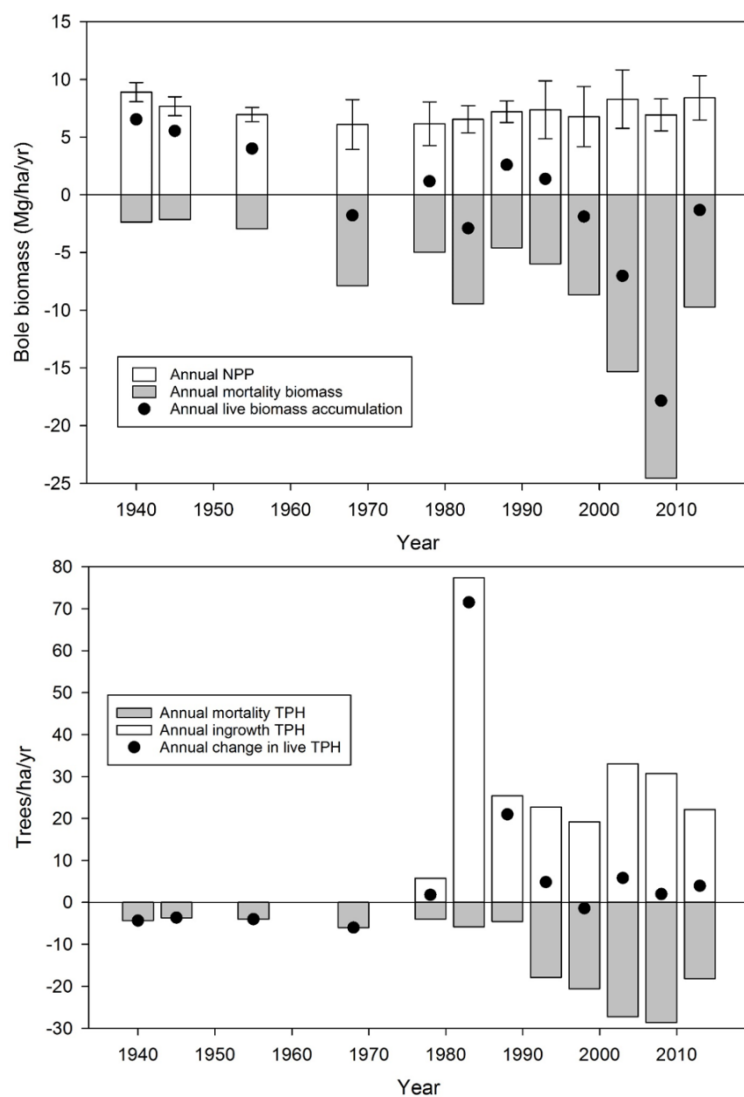


Figure S-5 Input output balances for biomass (upper) and trees per ha (lower) across ten permanent plots.

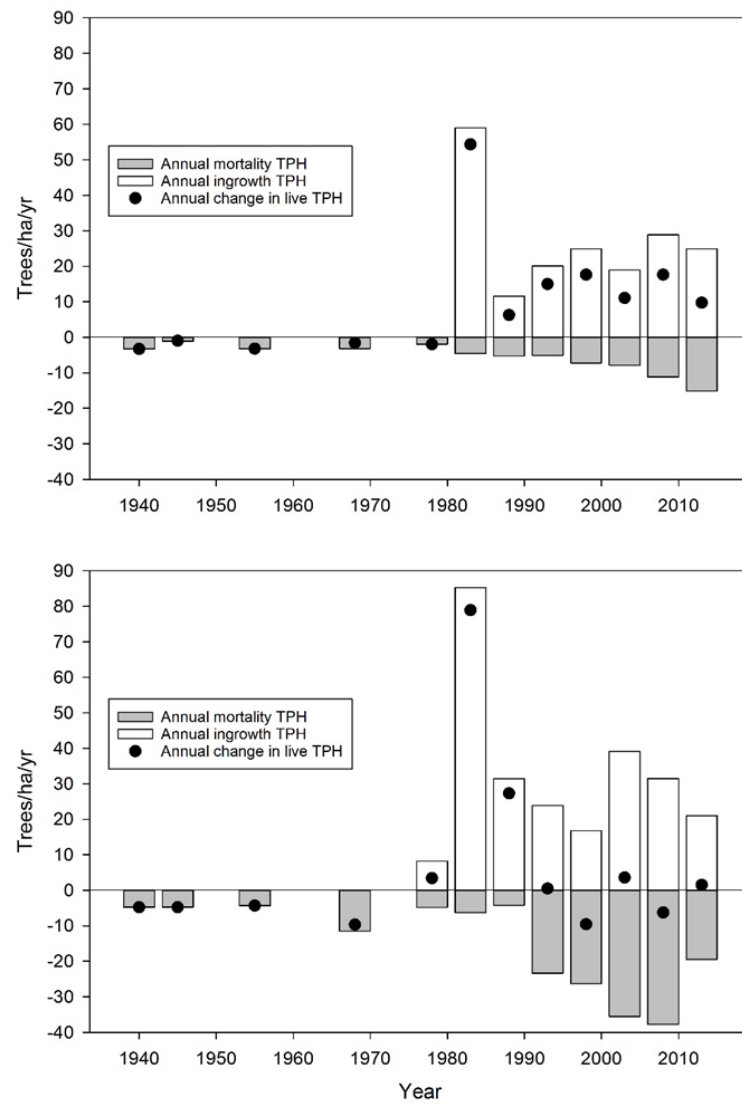


Figure S-6. Annual mortality TPH, ingrowth TPH, and change in live TPH in plots not significantly impacted by wind (upper, n=3) vs those significantly impacted by wind (lower, n=7).

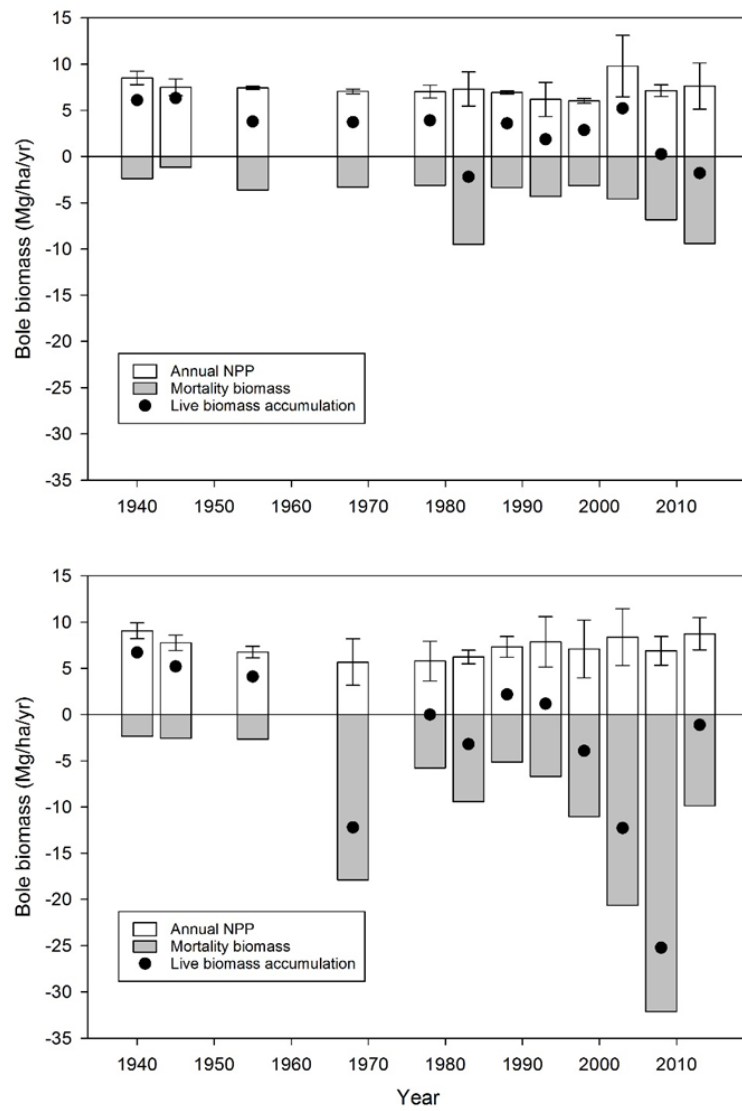


Figure S-7. Annual biomass accumulation, mortality and NPP (Net Primary Production) in plots not significantly impacted by wind (upper, n=3) vs those significantly impacted by wind (lower, n=7).