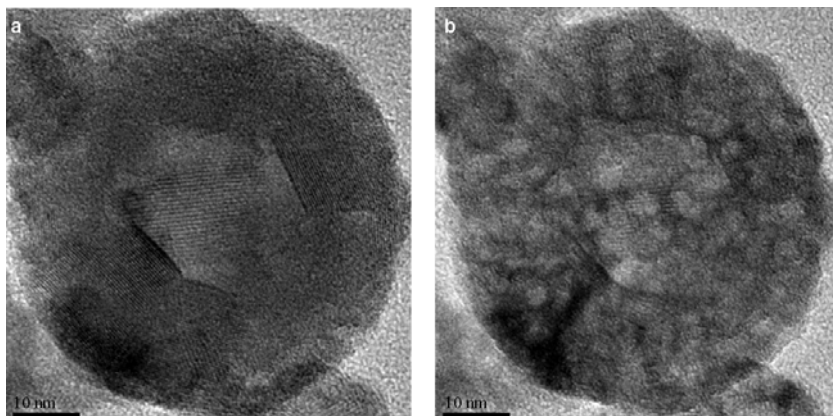


## Stability criteria of fullerene-like nanoparticles: comparing $V_2O_5$ to layered metal dichalcogenides and dihalides

Roi Levi <sup>1</sup>, Maya Bar-Sadan <sup>2</sup>, Ana Albu-Yaron <sup>1</sup>, Ronit Popovitz-Biro <sup>3</sup>, Lothar Houben <sup>2</sup>, Yehiam Prior <sup>4</sup> and Reshef Tenne <sup>1,\*</sup>

**Figure S1.** TEM images of NIF- $V_2O_5$  (a) before and (b) after typical e-beam damage due to reduction.



**Figure S2.** Post reaction treatment (PRT) scheme (1) Quartz tube. (2) Collection plate. (3) Furnace. (4) Oxygen inlet.

