

Supporting Information

Bioconjugation Strategy for Ceramic Membranes Decorated with *Candida Antarctica* Lipase B—Impact of Immobilization Process on Material Features

Joanna Kujawa ¹, Marta Głodek ¹, Izabela Koter ¹, Guoqiang Li ¹, Katarzyna Knozowska ¹,
Wojciech Kujawski ^{1,*}

¹ Nicolaus Copernicus University in Toruń, Faculty of Chemistry, 7 Gagarina Street, 87-100 Toruń, Poland;

* Correspondence: kujawski@chem.umk.pl; Tel.: +48-56-611-45-17 (W.K.)
Received: date; Accepted: date; Published: date

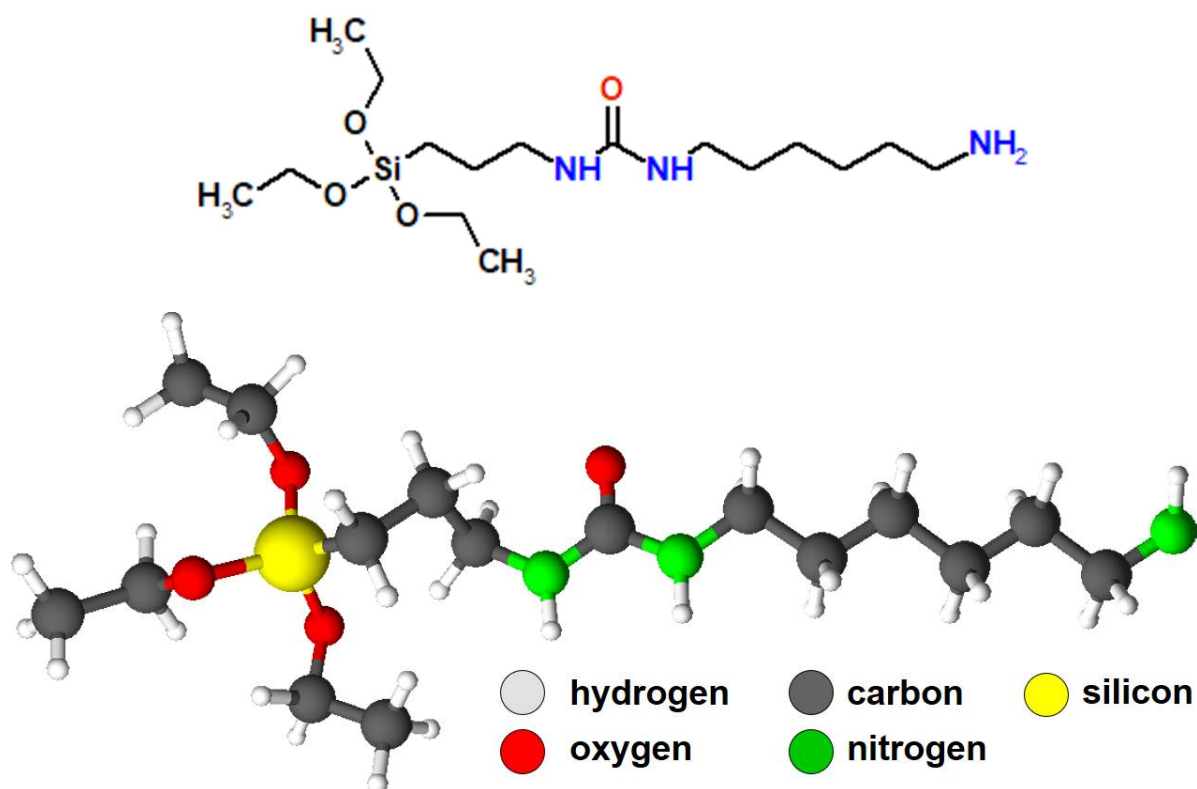


Figure S1. Synthesized modifier.

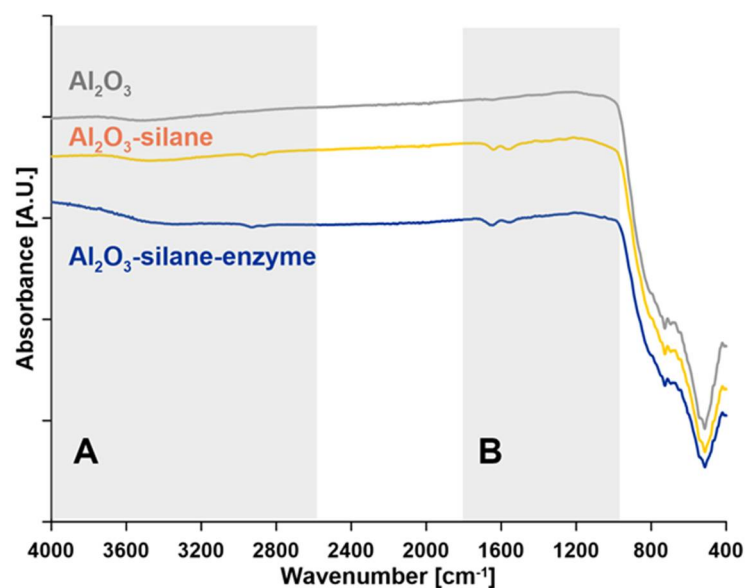


Figure S2. ATR-FTIR spectra of pristine Al_2O_3 powder and Al_2O_3 powder modified with silane. Sections A and B are presented in Figure 1 in detail.

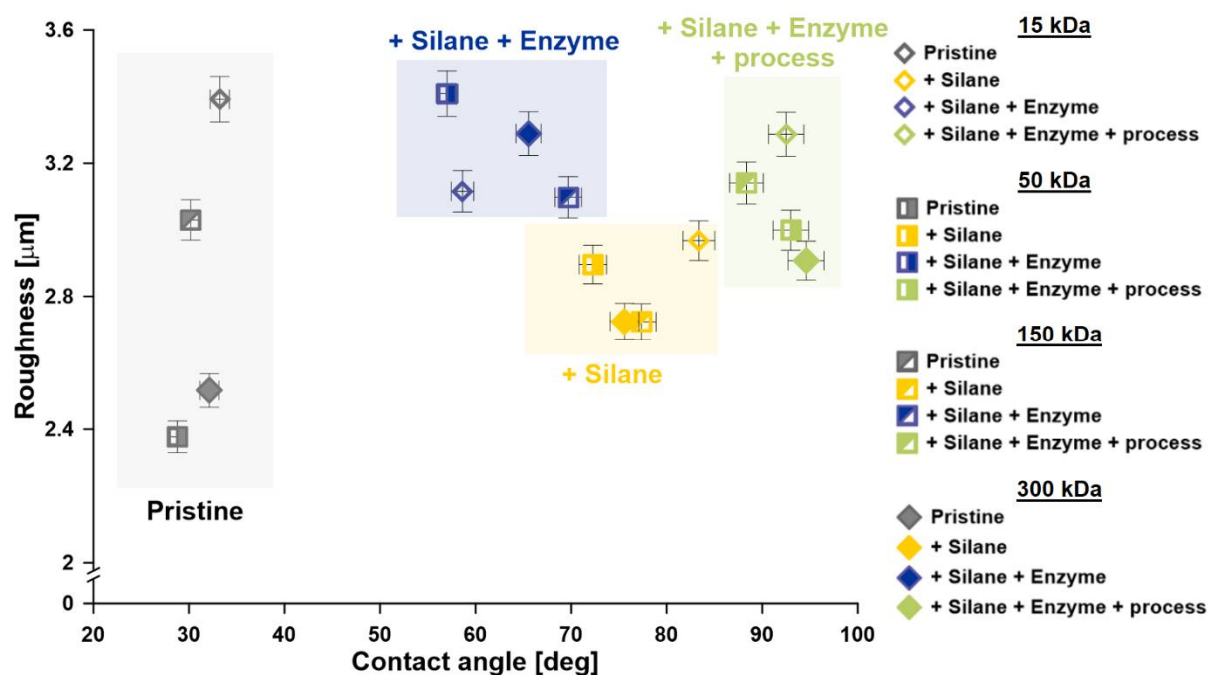


Figure S3. Relation between roughness and contact angle of the investigated membranes.