

Supplementary Material

Novel Alumina Matrix Composites Reinforced with MAX Phases—Microstructure Analysis and Mechanical Properties

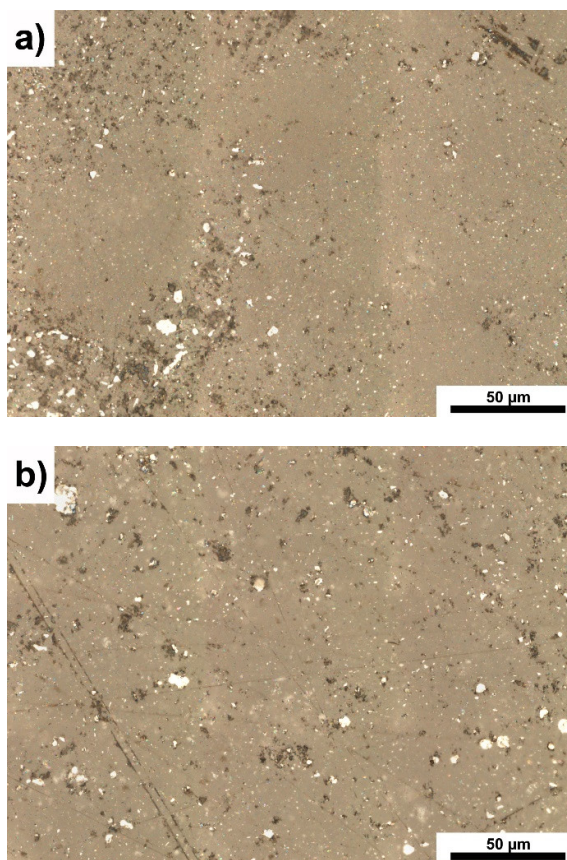
Mateusz Petrus ¹, Jarosław Wozniak ^{1,*}, Tomasz Cygan ¹, Wojciech Pawlak ² and Andrzej Olszyna ¹

¹ Faculty of Material Science and Engineering, Warsaw University of Technology, ul. Wołoska 141, 02-507 Warsaw, Poland

² Faculty of Mechanical Engineering, Lodz University of Technology, Stefanowskiego 1/15 St, 90-924 Lodz, Poland

* Correspondence: jaroslaw.wozniak@pw.edu.pl

Supplementary information



Citation: Petrus, M.; Wozniak, J.; Cygan, T.; Pawlak, W.; Olszyna, A. Novel Alumina Matrix Composites Reinforced with MAX Phases—Microstructure Analysis and Mechanical Properties. *Materials* **2022**, *15*, 6909. <https://doi.org/10.3390/ma15196909>

Academic Editor: Yin Fan

Received: 09 September 2022

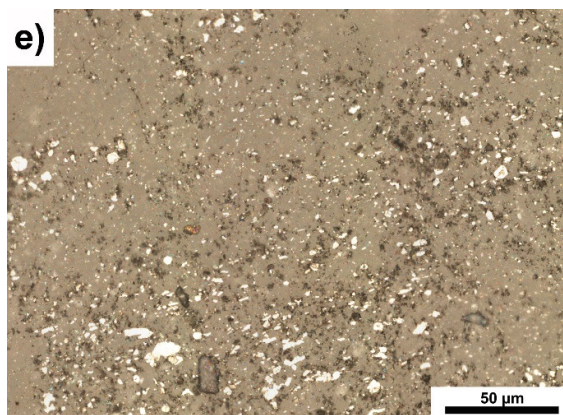
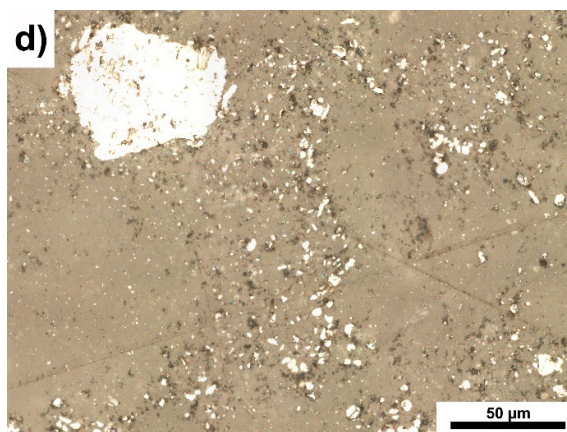
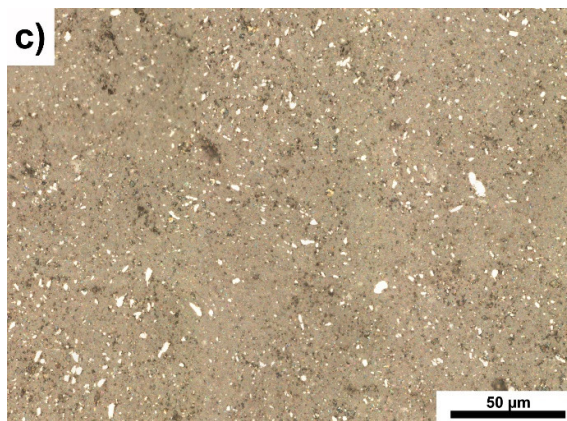
Accepted: 30 September 2022

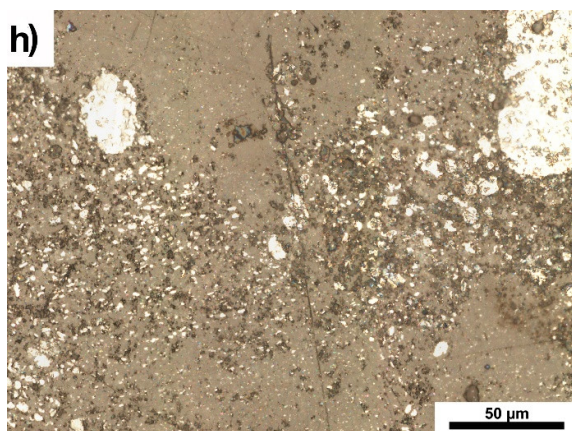
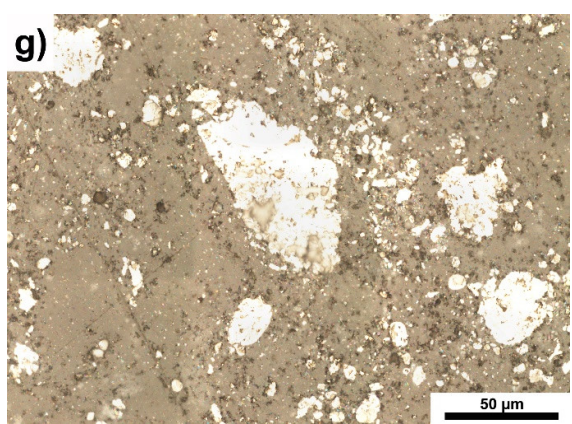
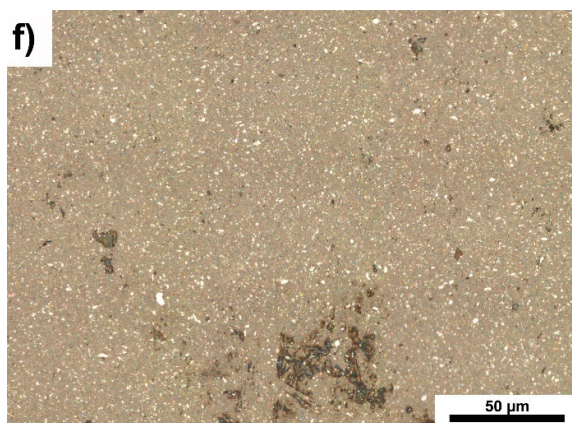
Published: 5 October 2022

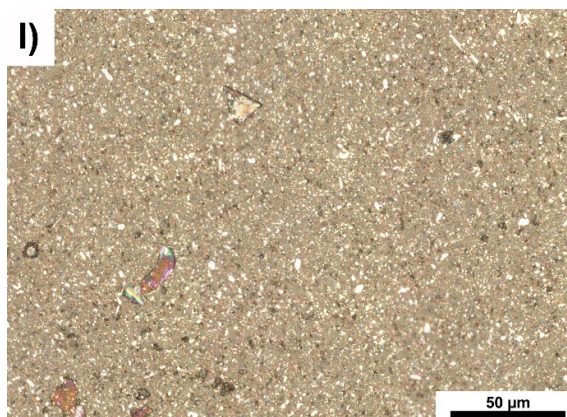
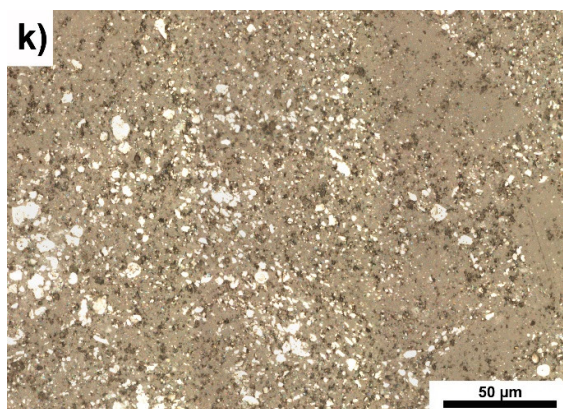
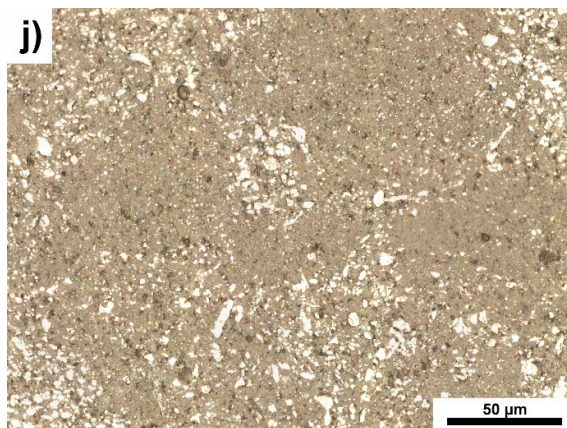
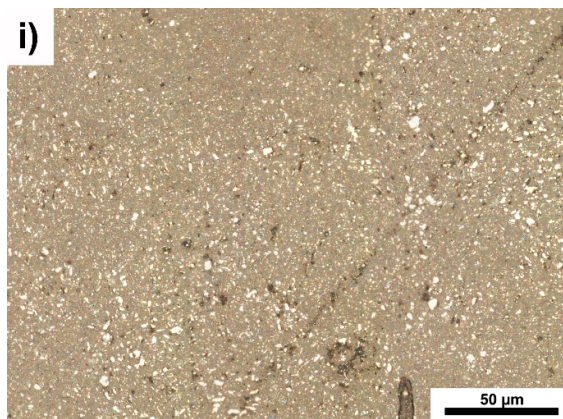
Publisher's Note: MDPI stays neutral with regard to jurisdictional claims in published maps and institutional affiliations.



Copyright: © 2022 by the authors. Licensee MDPI, Basel, Switzerland. This article is an open access article distributed under the terms and conditions of the Creative Commons Attribution (CC BY) license (<https://creativecommons.org/licenses/by/4.0/>).







Scheme S1. AlC₂ phase for obtained composites. **a)** Al₂O₃ — 5wt% Ti₃AlC₂ from attritor mill; **b)** Al₂O₃ — 5wt% Ti₃AlC₂ from horizontal mill; **c)** Al₂O₃ — 5wt% Ti₃AlC₂ from planetary mill; **d)** Al₂O₃ — 10wt% Ti₃AlC₂ from attritor mill; **e)** Al₂O₃ — 10wt% Ti₃AlC₂ from horizontal mill; **f)** Al₂O₃ — 10wt% Ti₃AlC₂ from planetary mill; **g)** Al₂O₃ — 15wt% Ti₃AlC₂ from attritor mill; **h)** Al₂O₃ — 15wt% Ti₃AlC₂ from horizontal mill; **i)** Al₂O₃ — 15wt% Ti₃AlC₂ from planetary mill; **j)** Al₂O₃ — 20wt% Ti₃AlC₂ from attritor mill; **k)** Al₂O₃ — 20wt% Ti₃AlC₂ from horizontal mill; **l)** Al₂O₃ — 20wt% Ti₃AlC₂ from planetary mill