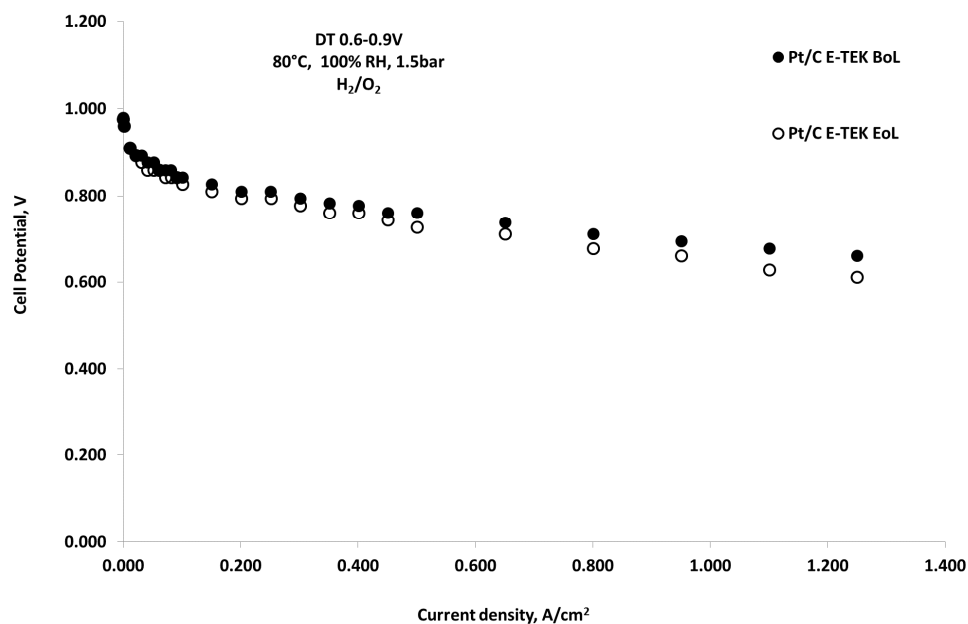


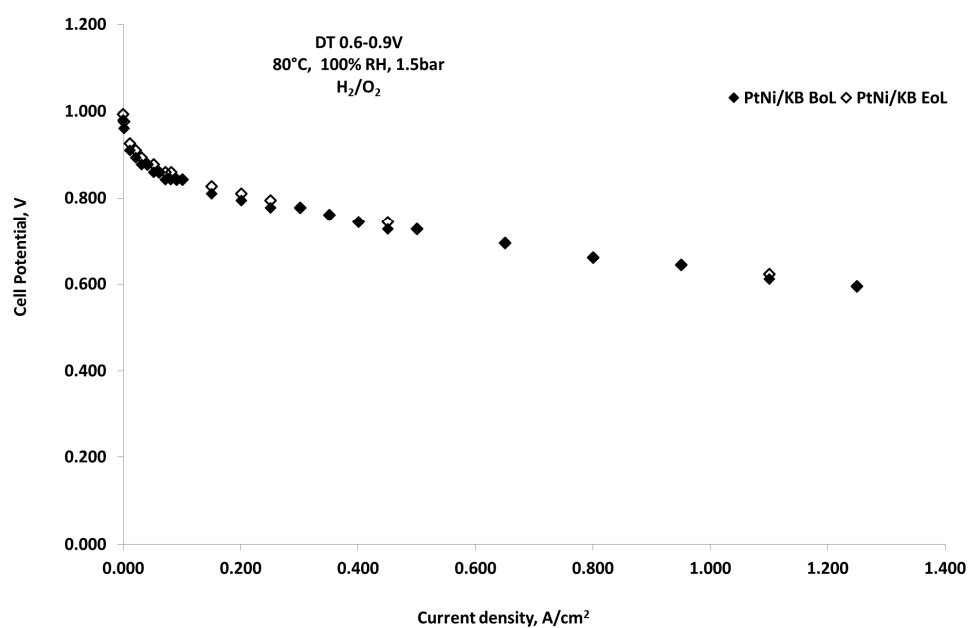
Supplementary information

# Towards Highly Performing and Stable PtNi Catalysts in Polymer Electrolyte Fuel Cells for Automotive Application

Sabrina C. Zignani, Vincenzo Baglio \*, David Sebastián, Ada Saccà, Irene Gatto and Antonino S. Aricò

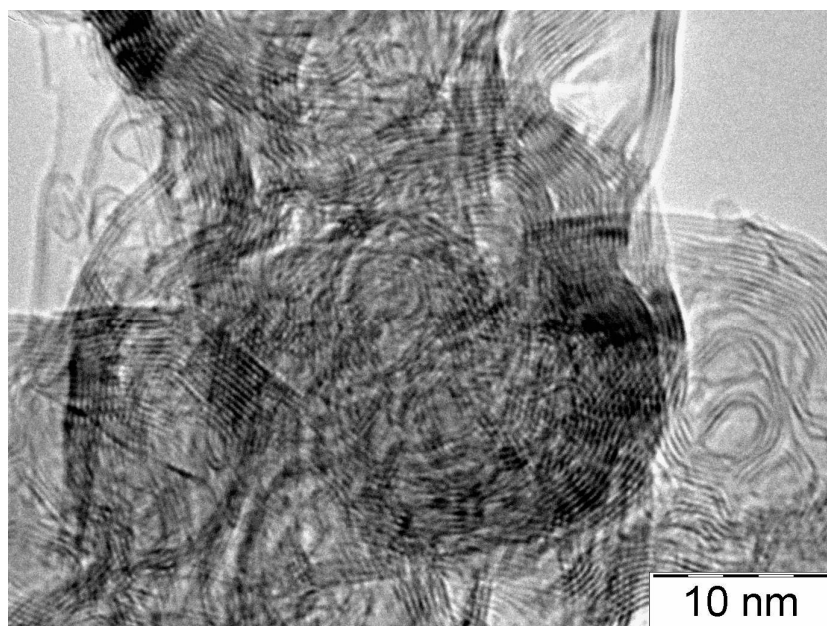


(a)



(b)

**Figure S1.** Polarization curves before and after the mild ADT (0.6–0.9 V cycling) for the MEAs based on carbon supported (a) Pt; and (b) Pt<sub>1</sub>Ni<sub>1</sub>, at 80°C, 100% R.H., 1.5 bars., H<sub>2</sub>/O<sub>2</sub>.



**Figure S2.** High-magnification TEM image of the PtNi/C catalyst after the severe ADT (0.6–1.2 V cycling).