

## **Supplementary Material**

### 1. Supplemental Tables

US EPA central air monitoring site locations in Birmingham, Alabama (Jefferson County and nearby suburbs) where pollutant data were obtained are given below.

Table S1: Locations of central air monitoring sites that provided data for the study

Sl. No	Pollutant	Sites 2019	Sites 2020
1	PM <sub>2.5</sub>	-North Birmingham -Mc Adory -Leeds -Wylam -Arkadelphia -Corner -Sloss Shuttlesworth	-North Birmingham -Mc Adory -Leeds -Wylam -Arkadelphia -Corner -Sloss Shuttlesworth
2	NO <sub>2</sub>	-North Birmingham -Arkadelphia	-North Birmingham -Arkadelphia
3	O <sub>3</sub>	-North Birmingham -McAdory -Fairfield -Leeds -Corner Terrant Elementary School -Helena	-North Birmingham -McAdory -Leeds -Corner -Terrant Elementary School -Helena
4	CO	-North Birmingham -Fairfield -Arkadelphia	-North Birmingham -Fairfield -Arkadelphia
5	SO <sub>2</sub>	-North Birmingham -Fairfield	-North Birmingham -Fairfield

## 2. Supplemental Figures

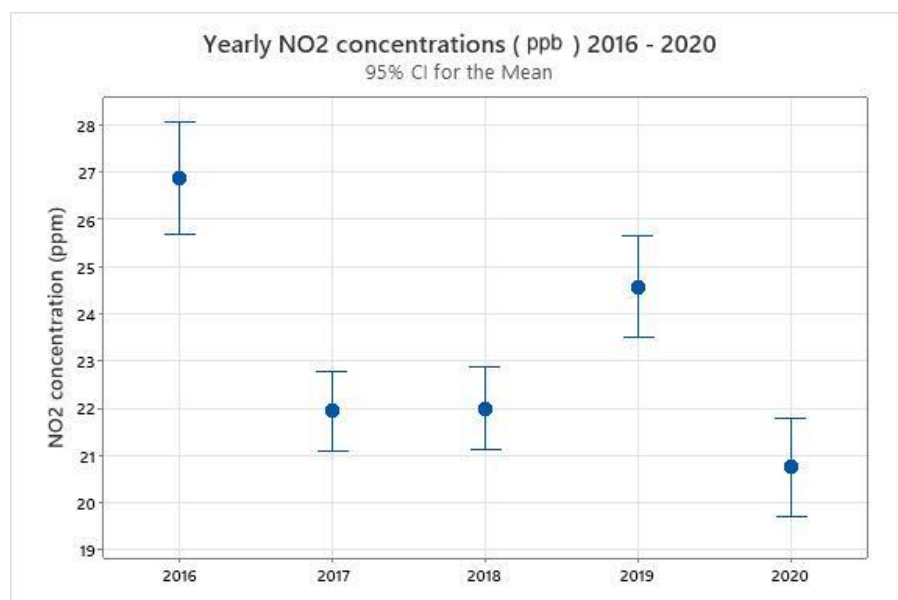


Figure S1: Annual mean NO<sub>2</sub> concentrations (ppb) from year 2016 – 2020. Error bars represent 95% confidence interval of the mean

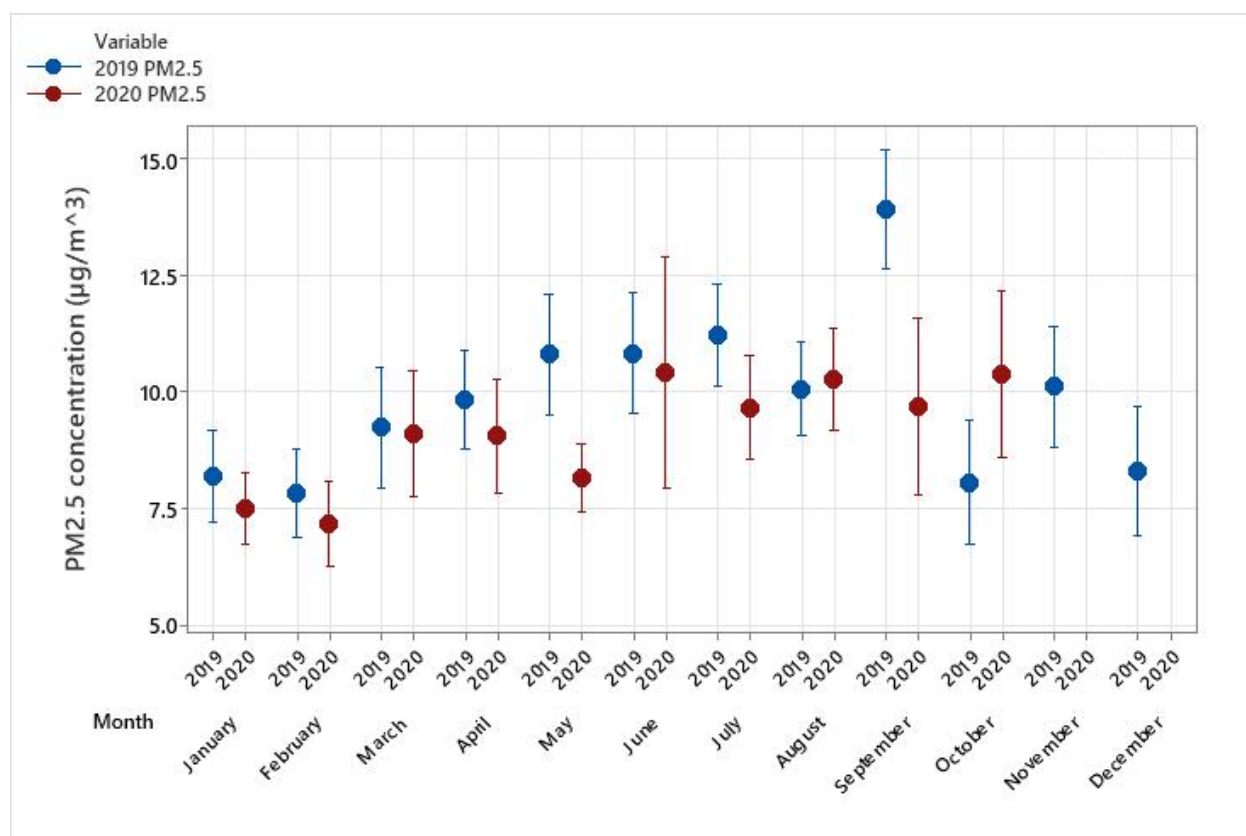


Figure S2: Monthly mean PM<sub>2.5</sub> concentrations (µg/m<sup>3</sup>) in years 2019 and 2020. Error bars represent 95% confidence interval of the mean