

Supplementary Material

The association between the burden of PM_{2.5}-related neonatal preterm birth and Socio-demographic index from 1990 to 2019: a global burden study

Zeyu Tang¹, Jinzhu Jia^{1,2*}

¹Department of Biostatistics, School of Public Health, Peking University, No.38, Xueyuan Road, Beijing 100871, China

²Center for Statistical Science, Peking University, 5 Summer Palace Road, Beijing 100871, China

* Correspondence: jzjia@math.pku.edu.cn.

Part 1 (Figures S1–S21): Trends in the age-standardized mortality rate of PM_{2.5}-related preterm birth in 21 regions from 1990 to 2019.

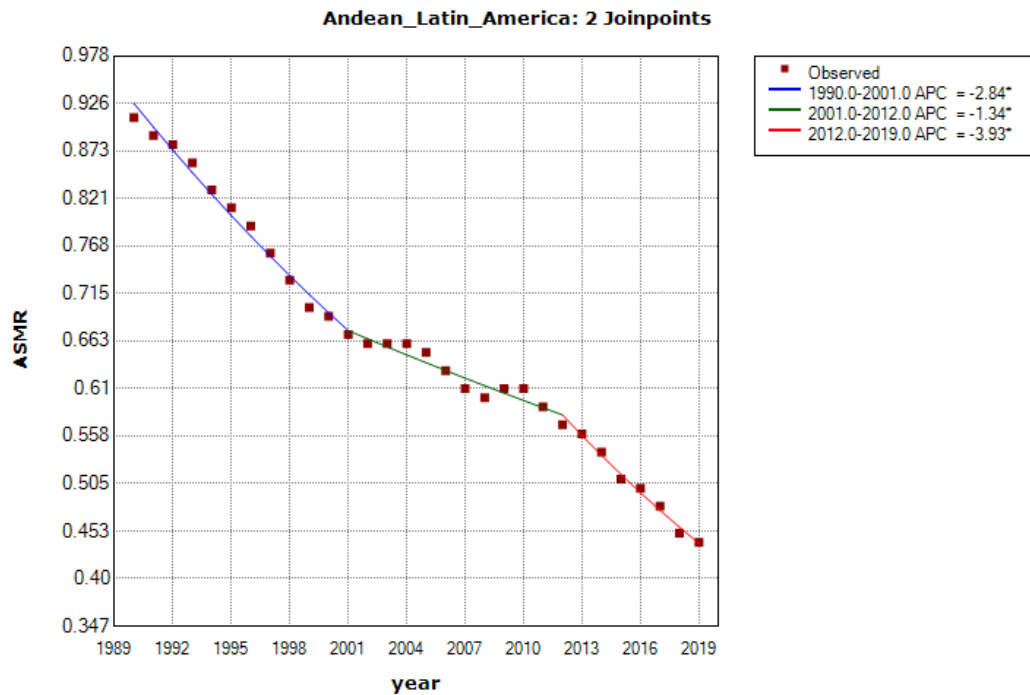


Figure S1 Trends in the age-standardized mortality rate (ASMR, per 100,000 population) of PM_{2.5}-related preterm birth in Andean Latin America from 1990 to 2019. * $P < 0.05$

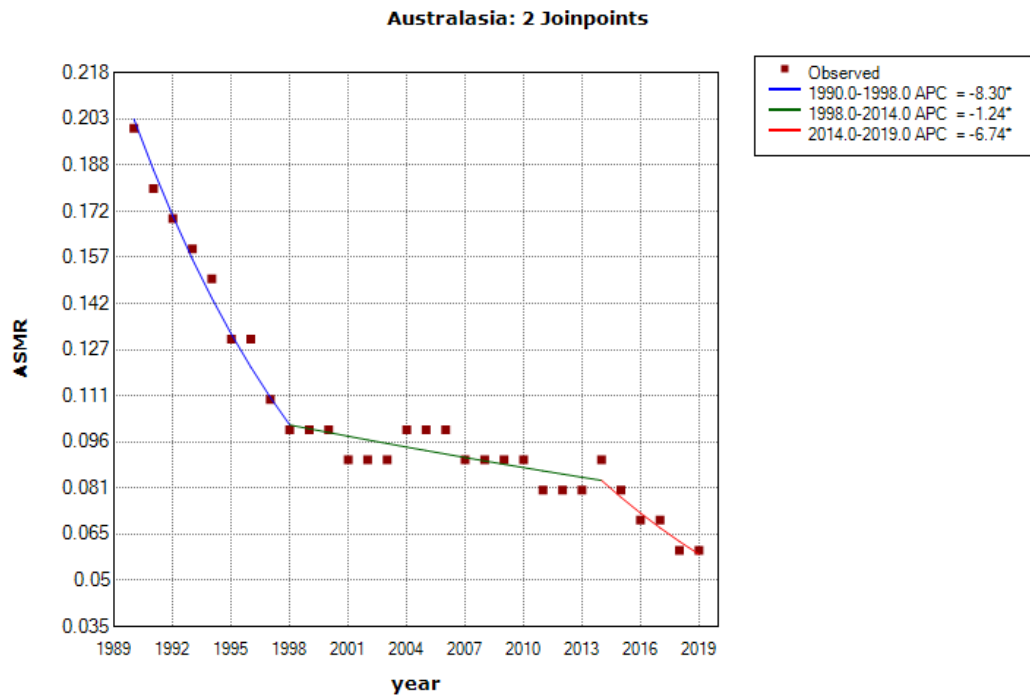


Figure S2 Trends in the age-standardized mortality rate (ASMR, per 100,000 population) of PM_{2.5}-related preterm birth in Australasia from 1990 to 2019. * $P < 0.05$

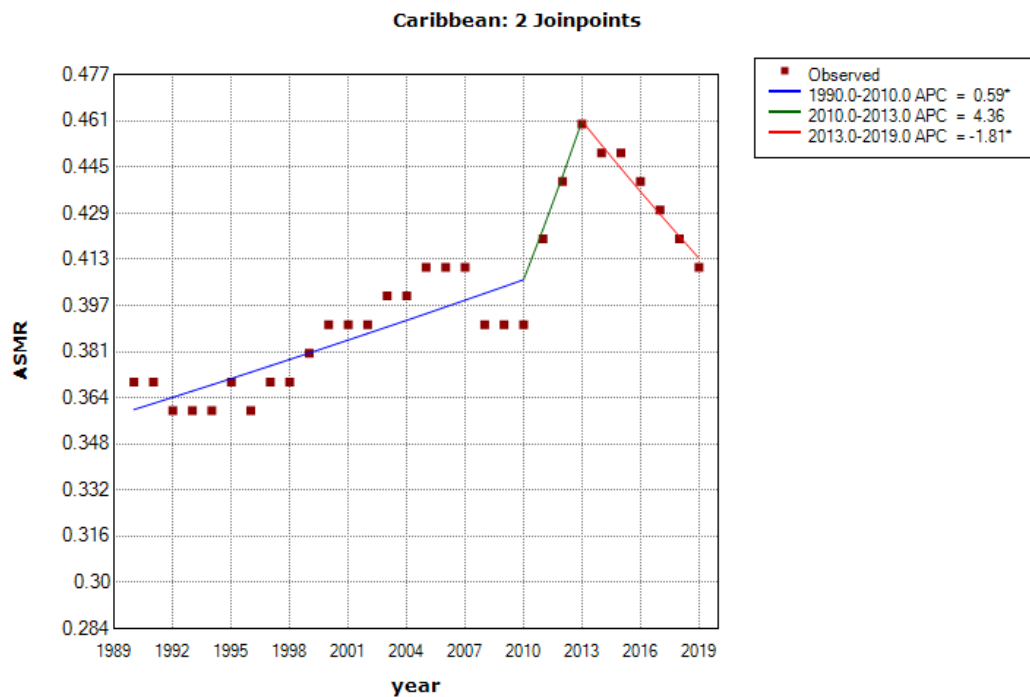


Figure S3 Trends in the age-standardized mortality rate (ASMR, per 100,000 population) of PM_{2.5}-related preterm birth in Caribbean from 1990 to 2019. * $P < 0.05$

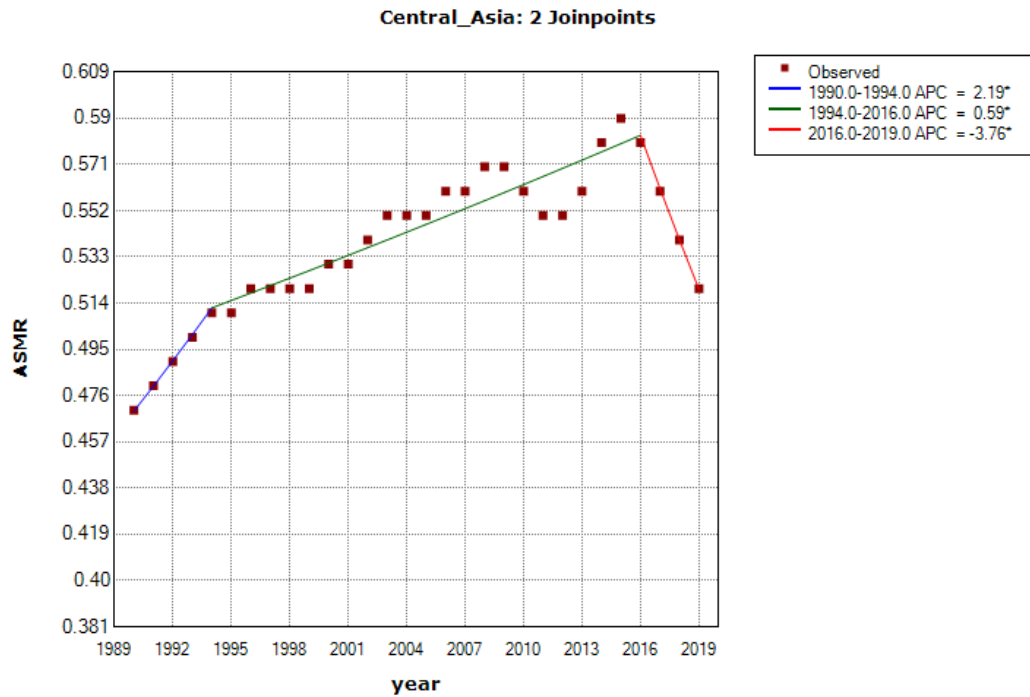


Figure S4 Trends in the age-standardized mortality rate (ASMR, per 100,000 population) of PM_{2.5}-related preterm birth in Central Asia from 1990 to 2019. * $P < 0.05$

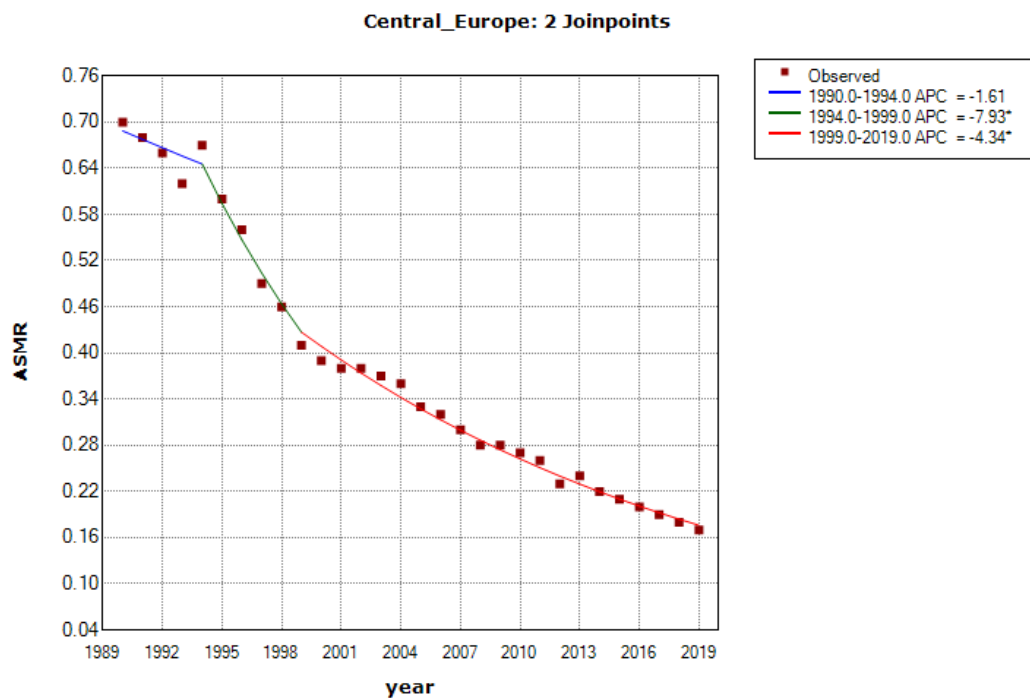


Figure S5 Trends in the age-standardized mortality rate (ASMR, per 100,000 population) of PM_{2.5}-related preterm birth in Central Europe from 1990 to 2019. * $P < 0.05$

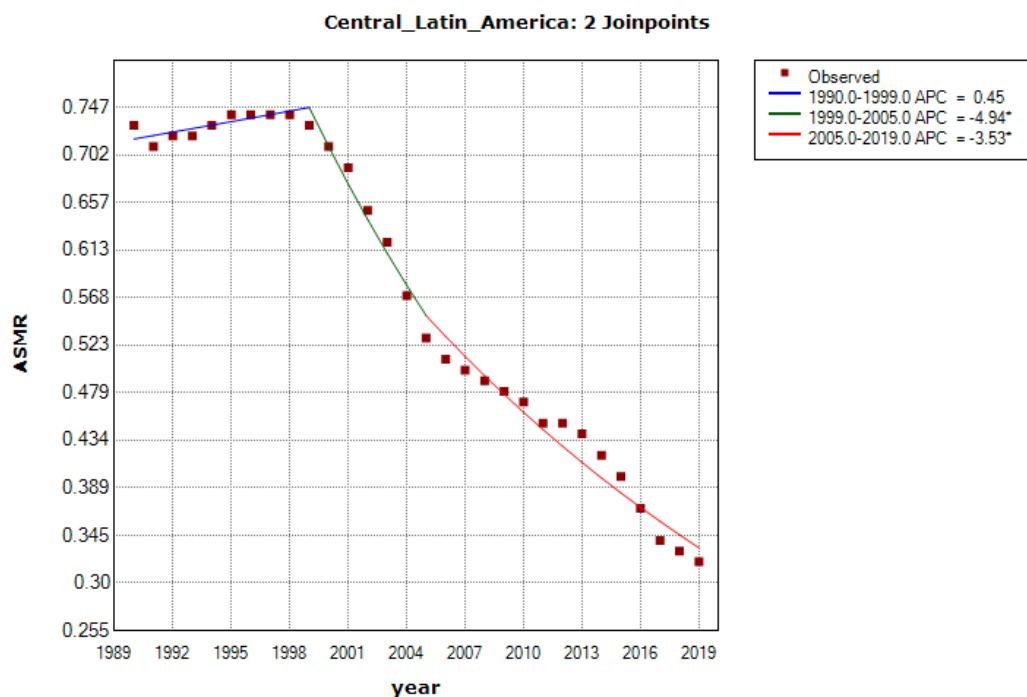


Figure S6 Trends in the age-standardized mortality rate (ASMR, per 100,000 population) of PM_{2.5}-related preterm birth in Central Latin America from 1990 to 2019. * $P < 0.05$

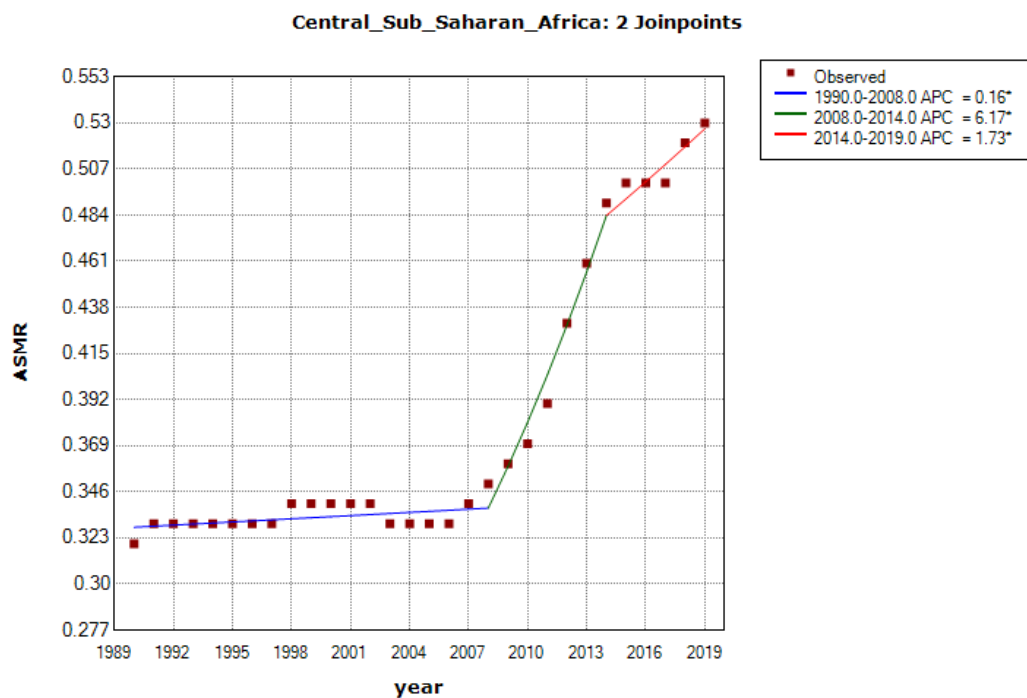


Figure S7 Trends in the age-standardized mortality rate (ASMR, per 100,000 population) of PM_{2.5}-related preterm birth in Central Sub Saharan Africa from 1990 to 2019. * $P < 0.05$

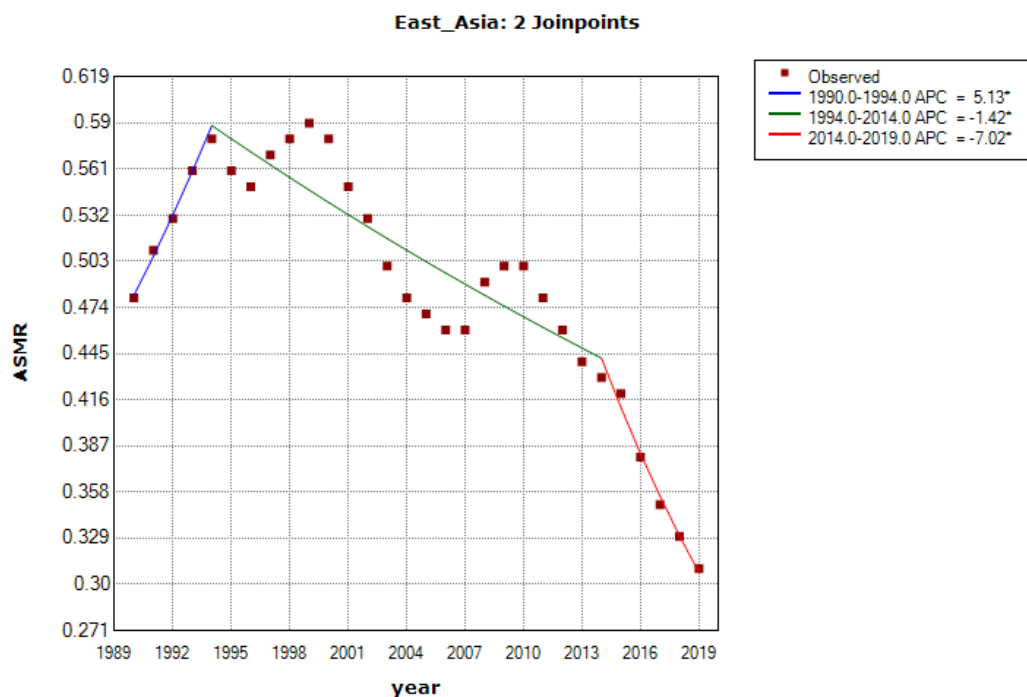


Figure S8 Trends in the age-standardized mortality rate (ASMR, per 100,000 population) of PM_{2.5}-related preterm birth in East Asia from 1990 to 2019. * $P < 0.05$

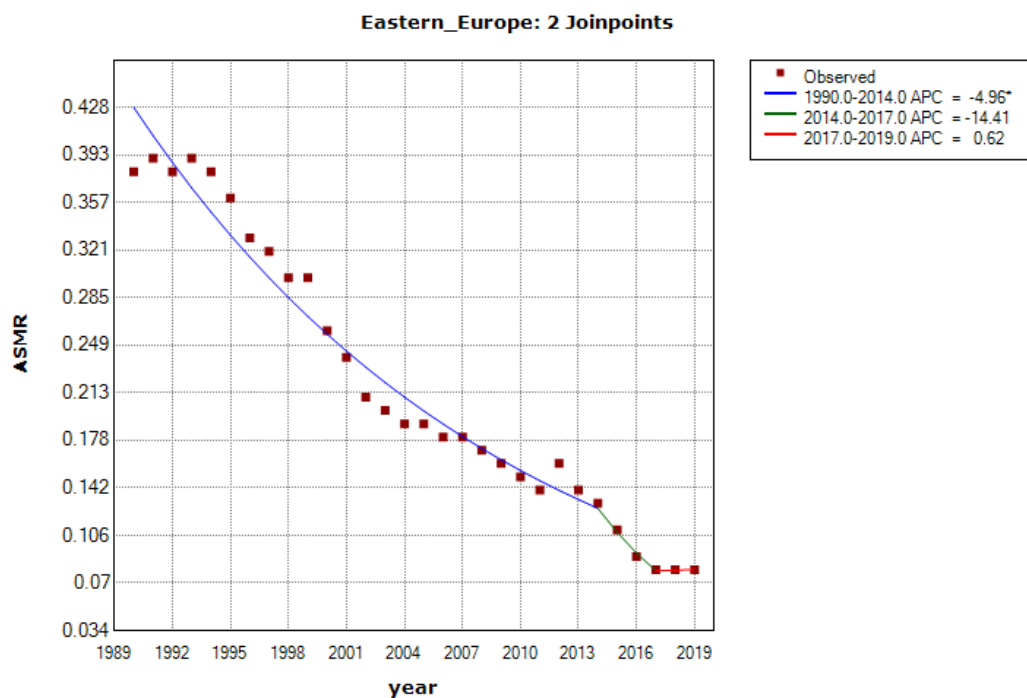


Figure S9 Trends in the age-standardized mortality rate (ASMR, per 100,000 population) of PM_{2.5}-related preterm birth in Eastern Europe from 1990 to 2019. * $P < 0.05$

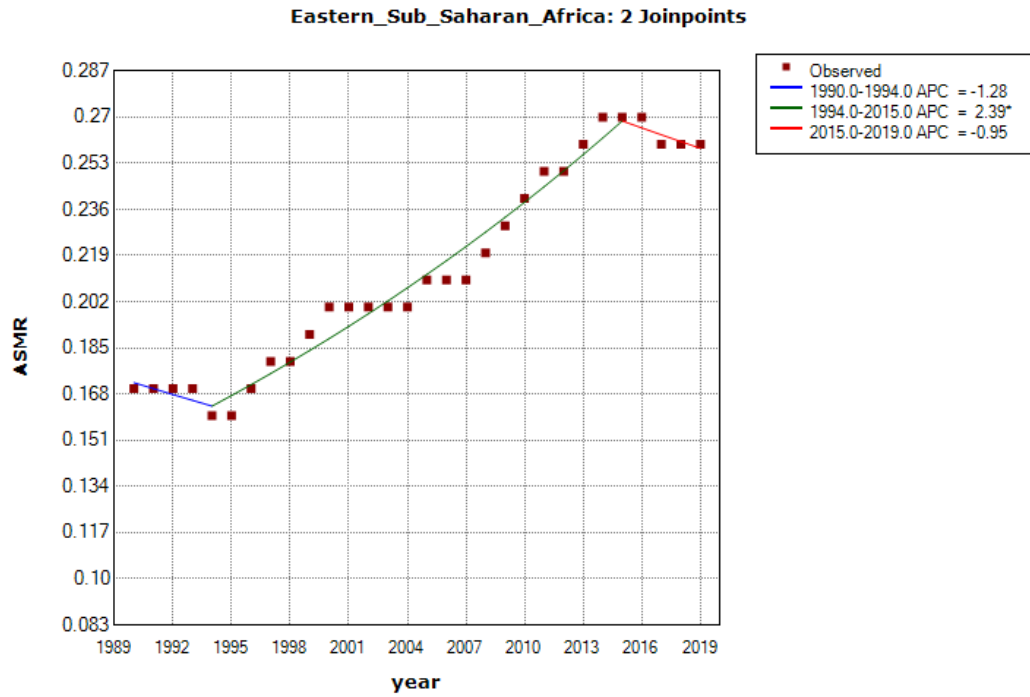


Figure S10 Trends in the age-standardized mortality rate (ASMR, per 100,000 population) of PM_{2.5}-related preterm birth in Eastern Sub Saharan Africa from 1990 to 2019. * $P < 0.05$

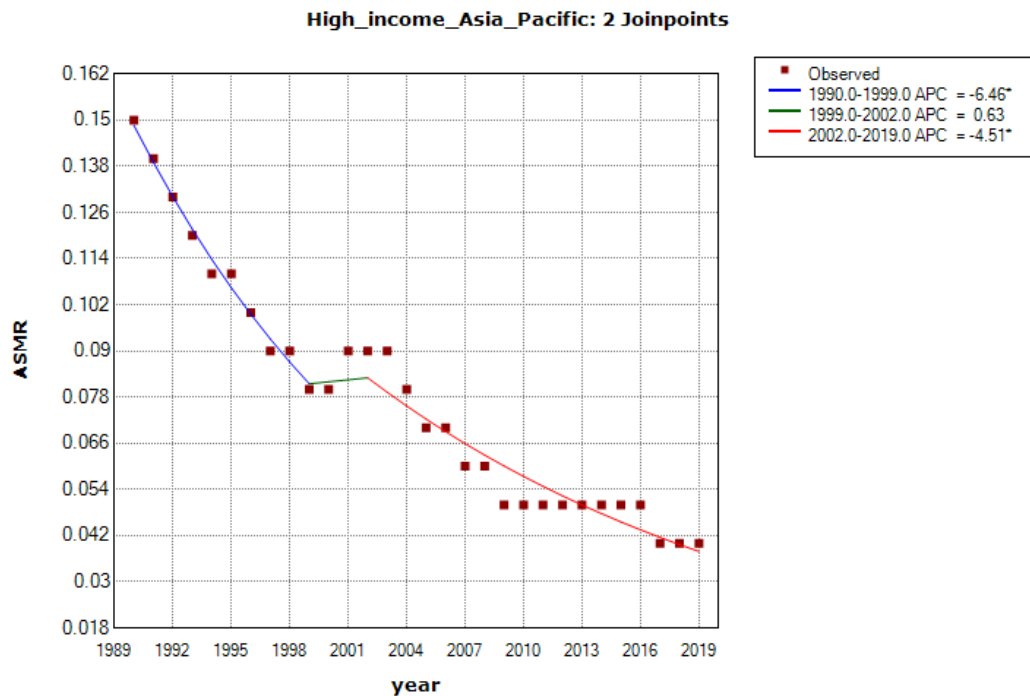


Figure S11 Trends in the age-standardized mortality rate (ASMR, per 100,000 population) of PM_{2.5}-related preterm birth in High income Asia Pacific from 1990 to 2019. * $P < 0.05$

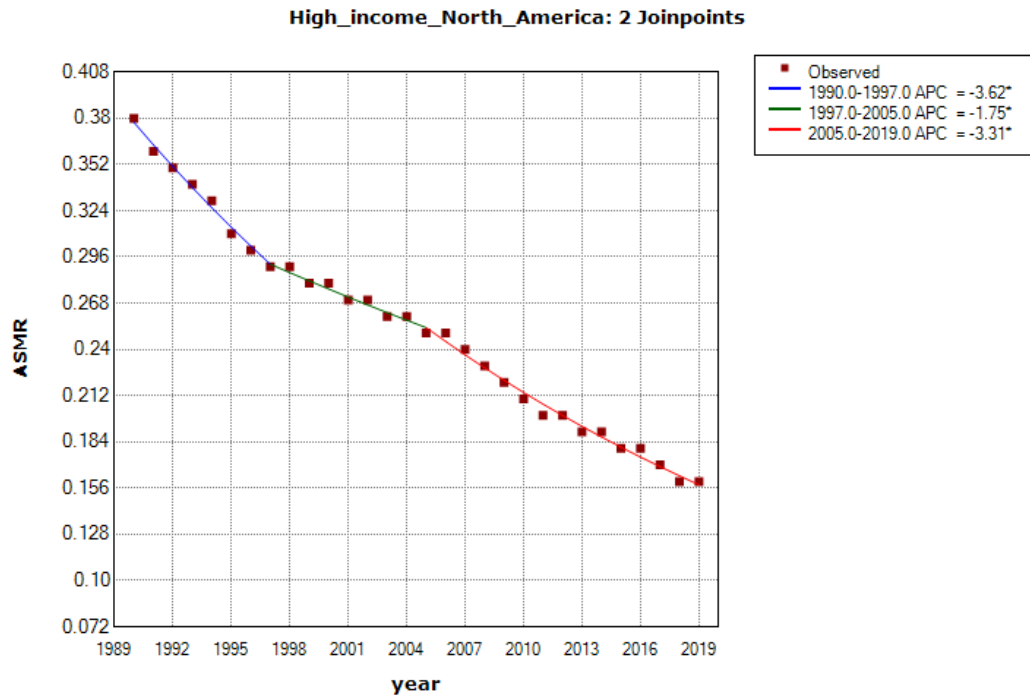


Figure S12 Trends in the age-standardized mortality rate (ASMR, per 100,000 population) of PM_{2.5}-related preterm birth in High income North America from 1990 to 2019. * $P < 0.05$

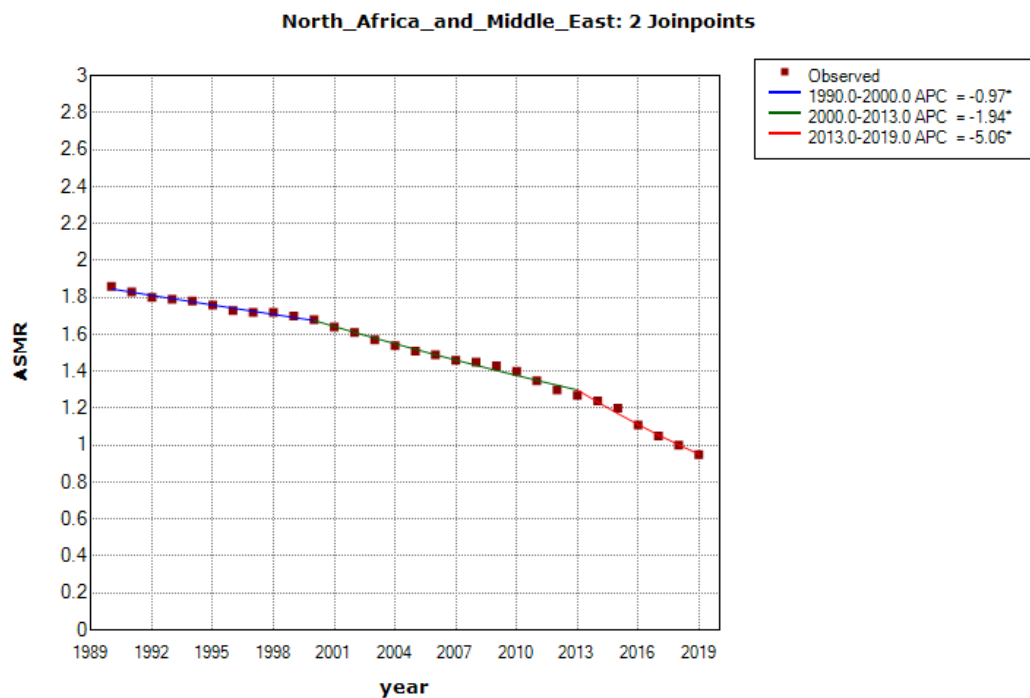


Figure S13 Trends in the age-standardized mortality rate (ASMR, per 100,000 population) of PM_{2.5}-related preterm birth in North Africa and Middle East from 1990 to 2019. * $P < 0.05$

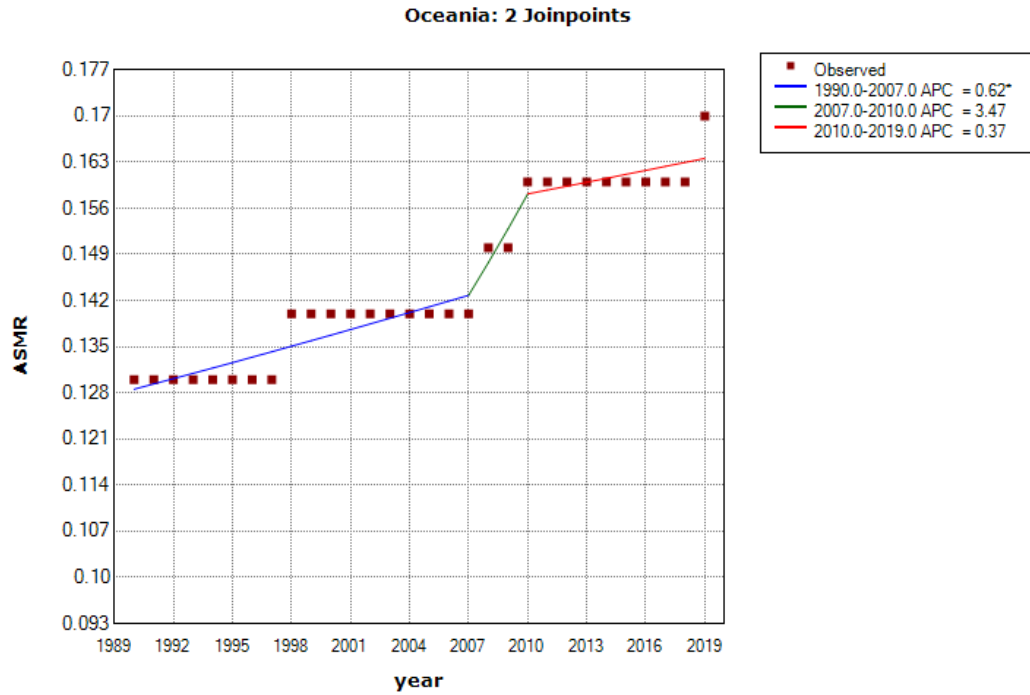


Figure S14 Trends in the age-standardized mortality rate (ASMR, per 100,000 population) of PM_{2.5}-related preterm birth in Oceania from 1990 to 2019. * $P < 0.05$

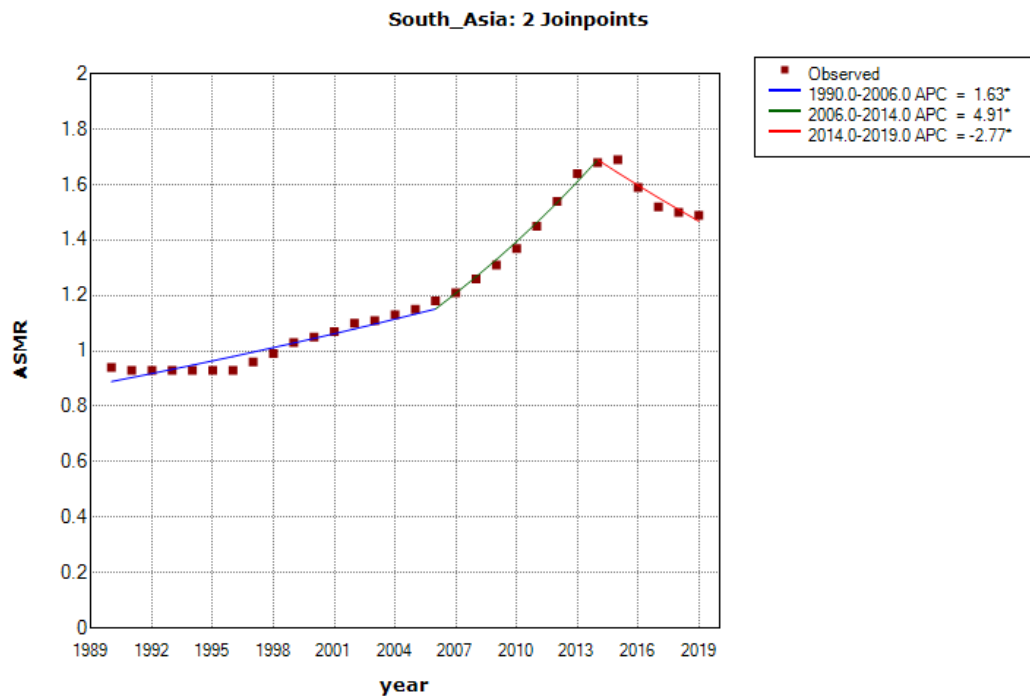


Figure S15 Trends in the age-standardized mortality rate (ASMR, per 100,000 population) of PM_{2.5}-related preterm birth in South Asia from 1990 to 2019. * $P < 0.05$

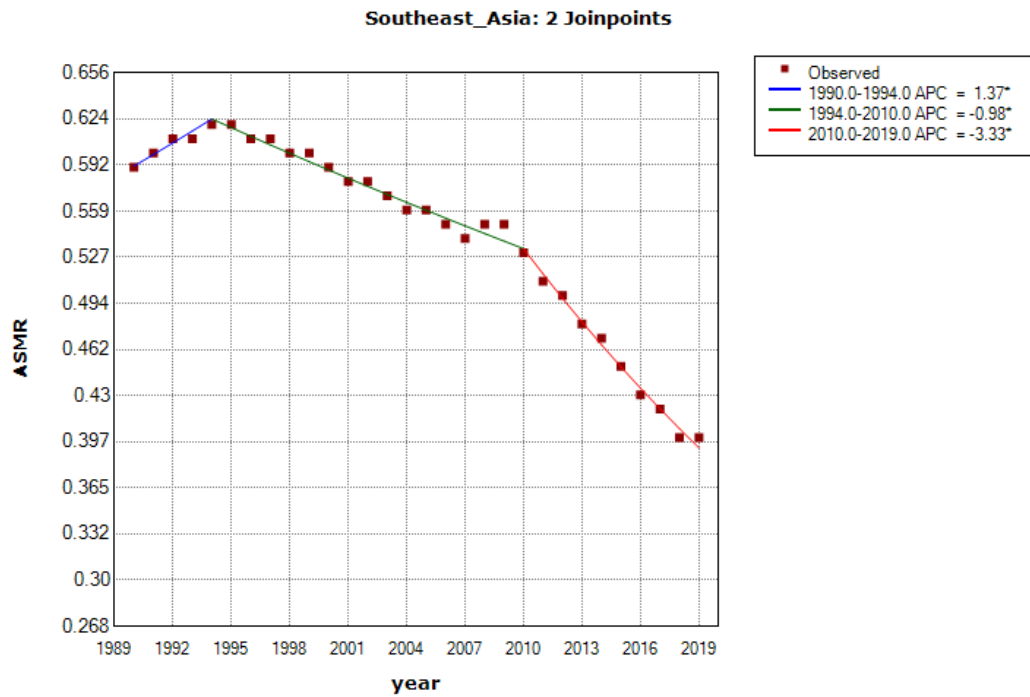


Figure S16 Trends in the age-standardized mortality rate (ASMR, per 100,000 population) of PM_{2.5}-related preterm birth in Southeast Asia from 1990 to 2019. * $P < 0.05$

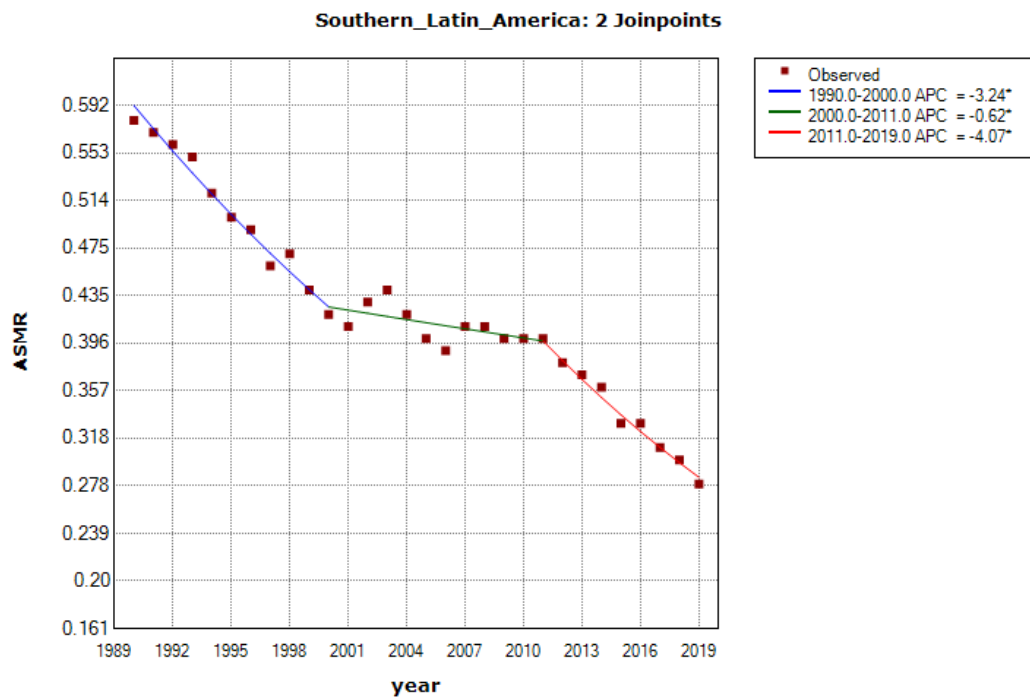


Figure S17 Trends in the age-standardized mortality rate (ASMR, per 100,000 population) of PM_{2.5}-related preterm birth in Southern Latin America from 1990 to 2019. * $P < 0.05$

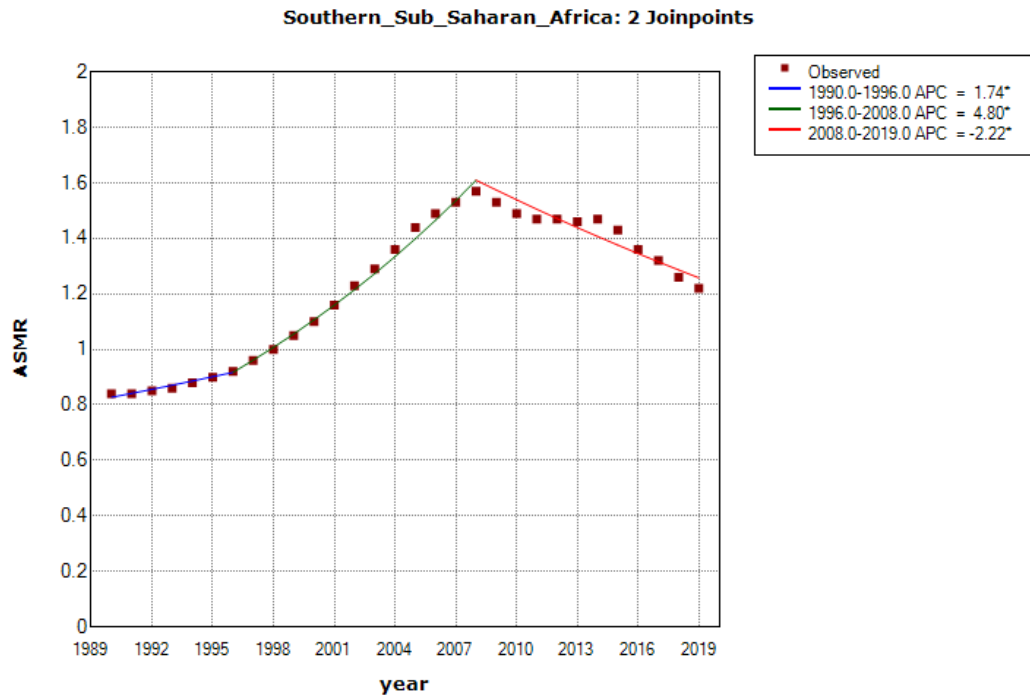


Figure S18 Trends in the age-standardized mortality rate (ASMR, per 100,000 population) of PM_{2.5}-related preterm birth in Southern Sub Saharan Africa from 1990 to 2019. * $P < 0.05$

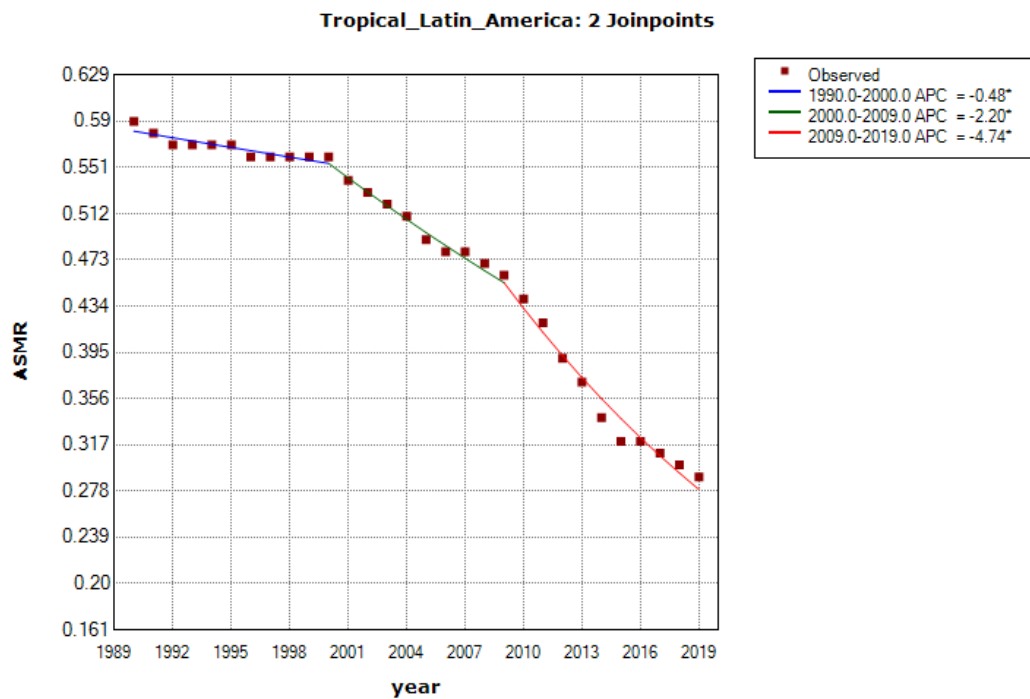


Figure S19 Trends in the age-standardized mortality rate (ASMR, per 100,000 population) of PM_{2.5}-related preterm birth in Tropical Latin America from 1990 to 2019. * $P < 0.05$

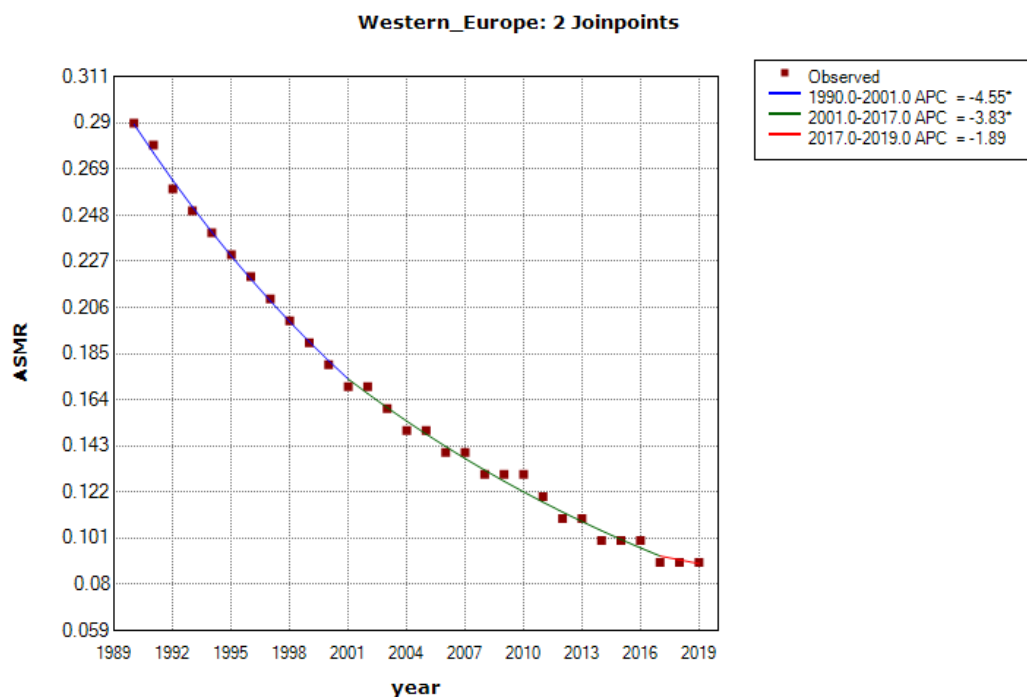


Figure S20 Trends in the age-standardized mortality rate (ASMR, per 100,000 population) of PM_{2.5}-related preterm birth in Western Europe from 1990 to 2019. * $P < 0.05$

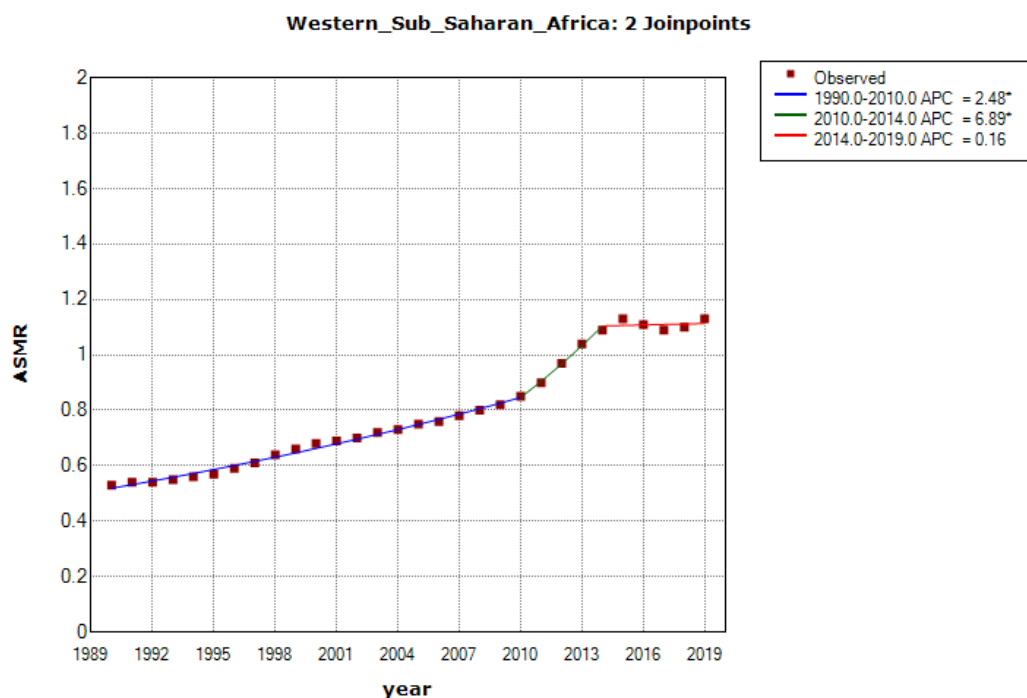


Figure S21 Trends in the age-standardized mortality rate (ASMR, per 100,000 population) of PM_{2.5}-related preterm birth in Western Sub Saharan Africa from 1990 to 2019. * $P < 0.05$

Part 2 (Fig.S22-S42): Trends in the age-standardized disability-adjusted life rate of PM_{2.5}-related preterm birth in 21 regions from 1990 to 2019.

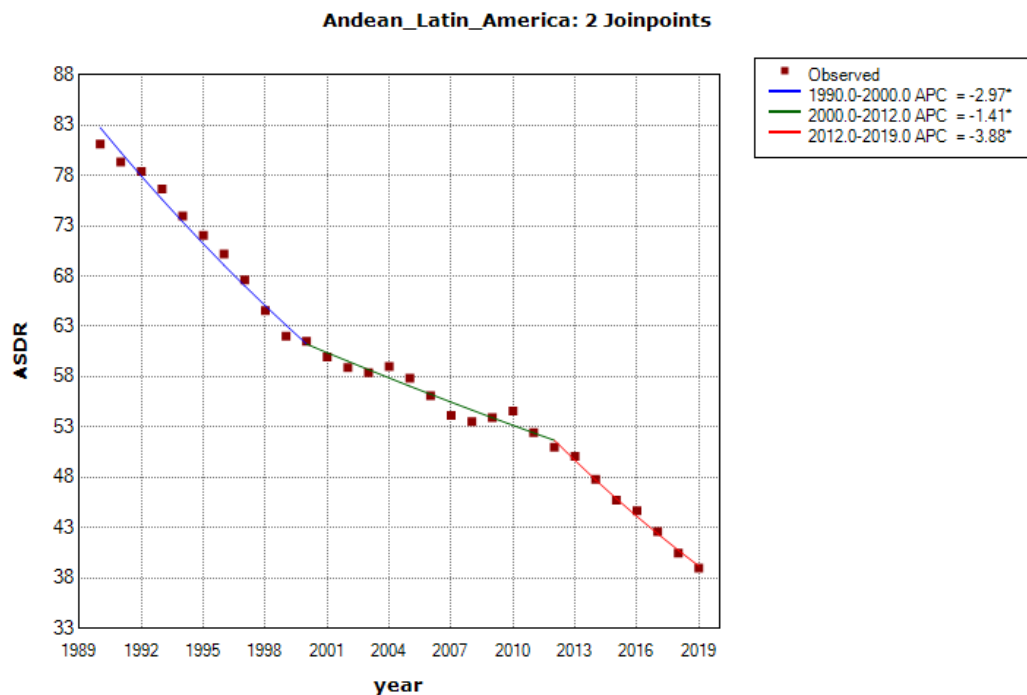


Figure S22 Trends in the age-standardized disability-adjusted life rate (ASDR, per 100,000 population) of PM_{2.5}-related preterm birth in Andean Latin America from 1990 to 2019. * $P < 0.05$

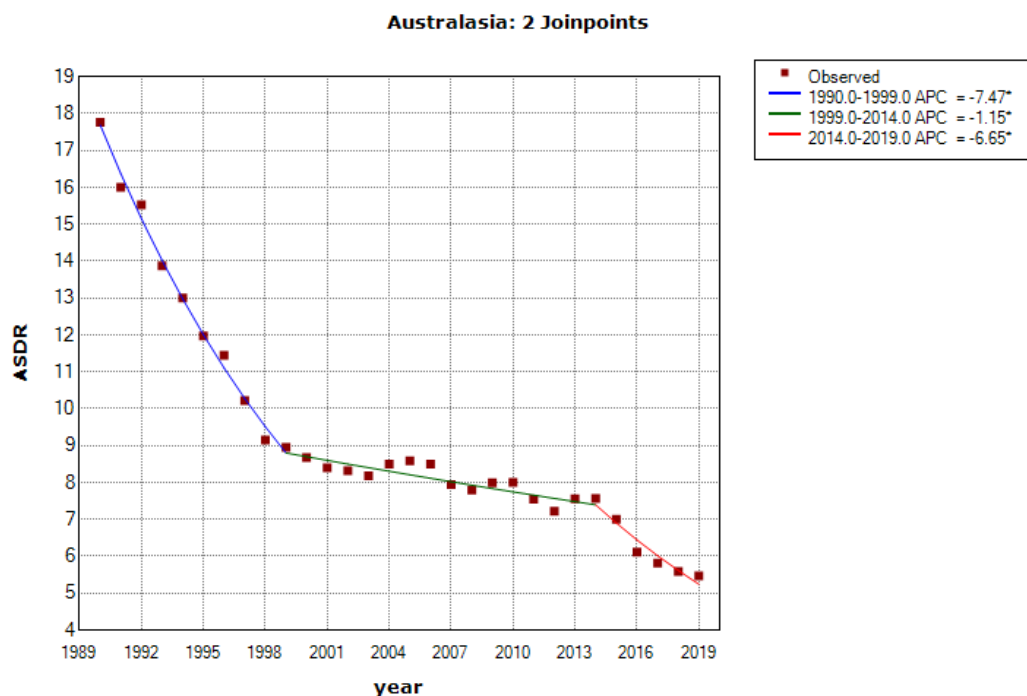


Figure S23 Trends in the age-standardized disability-adjusted life rate (ASDR, per 100,000 population) of PM_{2.5}-related preterm birth in Australasia from 1990 to 2019. * $P < 0.05$

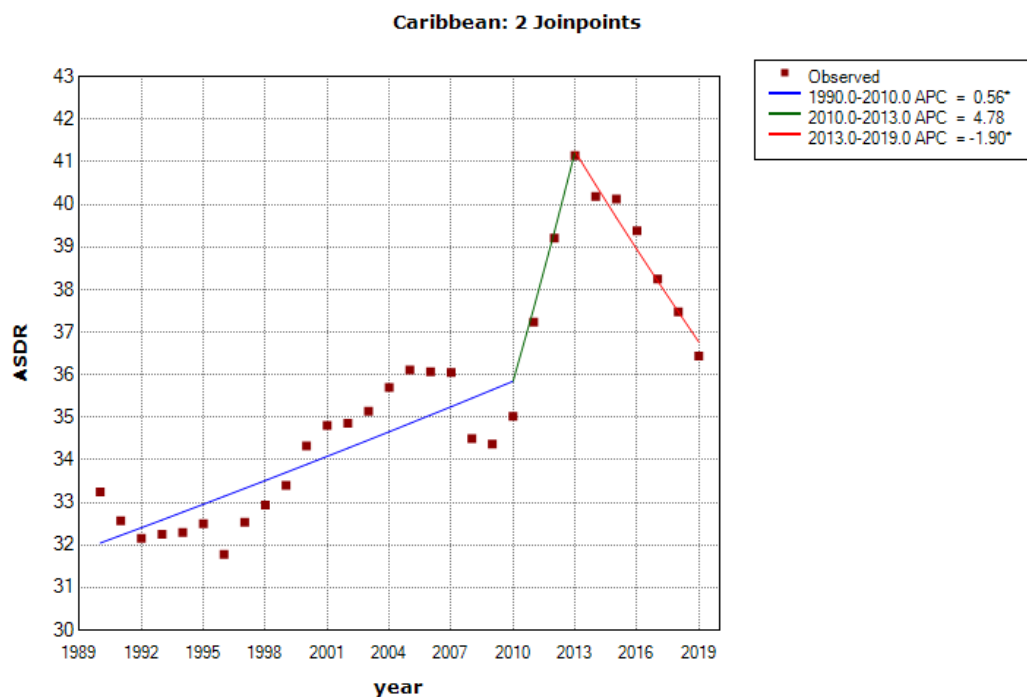


Figure S24 Trends in the age-standardized disability-adjusted life rate (ASDR, per 100,000 population) of PM_{2.5}-related preterm birth in Caribbean from 1990 to 2019. * $P < 0.05$

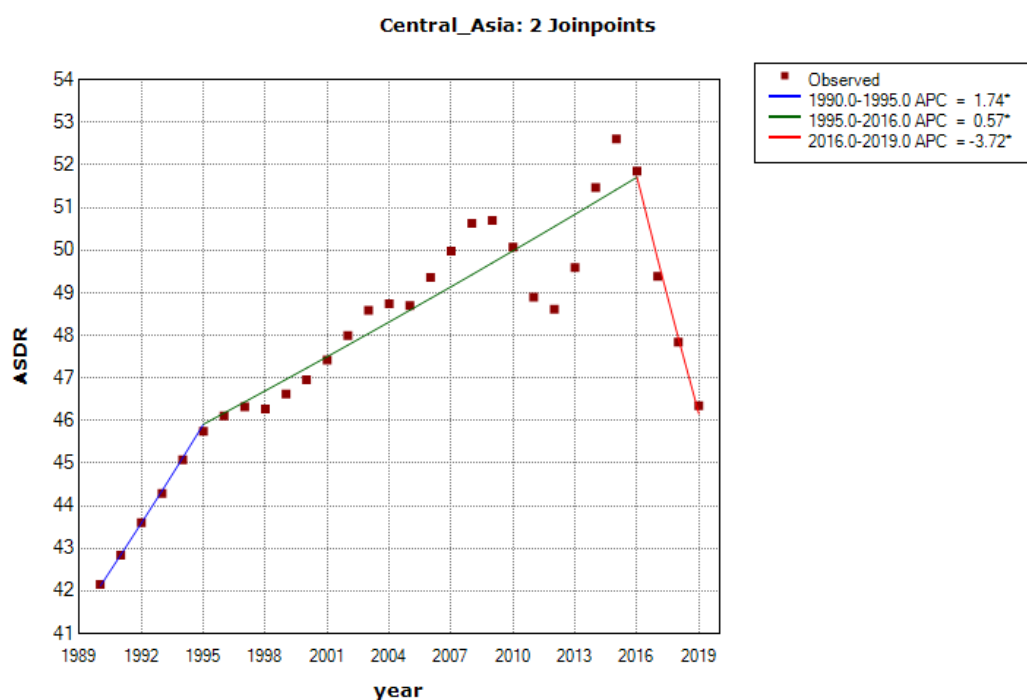


Figure S25 Trends in the age-standardized disability-adjusted life rate (ASDR, per 100,000 population) of PM_{2.5}-related preterm birth in Central Asia from 1990 to 2019. * $P < 0.05$

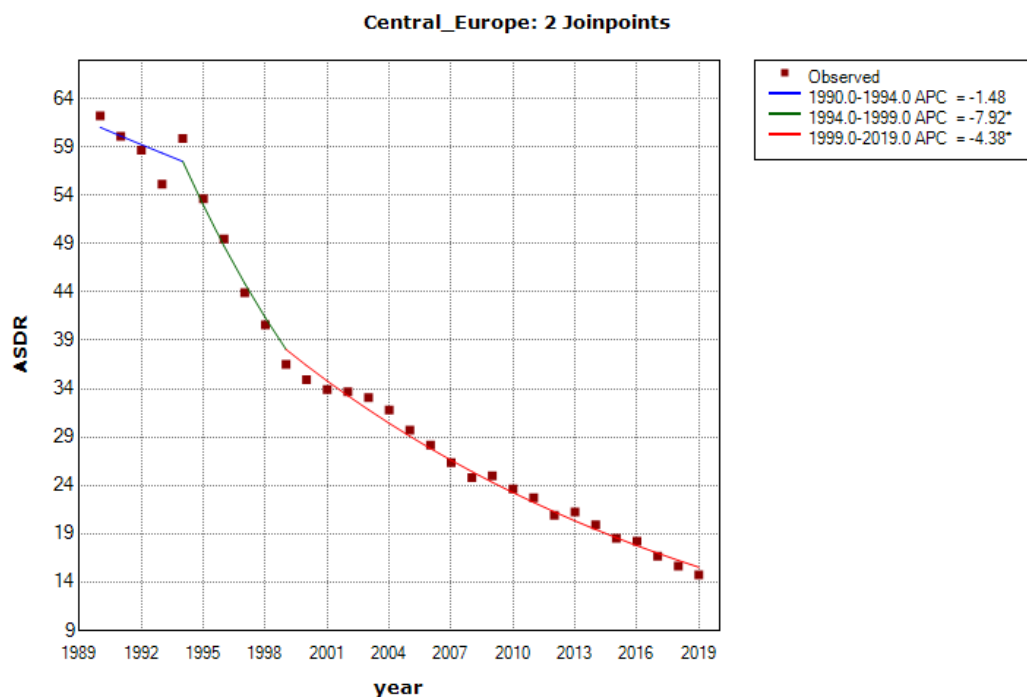


Figure S26 Trends in the age-standardized disability-adjusted life rate (ASDR, per 100,000 population) of PM_{2.5}-related preterm birth in Central Europe from 1990 to 2019. * $P < 0.05$

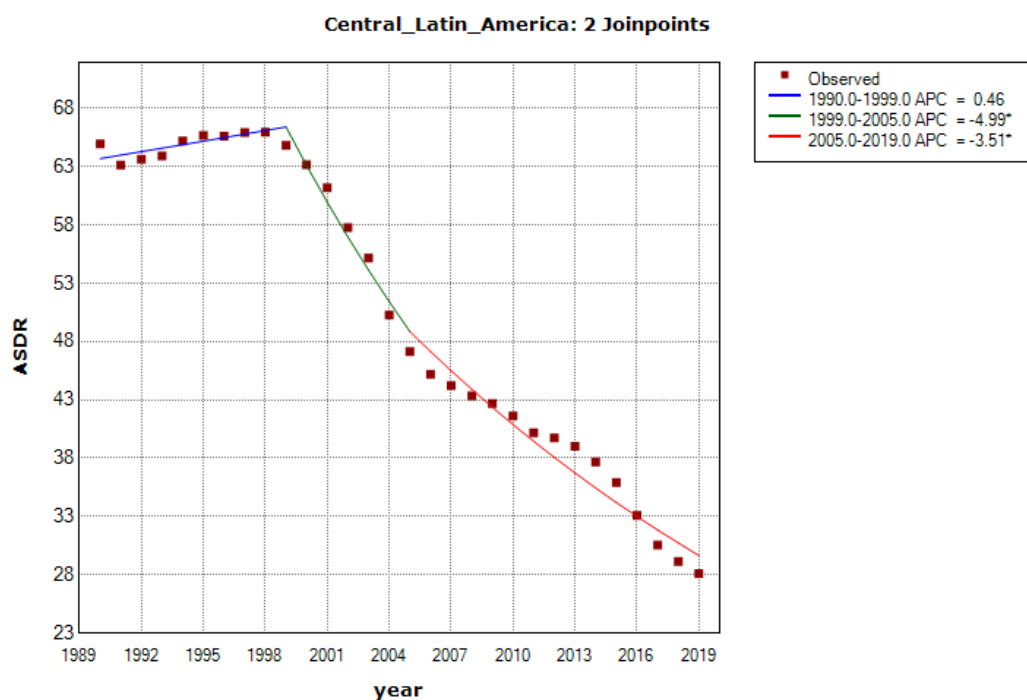


Figure S27 Trends in the age-standardized disability-adjusted life rate (ASDR, per 100,000 population) of PM_{2.5}-related preterm birth in Central Latin America from 1990 to 2019. * $P < 0.05$

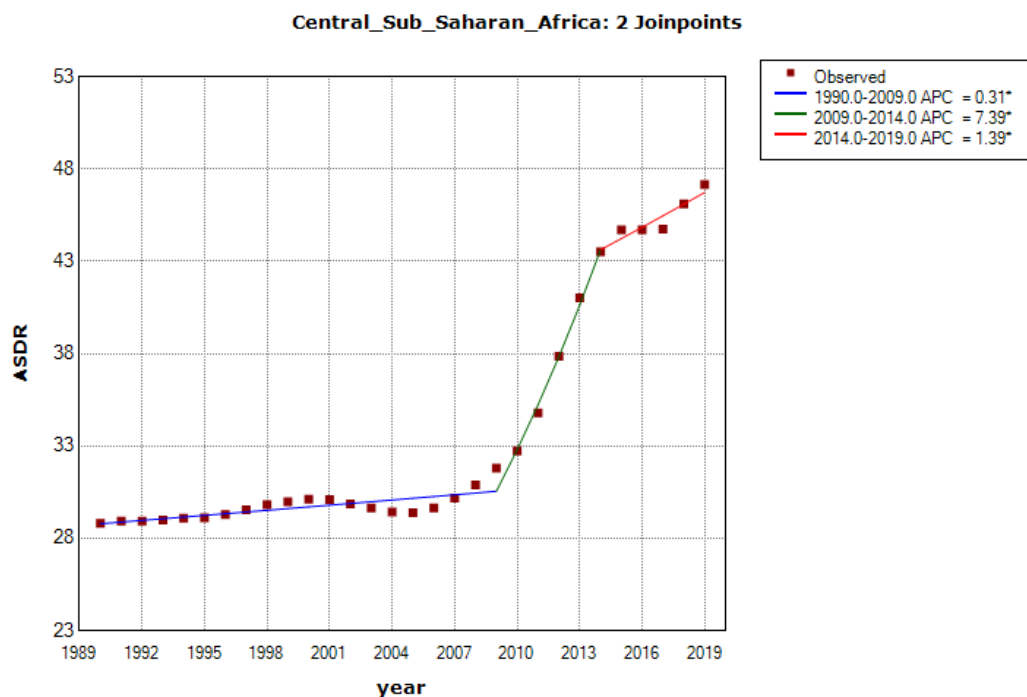


Figure S28 Trends in the age-standardized disability-adjusted life rate (ASDR, per 100,000 population) of PM_{2.5}-related preterm birth in Central Sub Saharan Africa from 1990 to 2019. * $P < 0.05$

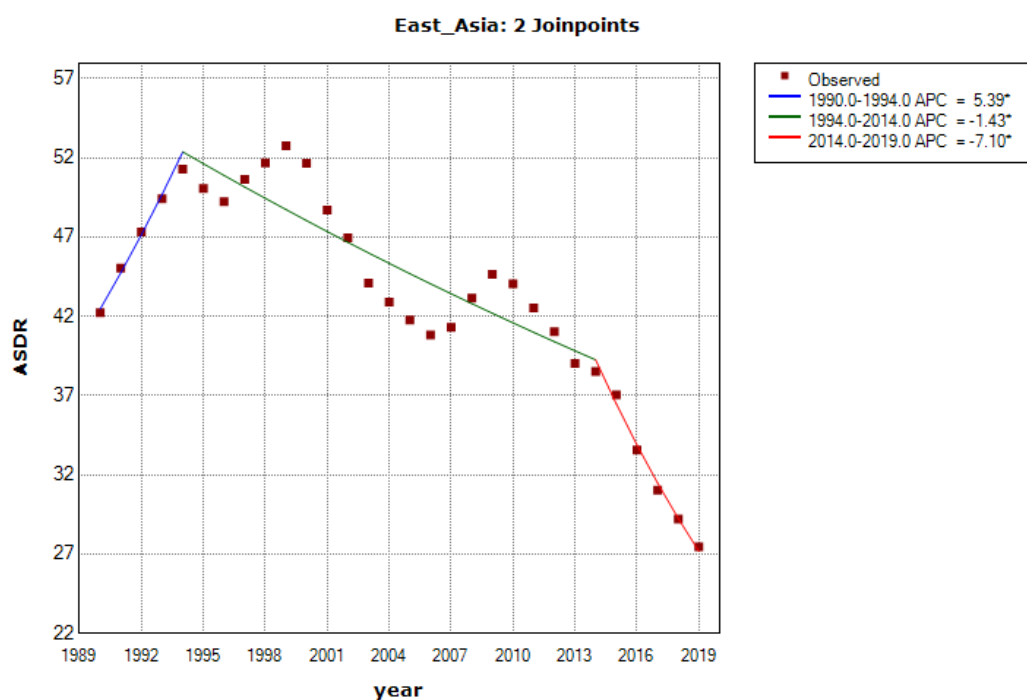


Figure S29 Trends in the age-standardized disability-adjusted life rate (ASDR, per 100,000 population) of PM_{2.5}-related preterm birth in East Asia from 1990 to 2019. * $P < 0.05$

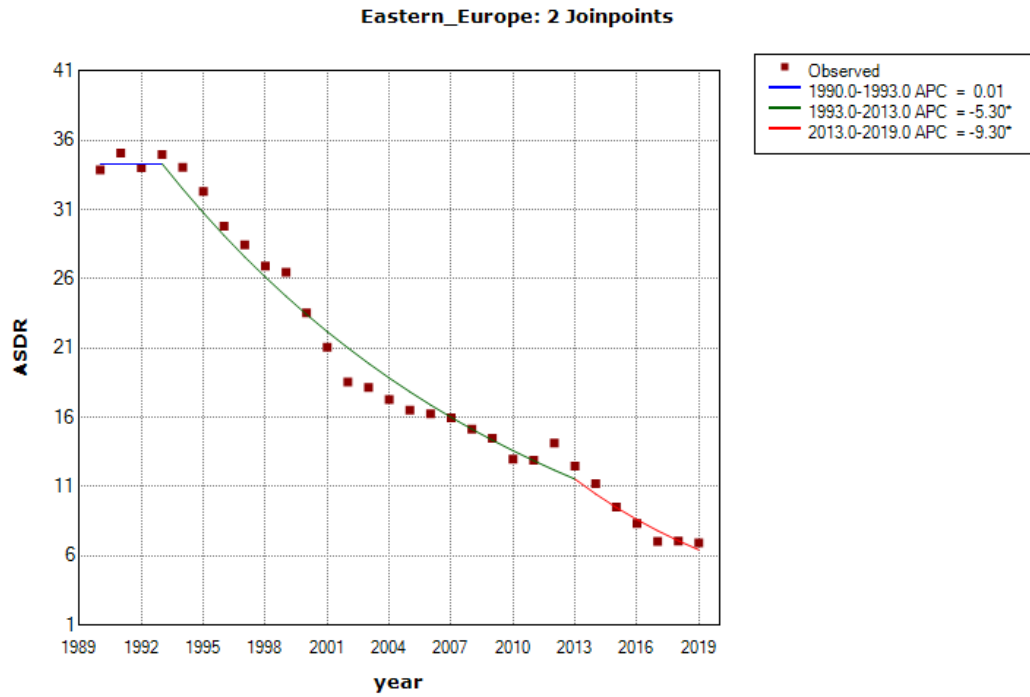


Figure S30 Trends in the age-standardized disability-adjusted life rate (ASDR, per 100,000 population) of PM_{2.5}-related preterm birth in Eastern Europe from 1990 to 2019. * $P<0.05$

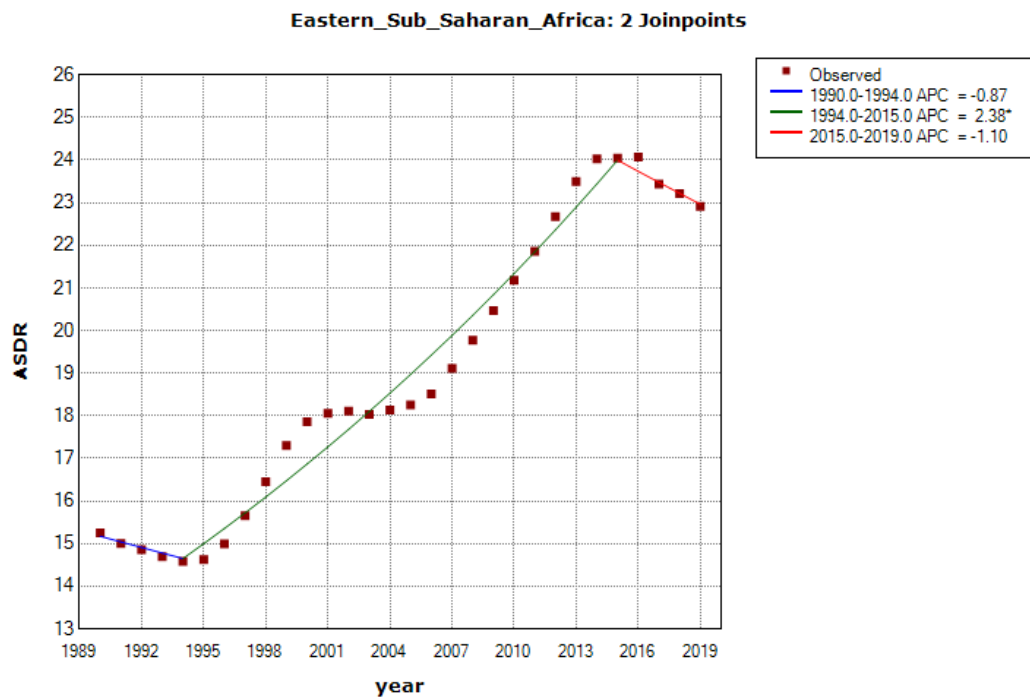


Figure S31 Trends in the age-standardized disability-adjusted life rate (ASDR, per 100,000 population) of PM_{2.5}-related preterm birth in Eastern Sub Saharan Africa from 1990 to 2019. * $P<0.05$

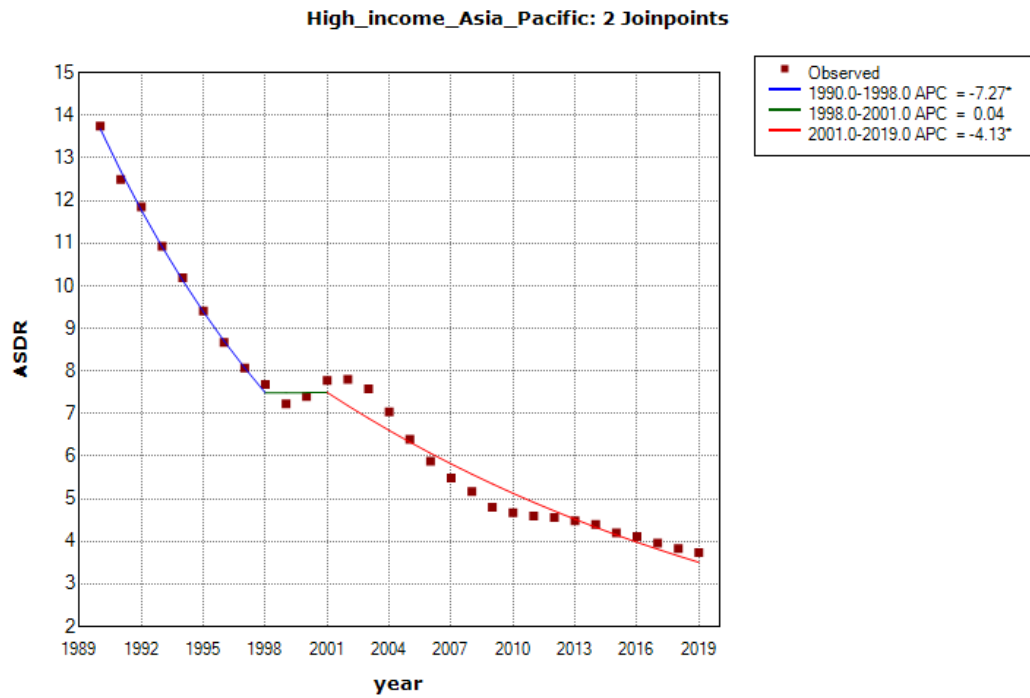


Figure S32 Trends in the age-standardized disability-adjusted life rate (ASDR, per 100,000 population) of PM_{2.5}-related preterm birth in High income Asia Pacific from 1990 to 2019. * $P < 0.05$

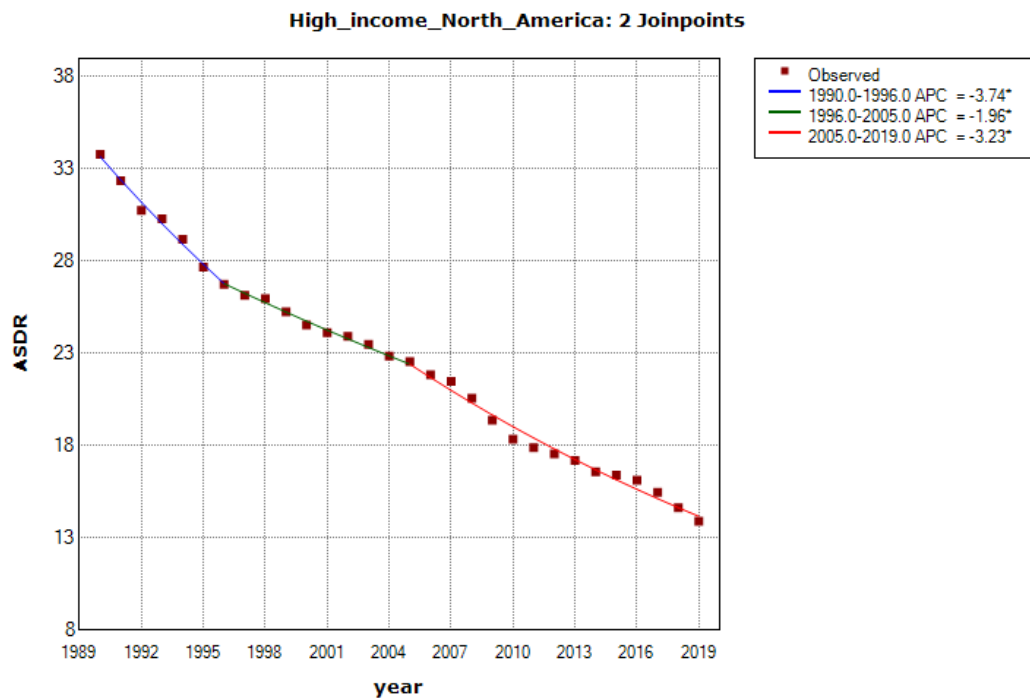


Figure S33 Trends in the age-standardized disability-adjusted life rate (ASDR, per 100,000 population) of PM_{2.5}-related preterm birth in High income North America from 1990 to 2019. * $P < 0.05$

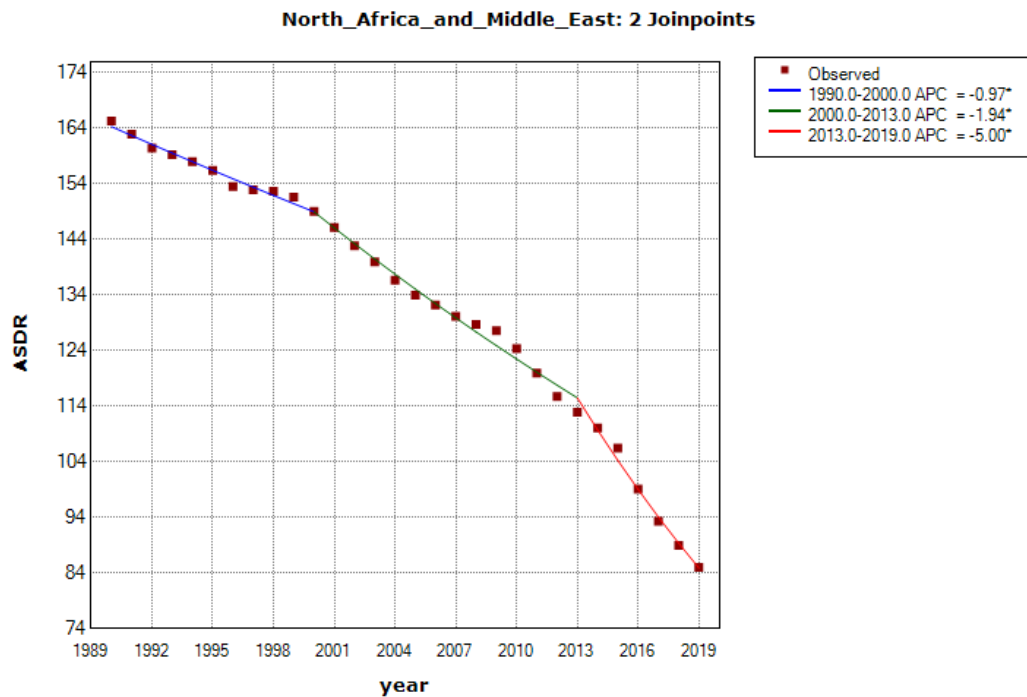


Figure S34 Trends in the age-standardized disability-adjusted life rate (ASDR, per 100,000 population) of PM_{2.5}-related preterm birth in North Africa and Middle East from 1990 to 2019. * $P < 0.05$

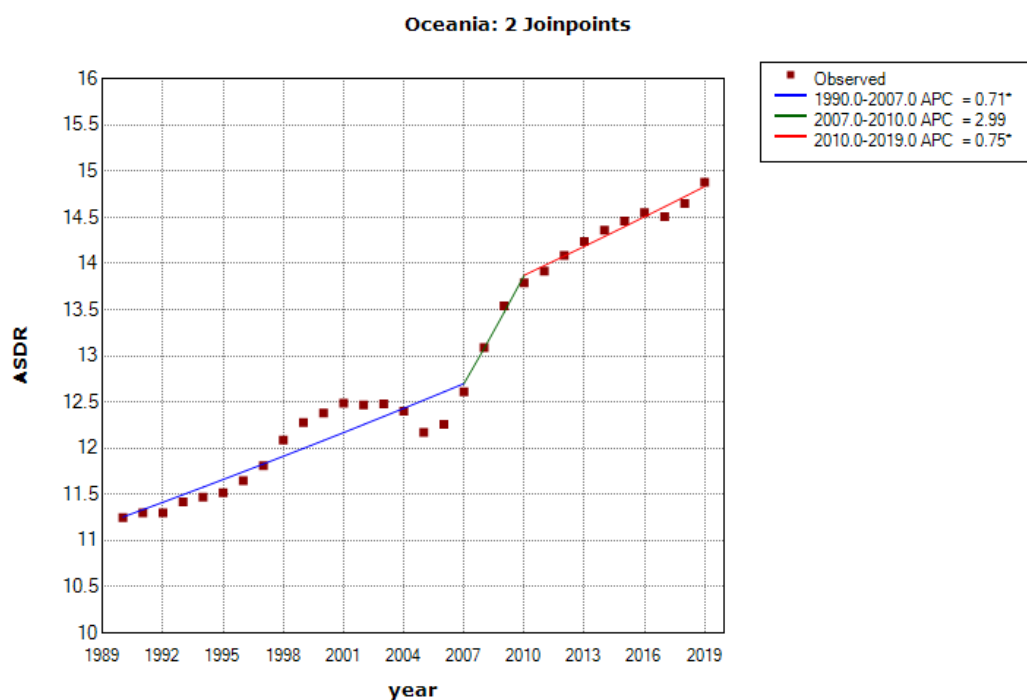


Figure S35 Trends in the age-standardized disability-adjusted life rate (ASDR, per 100,000 population) of PM_{2.5}-related preterm birth in Oceania from 1990 to 2019. * $P < 0.05$

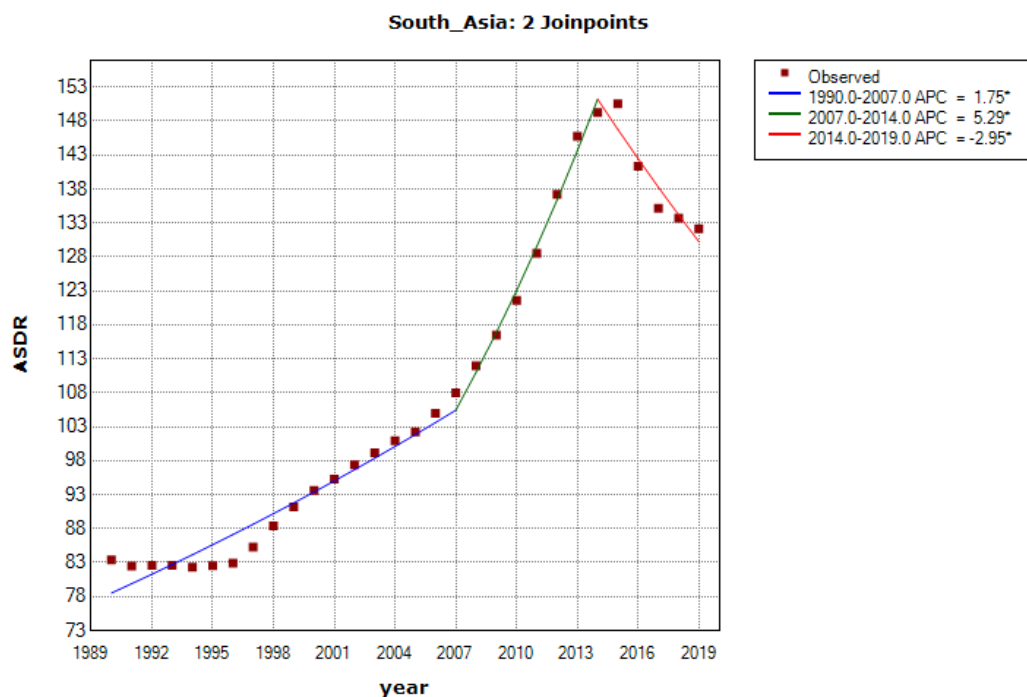


Figure S36 Trends in the age-standardized disability-adjusted life rate (ASDR, per 100,000 population) of PM_{2.5}-related preterm birth in South Asia from 1990 to 2019. * $P < 0.05$

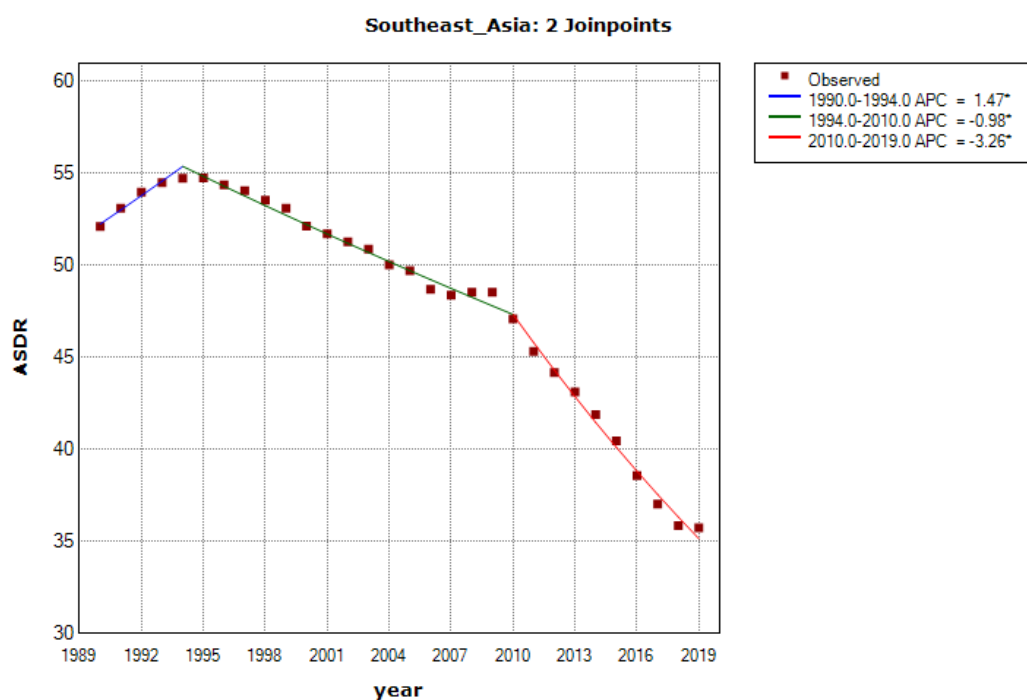


Figure S37 Trends in the age-standardized disability-adjusted life rate (ASDR, per 100,000 population) of PM_{2.5}-related preterm birth in Southeast Asia from 1990 to 2019. * $P < 0.05$

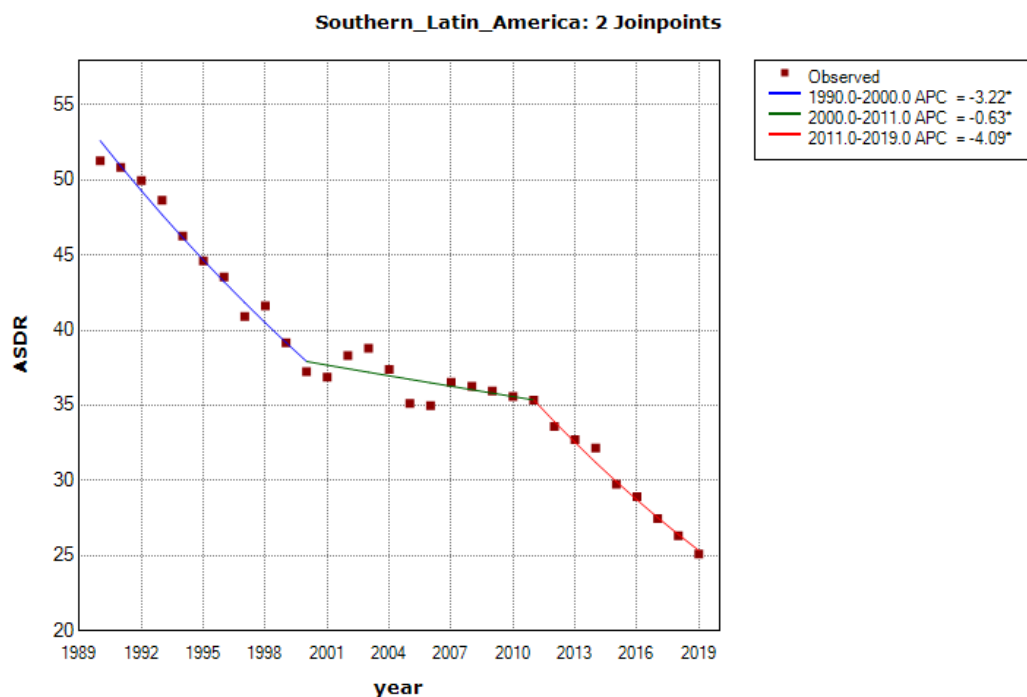


Figure S38 Trends in the age-standardized disability-adjusted life rate (ASDR, per 100,000 population) of PM_{2.5}-related preterm birth in Southern Latin America from 1990 to 2019. * $P < 0.05$

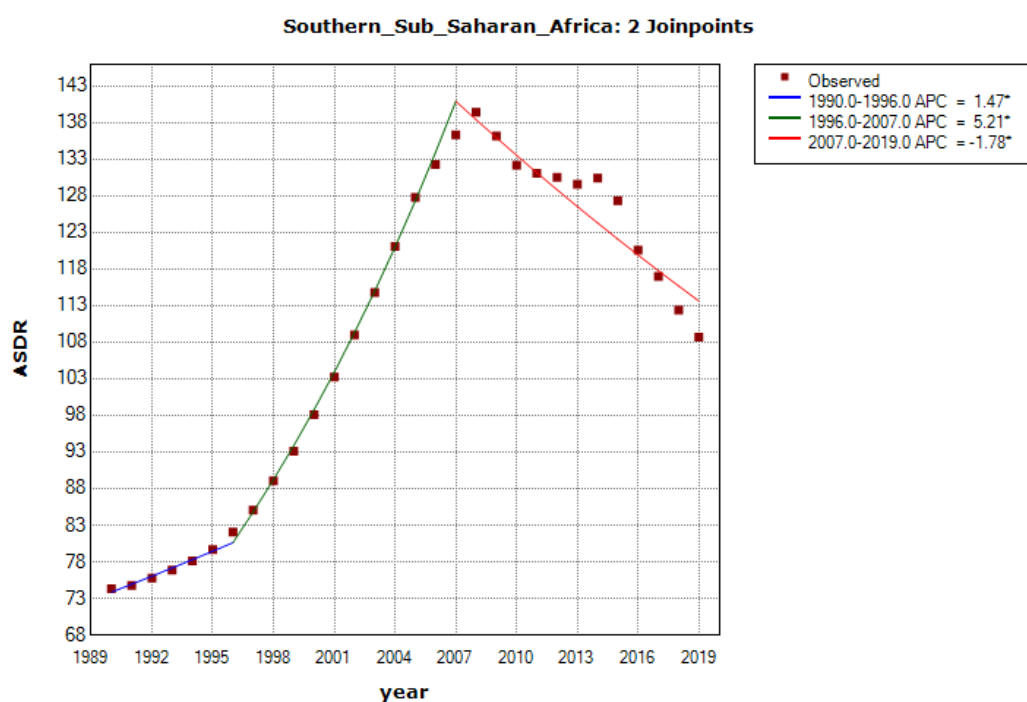


Figure S39 Trends in the age-standardized disability-adjusted life rate (ASDR, per 100,000 population) of PM_{2.5}-related preterm birth in Southern Sub Saharan Africa from 1990 to 2019. * $P < 0.05$

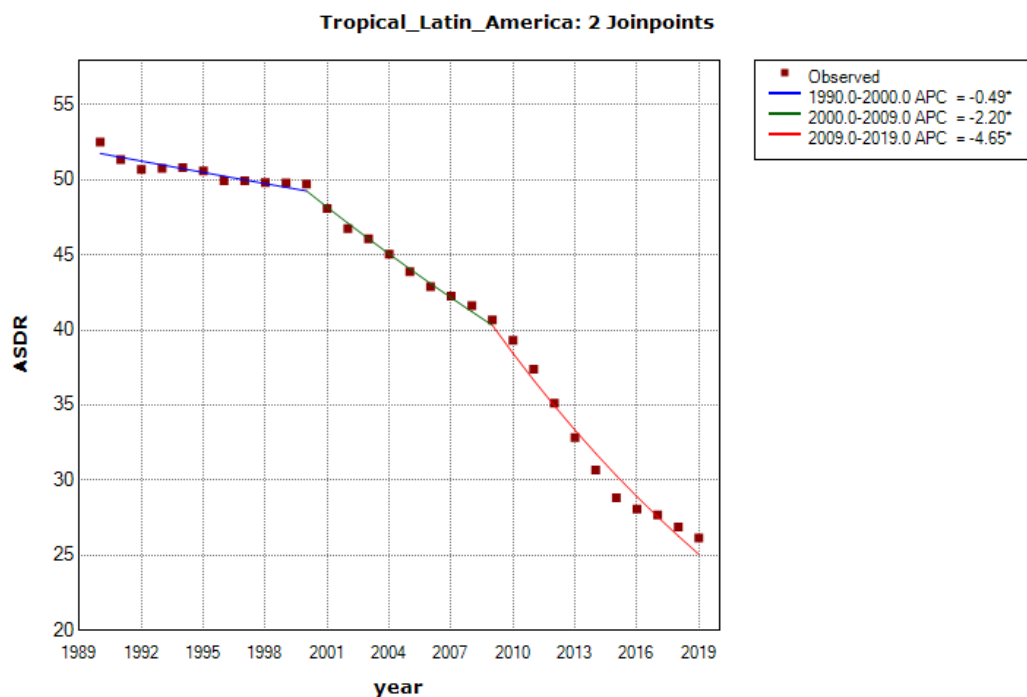


Figure S40 Trends in the age-standardized disability-adjusted life rate (ASDR, per 100,000 population) of PM_{2.5}-related preterm birth in Tropical Latin America from 1990 to 2019. * $P < 0.05$

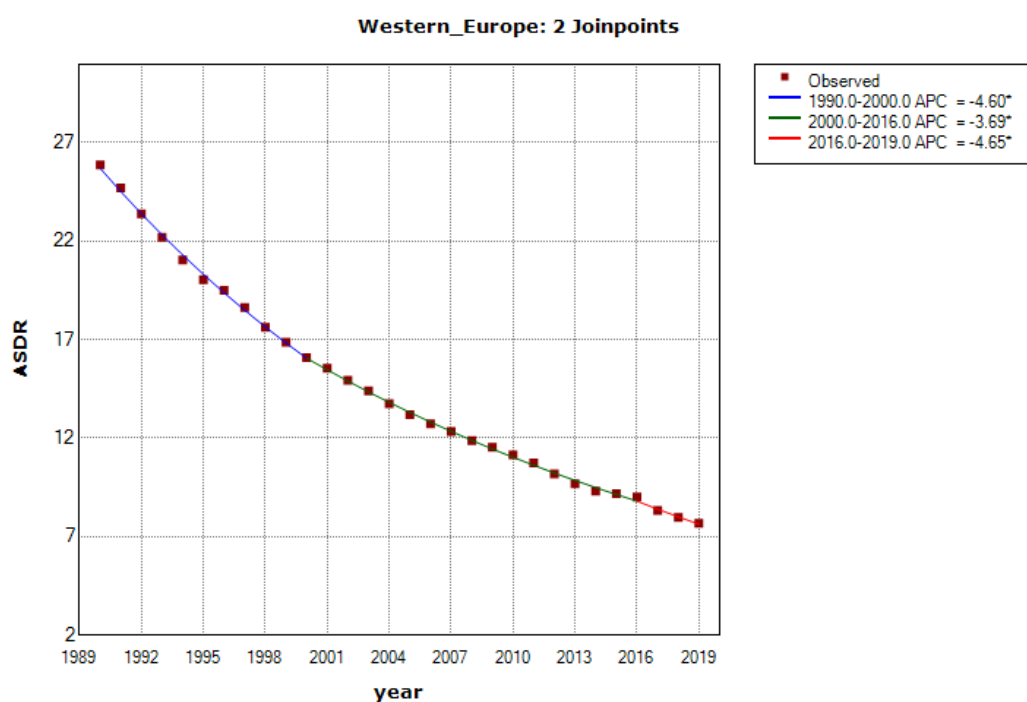


Figure S41 Trends in the age-standardized disability-adjusted life rate (ASDR, per 100,000 population) of PM_{2.5}-related preterm birth in Western Europe from 1990 to 2019. * $P < 0.05$

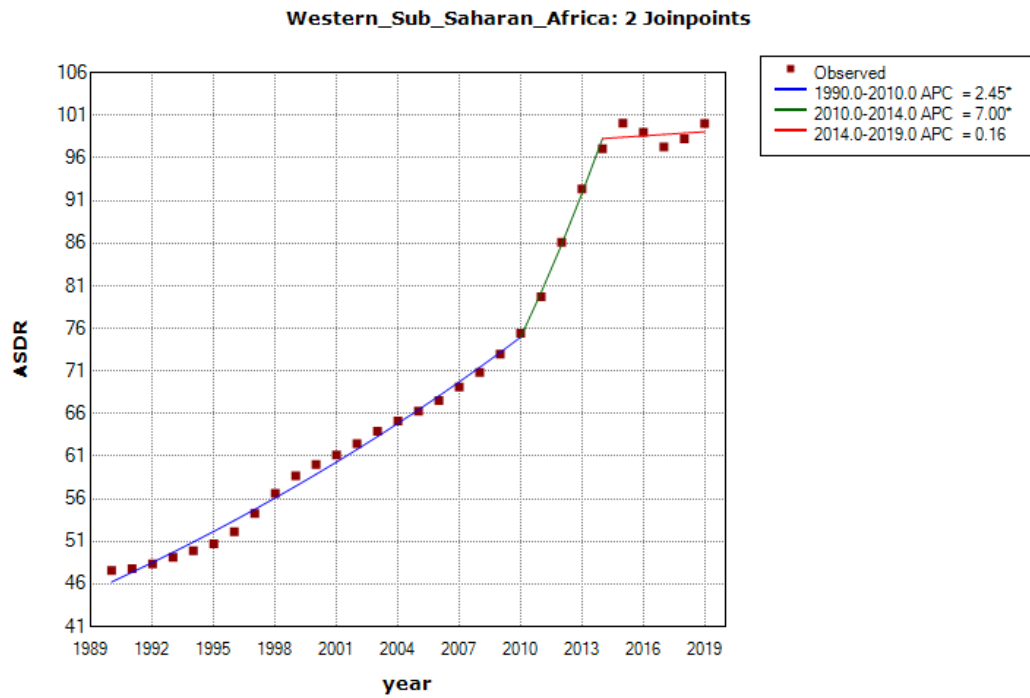


Figure S42 Trends in the age-standardized disability-adjusted life rate (ASDR, per 100,000 population) of PM_{2.5}-related preterm birth in Western Sub Saharan Africa from 1990 to 2019. * $P < 0.05$