

Supplementary Information

Roadside exposure and inflammation biomarkers among a cohort of traffic police
in Kathmandu, Nepal

Kabindra M. Shakya¹, Richard E. Peltier², Yimin Zhang³, Basu D. Pandey⁴

¹Department of Geography and the Environment, Villanova University, Pennsylvania

²Department of Environmental Health Science, University of Massachusetts, Amherst

³Department of Mathematics and Statistics, Villanova University, Pennsylvania

⁴Sukraraj Tropical and Infectious Disease Hospital, Kathmandu and Everest International Clinic
and Research Center, Nepal

¹Corresponding author

800 Lancaster Avenue, Villanova, PA 19085, USA

Email: kabindra.shakya@villanova.edu

Phone: 610-519-3590

Fax: 610-519-3338

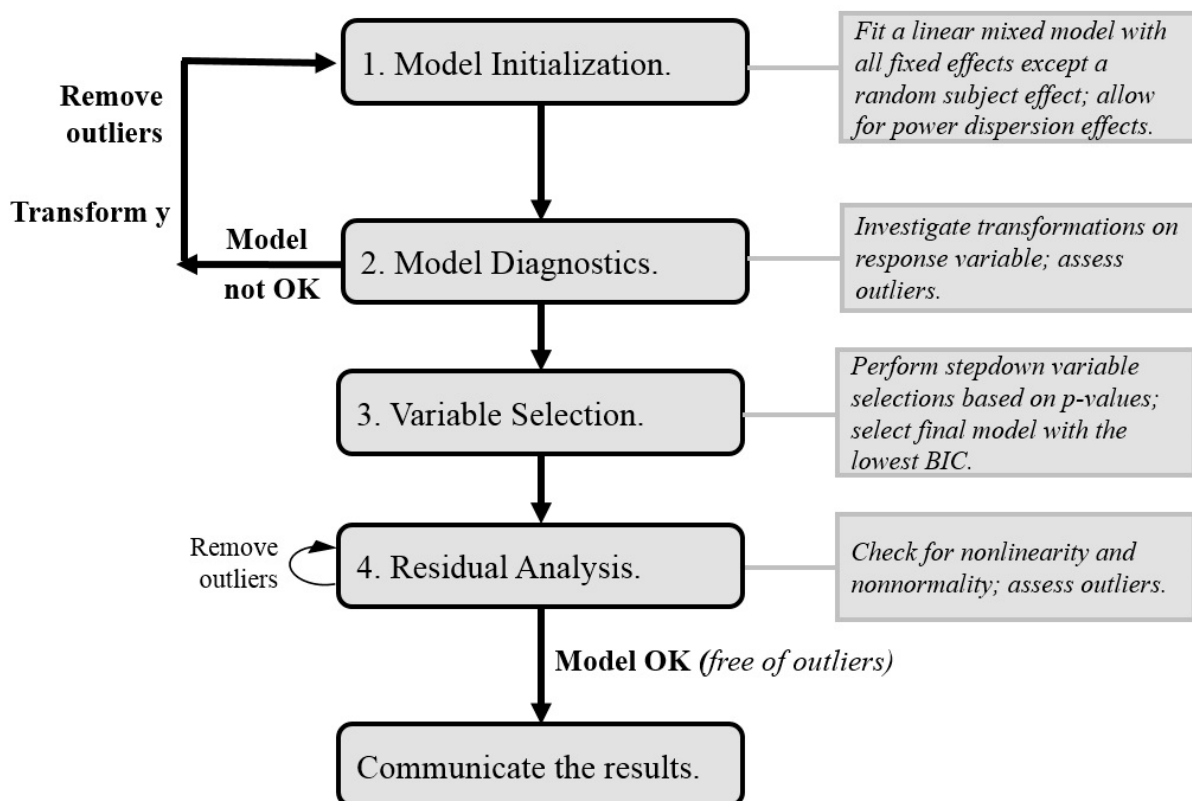


Figure S1. Strategy diagram for building linear mixed models.

Table S1. Variation of personal air pollution exposure at six sites between two seasons.

Site	PM _{2.5}		BC	
	Spring	Summer	Spring	Summer
Balaju	144.44 ± 29.94	65.69 ± 22.55	22.61 ± 4.76	20.19 ± 7.63
Chabahil	130.82 ± 23.73	48.92 ± 21.84	23.90 ± 9.05	14.71 ± 7.47
Jawalakhel	92.22 ± 44.98	44.43 ± 23.21	14.10 ± 2.28	15.72 ± 7.03
Kalanki	168.21 ± 28.41	-	18.60 ± 3.23	-
Thapathali	108.39 ± 28.79	24.33 ± 63.38	11.97 ± 5.88	12.37 ± 5.70

Mean and one standard deviation of 24-hour average of exposure for the personnel who volunteered to provide blood samples.