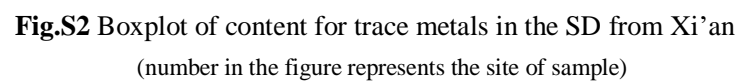
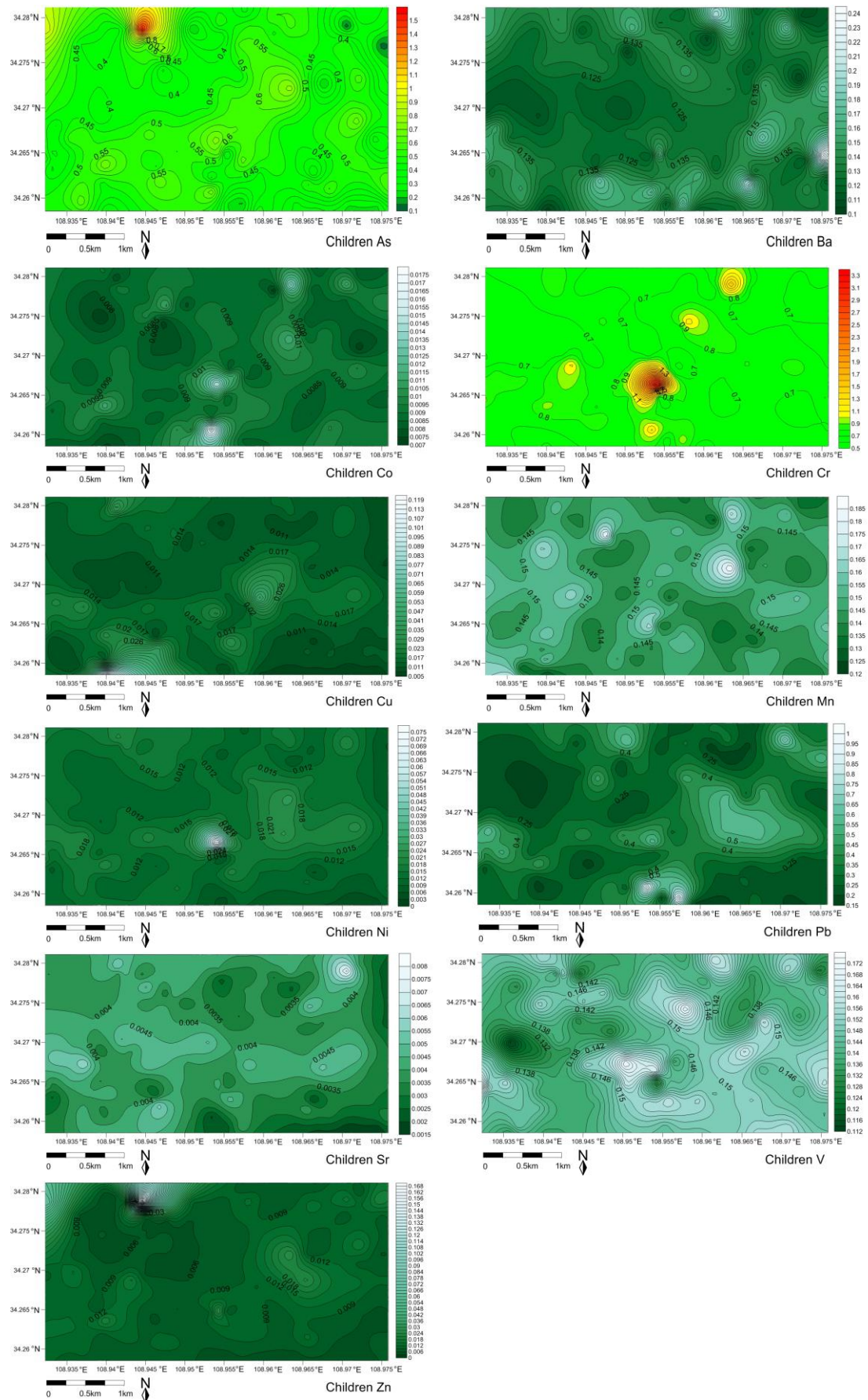


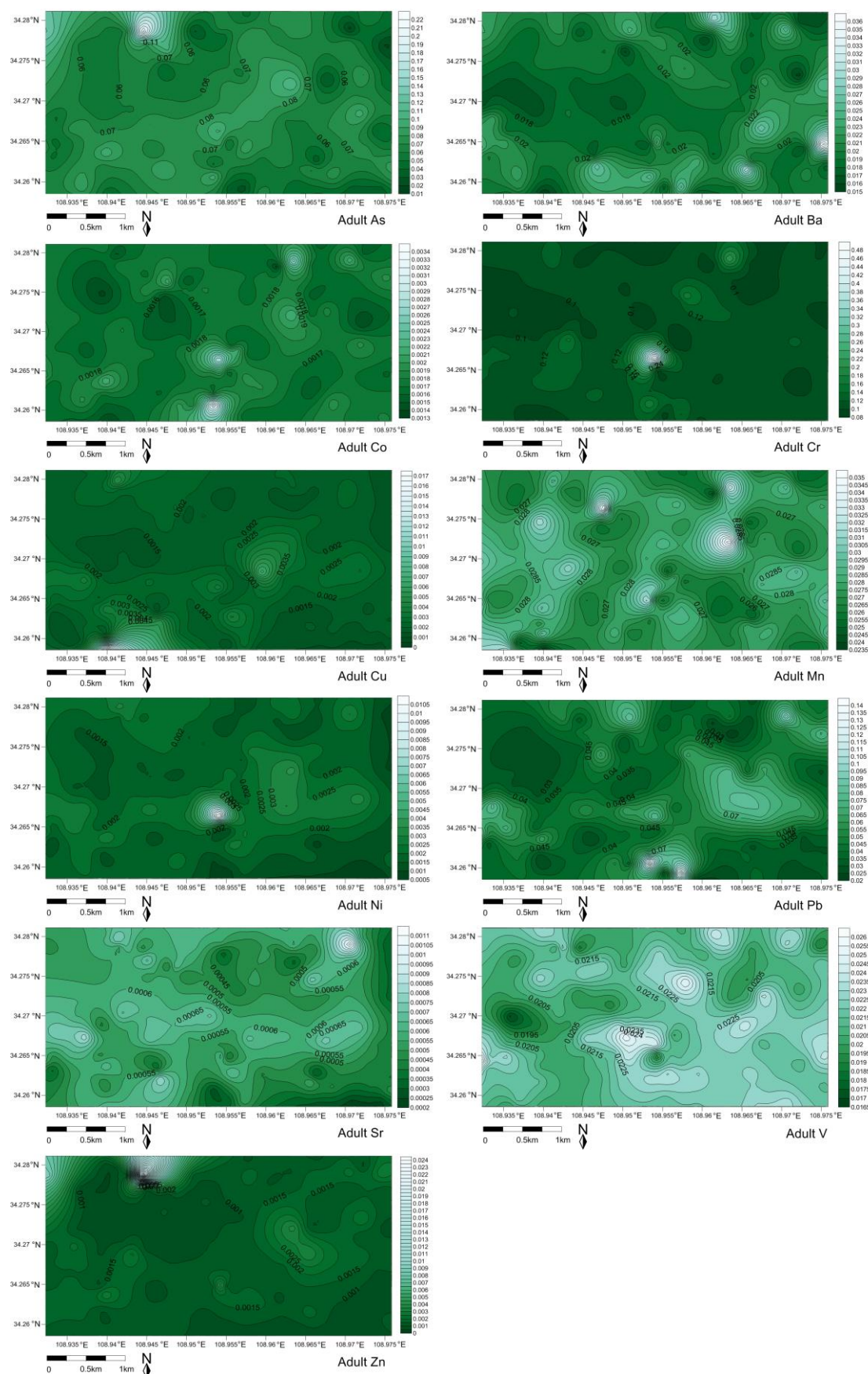
**Fig.S1** Hierarchical clustering analysis of trace metals in street dusts from Xi'an  
(Cluster method: Between-groups linkage; Interval: Squared Euclidean distance)



**Fig.S2** Boxplot of content for trace metals in the SD from Xi'an  
(number in the figure represents the site of sample)

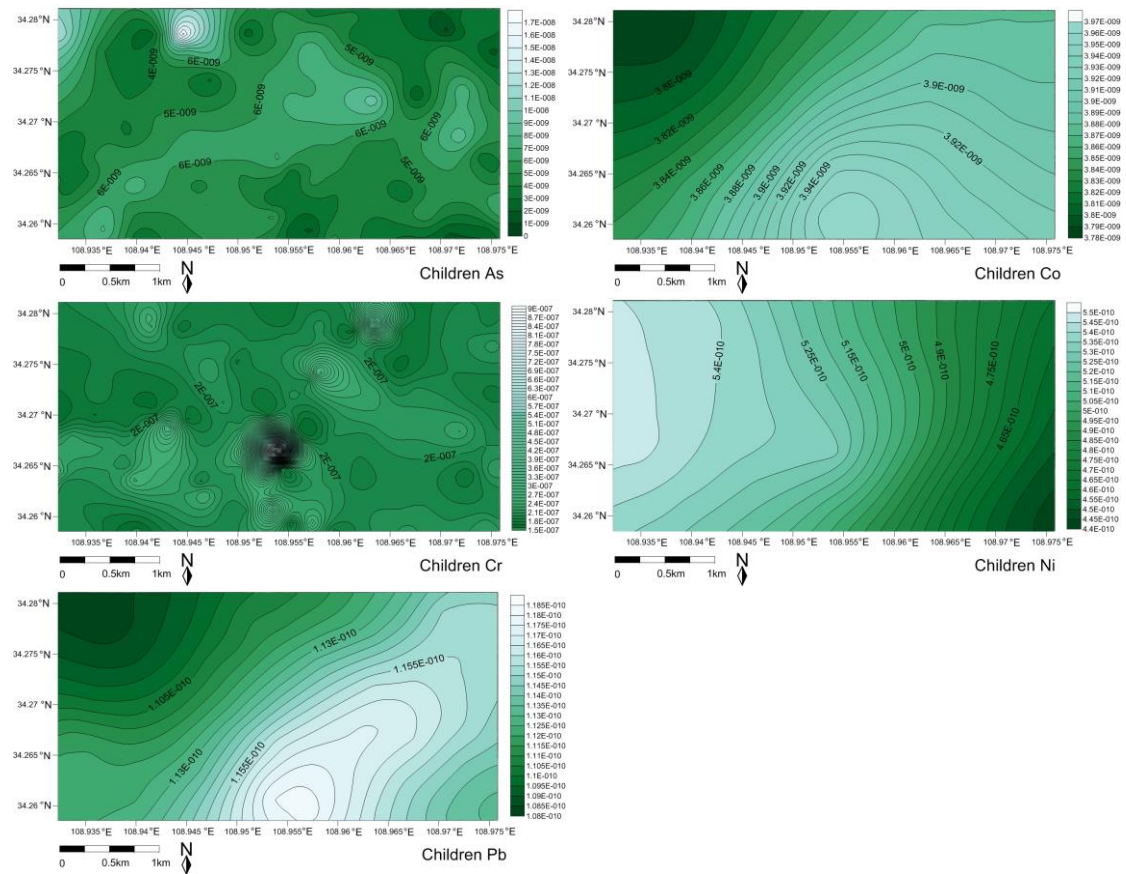


**Fig. S3** The spatial risk of non-carcinogenic of trace metals/metalloids exposed to children

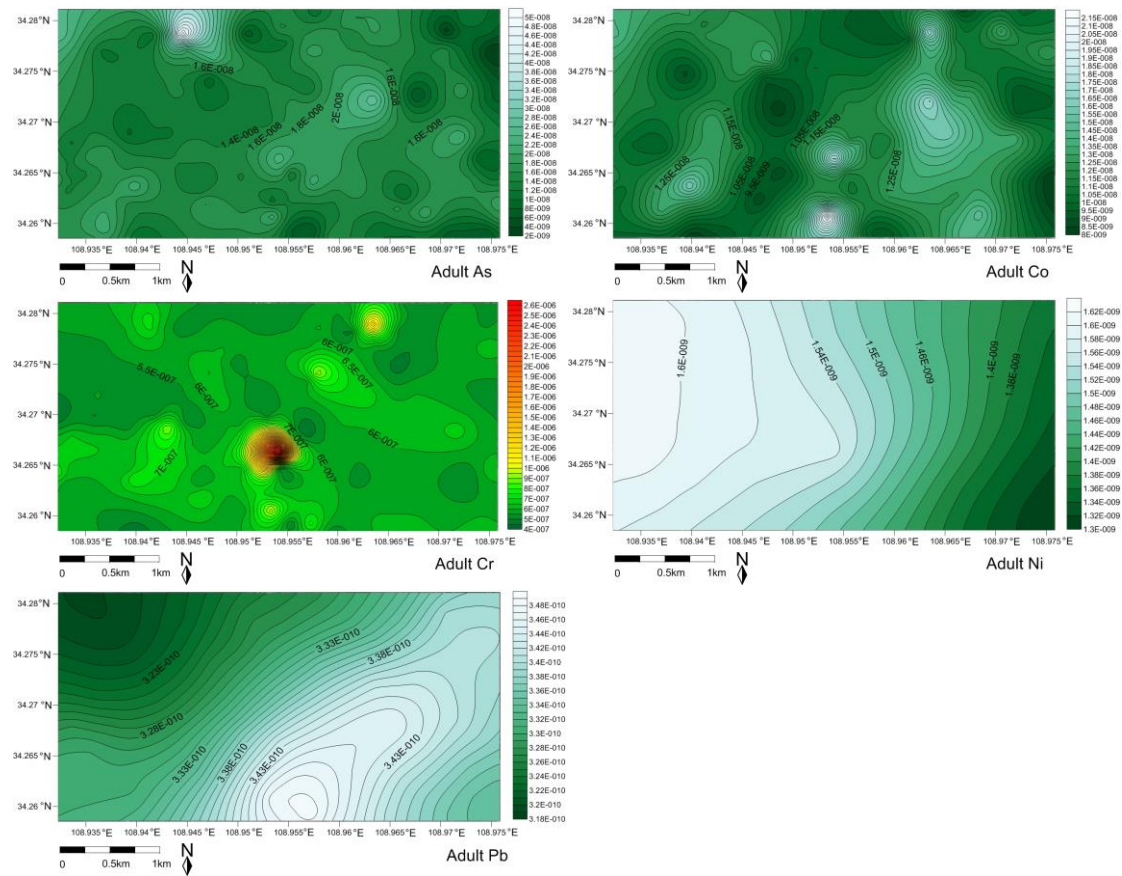


**Fig. S4** The spatial risk of non-carcinogenic of trace metals/metalloids exposed to adults





**Fig.S5** The spatial risk of carcinogenic of trace metals/metalloids exposed to children



**Fig.S6** The spatial risk of carcinogenic of trace metals/metalloids exposed to adults