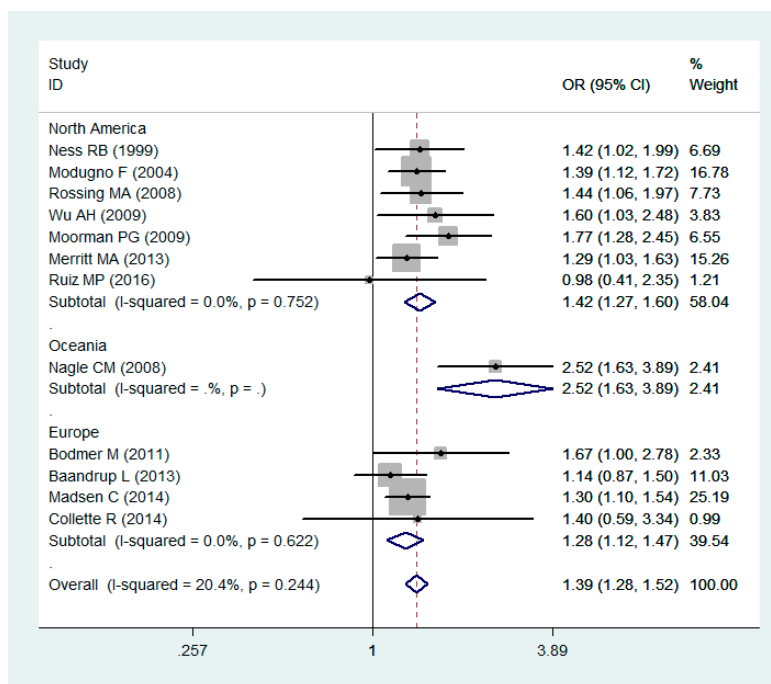
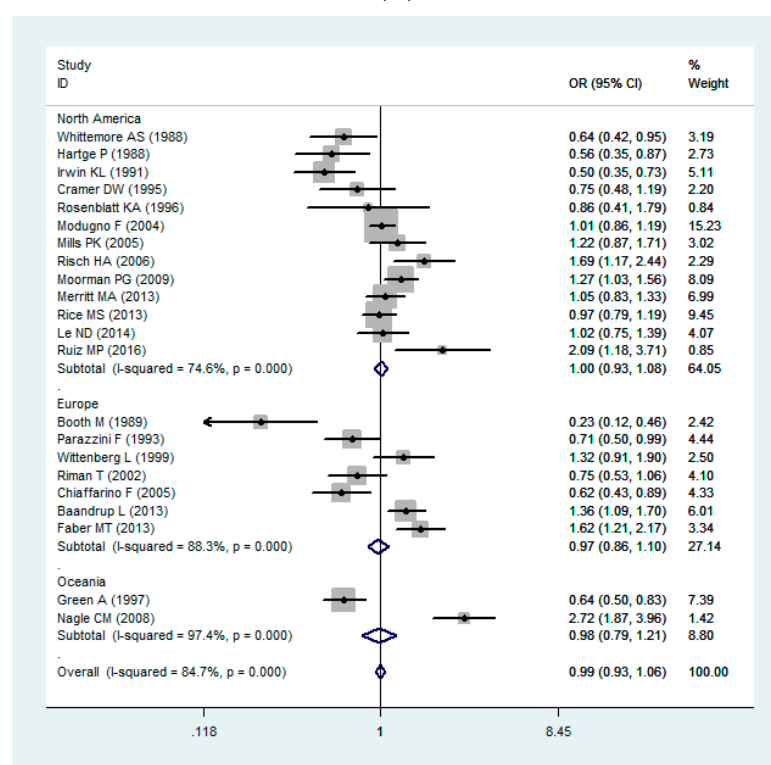


Supplementary Materials: The Association between Endometriosis, Tubal Ligation, Hysterectomy and Epithelial Ovarian Cancer: Meta-Analyses

Chunpeng Wang, Zhenzhen Liang, Xin Liu, Qian Zhang and Shuang Li

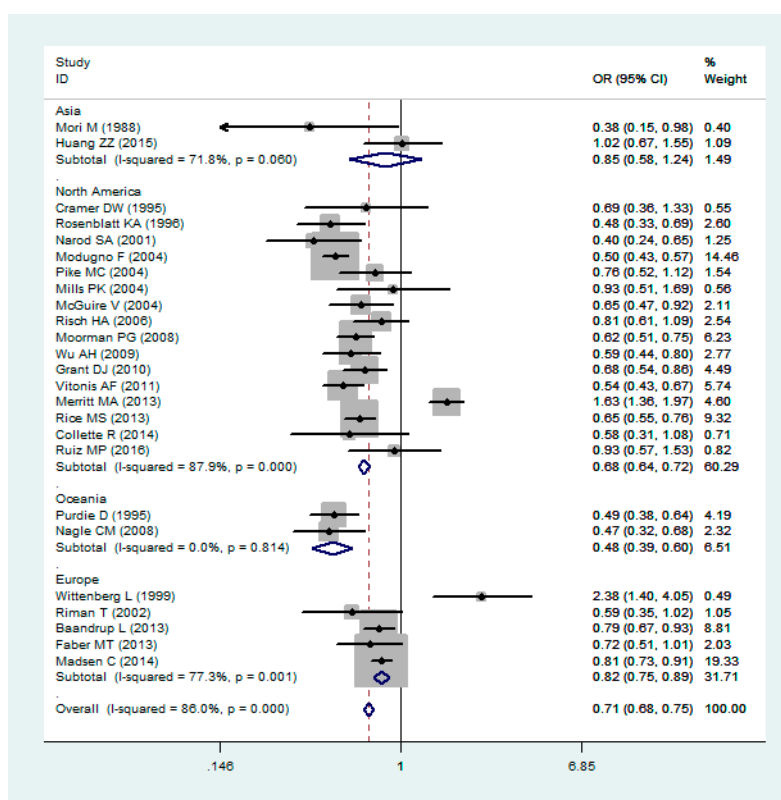


(A)



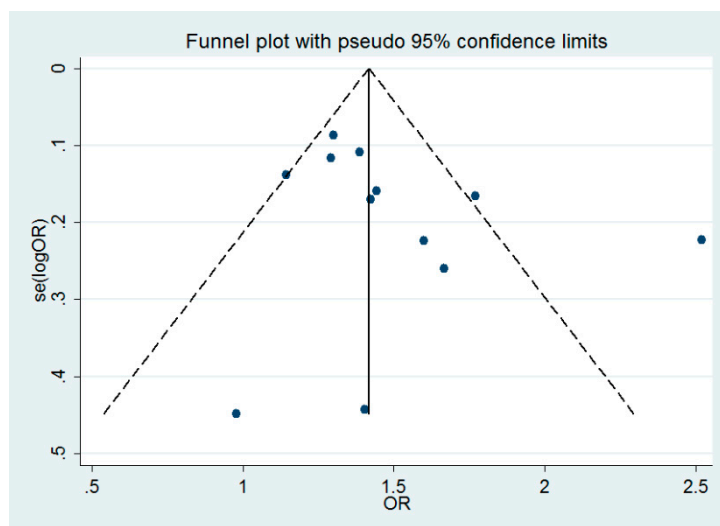
(B)

Figure S1. Cont.

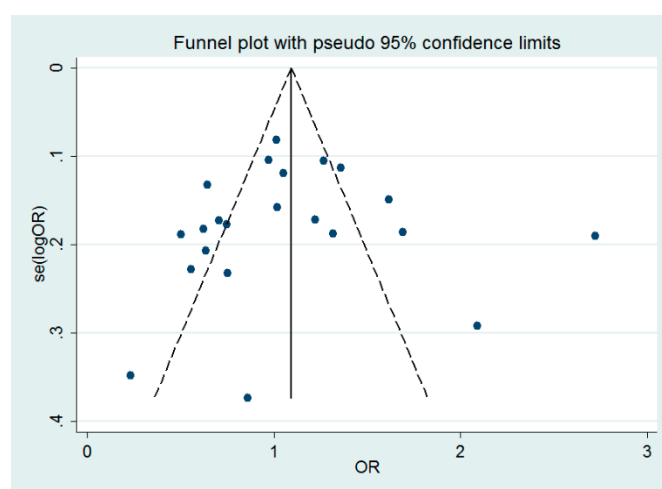


(C)

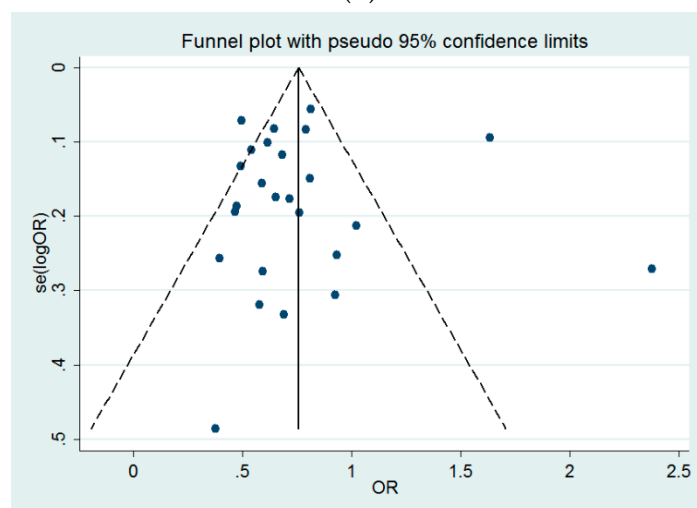
Figure S1. (A) The subgroup-analysis forest plot for the association between endometriosis and EOC; (B) The subgroup-analysis forest plot for the association between hysterectomy and EOC; (C) The subgroup-analysis forest plot for the association between tubal ligation and EOC.



(A)

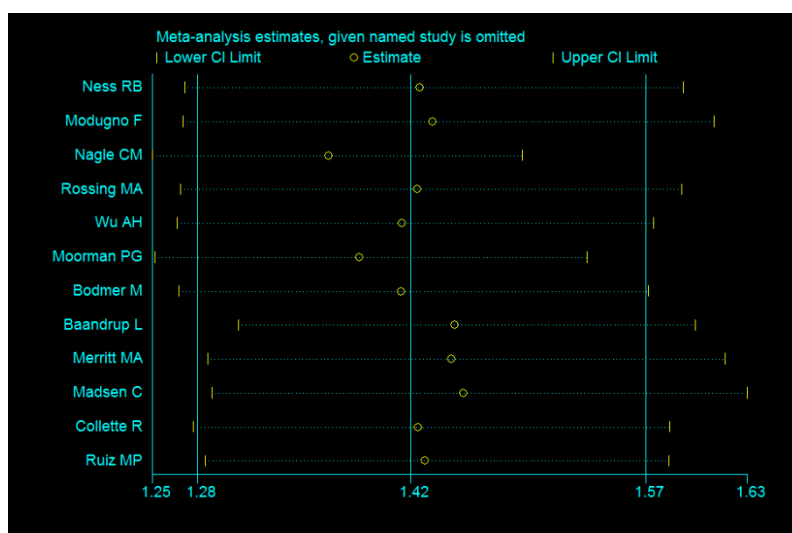


(B)

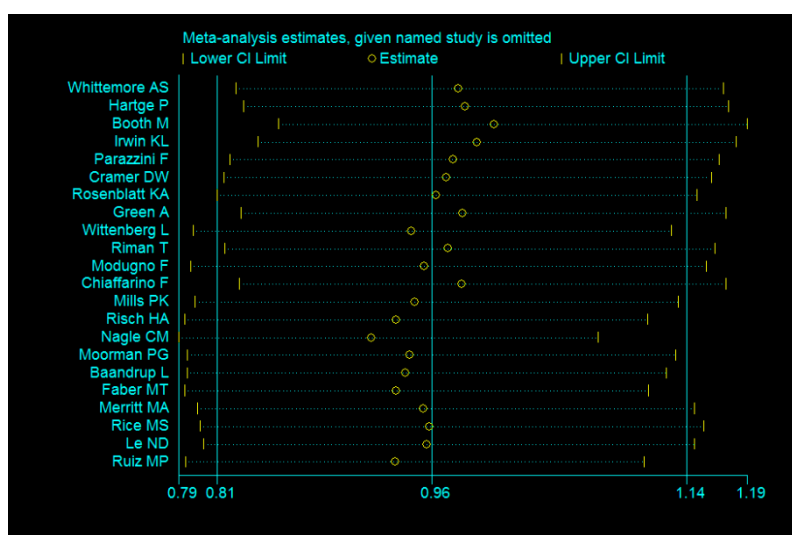


(C)

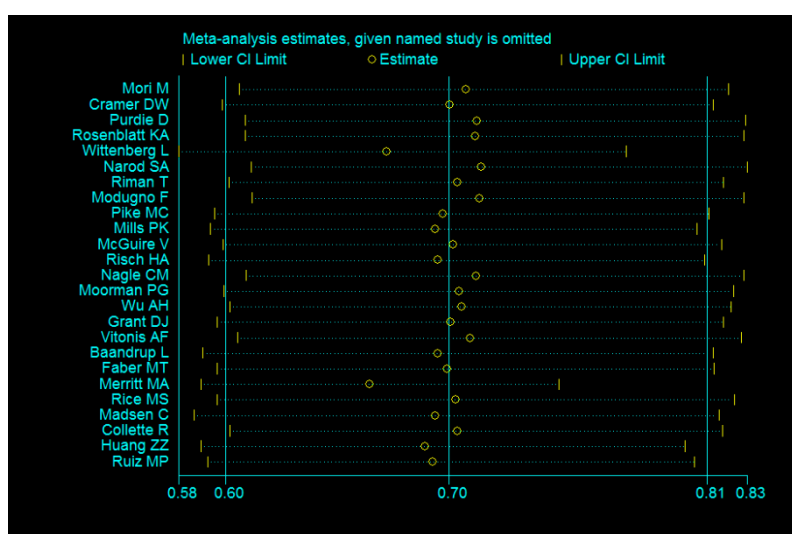
Figure S2. (A) The funnel plot for the association between endometriosis and EOC; (B) The funnel plot for the association between hysterectomy and EOC; (C) The funnel plot for the association between tubal ligation and EOC.



(A)

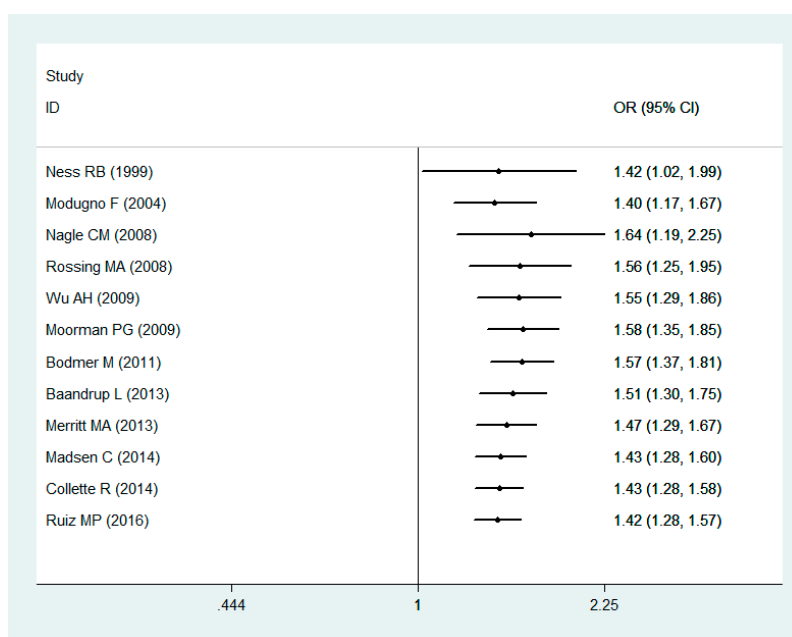


(B)

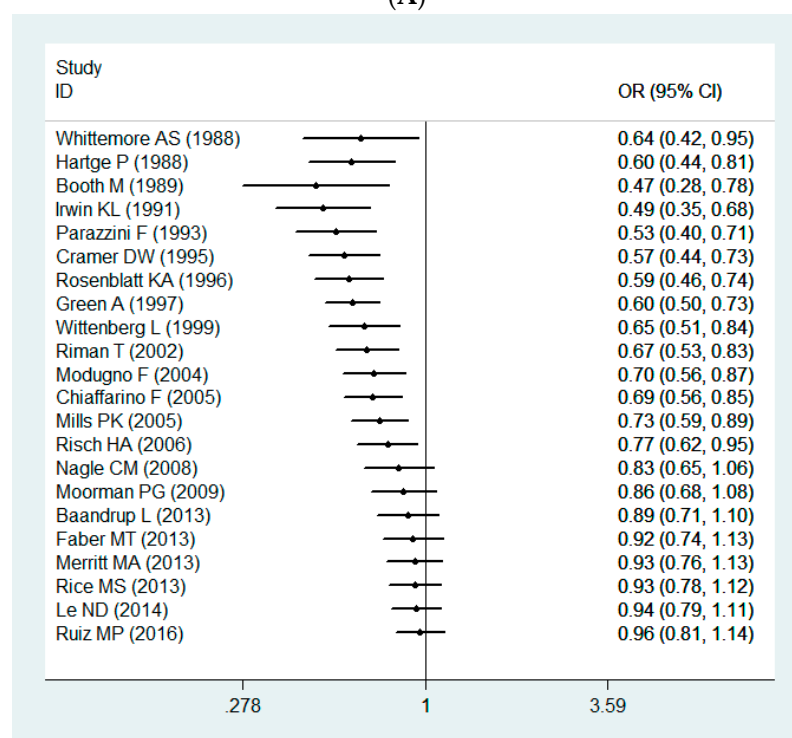


(C)

Figure S3. (A) The sensitivity analysis plot for the association between endometriosis and EOC; (B) The sensitivity analysis plot for the association between hysterectomy and EOC; (C) The sensitivity analysis plot for the association between tubal ligation and EOC.



(A)



(B)

Figure S4. Cont.

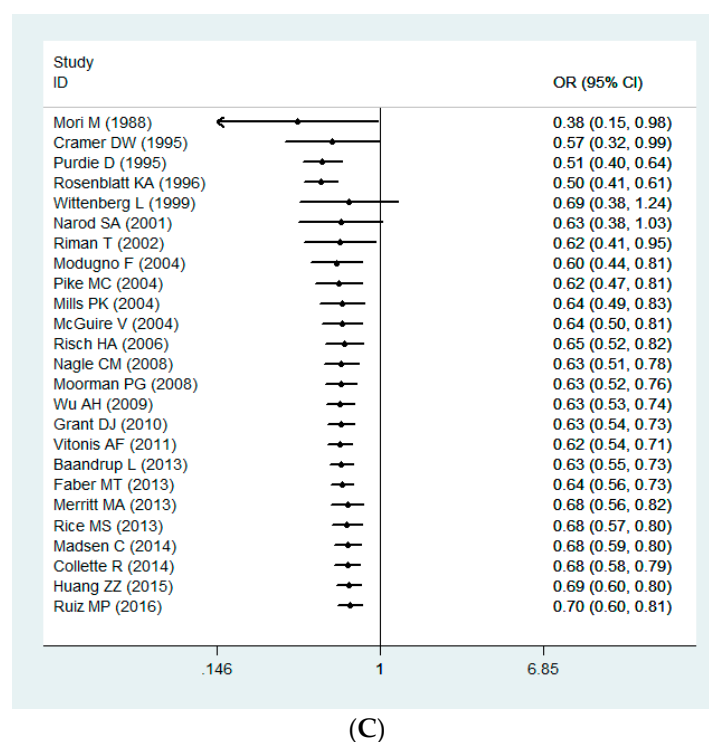


Figure S4. (A) The cumulative analysis plot for the association between endometriosis and EOC; (B) The cumulative analysis plot for the association between hysterectomy and EOC; (C) The cumulative analysis plot for the association between tubal ligation and EOC.



© 2016 by the authors; licensee MDPI, Basel, Switzerland. This article is an open access article distributed under the terms and conditions of the Creative Commons by Attribution (CC-BY) license (<http://creativecommons.org/licenses/by/4.0/>).