

Supporting Information

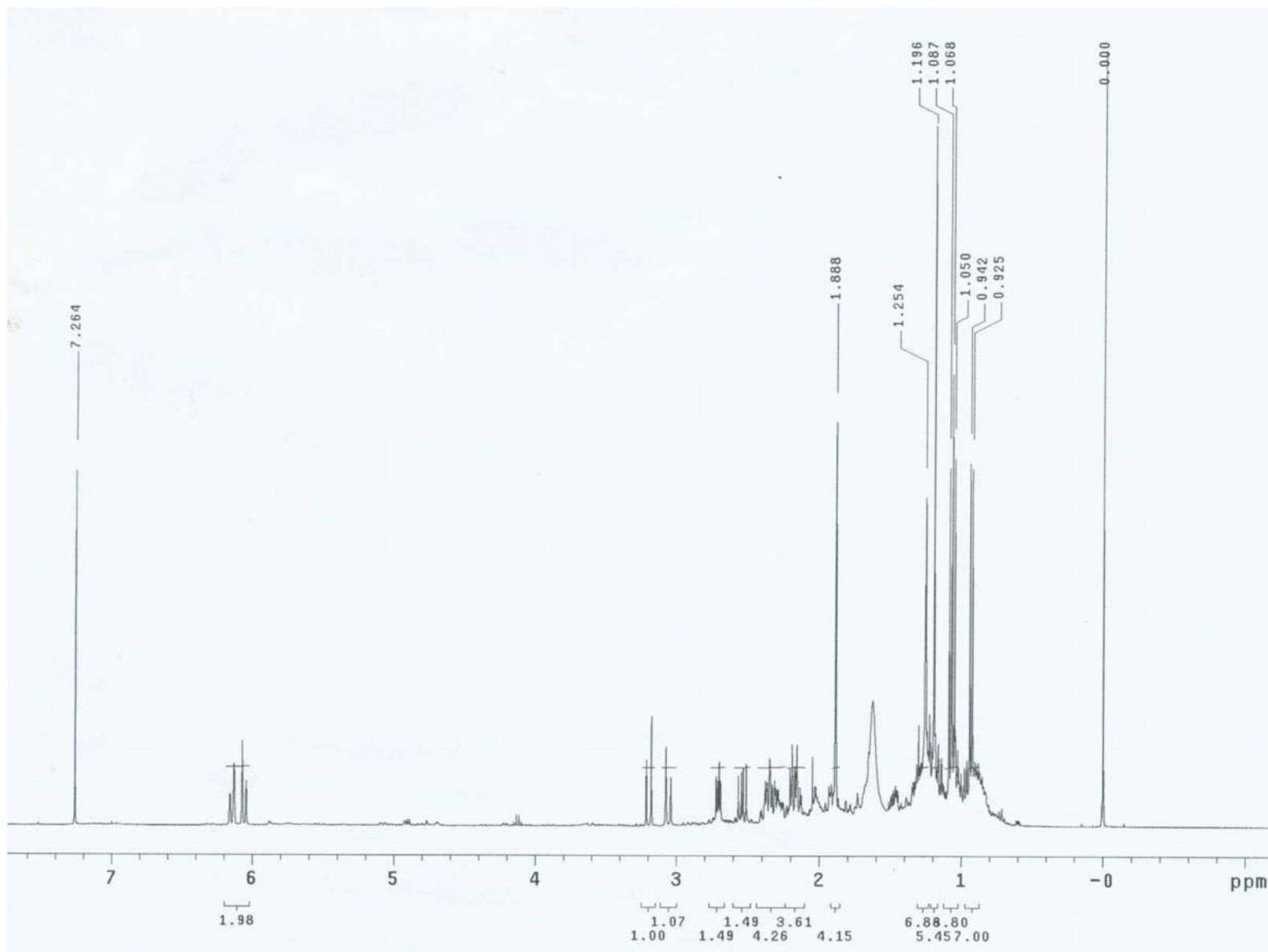
Bioactive Cembrane-Based Diterpenoids from the Soft Coral *Sinularia triangular*

Jui-Hsin Su* and Zhi-Hong Wen

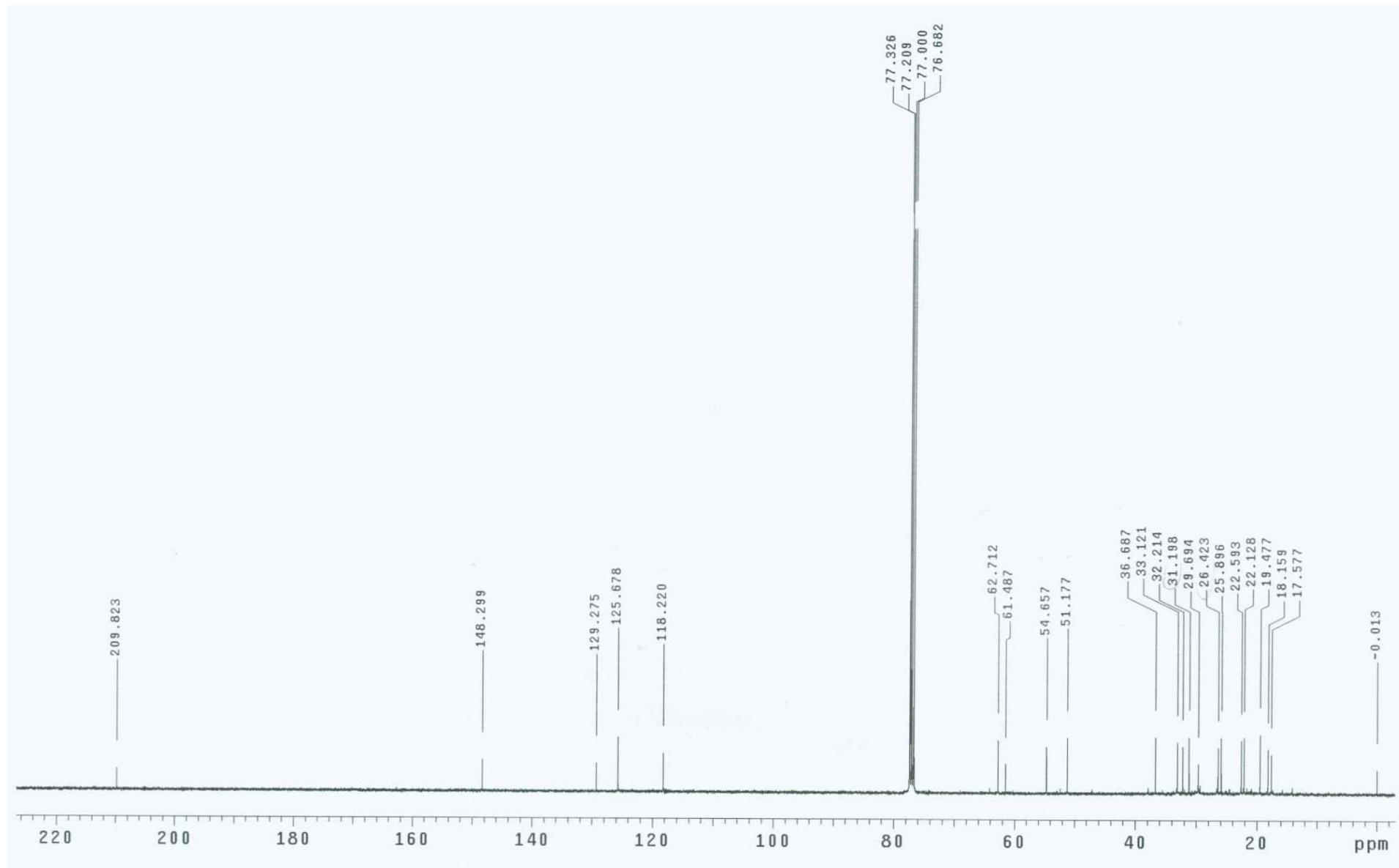
Table of Contents

- S1. Table of Contents
- S2. ^1H NMR spectrum of **1** in CDCl_3 at 400 MHz.
- S3. ^{13}C NMR spectrum of **1** in CDCl_3 at 100 MHz.
- S4. HMQC spectrum of **1** in CDCl_3 .
- S5. HMBC-1 spectrum of **1** in CDCl_3 .
- S6. HMBC-2 spectrum of **1** in CDCl_3 .
- S7. ^1H - ^1H COSY spectrum of **1** in CDCl_3 .

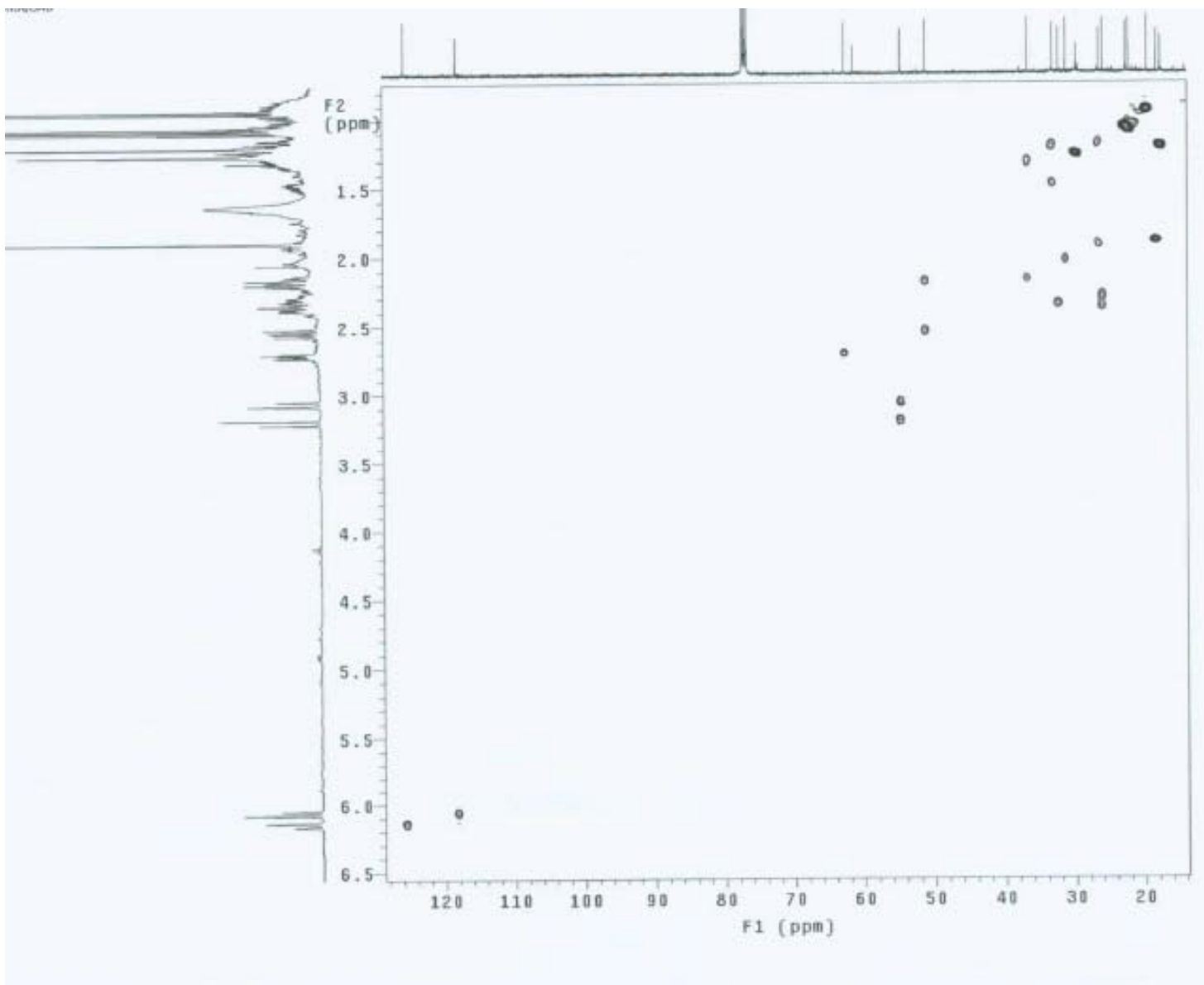
S1.



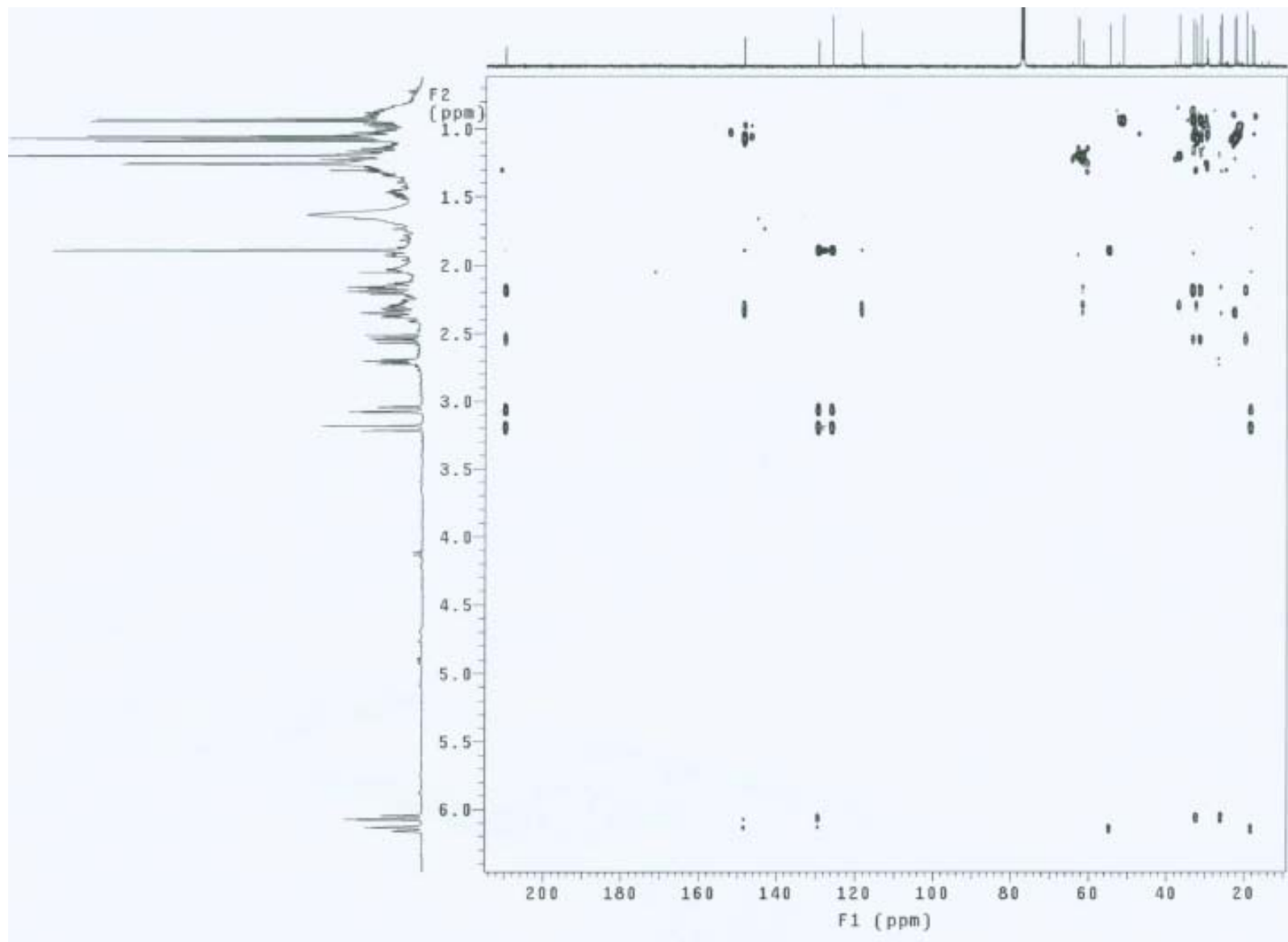
S2. ^1H NMR spectrum of **1** in CDCl_3 at 400 MHz.



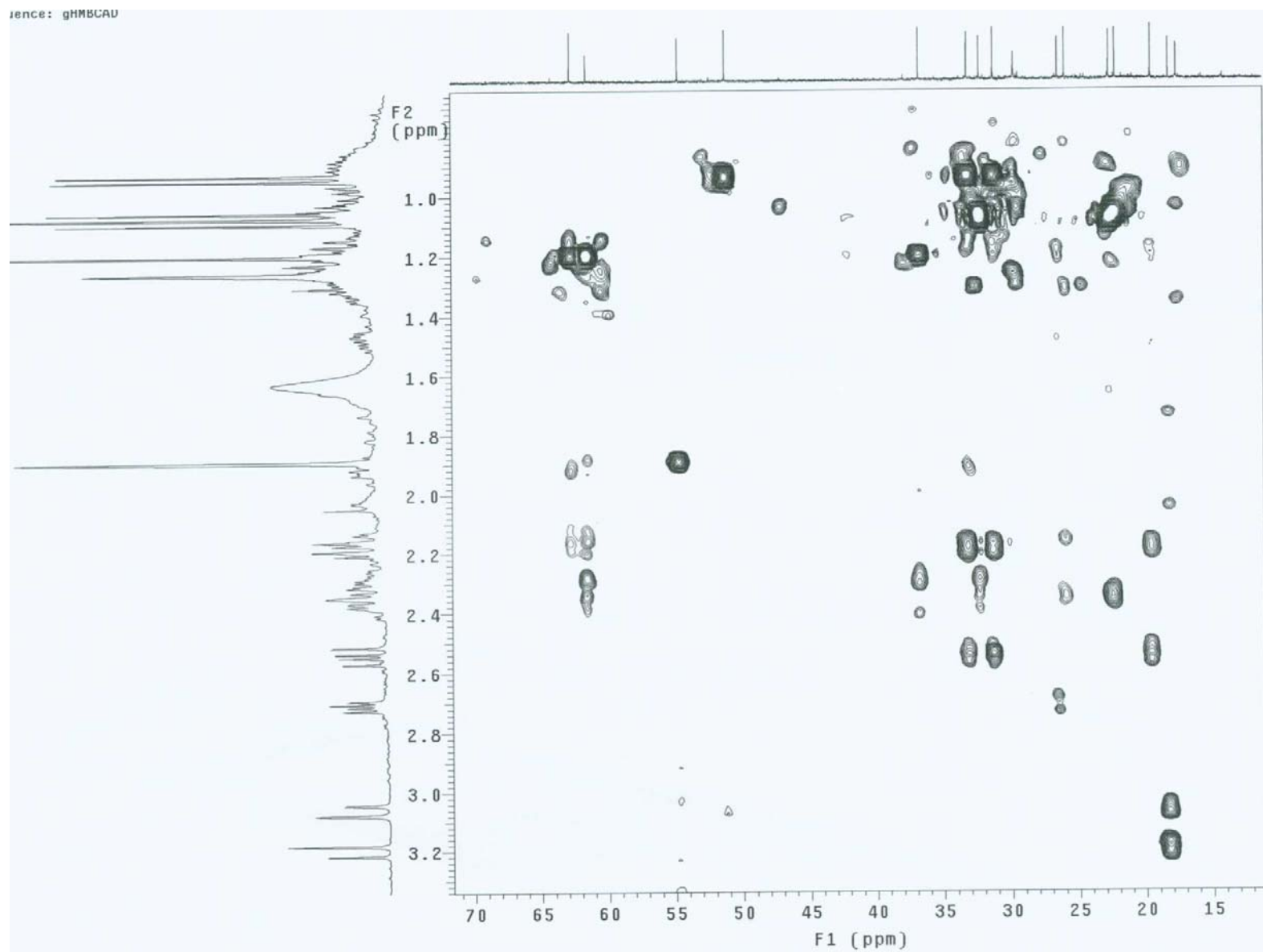
S3. ^{13}C NMR spectrum of **1** in CDCl_3 at 100 MHz.



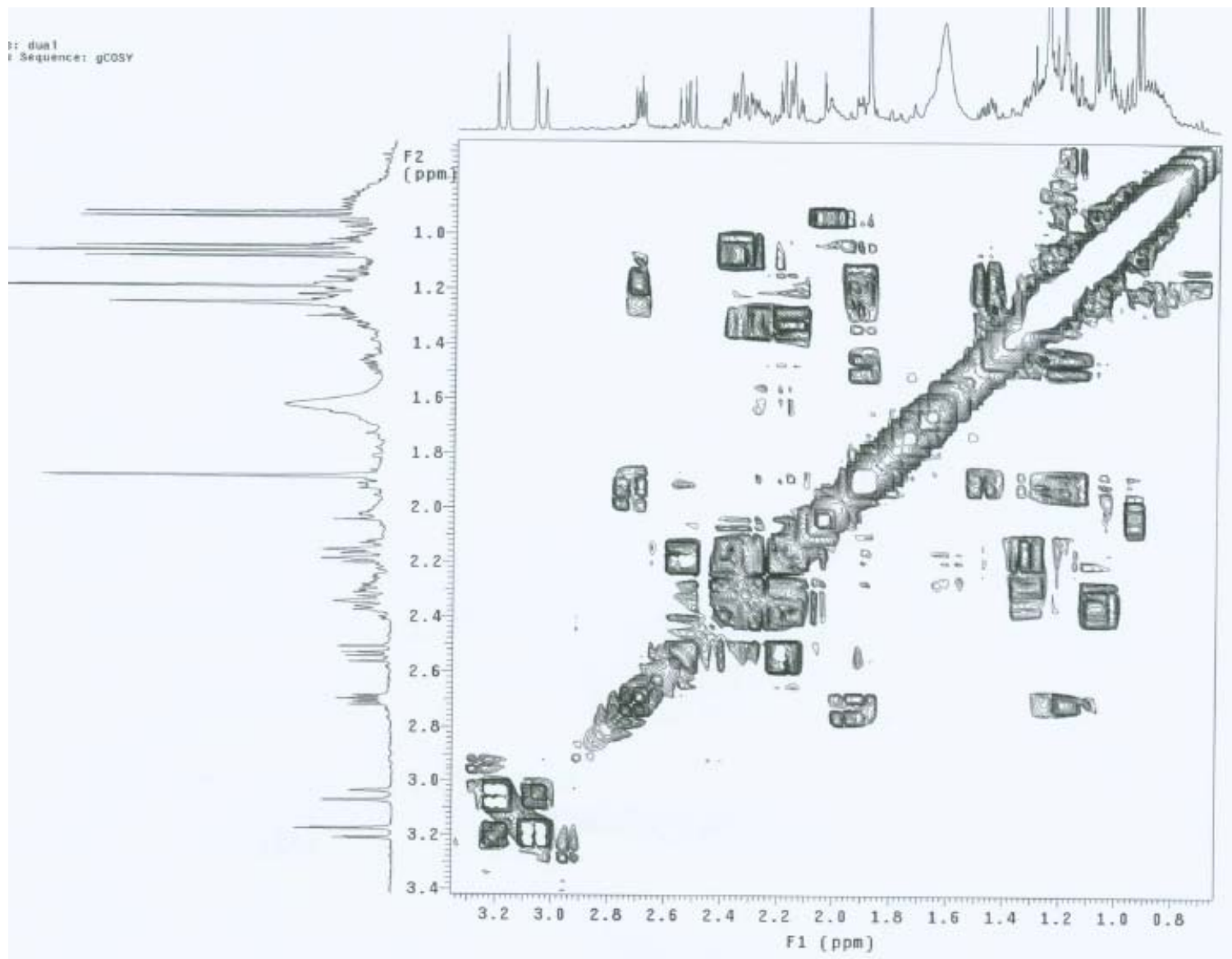
S4. HMQC spectrum of **1** in CDCl_3 .



S5. HMBC-1 spectrum of **1** in CDCl₃



S6. HMBC-2 spectrum of **1** in CDCl_3



S7. ^1H - ^1H COSY spectrum of **1** in CDCl_3 .