

# Hidden Diversity in an Antarctic Algal Forest: Metabolomic Profiling Linked to Patterns of Genetic Diversification in the Antarctic Red Alga *Plocamium* sp.

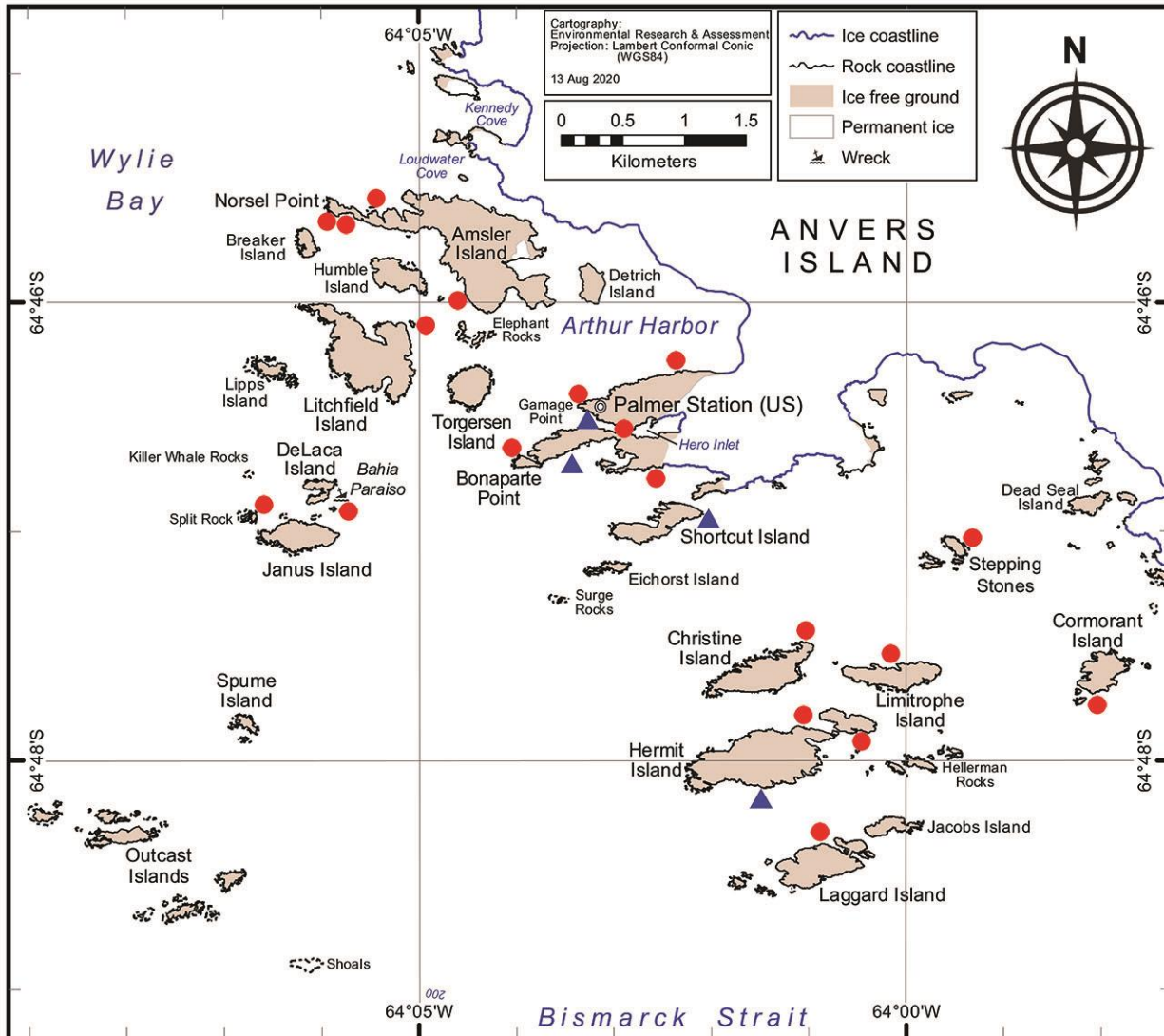
Andrew J. Shilling<sup>1</sup>, Sabrina Heiser<sup>2</sup>, Charles D. Amsler<sup>2\*</sup>, James B. McClintock<sup>2</sup>, and Bill J. Baker<sup>1\*</sup>

<sup>1</sup> Department of Chemistry, University of South Florida, 4202 E. Fowler Ave., Tampa, FL 33620, USA;  
andrewjshilling@yahoo.com (A.J.S.)

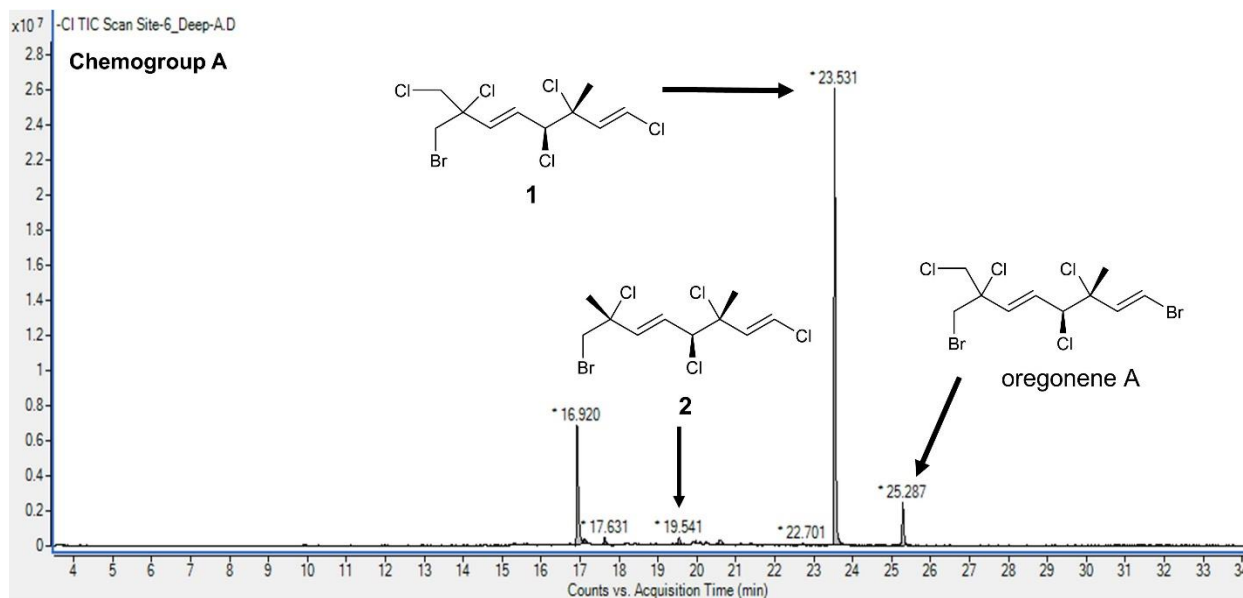
<sup>2</sup> Department of Biology, University of Alabama at Birmingham, 1300 University Blvd., Birmingham, AL 35233-  
1405, USA; heiser@uab.edu (S.H.); mcclinto@uab.edu (J.B.M.)

\* Correspondence: amsler@uab.edu (C.D.A.); bjbaker@usf.edu (B.J.B)

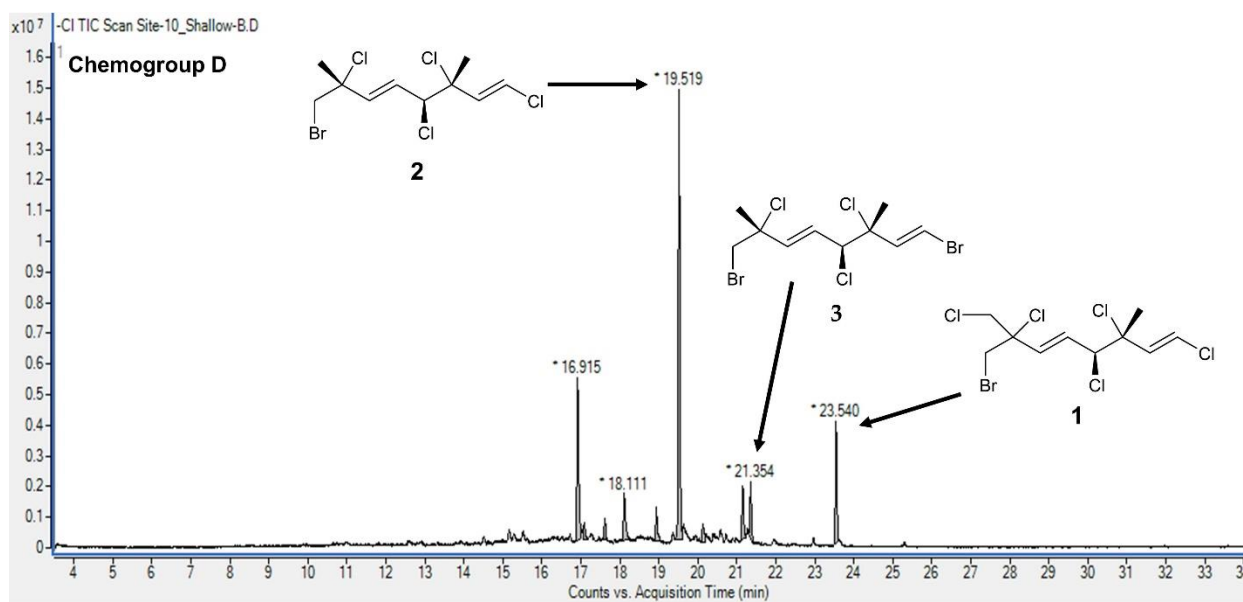
<b>Figure S1.</b> <i>Plocamium</i> sp. collection sites near Palmer Station.....	2
<b>Figure S2.</b> GC/MS (NCI) identification of major components of chemogroup A.....	3
<b>Figure S3.</b> GC/MS (NCI) identification of major components of chemogroup D.....	3
<b>Figure S4.</b> GC/MS (NCI) identification of major components of chemogroup H.....	4
<b>Figure S5.</b> GC/MS (NCI) identification of major components of chemogroup L.....	4



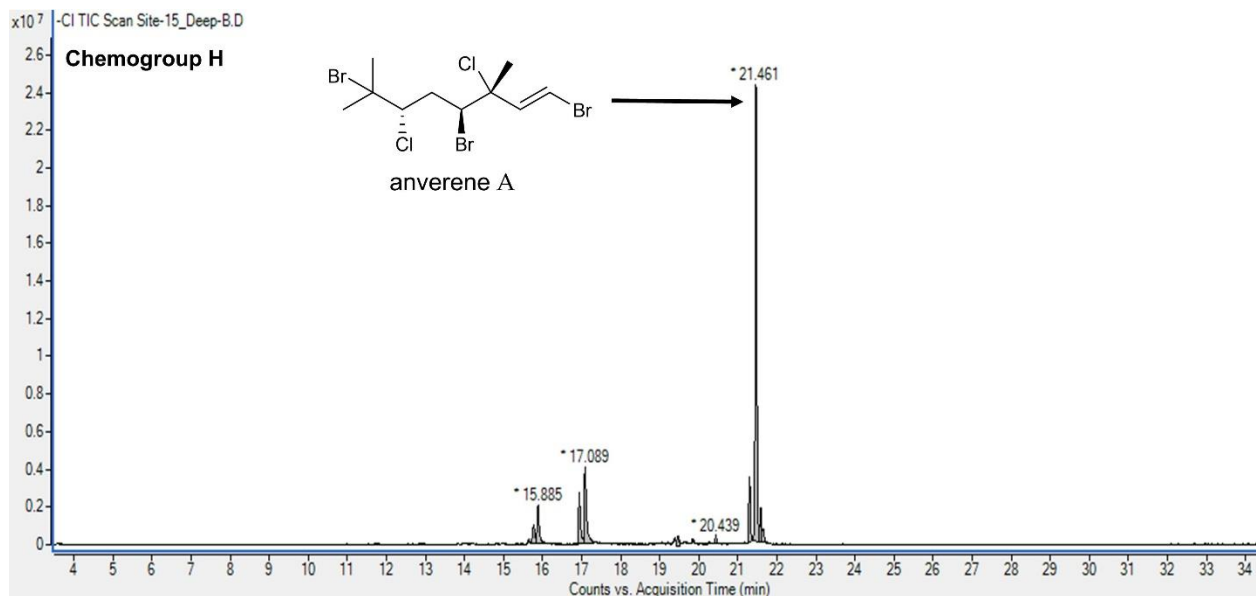
**Figure S1.** *Plocamium* sp. collection sites near Palmer Station, Antarctica. Red circles indicate collection sites from 2016, most of which were resampled in 2017 and/or 2018. Blue triangles indicate additional collection sites from 2017 and 2018.



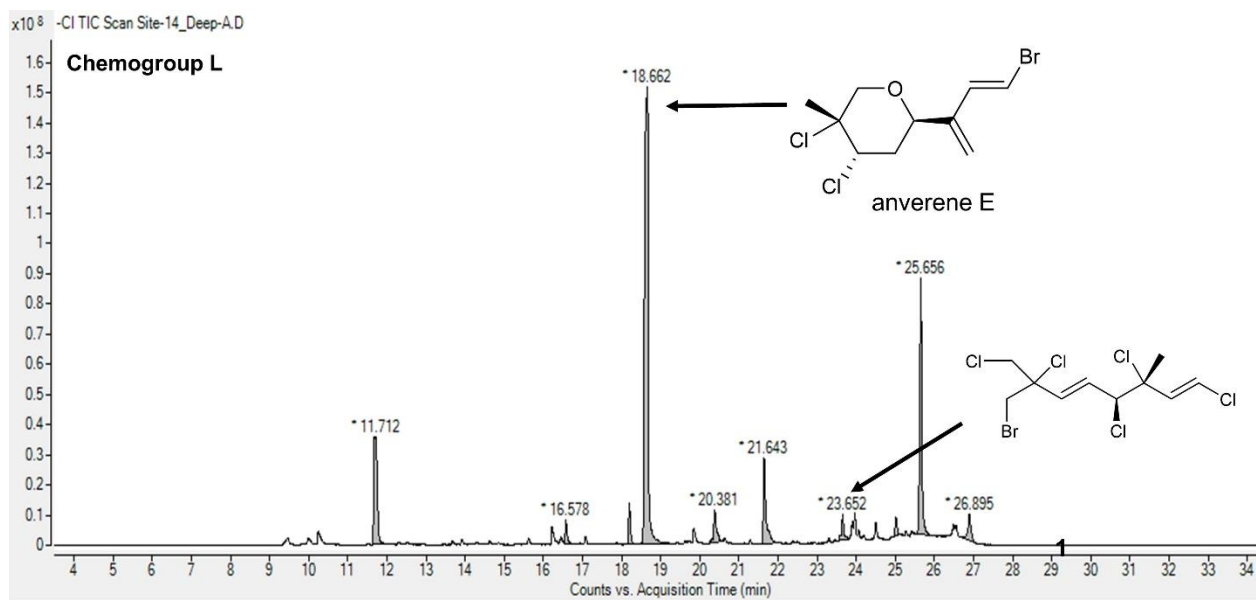
**Figure S2.** GC/MS (NCI) identification of major components of chemogroup A.



**Figure S3.** GC/MS (NCI) identification of major components of chemogroup D.



**Figure S4.** GC/MS (NCI) identification of major components of chemogroup H.



**Figure S5.** GC/MS (NCI) identification of major components of chemogroup L.