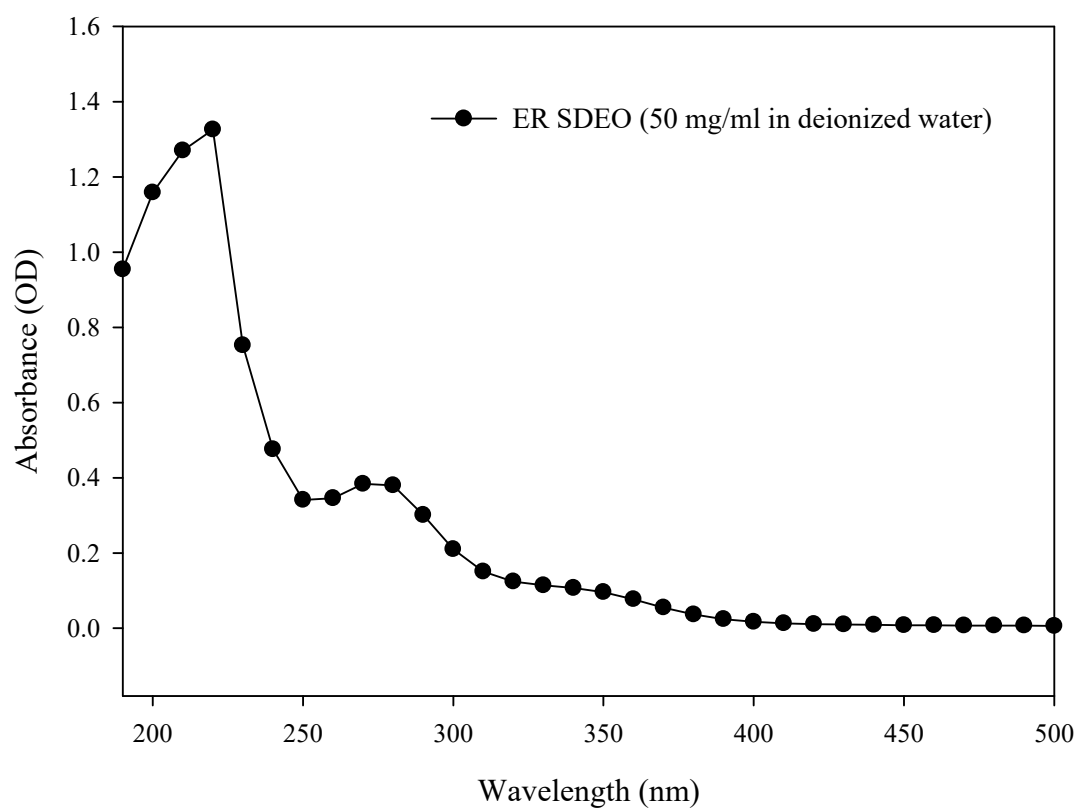


## Supplementary Material

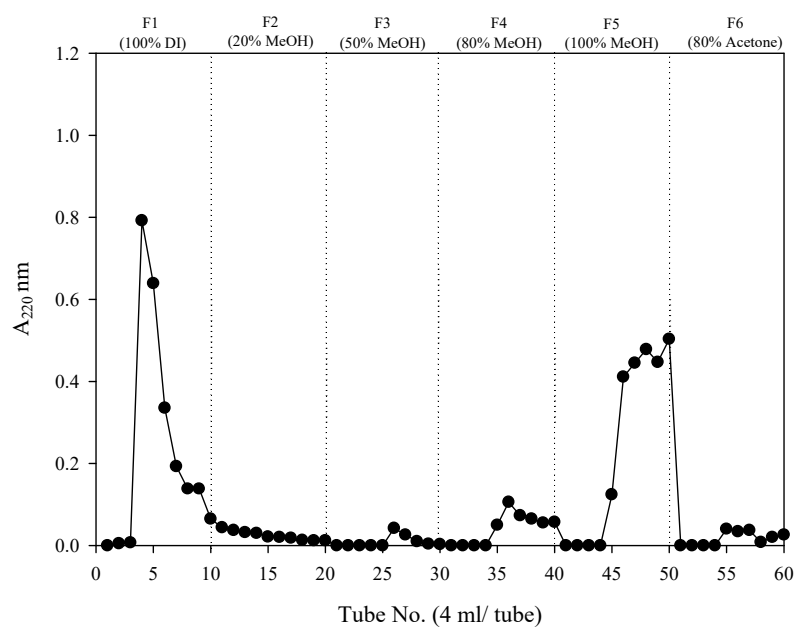
**Figure S1:** UV-visible absorption spectra of ER steam distilled essential oil (SDEO) using a spectrophotometer scanning from 190 nm to 500 nm.

**Figure S2:** ER SDEO chromatograms detected by absorbance at 220 nm (a) and 280 nm (b) using a Sephadex LH-20 gel filtration chromatography.

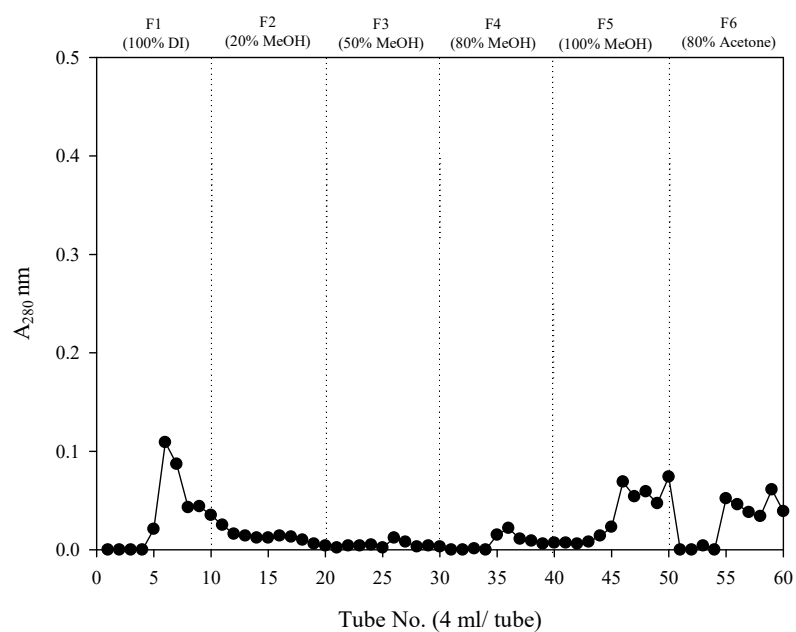


**Figure S1:** UV-visible absorption spectra of ER steam distilled essential oil (SDEO) using a spectrophotometer scanning from 190 nm to 500 nm.

(a)



(b)



**Figure S2:** ER SDEO chromatograms detected by absorbance at 220 nm (a) and 280 nm (b) using a Sephadex LH-20 gel filtration chromatography.