

Figure S1. Recurrence patterns for acral and cutaneous melanoma patients.

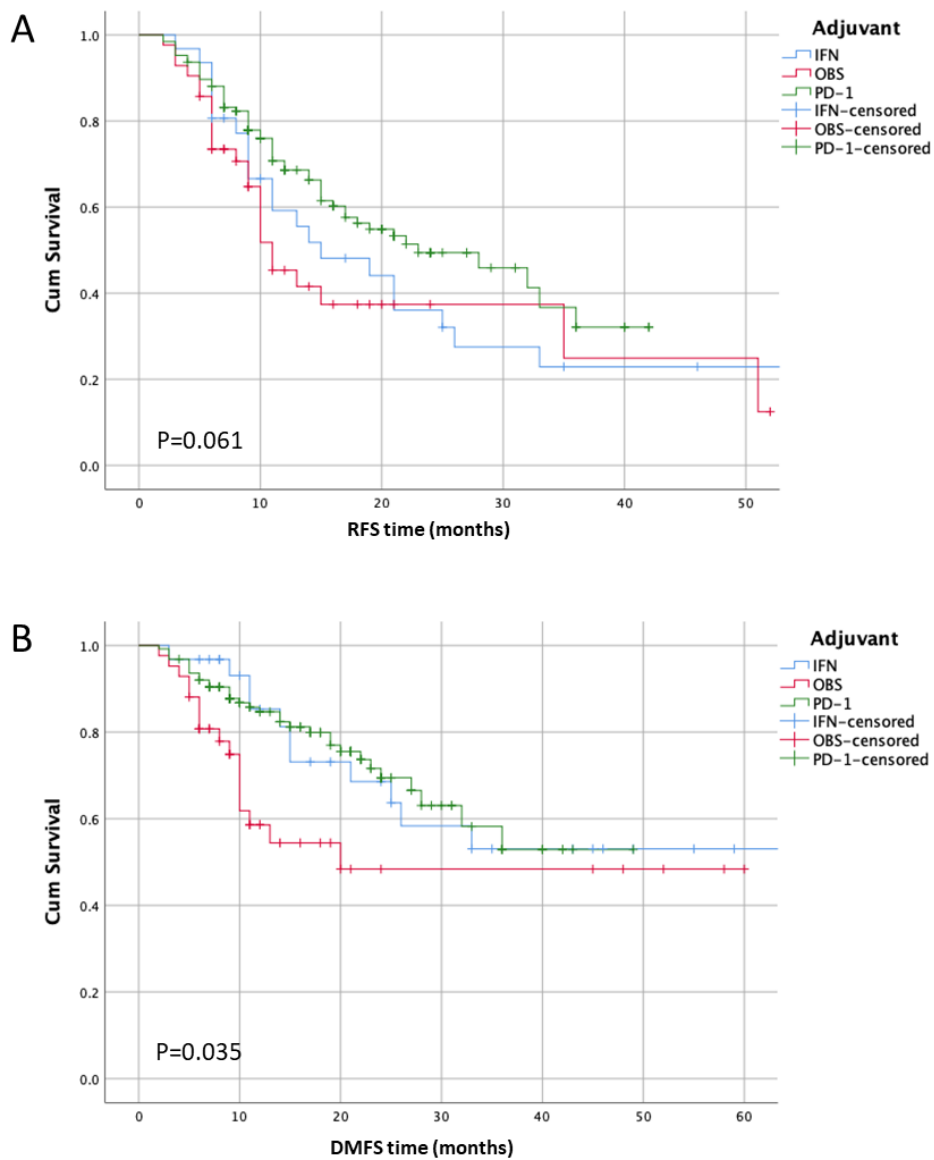


Figure S2. Kaplan-Meier curves of RFS (A) and DMFS (B) for all enrolled acral and cutaneous patients stratified by adjuvant PD-1 inhibitor treatment versus conventional IFN treatment or observation.

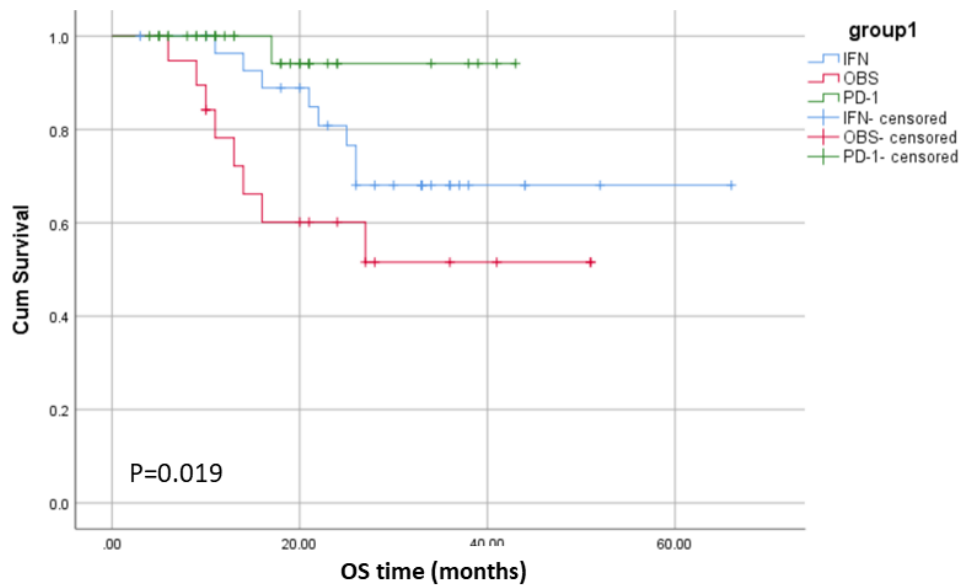


Figure S3. OS among all enrolled acral and cutaneous melanoma patients stratified by adjuvant PD-1 inhibitor treatment versus conventional IFN or observation, with a p-value of 0.019 between the PD-1 and the IFN groups.

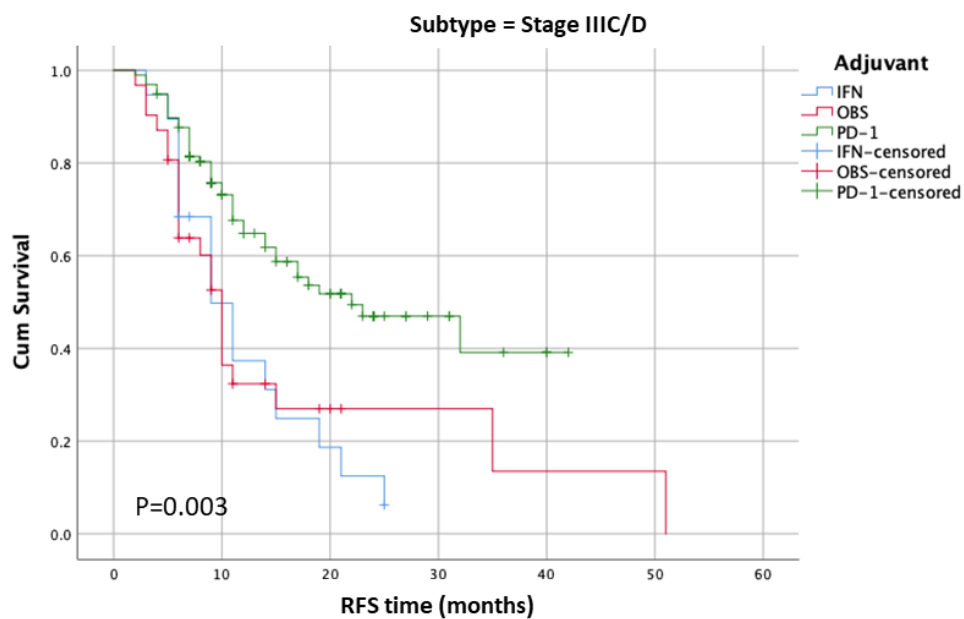


Figure S4. RFS for all stage IIIC and IIID melanoma patients stratified by adjuvant PD-1 inhibitor treatment versus conventional IFN or observation, with a p-value of 0.003 between the PD-1 and the IFN groups.

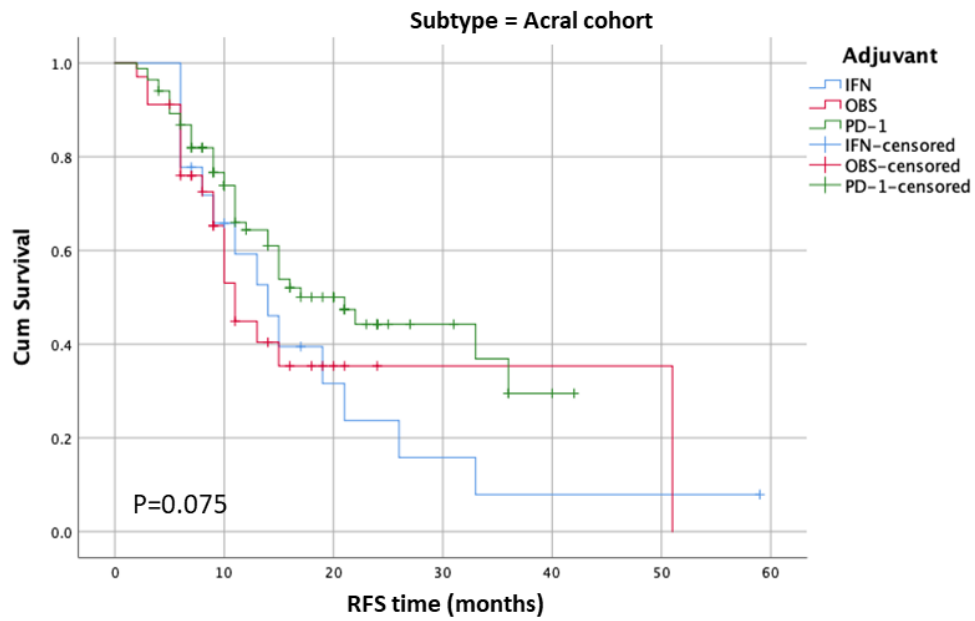


Figure S5. RFS for all acral melanoma patients stratified by adjuvant PD-1 inhibitor treatment versus conventional IFN or observation, with a p-value of 0.075 between the PD-1 and the IFN groups.

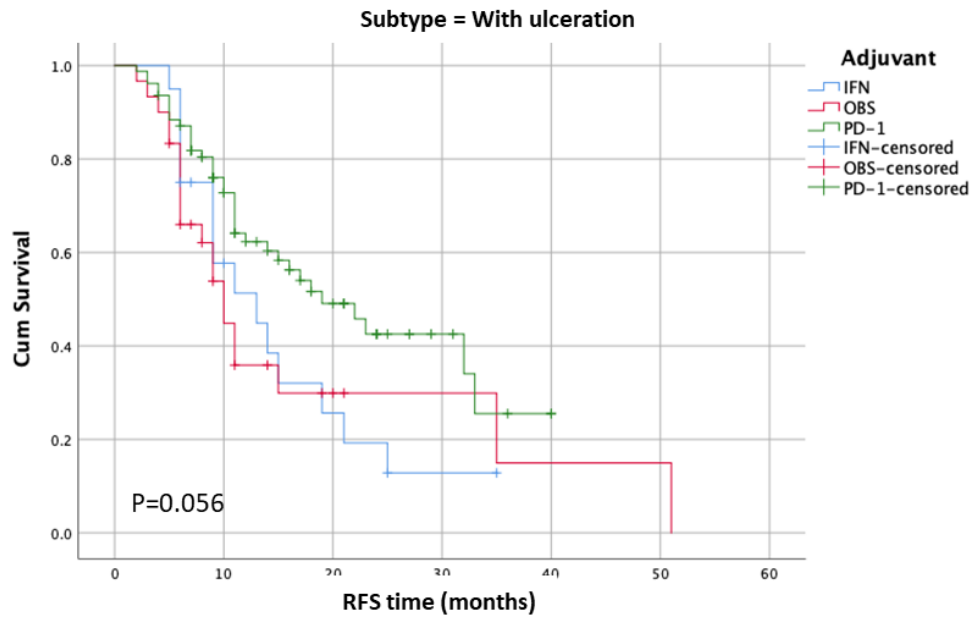


Figure S6. RFS for all enrolled patients with ulceration stratified by adjuvant PD-1 inhibitor treatment versus conventional IFN or observation, with a p-value of 0.056 between the PD-1 and the IFN groups.

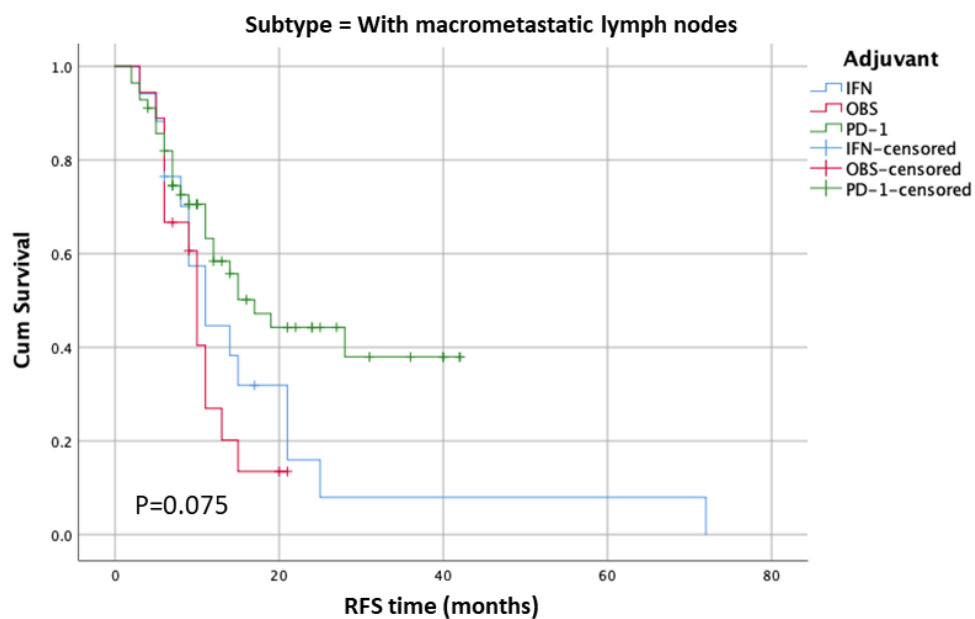


Figure S7. RFS for all melanoma patients with macrometastatic lymph nodes stratified by adjuvant PD-1 inhibitor treatment versus conventional IFN or observation, with a p-value of 0.075 between the PD-1 and the IFN groups.

Table S1. RFS of enrolled patients treated with the adjuvant PD-1 inhibitor versus conventional IFN or observation.

	mFP	mRFS	1-yr RFS	2-yr RFS	P value (vs PD-1)
PD-1	21	23	70.0%	49.4%	0.170 0.036 0.027
IFN	24	15	59.2%	35.1%	
OBS	49	11	45.3%	37.4%	
IFN+OBS	46	13	51.8%	35.1%	

Table S2. DMFS of enrolled patients treated with the adjuvant PD-1 inhibitor versus conventional IFN or observation.

	mFP	mDMFS	1-yr DMFS	2-yr DMFS	P value (vs PD-1)
PD-1	21	NR	84.7%	69.4%	0.106 0.014 0.087
IFN	24	72	85.3%	68.5%	
OBS	49	20	58.6%	48.4%	
IFN+OBS	46	33	70.5%	57.3%	