

## Supplementary Information

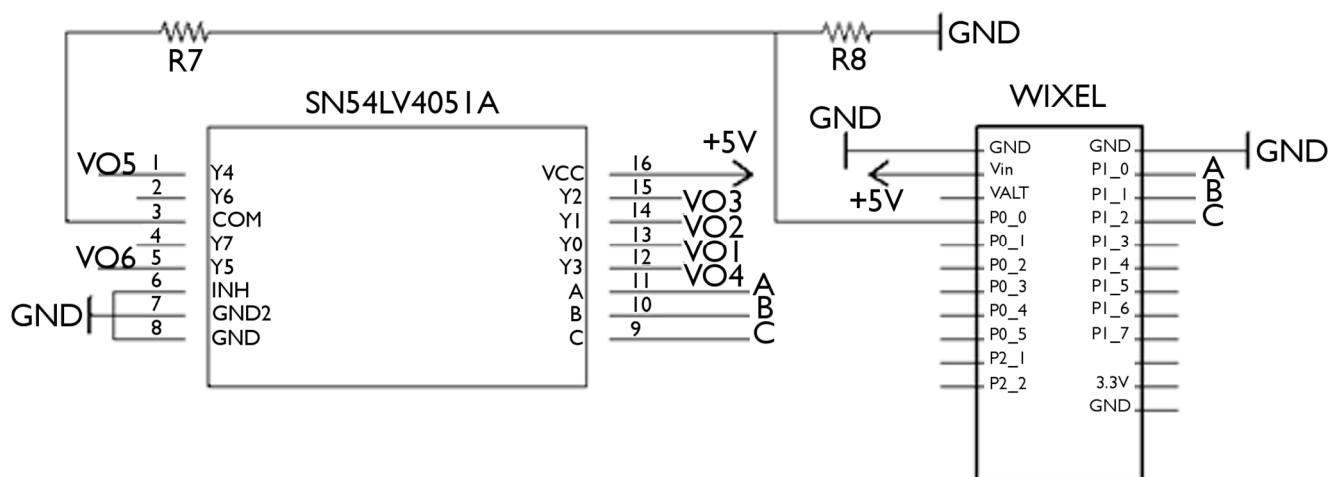
# Real-Time Strap Pressure Sensor System for Powered Exoskeletons. *Sensors* 2015, 15, 4550–4563

Jesús Tamez-Duque <sup>1</sup>, Rebeca Cobian-Ugalde <sup>1</sup>, Atilla Kilicarslan <sup>2</sup>, Anusha Venkatakrishnan <sup>2</sup>, Rogelio Soto <sup>1</sup> and Jose Luis Contreras-Vidal <sup>2,\*</sup>

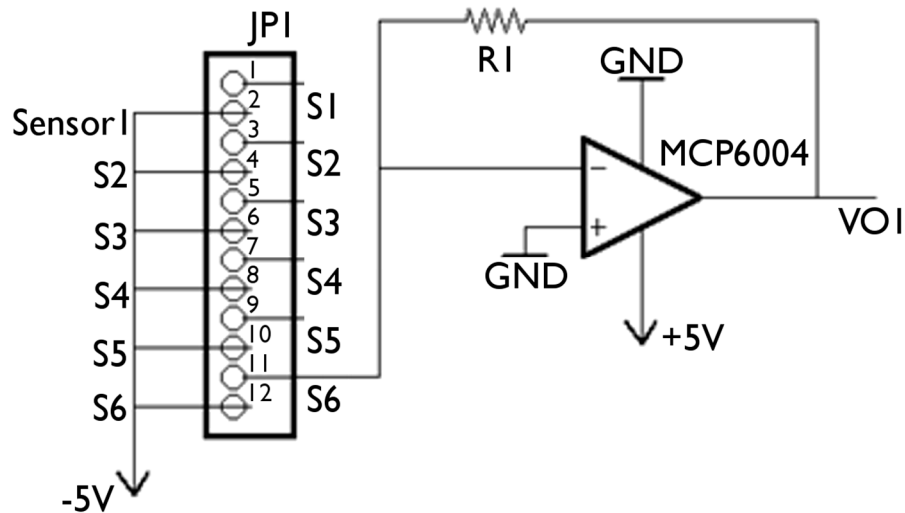
<sup>1</sup> National Robotics Laboratory, School of Engineering and Sciences, Tecnológico de Monterrey, Monterrey N.L. 64849, Mexico; E-Mails: chuy\_611@hotmail.com (J.T.-D.); cobian.rivka@gmail.com (R.C.-U.); rsoto@itesm.mx (R.S.)

<sup>2</sup> Laboratory for Non-Invasive Brain-Machine Interface Systems, Department of Electrical and Computer Engineering, University of Houston, Houston, TX 77004, USA; E-Mails: a.kilicarslan@gmail.com (A.K.); anushavenkat1@gmail.com (A.V.)

\* Author to whom correspondence should be addressed; E-Mails: jlcontreras-vidal@uh.edu; Tel.: +1-713-743-4429.







**Figure S1.** Multiplexor with sensor inputs VO1-VO6. Wixel module is included for wireless transmission of data.



**Figure S2.** Electronic configuration used for each sensor.

Bending effect on pressure measurements.

68.37 mm Hg reference.

	$r = 9.79$ cm	73.05 mm Hg	106.85 %
	$r = 7.99$	78.04	114.14 %
	$r = 6.03$	79.42	116.16 %
	$r = 3.64$	85.29	124.76 %

**Figure S3.** Measurement variations with respect to sensor bending.

**Table S1.** Component details for the developed circuit shown in Figures 6 and 7.

Name on Schematic	Component
S1–S6	Tekscan's FlexiForce® A401-25 Force Sensors
SN54LV4051A	CMOS Analog Multiplexer
WIXEL	Polulu Wixel®
MCP6004	Op-amp
R1–R6	20k Resistor (1% tolerance)
R8	2.2k Resistor (1% tolerance)
R7	1.8k Resistor (5% tolerance)