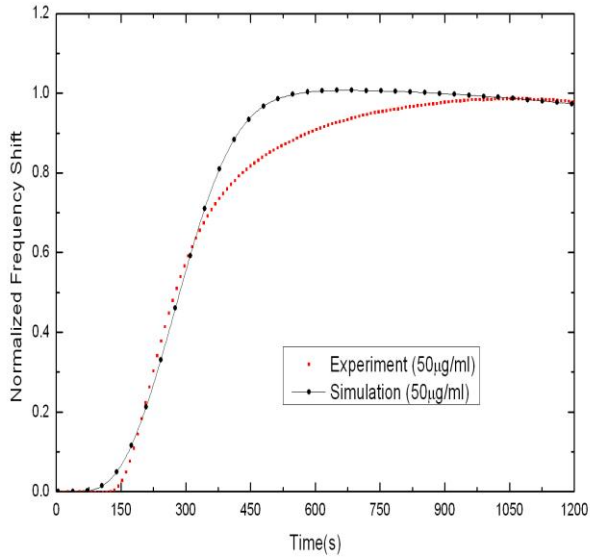
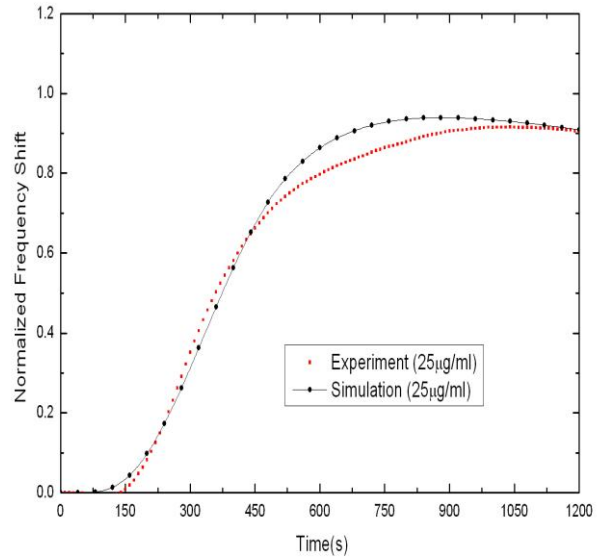


Supplementary Information

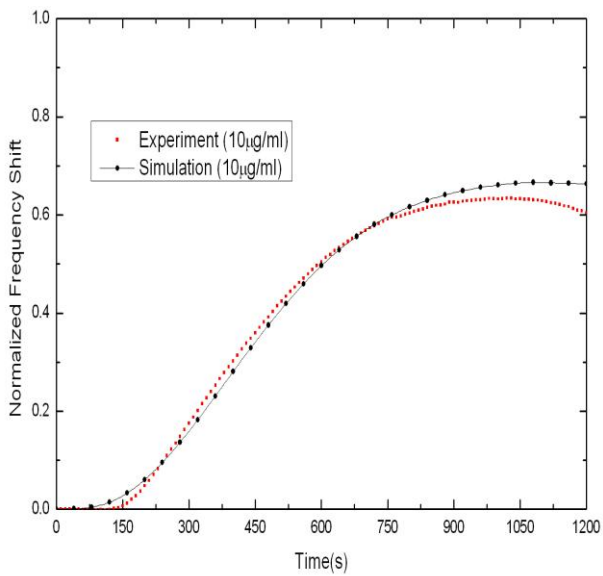
Figure 7. The normalized experimental and simulated binding reaction curves for the 500 μL supplement volume. Here the concentration of the Anti-Human IgG1 solution is **(A)** 50 $\mu\text{g/mL}$, **(B)** 25 $\mu\text{g/mL}$, **(C)** 10 $\mu\text{g/mL}$, and **(D)** 5 $\mu\text{g/mL}$.



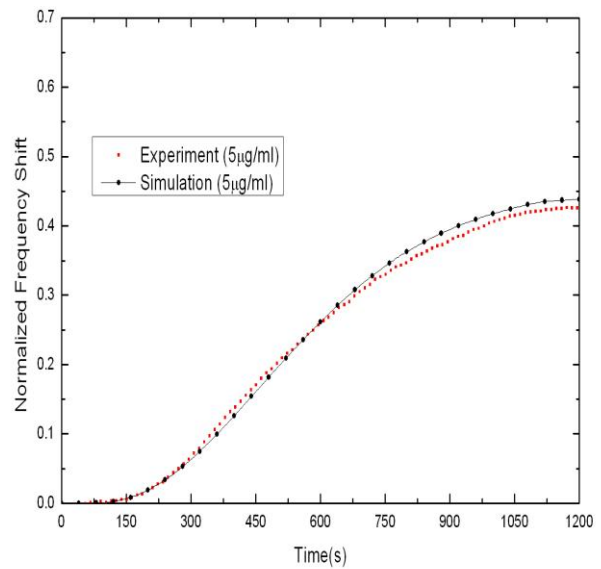
(A)



(B)



(C)



(D)

Figure 8. The normalized experimental and simulated binding reaction curves for the 100 μ L supplement volume. Here the concentration of the Anti-Human IgG1 solution is (A) 50 μ g/mL, (B) 25 μ g/mL, (C) 10 μ g/mL, and (D) 5 μ g/mL.

