

Figure S1. Photomicrographs of CMECs 48 h following treatments with EVs resuspended in EGM-2. Scale bar = 100 μ m. Abbreviations: CMEC, cerebral microvascular endothelial cell; EBM, endothelial basal medium; EGM, endothelial growth medium; EV, extracellular vesicle; MSC, mesenchymal stem cell.

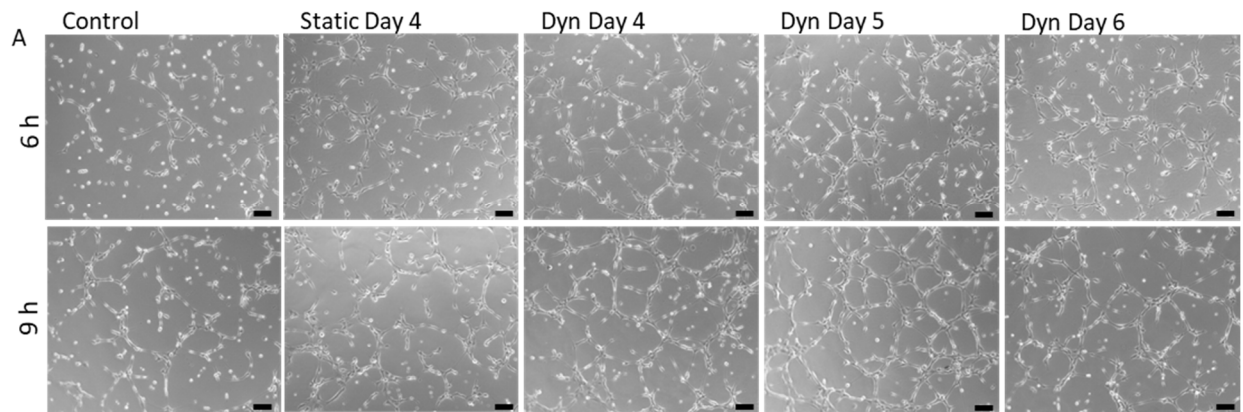


Figure S2. Phase contrast images of CMEC tubes formed after 6 and 9 h on a Geltrex matrix exposed to EBM-2 (control), or EBM-2 with the addition of EVs isolated from static MSC cultures on day 4, or SSB (dyn) MSC culture on day 4, 5, or 6 (scale bar = 100 μ m). Abbreviations: CMEC, cerebral microvascular endothelial cell; EBM, endothelial basal medium; EV, extracellular vesicle; MSC, mesenchymal stem cell.