

**Antimicrobial and Antibiofilm Activities of Carvacrol, Amoxicillin and
Salicylhydroxamic Acid Alone and in Combination *versus Helicobacter pylori*: Towards
a new multi-targeted therapy**

Valentina Puca¹, Gabriele Turacchio², Beatrice Marinacci^{1,3}, Claudiu T. Supuran⁴, Clemente Capasso⁵, Pamela Di Giovanni¹, Ilaria D'Agostino¹, Simone Carradori^{1,†}, Rossella Grande^{1,†,*}

¹Department of Pharmacy, "G. d'Annunzio" University of Chieti-Pescara, 66100 Chieti, Italy; valentina.puca@unich.it (V.P.); beatrice.marinacci@unich.it (B.M.); pamela.digiovanni@unich.it (P.D.G.); ilaria.dagostino1@unich.it (I.D.A.); simone.carradori@unich.it (S.C.); rossella.grande@unich.it (R.G.)

²Institute of Endocrinology and Experimental Oncology "Gaetano Salvatore", National Research Council, 80131 Naples, Italy; gabriele.turacchio@ieos.cnr.it (G.T.)

³Department of Innovative Technologies in Medicine & Dentistry, "G. d'Annunzio" University of Chieti-Pescara, 66100 Chieti, Italy

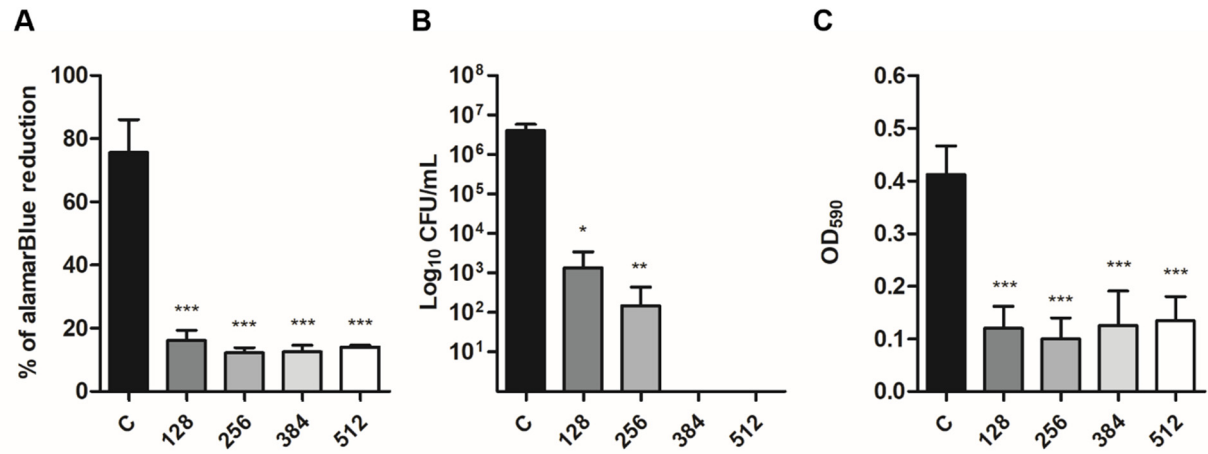
⁴Neurofarba Department, Section of Pharmaceutical and Nutraceutical Sciences, University of Florence, 50019 Sesto Fiorentino, Florence, Italy; claudiu.supuran@unifi.it (C.T.S.)

⁵Department of Biology, Agriculture and Food Sciences, National Research Council (CNR), Institute of Biosciences and Bioresources, 80131 Naples, Italy; clemente.capasso@ibbr.cnr.it (C.C.)

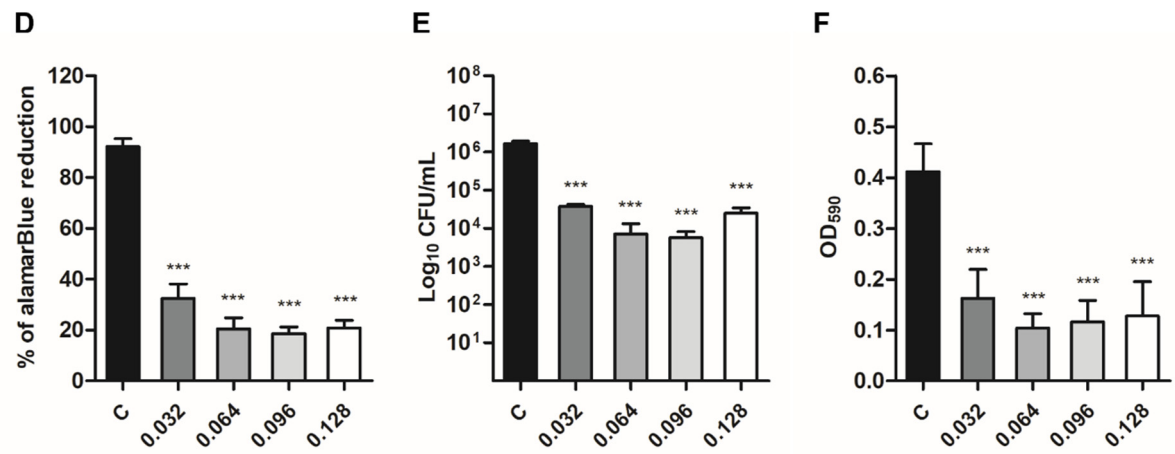
†These authors contributed equally

*Corresponding author

MBEC CAR



MBEC AMX



MBEC CAR-AMX

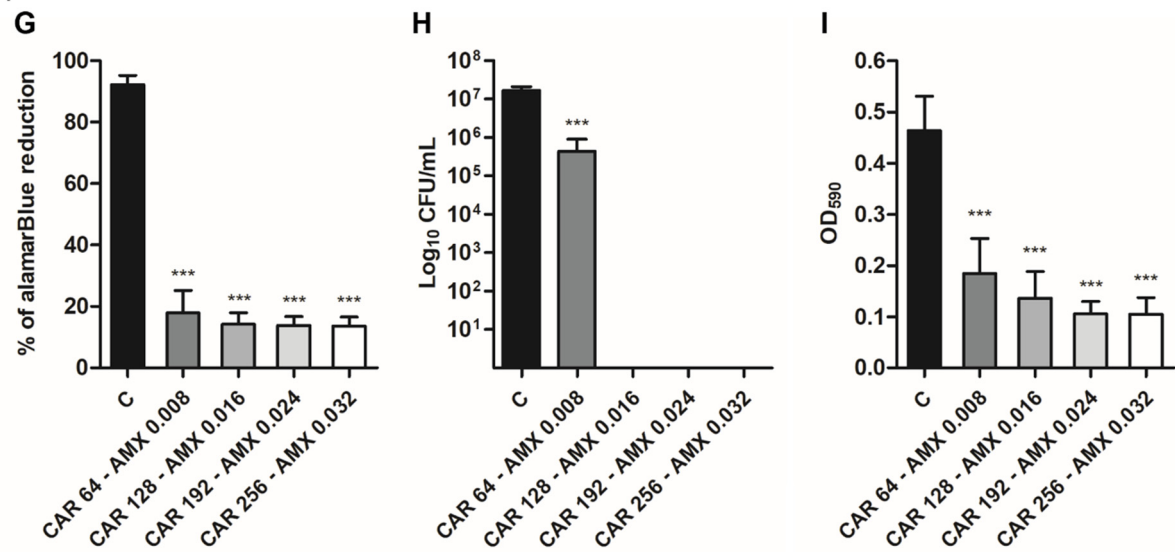


Figure S1. *In vitro* eradicating activity (MBEC) of CAR and AMX alone ($\mu\text{g/mL}$) against *H. pylori* preformed biofilm. C: control biofilm; *H. pylori* biofilm was treated with: CAR and AMX at MIC concentrations (CAR 128 $\mu\text{g/mL}$ and AMX 0.032 $\mu\text{g/mL}$); with CAR and AMX at 2xMIC concentrations (CAR 256 $\mu\text{g/mL}$ and AMX 0.064 $\mu\text{g/mL}$); with CAR and AMX at 3xMIC concentrations (CAR 384 $\mu\text{g/mL}$ and AMX 0.096 $\mu\text{g/mL}$) and with CAR and AMX at 4xMIC concentrations (CAR 512 $\mu\text{g/mL}$ and AMX 0.128 $\mu\text{g/mL}$). (A–C) represent the MBEC of CAR alone; (D–F) represent the MBEC of AMX alone; (G–I) represent the MBEC of CAR and AMX in association *via* alamarBlue assay, the CFU count and the crystal violet assay, respectively. The results represent the mean \pm SD of three independent experiments. * $p < 0.05$ vs C, ** $p < 0.005$ vs C; *** $p < 0.001$ vs C (ANOVA + Dunnett's Multiple comparison test).

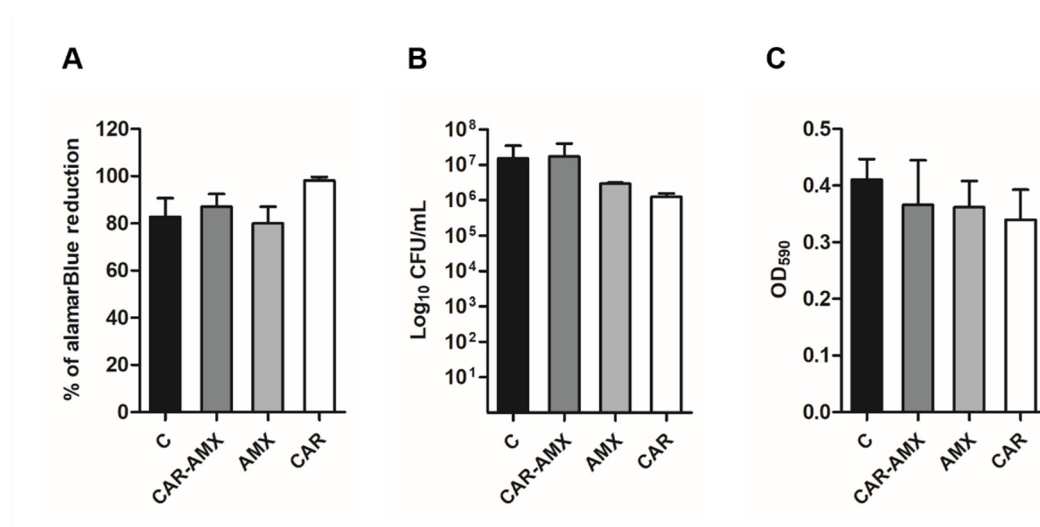


Figure S2. MBIC Determination of CAR and AMX, individually tested and in associations, *versus H. pylori* *via* alamarBlue assay (A), the CFU count (B) and the crystal violet assay (C). C: control biofilm.

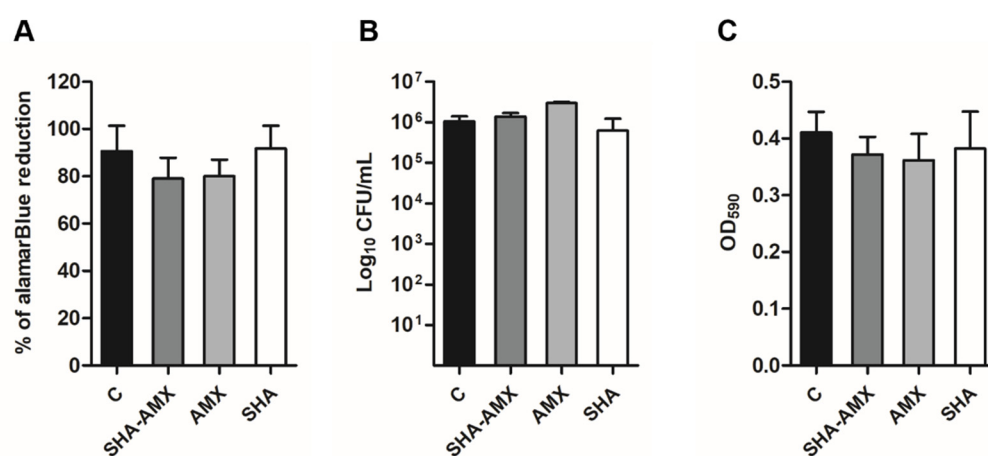


Figure S3. MBIC Determination of SHA and AMX, individually tested and in associations, *versus H. pylori* *via* alamarBlue assay (A), the CFU count (B) and the crystal violet assay (C). C: control biofilm.

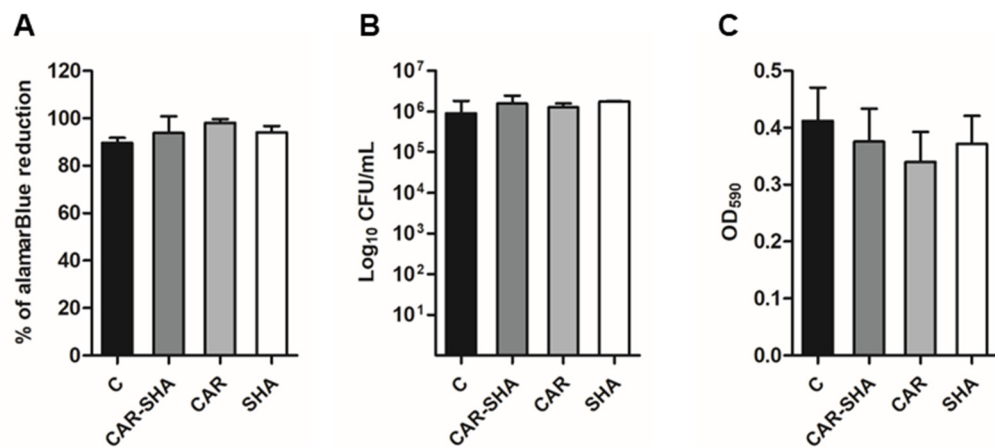


Figure S4. MBIC Determination of CAR and SHA, individually tested and in associations, versus *H. pylori* via alamarBlue assay (A), the CFU count (B) and the crystal violet assay (C). C: control biofilm.