

S1

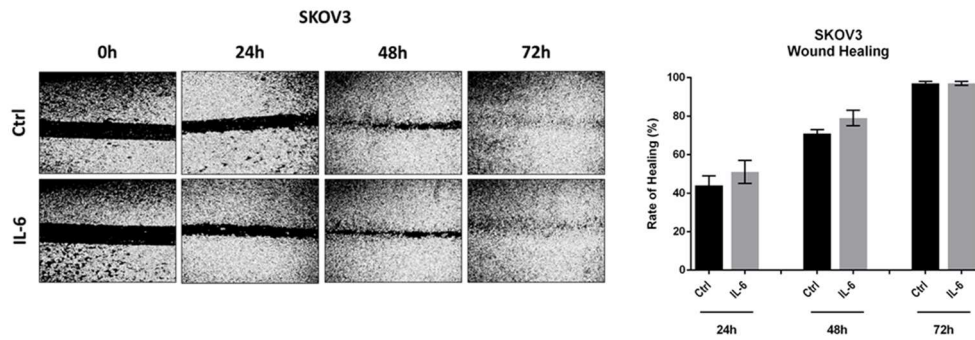


Figure S1. IL-6 fails to stimulate SKOV3 cell migration. SKOV3 cells were exposed or not to 50 ng/ml IL-6. Medium was renewed every 24 hours. The wound closure was monitored up to 72 hours by using a phase-contrast microscope. The rate of healing (%) for each experimental time-point, indicated as the distance between the margins of the wound, was calculated by using ImageJ software. Data represent the average \pm SD calculated for three different fields per each condition.

S2

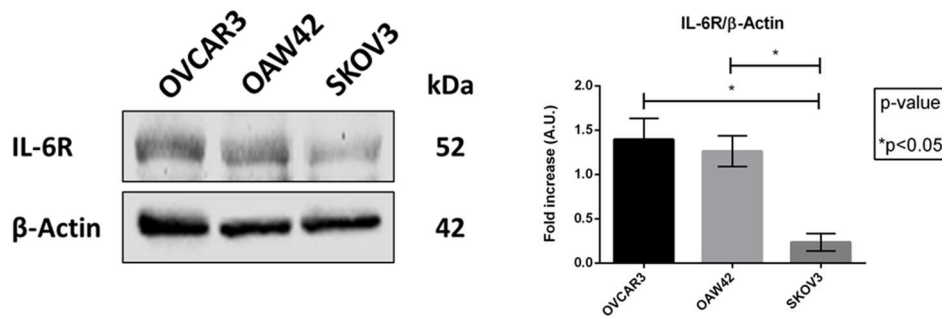


Figure S2. Expression of IL-6R in the three ovarian cancer cell models. OVCAR3, OAW42, and SKOV3 cell homogenates were analyzed by western blotting for the expression of IL-6R. The filter was probed with β -Actin as loading control. The western blotting is representative of three replicates and densitometric data are reported in the graph.