

Supplementary Material

Figure S1. *A. funifera* seed oil organogel nanoparticles (A) and resveratrol-*A. funifera* seed oil organogel (B).

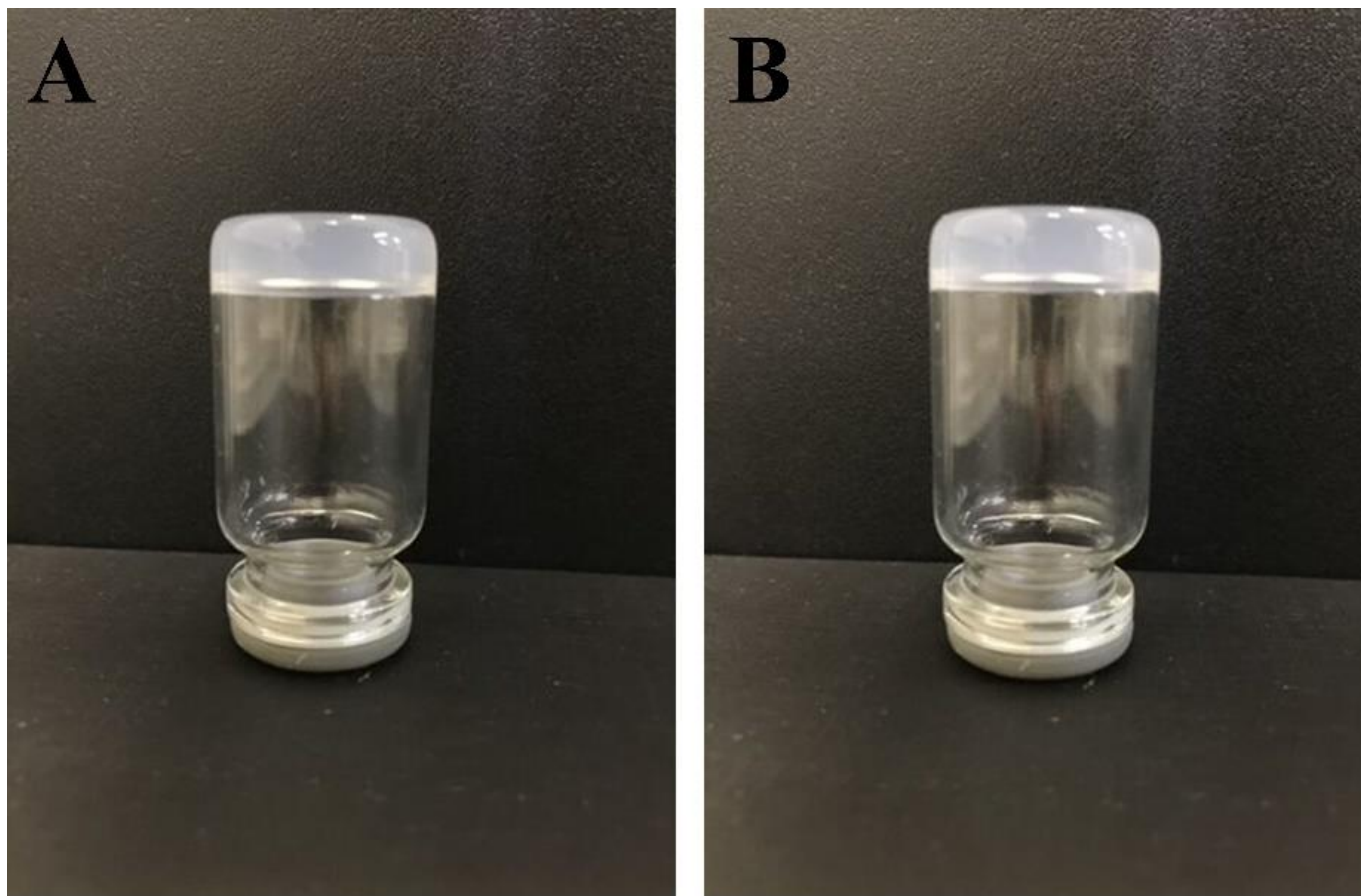


Table S1. Physicochemical characteristics of *Attalea funifera* seed oil.

Parameter	Value*
Acidity index (mgNaOH/g)	0.1770 ± 0.007
Acidity in oleic acid (%)	0.5580 ± 0.060
Peroxide index (mEq/kg)	0.2600 ± 0.037
Refractive index at 20 °C	1.4515 ± < 0.001
Density at 20 °C (g/cm)	0.9202 ± < 0.001

*The values (means ± standard deviation) correspond to averages from three replicates (n = 3).

Figure S2. Scheme of protonation of the resveratrol observed at acid (pH 6) medium (MarvinSketch[®], v. 18.11).

Resveratrol

