

Figure S1. QU pre-treatment effect on the CDDP efficacy . The both types of cells were treated with low and high QU (15 or 100 μ M) doses for 24 h followed by fresh medium for 72 h or /and CDDP (5 μ M for SKOV-3 and 17 μ M for SKOV-3/CDDP) for 72 h. Cell viability was assessed using MTT assay. All data are presented as mean \pm SEM.

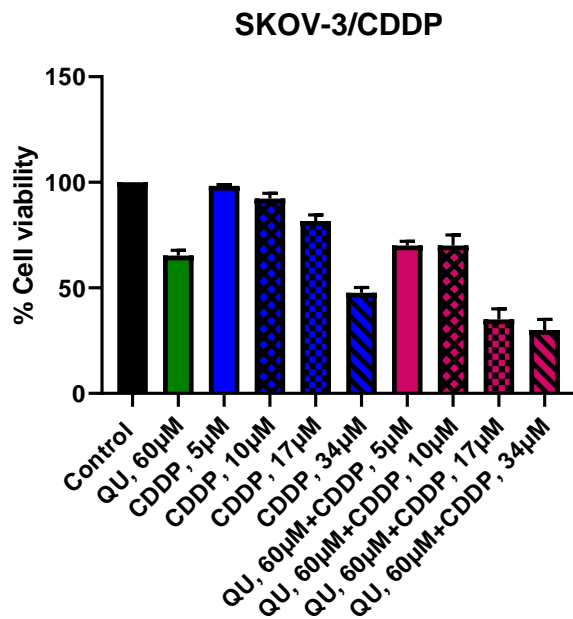


Figure S2. QU pre-treatment effect on the CDDP efficacy. The SKOV-3/CDDP cells were treated with QU (60 μ M) for 48 h followed by fresh medium for 72 h or /and CDDP (5,10,17 and 34 μ M) for 72 h. Cell viability was assessed using MTT assay.

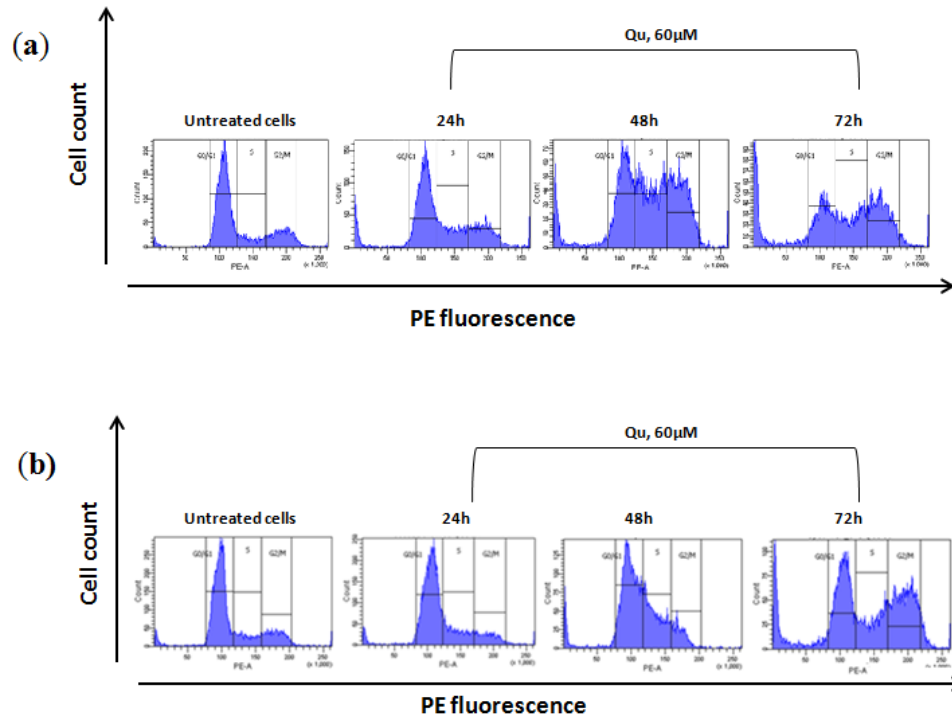


Figure S3. Representative cell cycle flow cytometry dot-plots of ovarian cancer (a) SKOV-3 and (b) SKOV-3/CDDP cells treated with (60 μ M) QU for 24, 48 and 72 h.

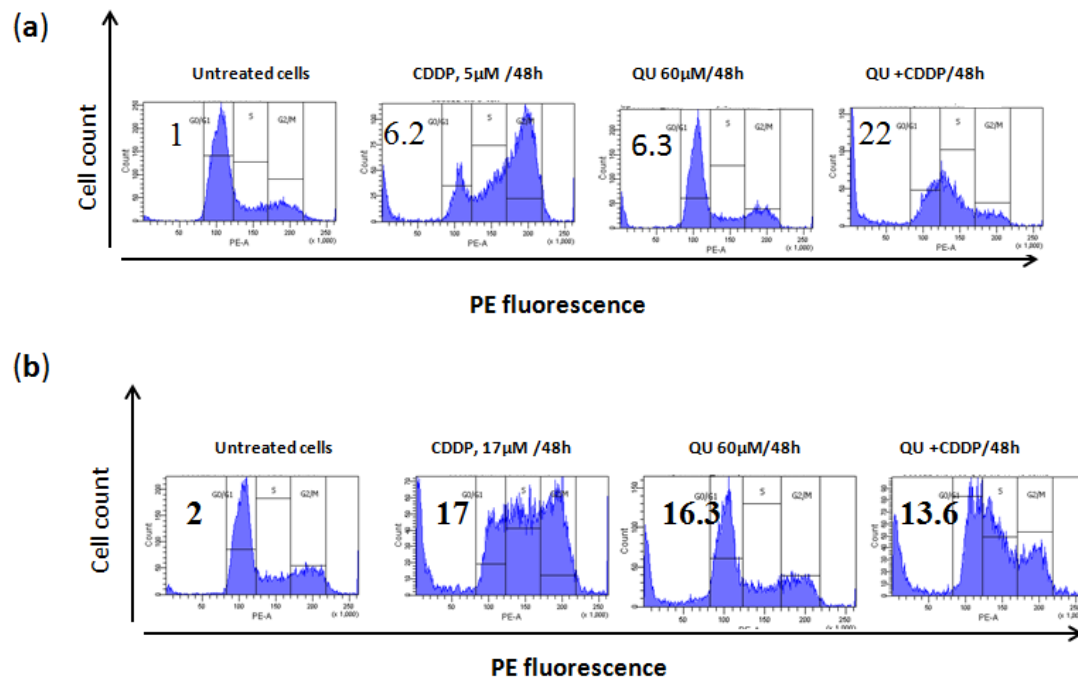


Figure S4. Representative cell cycle flow cytometry dot-plots of ovarian cancer (a) SKOV-3 and (b) SKOV-3/CDDP cells treated with (60 μ M) QU or CDDP only and a combination QU and CDDP treatment for 48h.