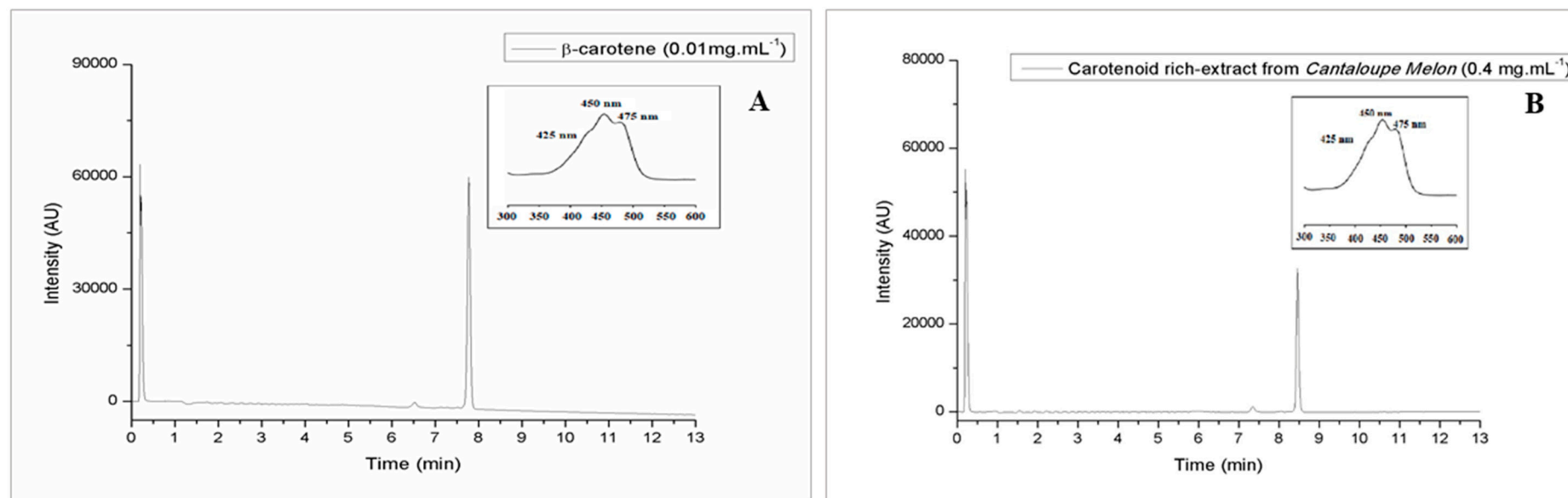


## Supplementary Materials



**Figure S1.** Chromatograms obtained by UPLC. **A.** standard  $\beta$ -carotene (Sigma®); **B.**  $\beta$ -carotene in crude extract rich in carotenoids from Cantaloupe melon pulp. The linear equation obtained from the calibration curve performed with the standard  $\beta$ -carotene was  $y = 10,000,000x - 77163$  ( $R^2 = 0.998$ ) [13].