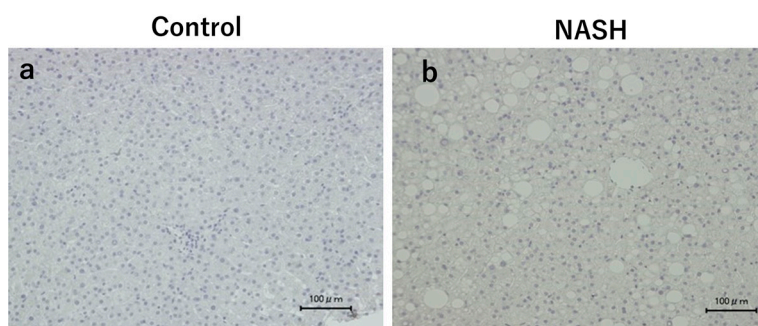
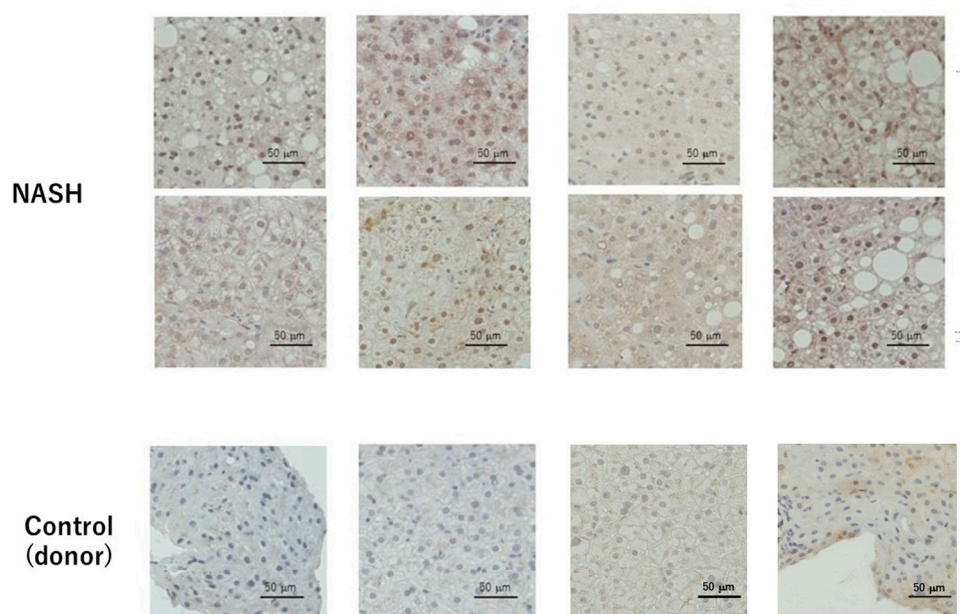


Supplementary figure S1



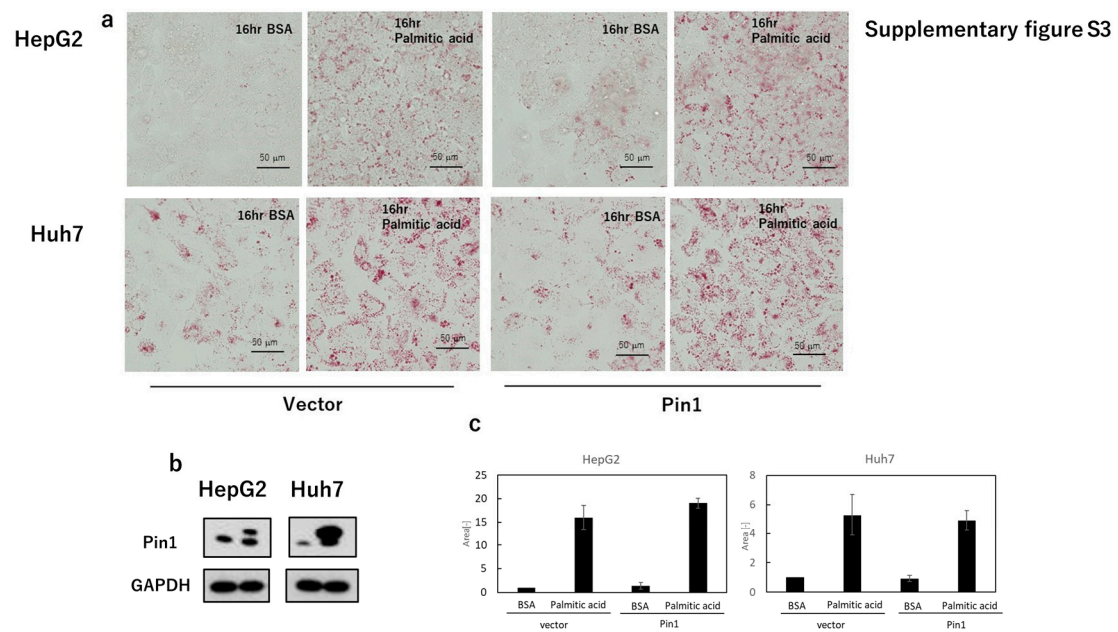
SupFig.S1 Mouse IgG antibody was used as a control. Each panel corresponds to those in Fig.1. Images show the effects of intrinsic biotin to have been excluded.

Supplementary figure S2



Supplementally figure S2

Pin1 expressions in liver biopsy samples from NASH patients and donors. Pin1 was expressed strongly in the nucleus and cytosol of NASH samples. Donor samples showed weak expression only in the cytosol.



Sup Fig.S3 Effects of free fatty acid stimulation on lipid accumulation in cells overexpressing Pin1
Cells were treated with 50 μ M palmitic acid and 25 μ M oleic acid for 16 hrs. Then, lipid accumulation was examined by oil-red O staining (A) and the stained area was calculated as overexpression of Pin1 and vector