

## Supplemental data

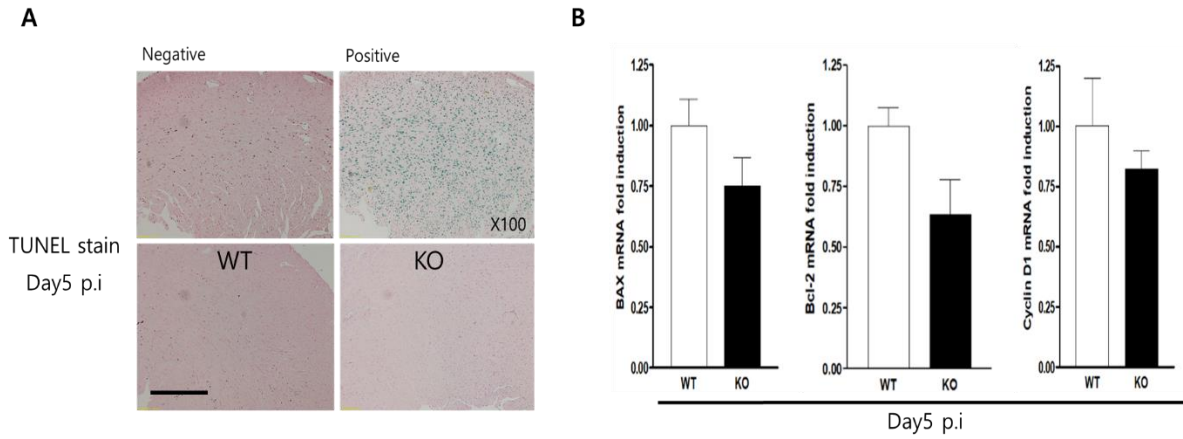


Figure S1. Effect of CAR deletion on CVB3-induced myocarditis. (A) TUNEL stain of sectioned heart show apoptosis positive myocardium using green nuclear stain. (B) Apoptotic (BAX) and anti-apoptotic (Bcl-2) gene mRNA level was performed by real-time PCR. All data are the mean  $\pm$  s.e.m. from experiments performed (scale bar, 200  $\mu$ m). NS>0.05 and \*\*\* $P$ <0.001 by two-tailed Student's  $t$ -test.