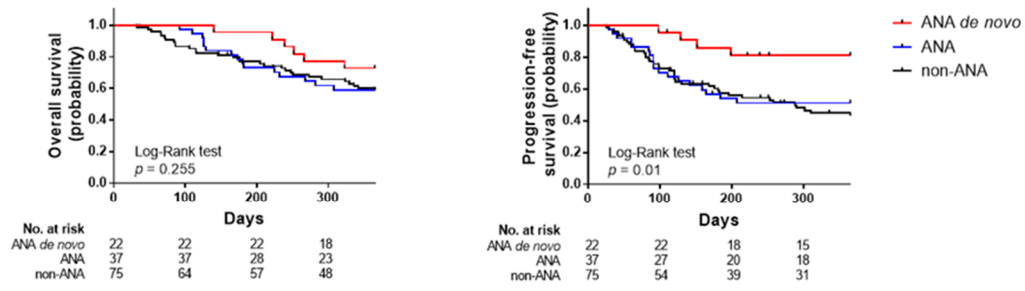


Figure S1. Comparison of irAE manifestation in patients grouped according to the presence of ANA. Association of ANA presence with (A) irAE development, (B) number of irAEs developed by each patient, (C) time of onset of the first and (D) most severe irAE developed, and (E) type of irAE. Chi-square test was used for statistical analysis of frequencies. Mann-Whitney test was used for comparing times of irAE onset.

A. All subjects



B. NSCLC population

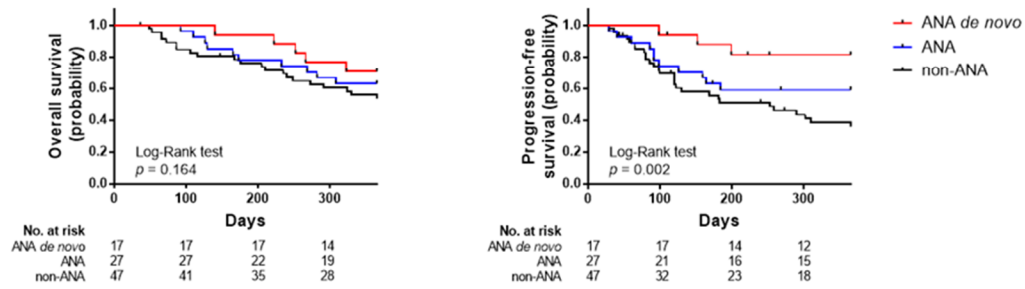


Figure S2: Comparison of treatment response in patients grouped according to the presence of ANA. Overall survival and progression-free survival analysis in (A) all patients included in the study and (B) NSCLC patients. Log-rang Mantel-Cox test was used for analysis of patients groups during 365 days of follow-up.